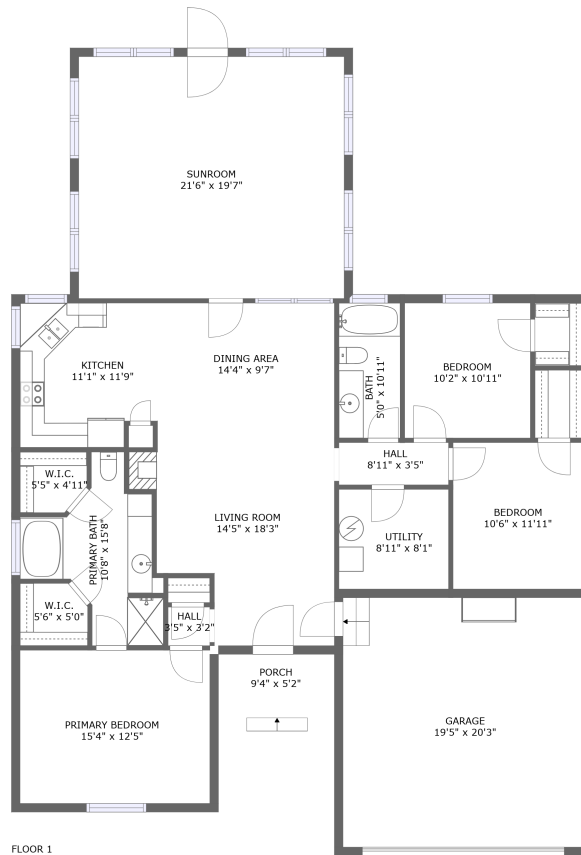




15567 Reid Road, Athens, Limestone County, Alabama, United States, 35611



Property summary

 **1** Garages

 **3** Bedrooms

 **2** Bathrooms

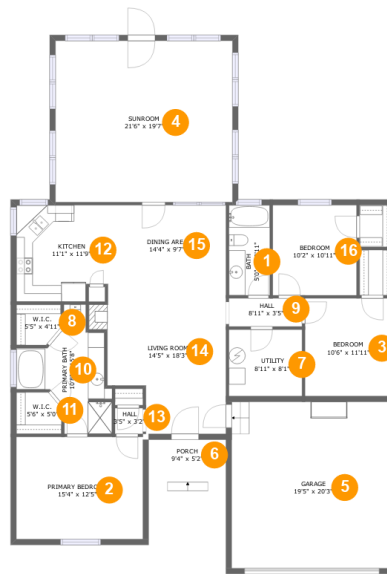
 **0** Half baths

 **1** Floors

 **1,952**
Gross living
area sqft

 **2,433**
Total sqft

15567 Reid Road, Athens, Limestone County, Alabama, United States, 35611



Room dimensions

Floor 1

Total sqft: 2433 Living area: 1952

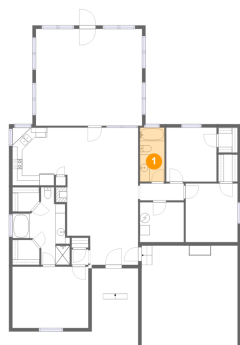
#		Dimensions	sqft	Counted as living area
1	Bath	5'0" x 10'11"	54 sq. ft	Yes
2	Bedroom	15'4" x 12'5"	191 sq. ft	Yes
3	Bedroom	10'6" x 11'11"	125 sq. ft	Yes
4	Room	21'6" x 19'7"	422 sq. ft	Yes
5	Garage	19'5" x 20'3"	394 sq. ft	No
6	Outdoor	9'4" x 5'2"	48 sq. ft	No
7	Utility	8'11" x 8'1"	72 sq. ft	Yes
8	Cl	5'5" x 4'11"	25 sq. ft	Yes
9	Hall	8'11" x 3'5"	30 sq. ft	Yes
10	Bath	10'8" x 15'8"	107 sq. ft	Yes
11	Cl	5'6" x 5'0"	26 sq. ft	Yes

**15567 Reid Road, Athens, Limestone County,
Alabama, United States, 35611**

#		Dimensions	sqft	Counted as living area
12	Kitchen	11'1" x 11'9"	125 sq. ft	Yes
13	Hall	3'5" x 3'2"	11 sq. ft	Yes
14	Living Room	14'5" x 18'3"	242 sq. ft	Yes
15	Dining Room	14'4" x 9'7"	137 sq. ft	Yes
16	Bedroom	10'2" x 10'11"	112 sq. ft	Yes

15567 Reid Road, Athens, Limestone County, Alabama, United States, 35611

1 Floor 1 - Bath



Dimensions: 5'0" x 10'11"
Area: 54 sq. ft
Counted as living area: Yes

Heated: Yes
Finished: Yes
Enclosed: Yes
Contiguous: Yes
Permitted: Yes
Wet space: Yes
Addition: No
Conversion: No

2 Floor 1 - Bedroom

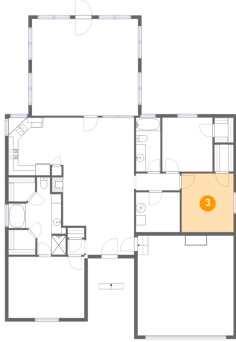


Dimensions: 15'4" x 12'5"
Area: 191 sq. ft
Counted as living area: Yes

Heated: Yes
Finished: Yes
Enclosed: Yes
Contiguous: Yes
Permitted: Yes
Wet space: No
Addition: No
Conversion: No

**15567 Reid Road, Athens, Limestone County,
Alabama, United States, 35611**

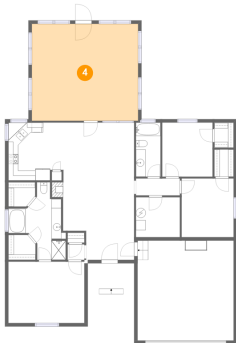
3 Floor 1 - Bedroom



Dimensions: 10'6" x 11'11"
Area: 125 sq. ft
Counted as living area: Yes

Heated: Yes
Finished: Yes
Enclosed: Yes
Contiguous: Yes
Permitted: Yes
Wet space: No
Addition: No
Conversion: No

4 Floor 1 - Room



Dimensions: 21'6" x 19'7"
Area: 422 sq. ft
Counted as living area: Yes

Heated: Yes
Finished: Yes
Enclosed: Yes
Contiguous: Yes
Permitted: Yes
Wet space: No
Addition: No
Conversion: No

5 Floor 1 - Garage

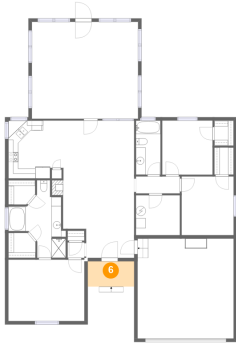


Dimensions: 19'5" x 20'3"
Area: 394 sq. ft
Counted as living area: No

Heated: No
Finished: No
Enclosed: Yes
Contiguous: Yes
Permitted: Yes
Wet space: No
Addition: No
Conversion: No

**15567 Reid Road, Athens, Limestone County,
Alabama, United States, 35611**

6 Floor 1 - Outdoor



Dimensions: 9'4" x 5'2"
Area: 48 sq. ft
Counted as living area: No

Heated: No
Finished: Yes
Enclosed: No
Contiguous: Yes
Permitted: Yes
Wet space: No
Addition: No
Conversion: No

7 Floor 1 - Utility



Dimensions: 8'11" x 8'1"
Area: 72 sq. ft
Counted as living area: Yes

Heated: Yes
Finished: Yes
Enclosed: Yes
Contiguous: Yes
Permitted: Yes
Wet space: No
Addition: No
Conversion: No

8 Floor 1 - Cl

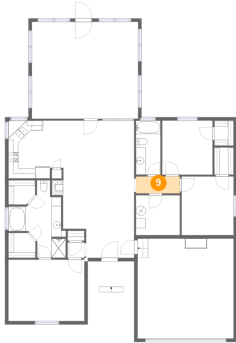


Dimensions: 5'5" x 4'11"
Area: 25 sq. ft
Counted as living area: Yes

Heated: Yes
Finished: Yes
Enclosed: Yes
Contiguous: Yes
Permitted: Yes
Wet space: No
Addition: No
Conversion: No

**15567 Reid Road, Athens, Limestone County,
Alabama, United States, 35611**

9 Floor 1 - Hall



Dimensions: 8'11" x 3'5"
Area: 30 sq. ft
Counted as living area: Yes

Heated: Yes
Finished: Yes
Enclosed: Yes
Contiguous: Yes
Permitted: Yes
Wet space: No
Addition: No
Conversion: No

10 Floor 1 - Bath



Dimensions: 10'8" x 15'8"
Area: 107 sq. ft
Counted as living area: Yes

Heated: Yes
Finished: Yes
Enclosed: Yes
Contiguous: Yes
Permitted: Yes
Wet space: Yes
Addition: No
Conversion: No

11 Floor 1 - Cl

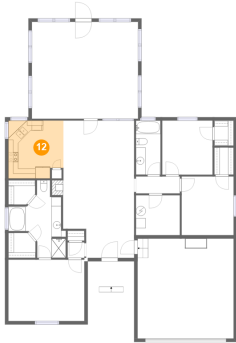


Dimensions: 5'6" x 5'0"
Area: 26 sq. ft
Counted as living area: Yes

Heated: Yes
Finished: Yes
Enclosed: Yes
Contiguous: Yes
Permitted: Yes
Wet space: No
Addition: No
Conversion: No

15567 Reid Road, Athens, Limestone County,
Alabama, United States, 35611

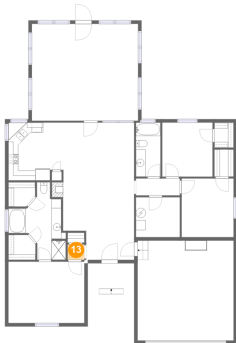
12 Floor 1 - Kitchen



Dimensions: 11'1" x 11'9"
Area: 125 sq. ft
Counted as living area: Yes

Heated: Yes
Finished: Yes
Enclosed: Yes
Contiguous: Yes
Permitted: Yes
Wet space: No
Addition: No
Conversion: No

13 Floor 1 - Hall



Dimensions: 3'5" x 3'2"
Area: 11 sq. ft
Counted as living area: Yes

Heated: Yes
Finished: Yes
Enclosed: Yes
Contiguous: Yes
Permitted: Yes
Wet space: No
Addition: No
Conversion: No

14 Floor 1 - Living Room

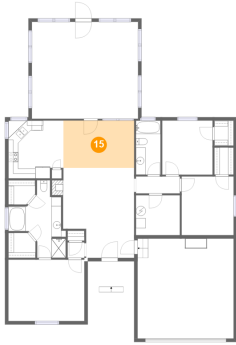


Dimensions: 14'5" x 18'3"
Area: 242 sq. ft
Counted as living area: Yes

Heated: Yes
Finished: Yes
Enclosed: Yes
Contiguous: Yes
Permitted: Yes
Wet space: No
Addition: No
Conversion: No

**15567 Reid Road, Athens, Limestone County,
Alabama, United States, 35611**

15 Floor 1 - Dining Room



Dimensions: 14'4" x 9'7"
Area: 137 sq. ft
Counted as living area: Yes

Heated: Yes
Finished: Yes
Enclosed: Yes
Contiguous: Yes
Permitted: Yes
Wet space: No
Addition: No
Conversion: No

16 Floor 1 - Bedroom



Dimensions: 10'2" x 10'11"
Area: 112 sq. ft
Counted as living area: Yes

Heated: Yes
Finished: Yes
Enclosed: Yes
Contiguous: Yes
Permitted: Yes
Wet space: No
Addition: No
Conversion: No