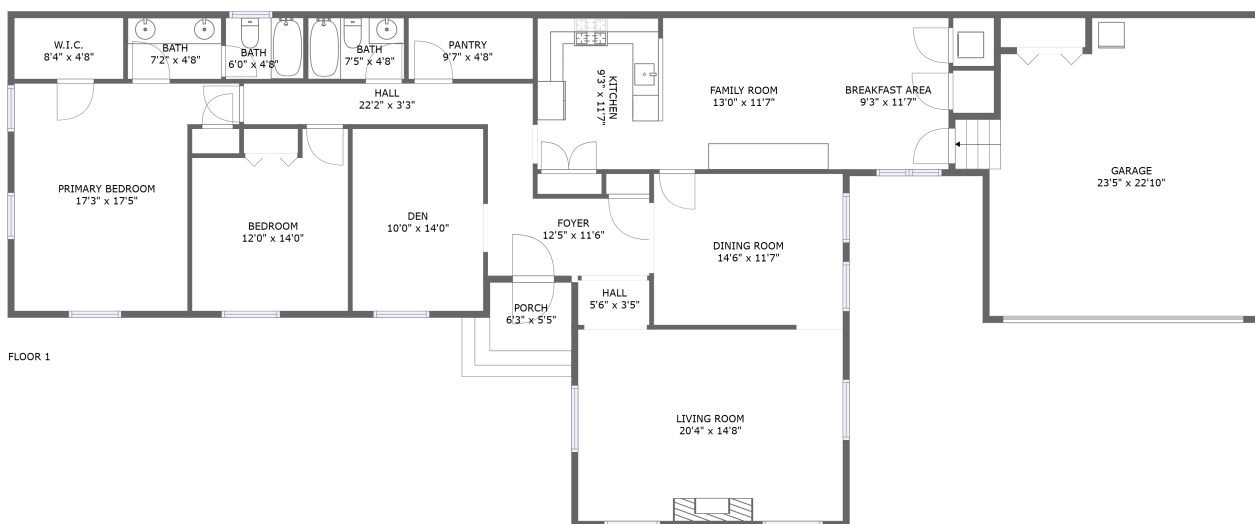



315 Barkley Court, Bedford Hills, Lynchburg, Lynchburg city, Virginia, United States, 24503



Property summary

 **1** Garages

 **2** Bedrooms

 **2** Bathrooms

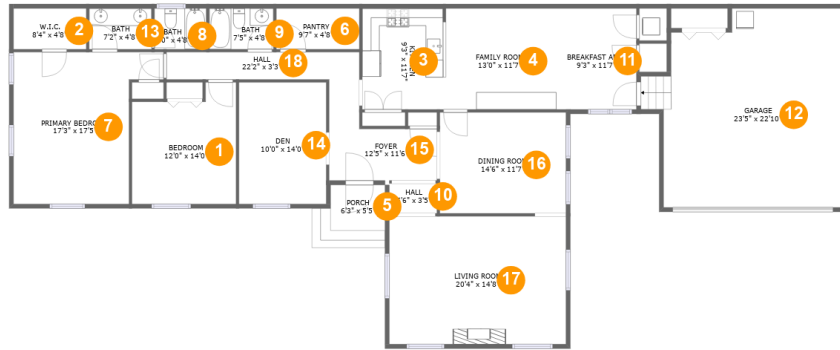
 **0** Half baths

 **1** Floors

 **1,972** Gross living area sqft

 **2,525** Total sqft

315 Barkley Court, Bedford Hills, Lynchburg, Lynchburg city, Virginia, United States, 24503



Room dimensions

Floor 1

Total sqft: 2525 Living area: 1972

#		Dimensions	sqft	Counted as living area
1	Bedroom	12'0" x 14'0"	148 sq. ft	Yes
2	W.I.C.	8'4" x 4'8"	39 sq. ft	Yes
3	Kitchen	9'3" x 11'7"	108 sq. ft	Yes
4	Family Room	13'0" x 11'7"	151 sq. ft	Yes
5	Porch	6'3" x 5'5"	33 sq. ft	No
6	Pantry	9'7" x 4'8"	45 sq. ft	Yes
7	Primary Bedroom	17'3" x 17'5"	244 sq. ft	Yes
8	Bath	6'0" x 4'8"	28 sq. ft	Yes
9	Bath	7'5" x 4'8"	35 sq. ft	Yes
10	Hall	5'6" x 3'5"	19 sq. ft	Yes
11	Breakfast Area	9'3" x 11'7"	107 sq. ft	Yes

**315 Barkley Court, Bedford Hills, Lynchburg,
Lynchburg city, Virginia, United States, 24503**

#		Dimensions	sqft	Counted as living area
12	Garage	23'5" x 22'10"	460 sq. ft	No
13	Bath	7'2" x 4'8"	34 sq. ft	Yes
14	Den	10'0" x 14'0"	140 sq. ft	Yes
15	Foyer	12'5" x 11'6"	93 sq. ft	Yes
16	Dining Room	14'6" x 11'7"	168 sq. ft	Yes
17	Living Room	20'4" x 14'8"	298 sq. ft	Yes
18	Hall	22'2" x 3'3"	70 sq. ft	Yes

315 Barkley Court, Bedford Hills, Lynchburg, Lynchburg city, Virginia, United States, 24503

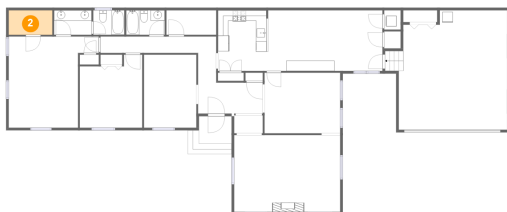
1 Floor 1 - Bedroom



Dimensions: 12'0" x 14'0"
Area: 148 sq. ft
Counted as living area: Yes

Heated: Yes
Finished: Yes
Enclosed: Yes
Contiguous: Yes
Permitted: Yes
Wet space: No
Addition: No
Conversion: No

2 Floor 1 - W.I.C.

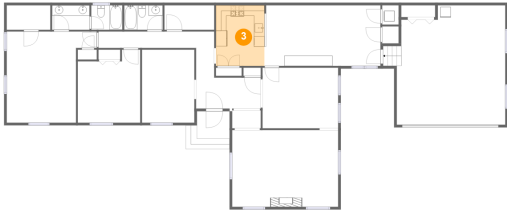


Dimensions: 8'4" x 4'8"
Area: 39 sq. ft
Counted as living area: Yes

Heated: Yes
Finished: Yes
Enclosed: Yes
Contiguous: Yes
Permitted: Yes
Wet space: No
Addition: No
Conversion: No

315 Barkley Court, Bedford Hills, Lynchburg, Lynchburg city, Virginia, United States, 24503

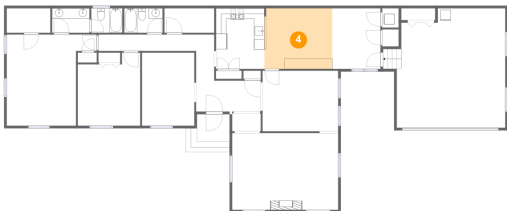
3 Floor 1 - Kitchen



Dimensions: 9'3" x 11'7"
Area: 108 sq. ft
Counted as living area: Yes

Heated: Yes
Finished: Yes
Enclosed: Yes
Contiguous: Yes
Permitted: Yes
Wet space: No
Addition: No
Conversion: No

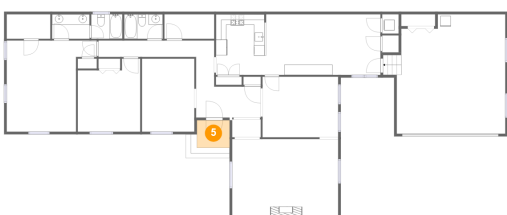
4 Floor 1 - Family Room



Dimensions: 13'0" x 11'7"
Area: 151 sq. ft
Counted as living area: Yes

Heated: Yes
Finished: Yes
Enclosed: Yes
Contiguous: Yes
Permitted: Yes
Wet space: No
Addition: No
Conversion: No

5 Floor 1 - Porch

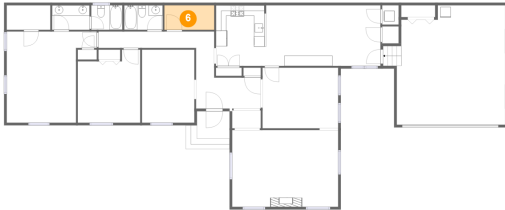


Dimensions: 6'3" x 5'5"
Area: 33 sq. ft
Counted as living area: No

Heated: No
Finished: Yes
Enclosed: No
Contiguous: Yes
Permitted: Yes
Wet space: No
Addition: No
Conversion: No

315 Barkley Court, Bedford Hills, Lynchburg, Lynchburg city, Virginia, United States, 24503

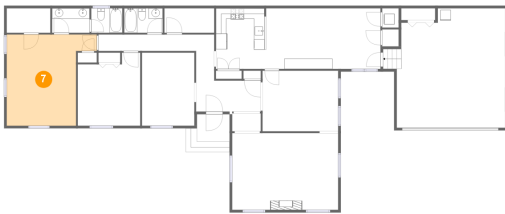
6 Floor 1 - Pantry



Dimensions: 9'7" x 4'8"
Area: 45 sq. ft
Counted as living area: Yes

Heated: Yes
Finished: Yes
Enclosed: Yes
Contiguous: Yes
Permitted: Yes
Wet space: No
Addition: No
Conversion: No

7 Floor 1 - Primary Bedroom



Dimensions: 17'3" x 17'5"
Area: 244 sq. ft
Counted as living area: Yes

Heated: Yes
Finished: Yes
Enclosed: Yes
Contiguous: Yes
Permitted: Yes
Wet space: No
Addition: No
Conversion: No

8 Floor 1 - Bath

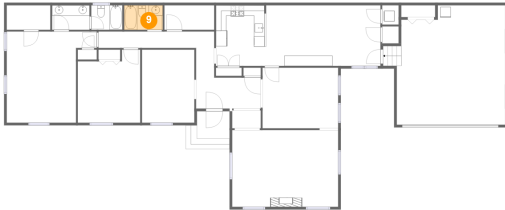


Dimensions: 6'0" x 4'8"
Area: 28 sq. ft
Counted as living area: Yes

Heated: Yes
Finished: Yes
Enclosed: Yes
Contiguous: Yes
Permitted: Yes
Wet space: Yes
Addition: No
Conversion: No

**315 Barkley Court, Bedford Hills, Lynchburg,
Lynchburg city, Virginia, United States, 24503**

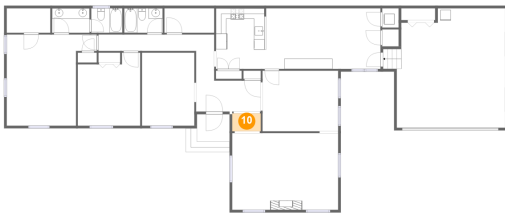
9 Floor 1 - Bath



Dimensions: 7'5" x 4'8"
Area: 35 sq. ft
Counted as living area: Yes

Heated: Yes
Finished: Yes
Enclosed: Yes
Contiguous: Yes
Permitted: Yes
Wet space: Yes
Addition: No
Conversion: No

10 Floor 1 - Hall



Dimensions: 5'6" x 3'5"
Area: 19 sq. ft
Counted as living area: Yes

Heated: Yes
Finished: Yes
Enclosed: Yes
Contiguous: Yes
Permitted: Yes
Wet space: No
Addition: No
Conversion: No

11 Floor 1 - Breakfast Area

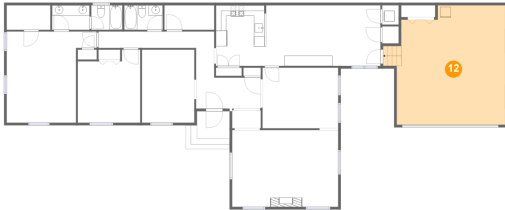


Dimensions: 9'3" x 11'7"
Area: 107 sq. ft
Counted as living area: Yes

Heated: Yes
Finished: Yes
Enclosed: Yes
Contiguous: Yes
Permitted: Yes
Wet space: No
Addition: No
Conversion: No

315 Barkley Court, Bedford Hills, Lynchburg, Lynchburg city, Virginia, United States, 24503

12 Floor 1 - Garage



Dimensions: 23'5" x 22'10"
Area: 460 sq. ft
Counted as living area: No

Heated: No
Finished: No
Enclosed: Yes
Contiguous: Yes
Permitted: Yes
Wet space: No
Addition: No
Conversion: No

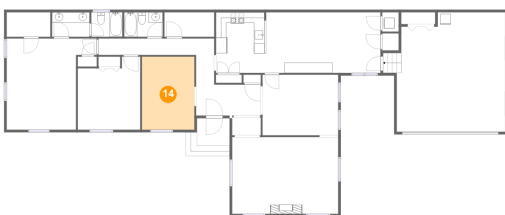
13 Floor 1 - Bath



Dimensions: 7'2" x 4'8"
Area: 34 sq. ft
Counted as living area: Yes

Heated: Yes
Finished: Yes
Enclosed: Yes
Contiguous: Yes
Permitted: Yes
Wet space: Yes
Addition: No
Conversion: No

14 Floor 1 - Den



Dimensions: 10'0" x 14'0"
Area: 140 sq. ft
Counted as living area: Yes

Heated: Yes
Finished: Yes
Enclosed: Yes
Contiguous: Yes
Permitted: Yes
Wet space: No
Addition: No
Conversion: No

**315 Barkley Court, Bedford Hills, Lynchburg,
Lynchburg city, Virginia, United States, 24503**

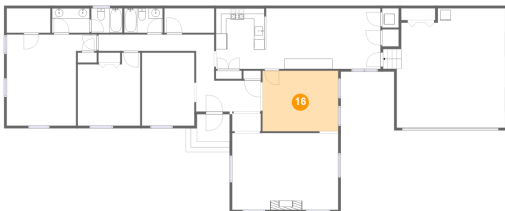
15 Floor 1 - Foyer



Dimensions: 12'5" x 11'6"
Area: 93 sq. ft
Counted as living area: Yes

Heated: Yes
Finished: Yes
Enclosed: Yes
Contiguous: Yes
Permitted: Yes
Wet space: No
Addition: No
Conversion: No

16 Floor 1 - Dining Room



Dimensions: 14'6" x 11'7"
Area: 168 sq. ft
Counted as living area: Yes

Heated: Yes
Finished: Yes
Enclosed: Yes
Contiguous: Yes
Permitted: Yes
Wet space: No
Addition: No
Conversion: No

17 Floor 1 - Living Room

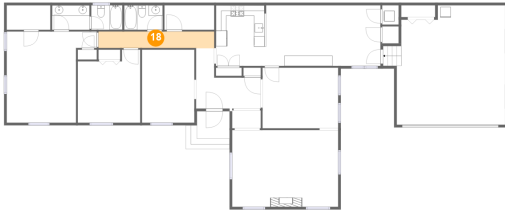


Dimensions: 20'4" x 14'8"
Area: 298 sq. ft
Counted as living area: Yes

Heated: Yes
Finished: Yes
Enclosed: Yes
Contiguous: Yes
Permitted: Yes
Wet space: No
Addition: No
Conversion: No

**315 Barkley Court, Bedford Hills, Lynchburg,
Lynchburg city, Virginia, United States, 24503**

18 Floor 1 - Hall



Dimensions: 22'2" x 3'3"
Area: 70 sq. ft
Counted as living area: Yes

Heated: Yes
Finished: Yes
Enclosed: Yes
Contiguous: Yes
Permitted: Yes
Wet space: No
Addition: No
Conversion: No