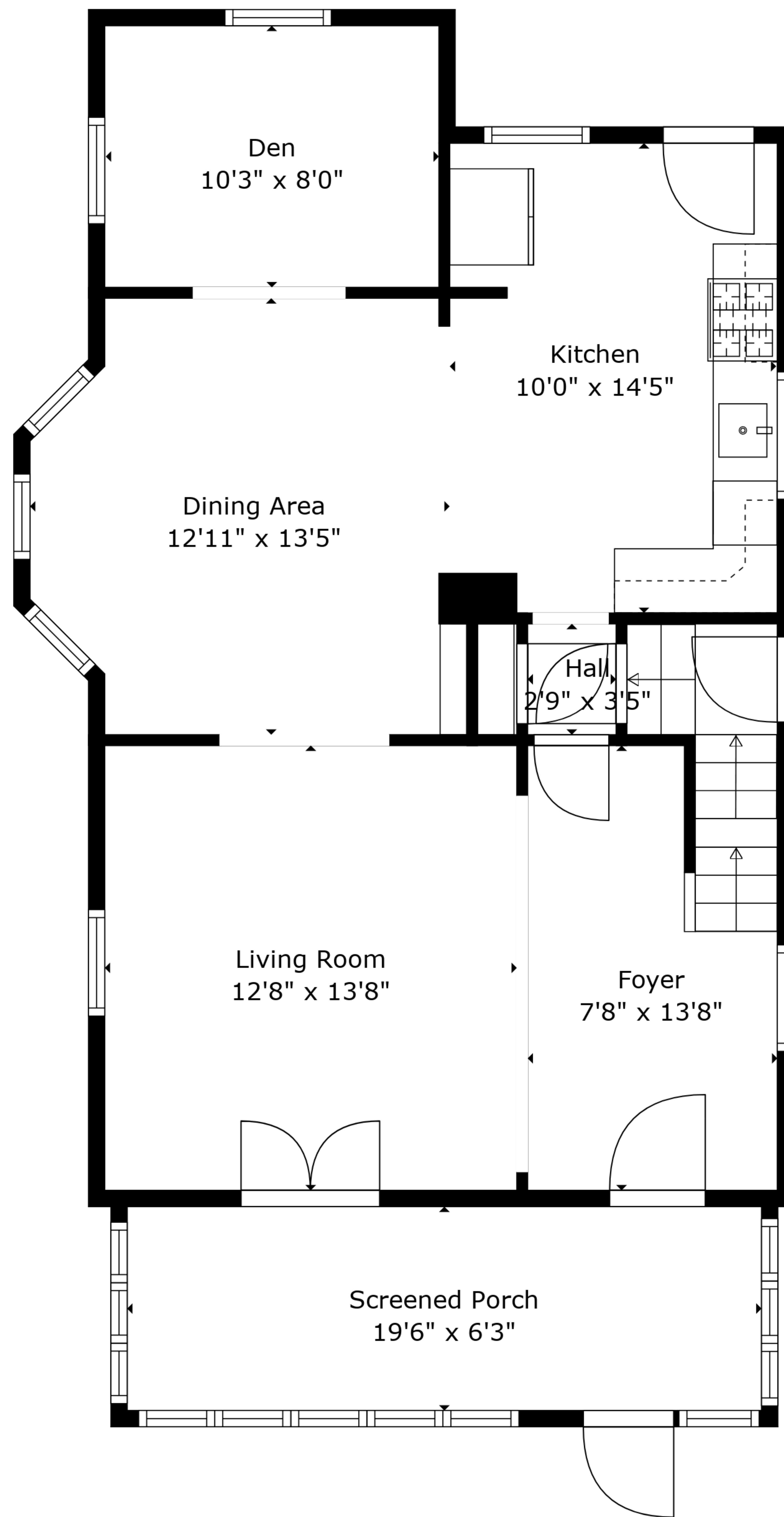


**TOTAL: 1217 sq. ft**

BELOW GROUND: 0 sq. ft, FLOOR 2: 719 sq. ft, FLOOR 3: 498 sq. ft  
EXCLUDED AREAS: BASEMENT: 657 sq. ft, SCREENED PORCH: 122 sq. ft, LOW CEILING: 80 sq. ft

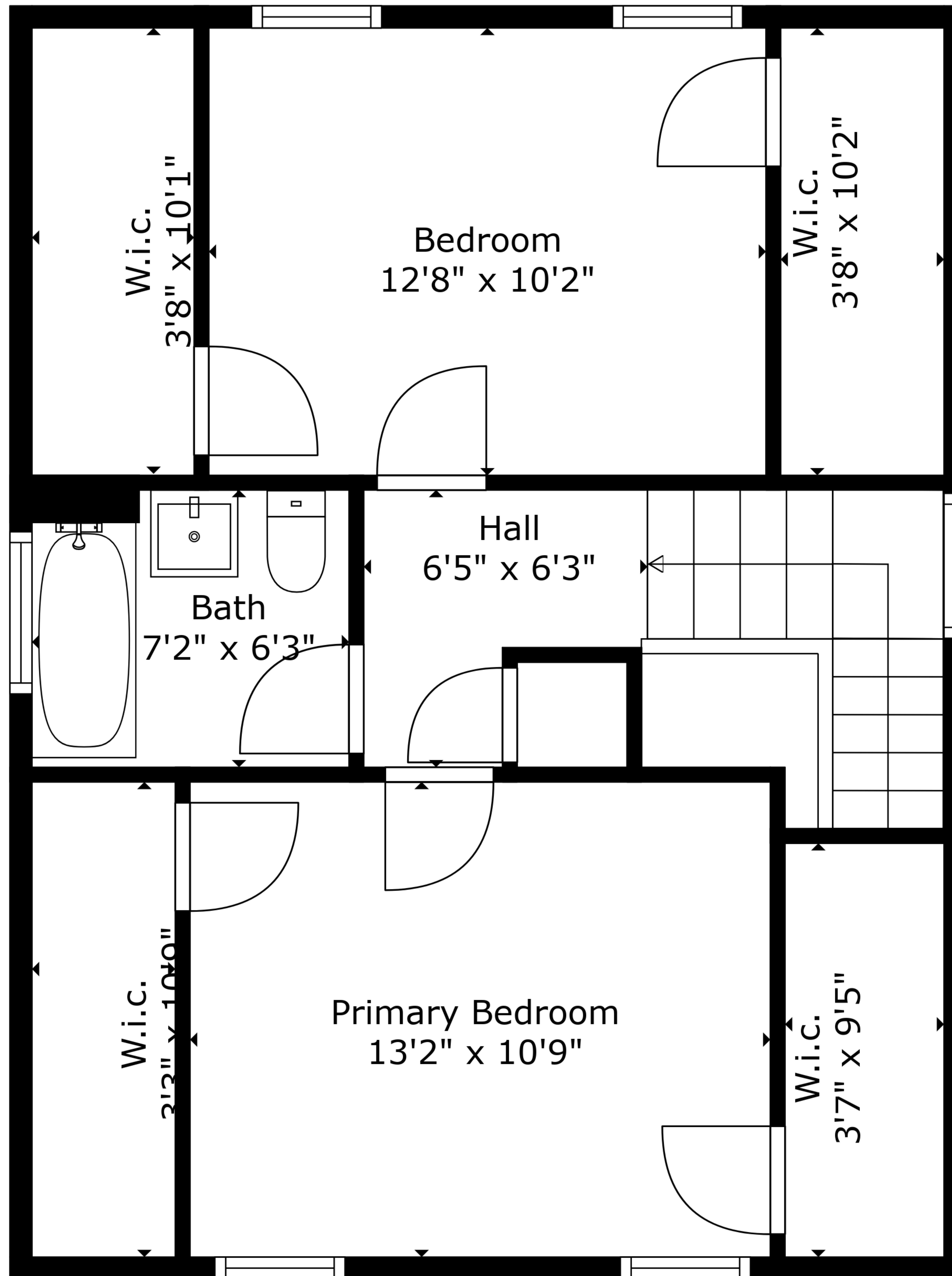
Measurements Deemed Highly Reliable But Not Guaranteed. Measured By Cubicasa Tech.



**TOTAL: 1217 sq. ft**

BELOW GROUND: 0 sq. ft, FLOOR 2: 719 sq. ft, FLOOR 3: 498 sq. ft  
 EXCLUDED AREAS: BASEMENT: 657 sq. ft, SCREENED PORCH: 122 sq. ft, LOW CEILING: 80 sq. ft

Measurements Deemed Highly Reliable But Not Guaranteed. Measured By Cubicasa Tech.



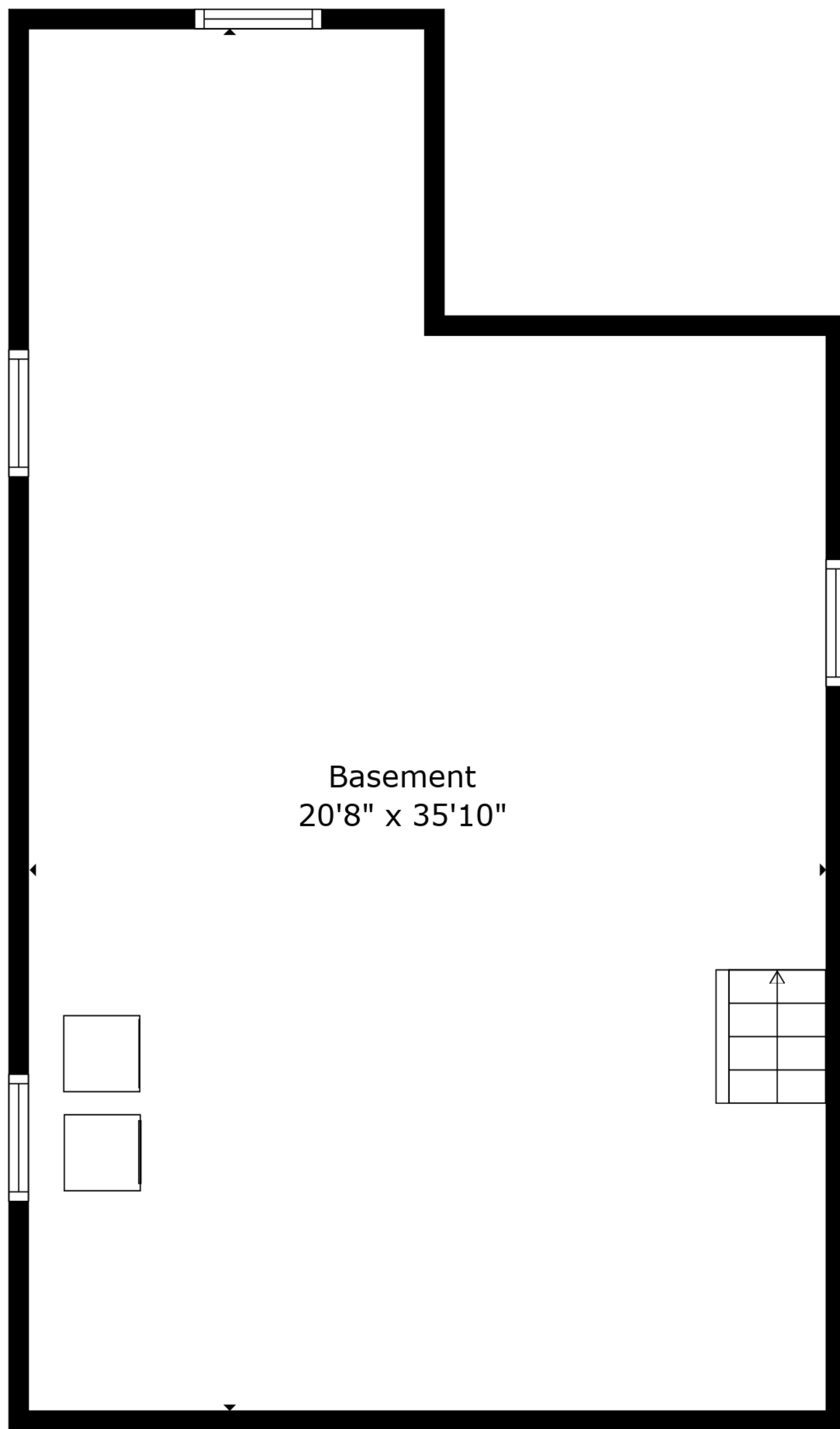
**TOTAL: 1217 sq. ft**

BELOW GROUND: 0 sq. ft, FLOOR 2: 719 sq. ft, FLOOR 3: 498 sq. ft

EXCLUDED AREAS: BASEMENT: 657 sq. ft, SCREENED PORCH: 122 sq. ft, LOW CEILING: 80 sq. ft

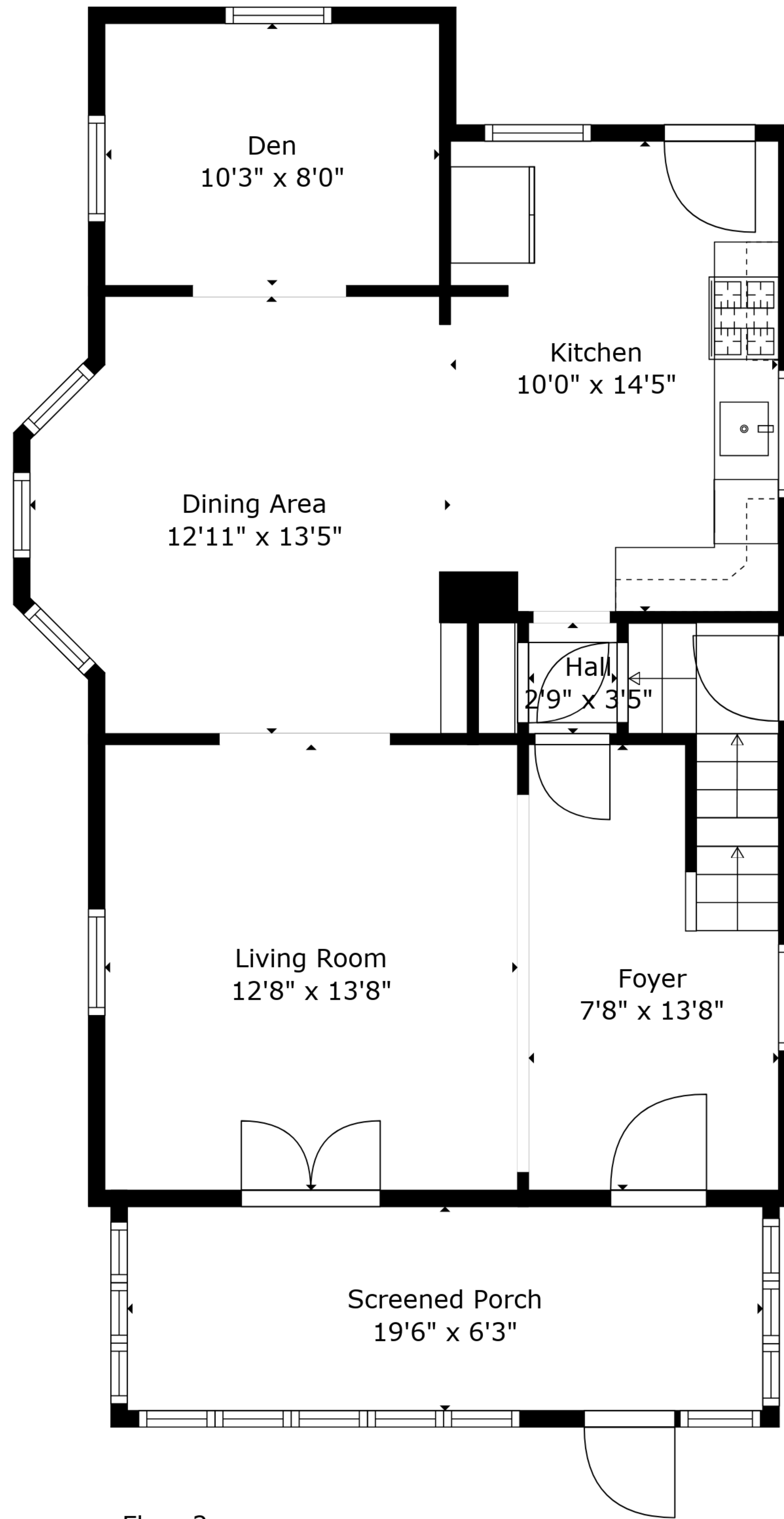
Measurements Deemed Highly Reliable But Not Guaranteed. Measured By Cubicasa Tech.





Basement  
20'8" x 35'10"

Floor 1



Den  
10'3" x 8'0"

Kitchen  
10'0" x 14'5"

Dining Area  
12'11" x 13'5"

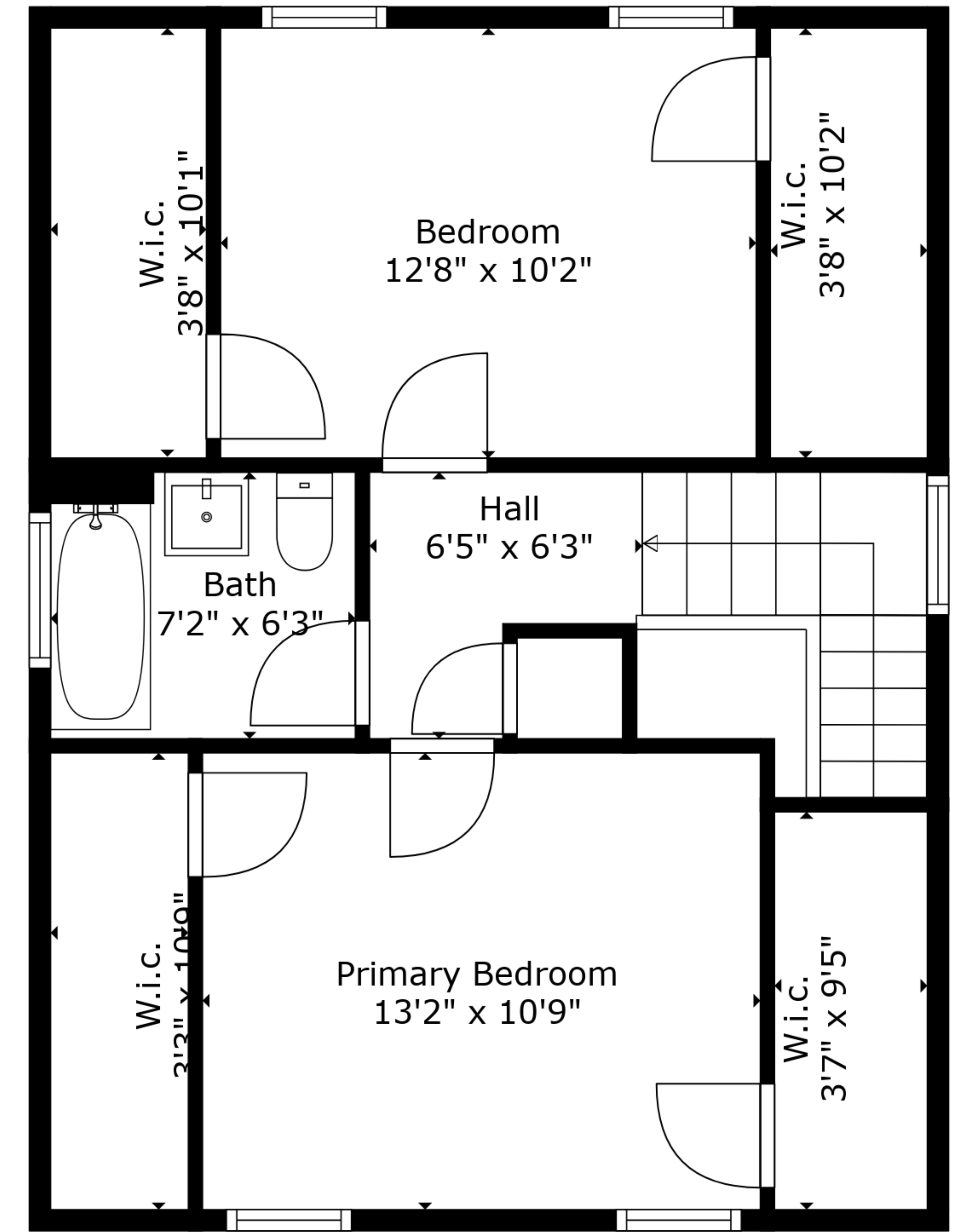
Hall  
2'9" x 3'5"

Living Room  
12'8" x 13'8"

Foyer  
7'8" x 13'8"

Screened Porch  
19'6" x 6'3"

Floor 2



Bedroom  
12'8" x 10'2"

W.i.c.  
3'8" x 10'1"

W.i.c.  
3'8" x 10'2"

Hall  
6'5" x 6'3"

Bath  
7'2" x 6'3"

Primary Bedroom  
13'2" x 10'9"

W.i.c.  
3'2" x 10'0"

W.i.c.  
3'7" x 9'5"

Floor 3

**TOTAL: 1217 sq. ft**

BELOW GROUND: 0 sq. ft, FLOOR 2: 719 sq. ft, FLOOR 3: 498 sq. ft

EXCLUDED AREAS: BASEMENT: 657 sq. ft, SCREENED PORCH: 122 sq. ft, LOW CEILING: 80 sq. ft

Measurements Deemed Highly Reliable But Not Guaranteed. Measured By Cubicasa Tech.

