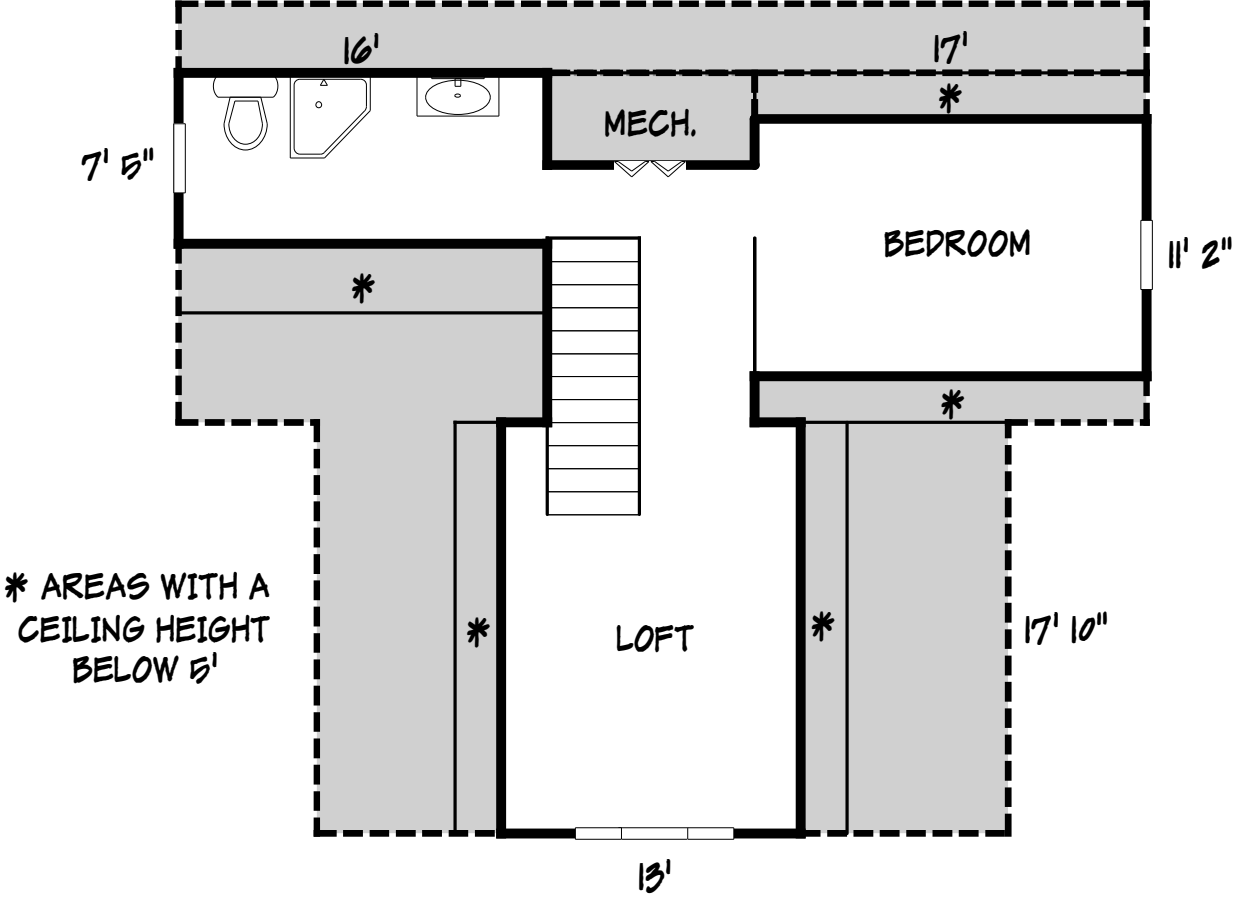


SECOND FLOOR

[640.83 SQ FT]



* AREAS WITH A CEILING HEIGHT BELOW 5'

SECOND FLOOR CEILING HEIGHT IS BELOW 7'

Area Calculations Summary

Living Area		Calculation Details	
First Floor	1298 Sq ft	$42 \times 18.17 =$	763
		$17.83 \times 30 =$	535
Total Living Area (Rounded):		1298 Sq ft	
Porch	60 Sq ft	$10 \times 6 =$	60
Porch	189 Sq ft	$28 \times 6.75 =$	189
Second Floor	640.83 Sq ft	$11.17 \times 17 =$	189.83
		$7.42 \times 16 =$	118.67
		$0.5 \times 2 \times 0 =$	0
		$9 \times 9.17 =$	82.5
		$13 \times 17.83 =$	231.83
		$2 \times 9 =$	18
		$0 \times 2 =$	0