

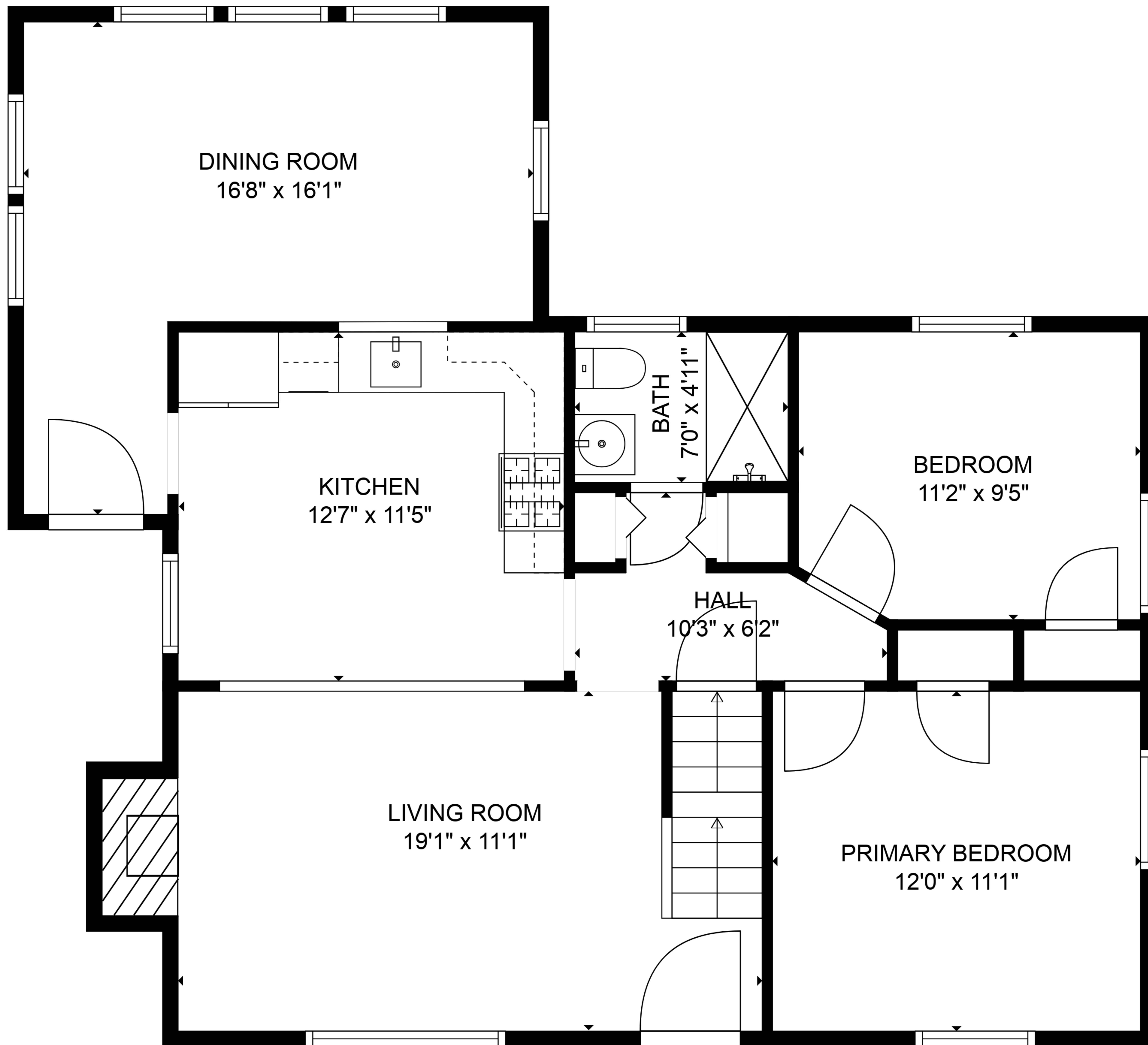
BASEMENT
23'7" x 22'10"

DEN
12'0" x 22'10"

TOTAL: 1539 sq. ft

BELOW GROUND: 265 sq. ft, FLOOR 2: 922 sq. ft, FLOOR 3: 352 sq. ft
EXCLUDED AREAS: BASEMENT: 455 sq. ft, FIREPLACE: 14 sq. ft, LOW CEILING: 61 sq. ft

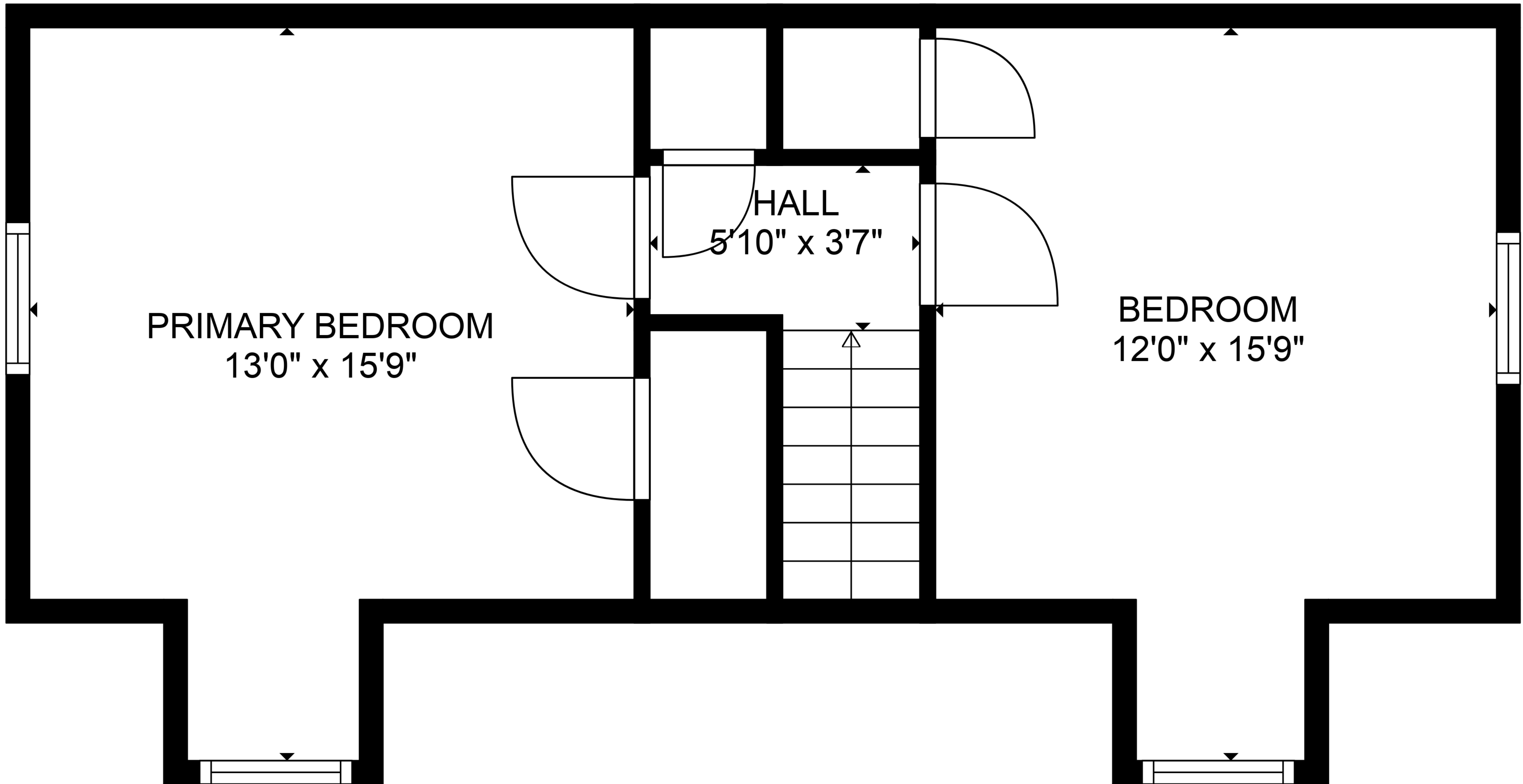
SIZES AND DIMENSIONS ARE APPROXIMATE, ACTUAL MAY VARY.



TOTAL: 1539 sq. ft

BELOW GROUND: 265 sq. ft, FLOOR 2: 922 sq. ft, FLOOR 3: 352 sq. ft
 EXCLUDED AREAS: BASEMENT: 455 sq. ft, FIREPLACE: 14 sq. ft, LOW CEILING: 61 sq. ft

SIZES AND DIMENSIONS ARE APPROXIMATE, ACTUAL MAY VARY.



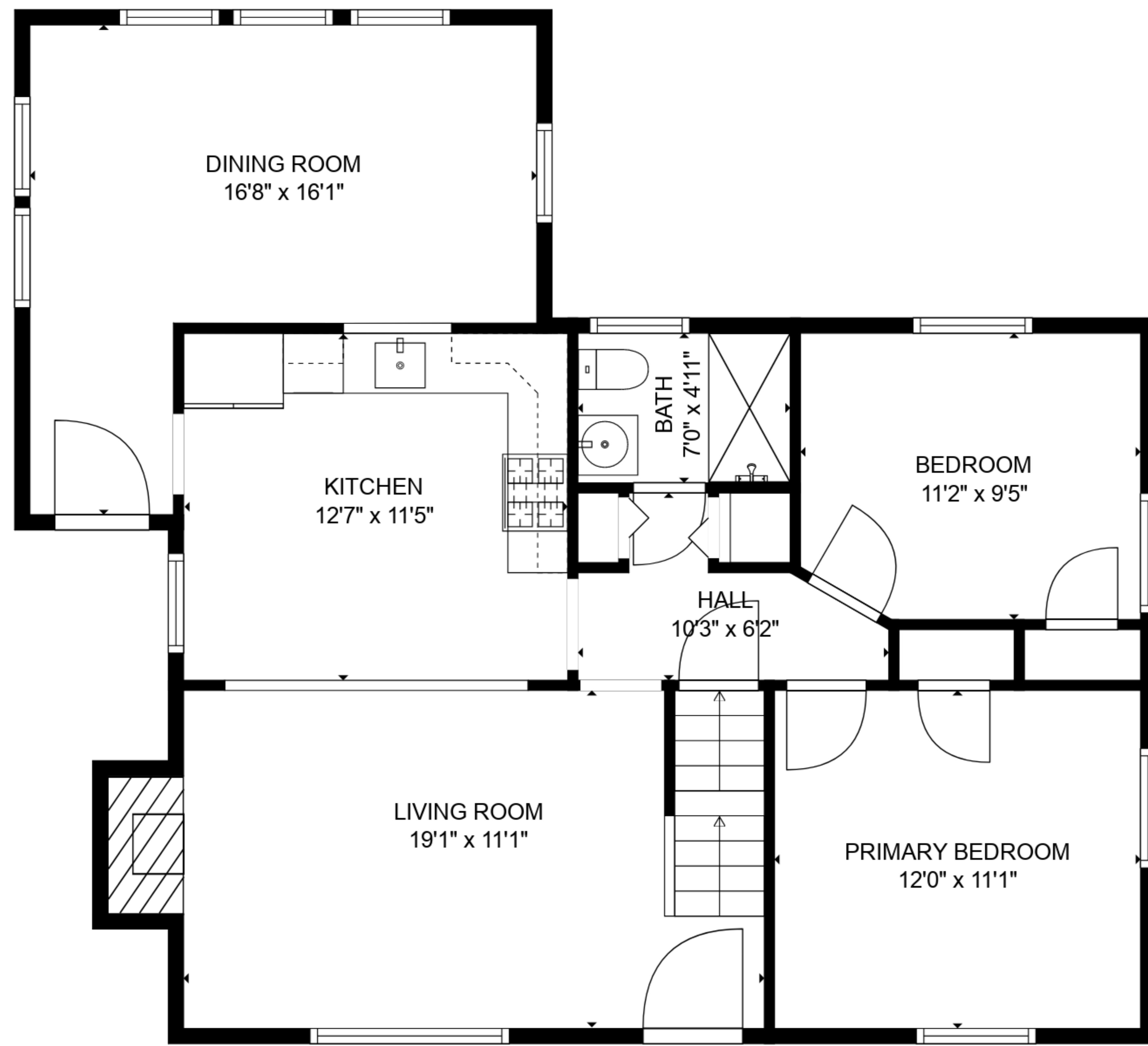
PRIMARY BEDROOM
13'0" x 15'9"

HALL
5'10" x 3'7"

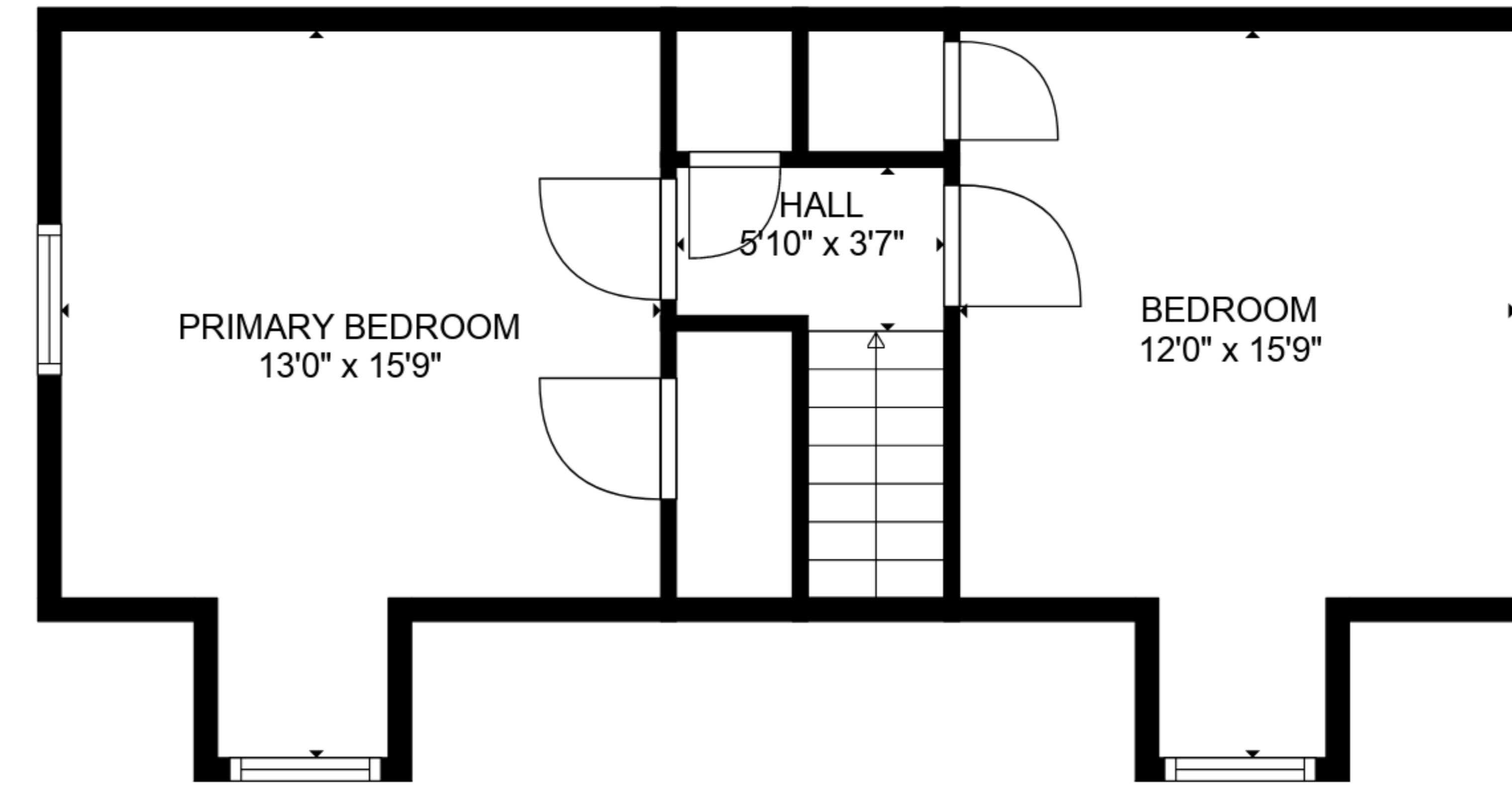
BEDROOM
12'0" x 15'9"

TOTAL: 1539 sq. ft
BELOW GROUND: 265 sq. ft, FLOOR 2: 922 sq. ft, FLOOR 3: 352 sq. ft
EXCLUDED AREAS: BASEMENT: 455 sq. ft, FIREPLACE: 14 sq. ft, LOW CEILING: 61 sq. ft

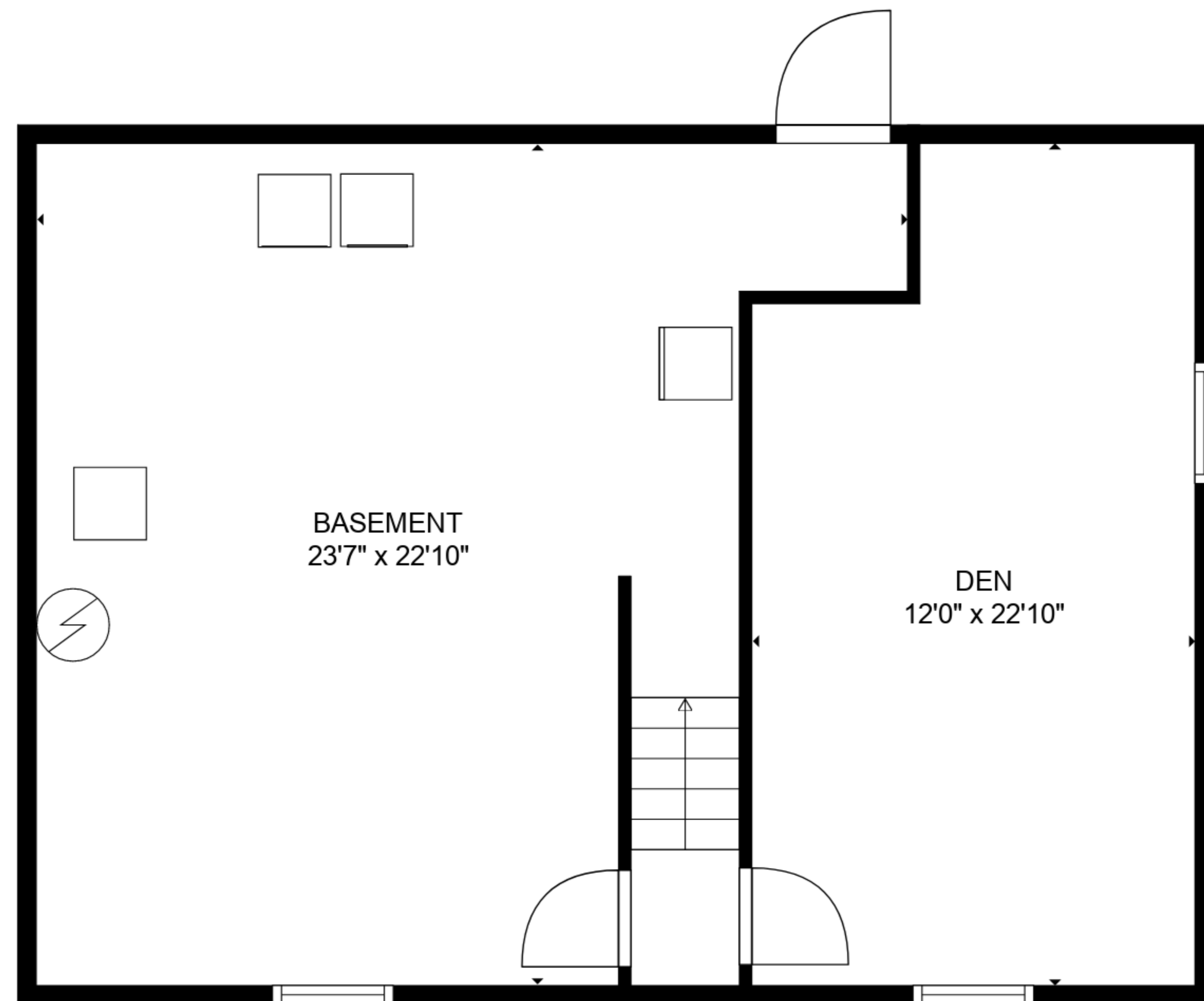
SIZES AND DIMENSIONS ARE APPROXIMATE, ACTUAL MAY VARY.



FLOOR 2



FLOOR 3



FLOOR 1

TOTAL: 1539 sq. ft
 BELOW GROUND: 265 sq. ft, FLOOR 2: 922 sq. ft, FLOOR 3: 352 sq. ft
 EXCLUDED AREAS: BASEMENT: 455 sq. ft, FIREPLACE: 14 sq. ft, LOW CEILING: 61 sq. ft

SIZES AND DIMENSIONS ARE APPROXIMATE, ACTUAL MAY VARY.