

6229 Creekview Court, Roanoke, Roanoke County, Virginia, United States, 24018

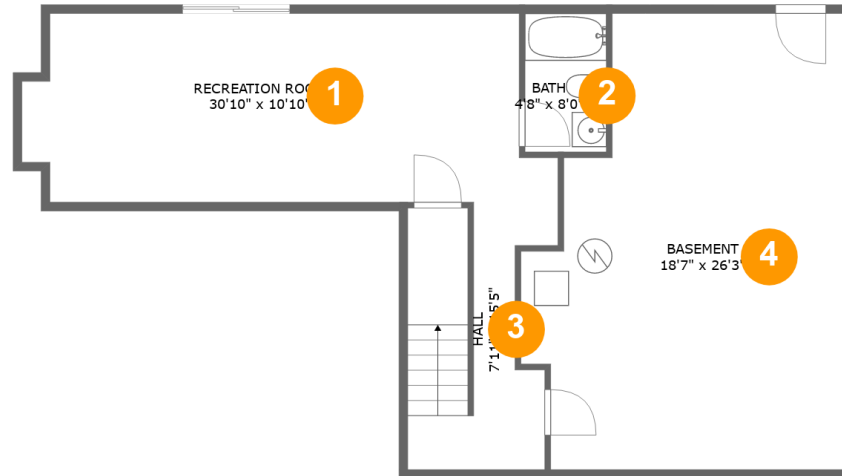


Property Summary

1 garages **4** bedrooms **3** bathrooms **1** half baths

3 floors **3,092** Gross Living Area sqft **3,606** total sqft

6229 Creekview Court, Roanoke, Roanoke County, Virginia, United States, 24018



Room Dimensions

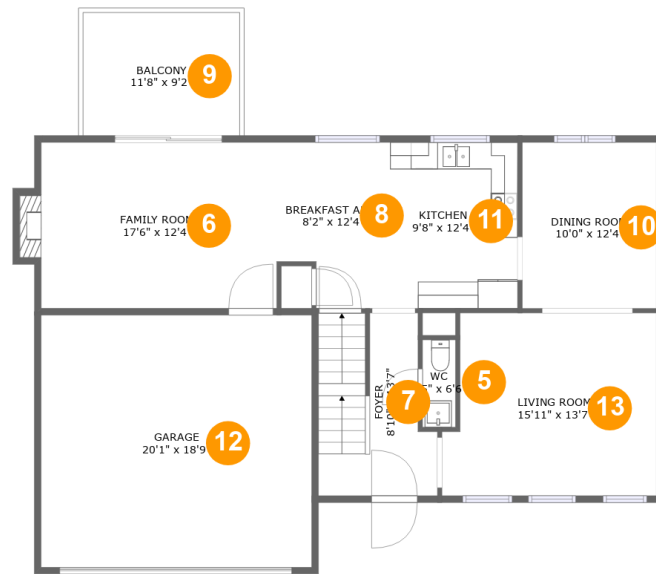
Floor 1

Total sqft: 965

Living area: 965

#	Room name	Dimensions	Area (sqft)	Counted as Living Area
1	Recreation Room	30'10" x 10'10"	307 sq. ft	Yes
2	Bath	4'8" x 8'0"	37 sq. ft	Yes
3	Hall	7'11" x 15'5"	106 sq. ft	Yes
4	Basement	18'7" x 26'3"	421 sq. ft	Yes

6229 Creekview Court, Roanoke, Roanoke County, Virginia, United States, 24018



Room Dimensions

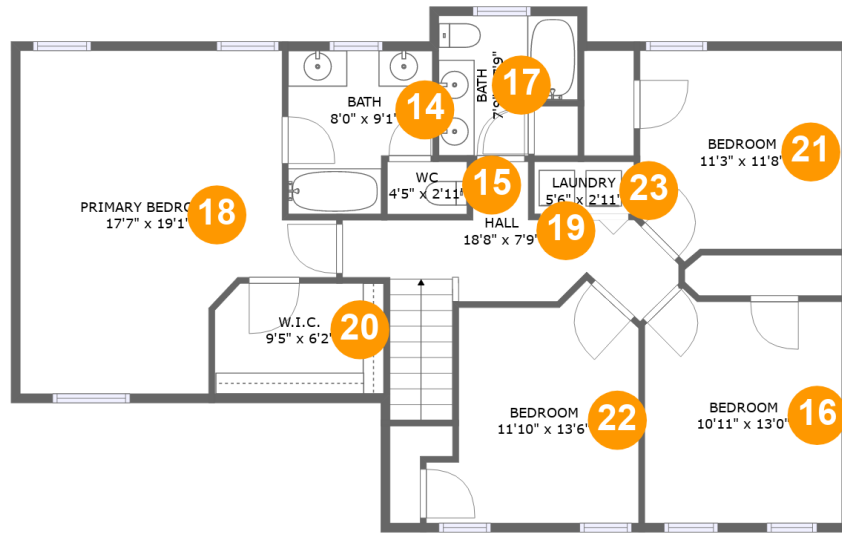
Floor 2

Total sqft: 1500

Living area: 986

#	Room name	Dimensions	Area (sqft)	Counted as Living Area
5	Wc	2'5" x 6'6"	16 sq. ft	Yes
6	Family Room	17'6" x 12'4"	223 sq. ft	Yes
7	Foyer	8'10" x 13'7"	105 sq. ft	Yes
8	Breakfast Area	8'2" x 12'4"	91 sq. ft	Yes
9	Balcony	11'8" x 9'2"	106 sq. ft	No
10	Dining Room	10'0" x 12'4"	123 sq. ft	Yes
11	Kitchen	9'8" x 12'4"	120 sq. ft	Yes
12	Garage	20'1" x 18'9"	377 sq. ft	No
13	Living Room	15'11" x 13'7"	205 sq. ft	Yes

6229 Creekview Court, Roanoke, Roanoke County, Virginia, United States, 24018



Room Dimensions

Floor 3

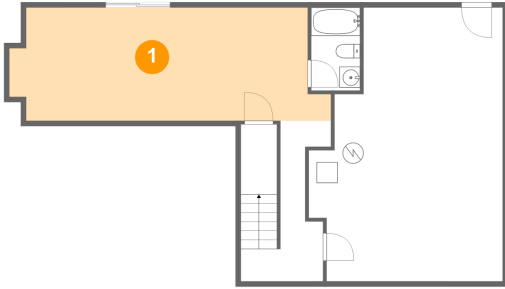
Total sqft: 1141

Living area: 1141

#	Room name	Dimensions	Area (sqft)	Counted as Living Area
14	Bath	8'0" x 9'1"	64 sq. ft	Yes
15	Wc	4'5" x 2'11"	13 sq. ft	Yes
16	Bedroom	10'11" x 13'0"	134 sq. ft	Yes
17	Bath	7'9" x 7'9"	52 sq. ft	Yes
18	Primary Bedroom	17'7" x 19'1"	262 sq. ft	Yes
19	Hall	18'8" x 7'9"	109 sq. ft	Yes
20	W.i.c.	9'5" x 6'2"	57 sq. ft	Yes
21	Bedroom	11'3" x 11'8"	123 sq. ft	Yes
22	Bedroom	11'10" x 13'6"	128 sq. ft	Yes
23	Laundry	5'6" x 2'11"	16 sq. ft	Yes

6229 Creekview Court, Roanoke, Roanoke County, Virginia, United States, 24018

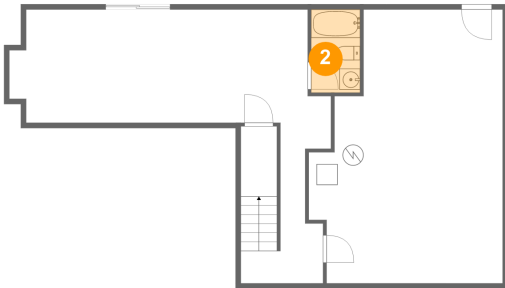
1 Floor 1 - Recreation Room



Dimensions: 30'10" x 10'10"
Area: 307 sq. ft
Counted as Living Area:
Yes

Heated: Yes
Finished: Yes
Enclosed: Yes
Contiguous:
Yes
Permitted: Yes
Wet Space: No
Addition: No
Conversion: No

2 Floor 1 - Bath

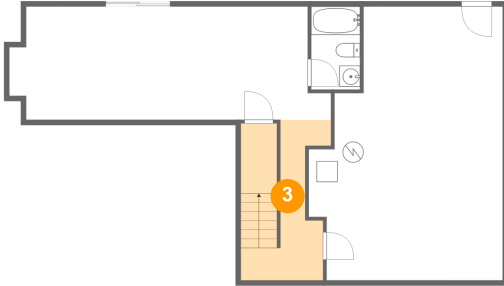


Dimensions: 4'8" x 8'0"
Area: 37 sq. ft
Counted as Living Area:
Yes

Heated: Yes
Finished: Yes
Enclosed: Yes
Contiguous:
Yes
Permitted: Yes
Wet Space: Yes
Addition: No
Conversion: No

6229 Creekview Court, Roanoke, Roanoke County, Virginia, United States, 24018

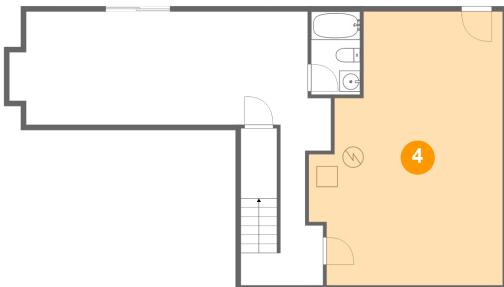
3 Floor 1 - Hall



Dimensions: 7'11" x 15'5"
Area: 106 sq. ft
Counted as Living Area:
Yes

Heated: Yes
Finished: Yes
Enclosed: Yes
Contiguous:
Yes
Permitted: Yes
Wet Space: No
Addition: No
Conversion: No

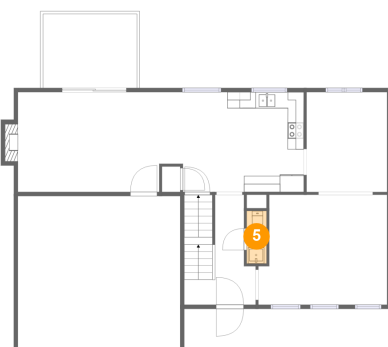
4 Floor 1 - Basement



Dimensions: 18'7" x 26'3"
Area: 421 sq. ft
Counted as Living Area:
Yes

Heated: Yes
Finished: Yes
Enclosed: Yes
Contiguous:
Yes
Permitted: Yes
Wet Space: No
Addition: No
Conversion: No

5 Floor 2 - Wc

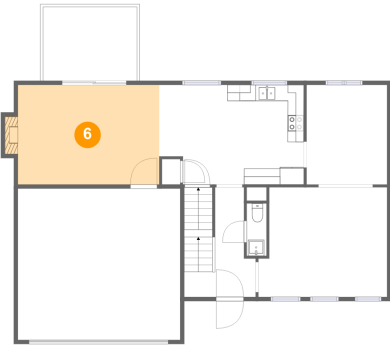


Dimensions: 2'5" x 6'6"
Area: 16 sq. ft
Counted as Living Area:
Yes

Heated: Yes
Finished: Yes
Enclosed: Yes
Contiguous:
Yes
Permitted: Yes
Wet Space: Yes
Addition: No
Conversion: No

6229 Creekview Court, Roanoke, Roanoke County, Virginia, United States, 24018

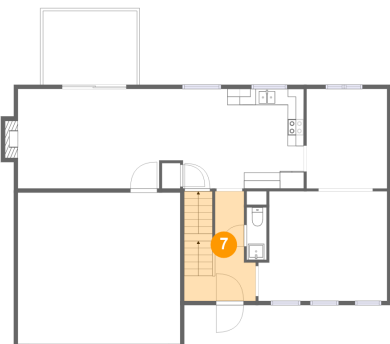
6 Floor 2 - Family Room



Dimensions: 17'6" x 12'4"
Area: 223 sq. ft
Counted as Living Area:
Yes

Heated: Yes
Finished: Yes
Enclosed: Yes
Contiguous:
Yes
Permitted: Yes
Wet Space: No
Addition: No
Conversion: No

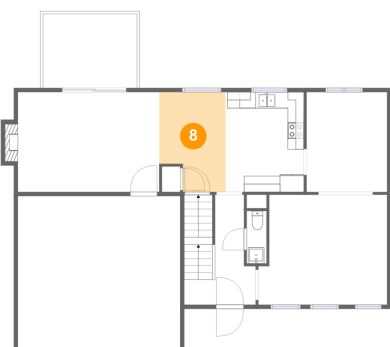
7 Floor 2 - Foyer



Dimensions: 8'10" x 13'7"
Area: 105 sq. ft
Counted as Living Area:
Yes

Heated: Yes
Finished: Yes
Enclosed: Yes
Contiguous:
Yes
Permitted: Yes
Wet Space: No
Addition: No
Conversion: No

8 Floor 2 - Breakfast Area

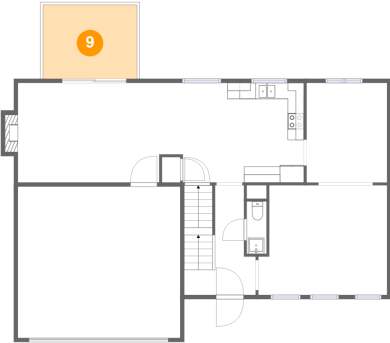


Dimensions: 8'2" x 12'4"
Area: 91 sq. ft
Counted as Living Area:
Yes

Heated: Yes
Finished: Yes
Enclosed: Yes
Contiguous:
Yes
Permitted: Yes
Wet Space: No
Addition: No
Conversion: No

6229 Creekview Court, Roanoke, Roanoke County, Virginia, United States, 24018

9 Floor 2 - Balcony



Dimensions: 11'8" x 9'2"
Area: 106 sq. ft
Counted as Living Area: No

Heated: No
Finished: Yes
Enclosed: No
Contiguous: Yes
Permitted: Yes
Wet Space: No
Addition: No
Conversion: No

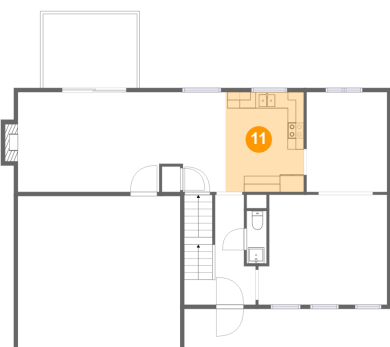
10 Floor 2 - Dining Room



Dimensions: 10'0" x 12'4"
Area: 123 sq. ft
Counted as Living Area: Yes

Heated: Yes
Finished: Yes
Enclosed: Yes
Contiguous: Yes
Permitted: Yes
Wet Space: No
Addition: No
Conversion: No

11 Floor 2 - Kitchen

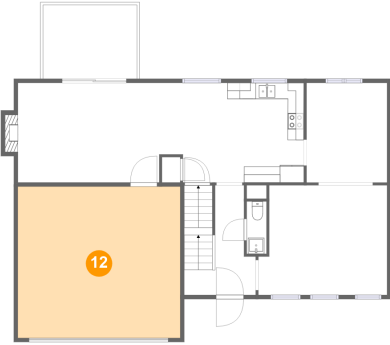


Dimensions: 9'8" x 12'4"
Area: 120 sq. ft
Counted as Living Area: Yes

Heated: Yes
Finished: Yes
Enclosed: Yes
Contiguous: Yes
Permitted: Yes
Wet Space: No
Addition: No
Conversion: No

6229 Creekview Court, Roanoke, Roanoke County, Virginia, United States, 24018

12 Floor 2 - Garage



Dimensions: 20'1" x 18'9"
Area: 377 sq. ft
Counted as Living Area: No

Heated: No
Finished: No
Enclosed: Yes
Contiguous: Yes
Permitted: Yes
Wet Space: No
Addition: No
Conversion: No

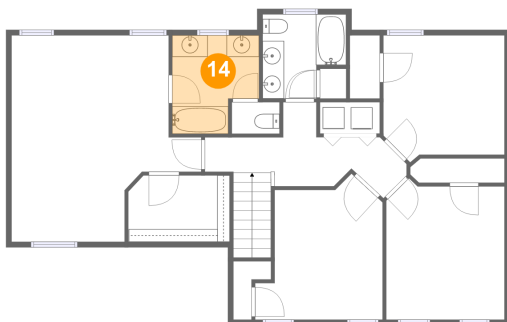
13 Floor 2 - Living Room



Dimensions: 15'11" x 13'7"
Area: 205 sq. ft
Counted as Living Area: Yes

Heated: Yes
Finished: Yes
Enclosed: Yes
Contiguous: Yes
Permitted: Yes
Wet Space: No
Addition: No
Conversion: No

14 Floor 3 - Bath

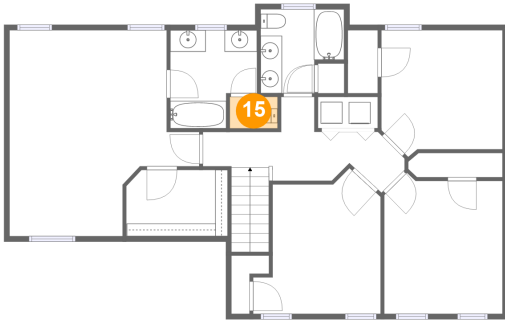


Dimensions: 8'0" x 9'1"
Area: 64 sq. ft
Counted as Living Area: Yes

Heated: Yes
Finished: Yes
Enclosed: Yes
Contiguous: Yes
Permitted: Yes
Wet Space: Yes
Addition: No
Conversion: No

6229 Creekview Court, Roanoke, Roanoke County, Virginia, United States, 24018

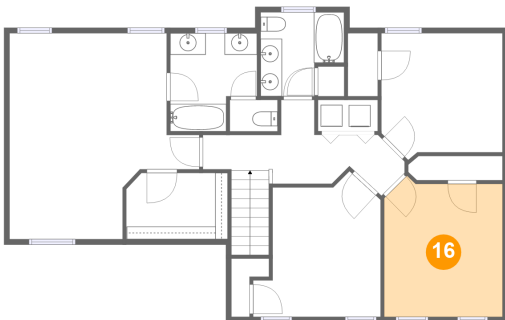
15 Floor 3 - Wc



Dimensions: 4'5" x 2'11"
Area: 13 sq. ft
Counted as Living Area:
Yes

Heated: Yes
Finished: Yes
Enclosed: Yes
Contiguous:
Yes
Permitted: Yes
Wet Space: Yes
Addition: No
Conversion: No

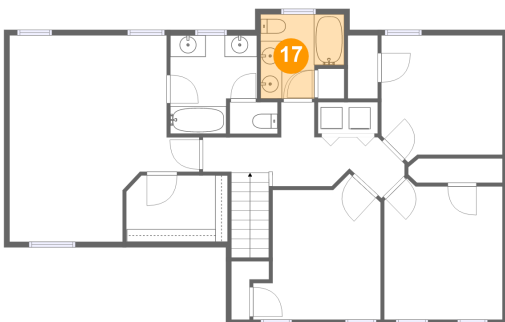
16 Floor 3 - Bedroom



Dimensions: 10'11" x 13'0"
Area: 134 sq. ft
Counted as Living Area:
Yes

Heated: Yes
Finished: Yes
Enclosed: Yes
Contiguous:
Yes
Permitted: Yes
Wet Space: No
Addition: No
Conversion: No

17 Floor 3 - Bath

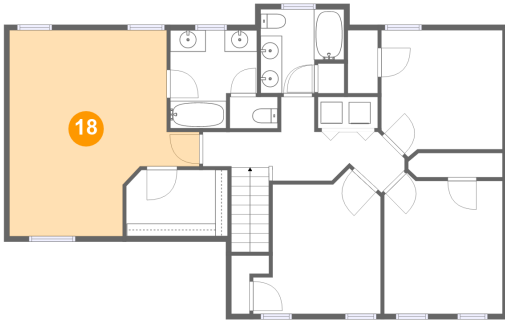


Dimensions: 7'9" x 7'9"
Area: 52 sq. ft
Counted as Living Area:
Yes

Heated: Yes
Finished: Yes
Enclosed: Yes
Contiguous:
Yes
Permitted: Yes
Wet Space: Yes
Addition: No
Conversion: No

6229 Creekview Court, Roanoke, Roanoke County, Virginia, United States, 24018

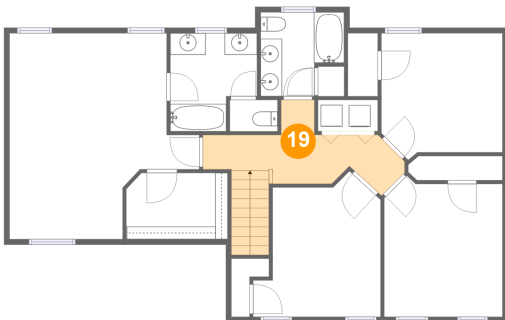
18 Floor 3 - Primary Bedroom



Dimensions: 17'7" x 19'1"
Area: 262 sq. ft
Counted as Living Area:
Yes

Heated: Yes
Finished: Yes
Enclosed: Yes
Contiguous:
Yes
Permitted: Yes
Wet Space: No
Addition: No
Conversion: No

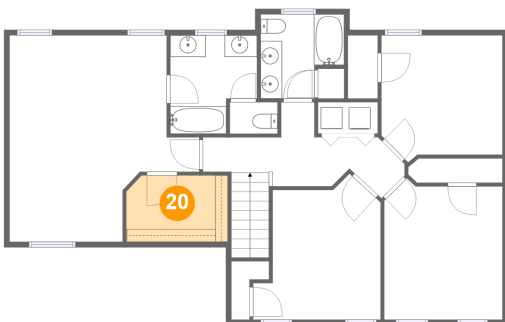
19 Floor 3 - Hall



Dimensions: 18'8" x 7'9"
Area: 109 sq. ft
Counted as Living Area:
Yes

Heated: Yes
Finished: Yes
Enclosed: Yes
Contiguous:
Yes
Permitted: Yes
Wet Space: No
Addition: No
Conversion: No

20 Floor 3 - W.i.c.

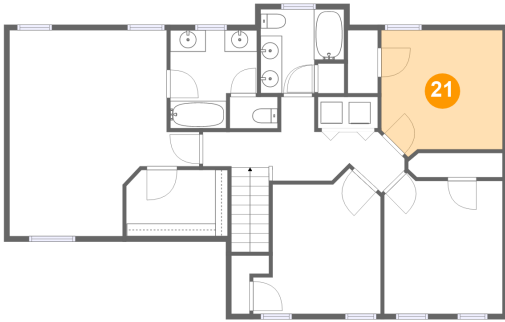


Dimensions: 9'5" x 6'2"
Area: 57 sq. ft
Counted as Living Area:
Yes

Heated: Yes
Finished: Yes
Enclosed: Yes
Contiguous:
Yes
Permitted: Yes
Wet Space: No
Addition: No
Conversion: No

6229 Creekview Court, Roanoke, Roanoke County, Virginia, United States, 24018

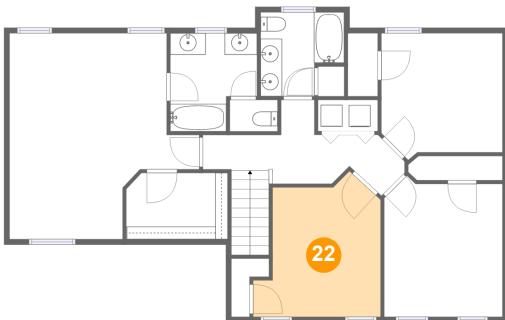
21 Floor 3 - Bedroom



Dimensions: 11'3" x 11'8"
Area: 123 sq. ft
Counted as Living Area:
Yes

Heated: Yes
Finished: Yes
Enclosed: Yes
Contiguous:
Yes
Permitted: Yes
Wet Space: No
Addition: No
Conversion: No

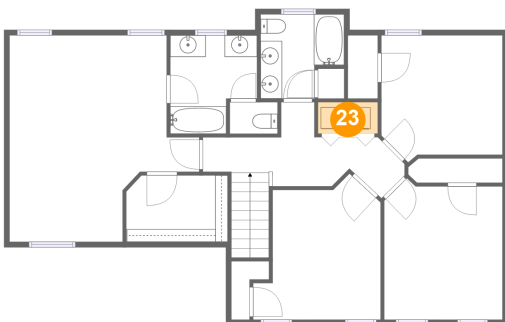
22 Floor 3 - Bedroom



Dimensions: 11'10" x 13'6"
Area: 128 sq. ft
Counted as Living Area:
Yes

Heated: Yes
Finished: Yes
Enclosed: Yes
Contiguous:
Yes
Permitted: Yes
Wet Space: No
Addition: No
Conversion: No

23 Floor 3 - Laundry



Dimensions: 5'6" x 2'11"
Area: 16 sq. ft
Counted as Living Area:
Yes

Heated: Yes
Finished: Yes
Enclosed: Yes
Contiguous:
Yes
Permitted: Yes
Wet Space: No
Addition: No
Conversion: No