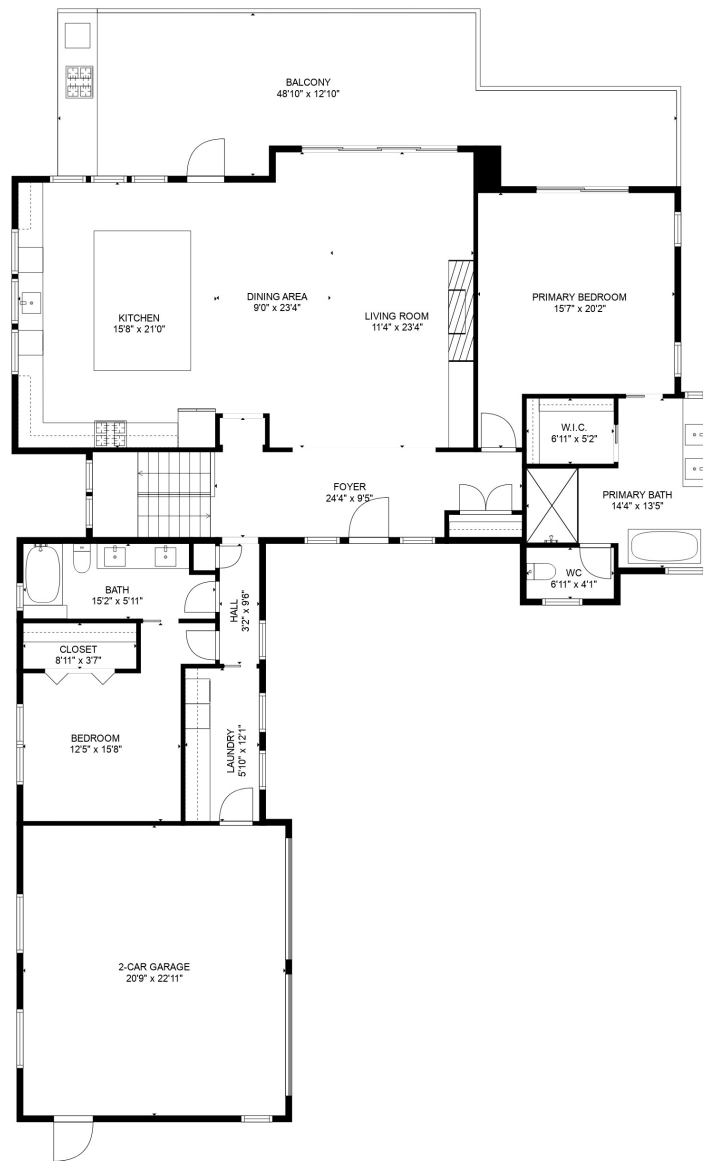


**TOTAL: 3064 sq. ft**

Below Ground: 1125 sq. ft, MAIN LEVEL: 1939 sq. ft

EXCLUDED AREAS: PATIO: 791 sq. ft, 2-CAR GARAGE: 475 sq. ft, BALCONY: 501 sq. ft

SIZES AND DIMENSIONS ARE APPROXIMATE, ACTUAL MAY VARY.

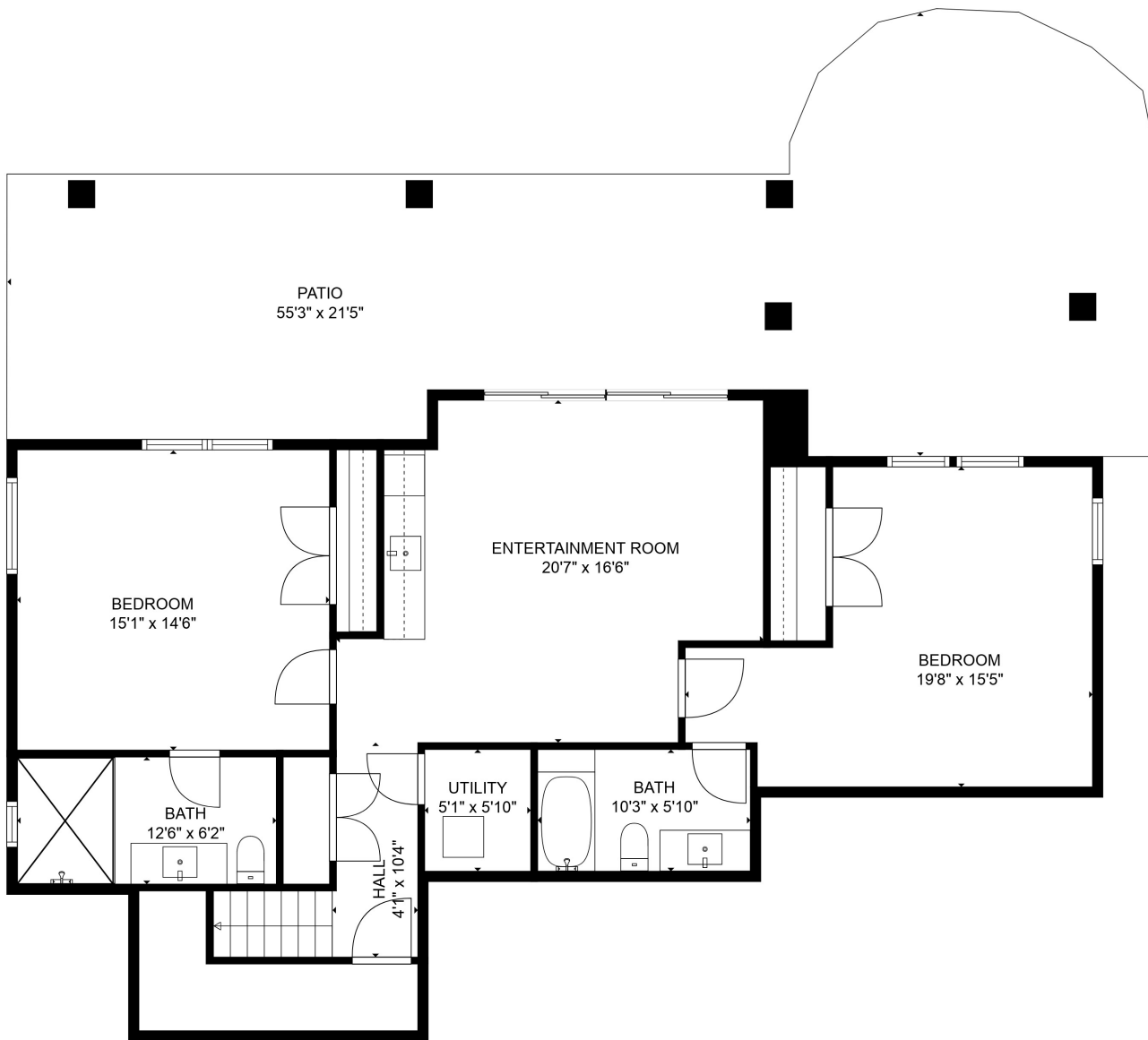


**TOTAL: 3064 sq. ft**

Below Ground: 1125 sq. ft, MAIN LEVEL: 1939 sq. ft

EXCLUDED AREAS: PATIO: 791 sq. ft, 2-CAR GARAGE: 475 sq. ft, BALCONY: 501 sq. ft

SIZES AND DIMENSIONS ARE APPROXIMATE, ACTUAL MAY VARY.



**TOTAL: 3064 sq. ft**

Below Ground: 1125 sq. ft, MAIN LEVEL: 1939 sq. ft

EXCLUDED AREAS: PATIO: 791 sq. ft, 2-CAR GARAGE: 475 sq. ft, BALCONY: 501 sq. ft

SIZES AND DIMENSIONS ARE APPROXIMATE, ACTUAL MAY VARY.