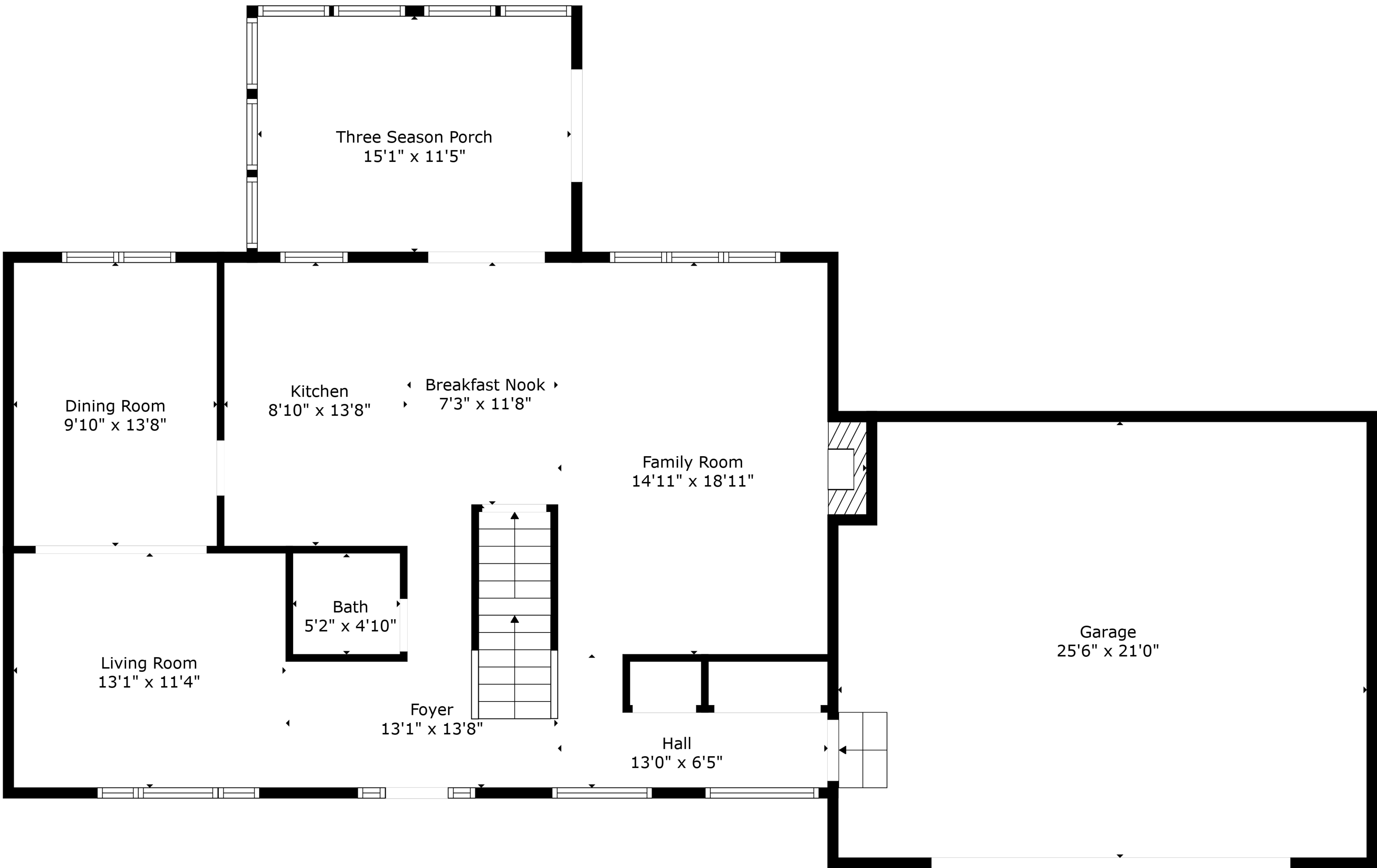


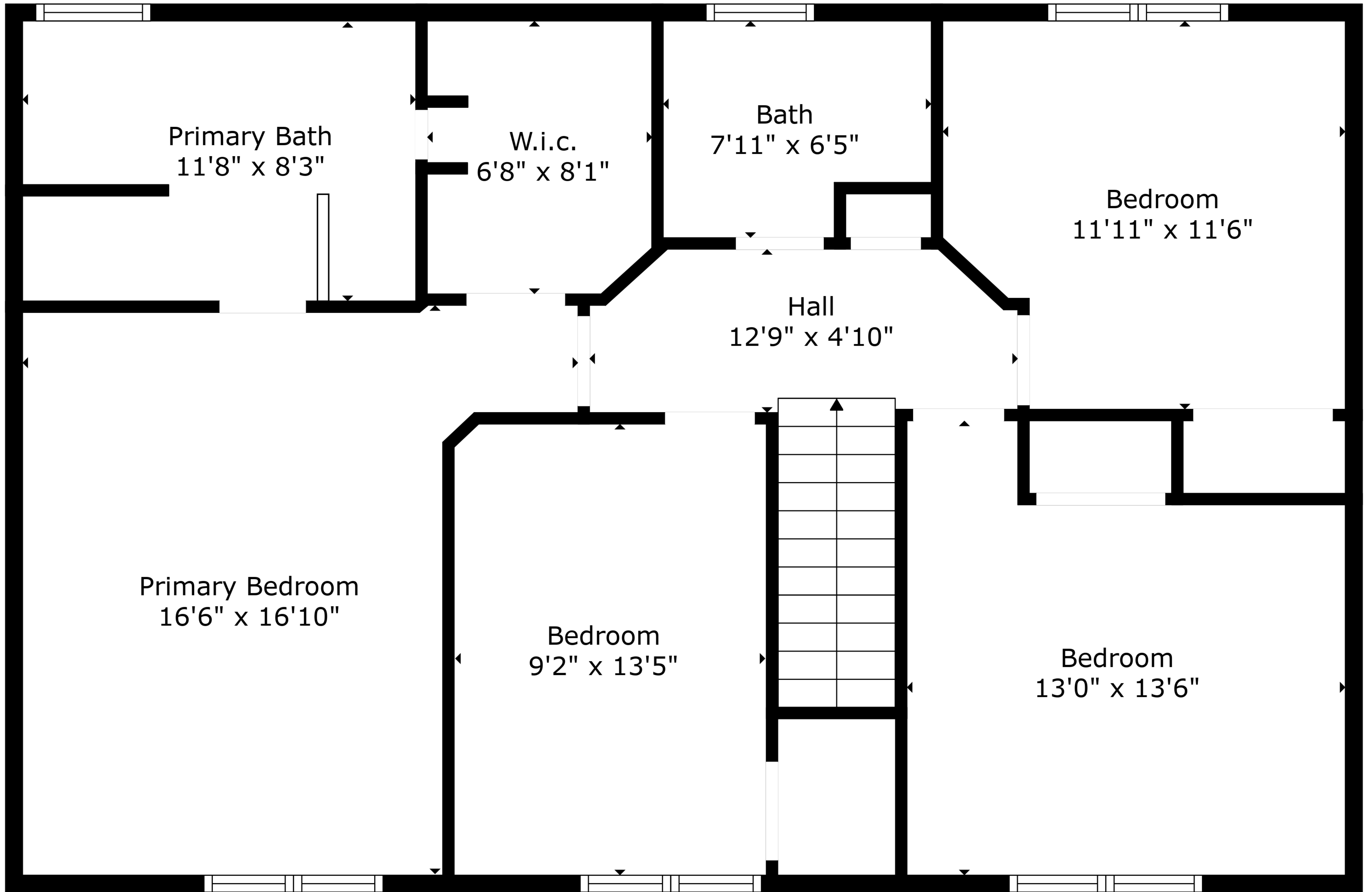
Basement
39'3" x 23'10"

TOTAL: 1992 sq. ft
BELOW GROUND: 0 sq. ft, FLOOR 2: 997 sq. ft, FLOOR 3: 995 sq. ft
EXCLUDED AREAS: BASEMENT: 934 sq. ft, GARAGE: 527 sq. ft, THREE SEASON PORCH: 172 sq. ft,
FIREPLACE: 10 sq. ft



TOTAL: 1992 sq. ft

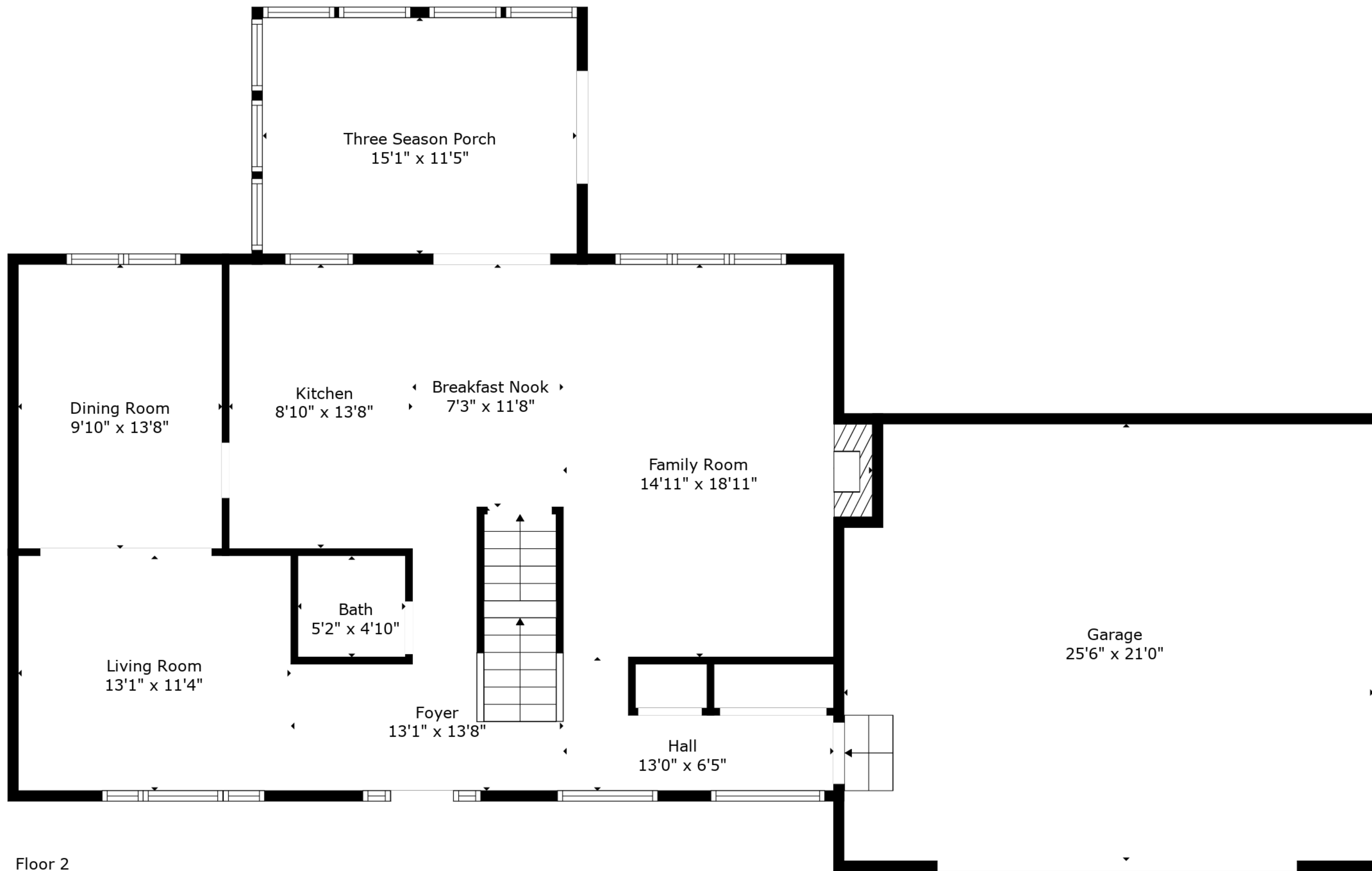
BELOW GROUND: 0 sq. ft, FLOOR 2: 997 sq. ft, FLOOR 3: 995 sq. ft
 EXCLUDED AREAS: BASEMENT: 934 sq. ft, GARAGE: 527 sq. ft, THREE SEASON PORCH: 172 sq. ft,
 FIREPLACE: 10 sq. ft



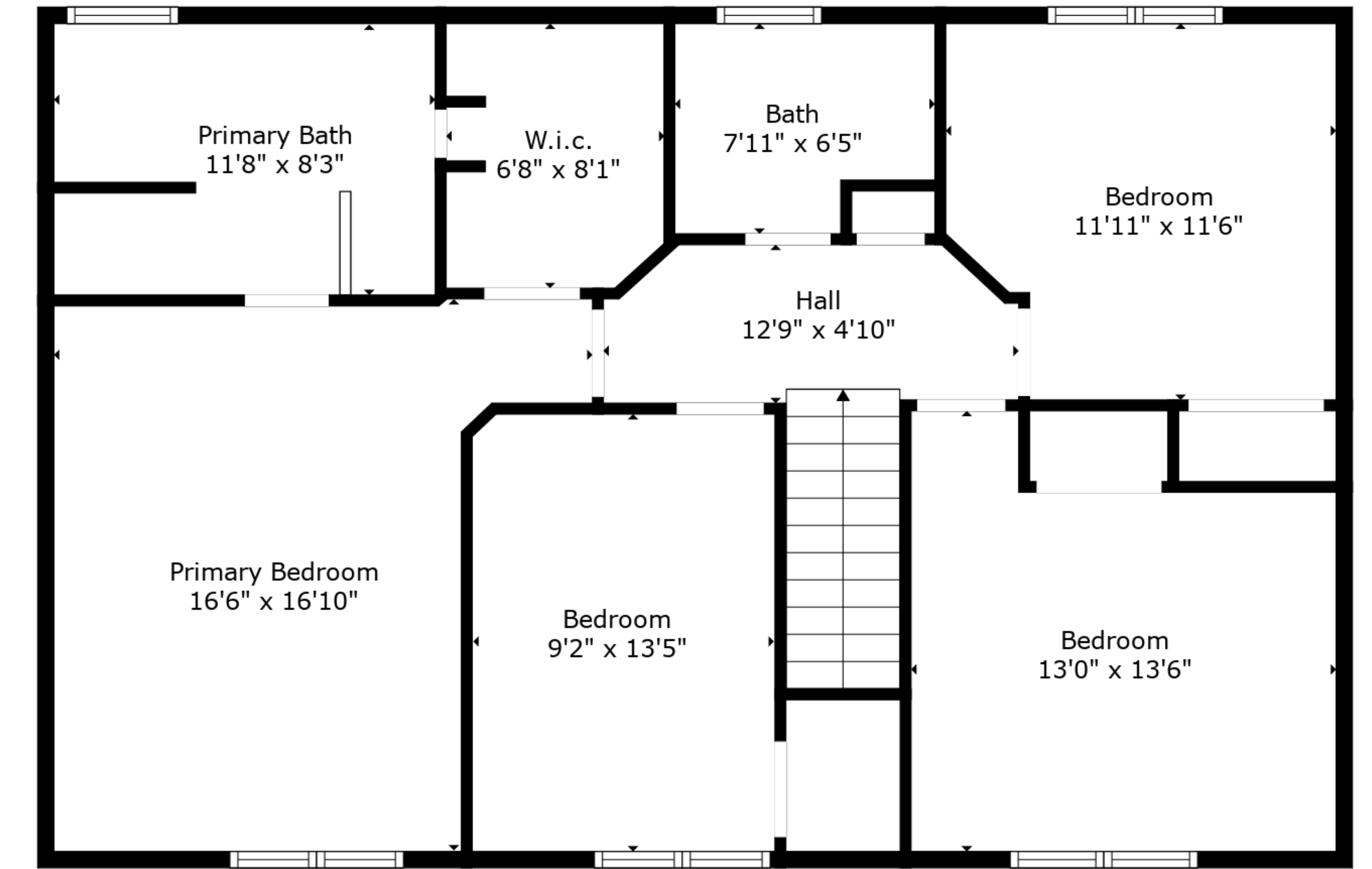
TOTAL: 1992 sq. ft

BELOW GROUND: 0 sq. ft, FLOOR 2: 997 sq. ft, FLOOR 3: 995 sq. ft
 EXCLUDED AREAS: BASEMENT: 934 sq. ft, GARAGE: 527 sq. ft, THREE SEASON PORCH: 172 sq. ft,
 FIREPLACE: 10 sq. ft

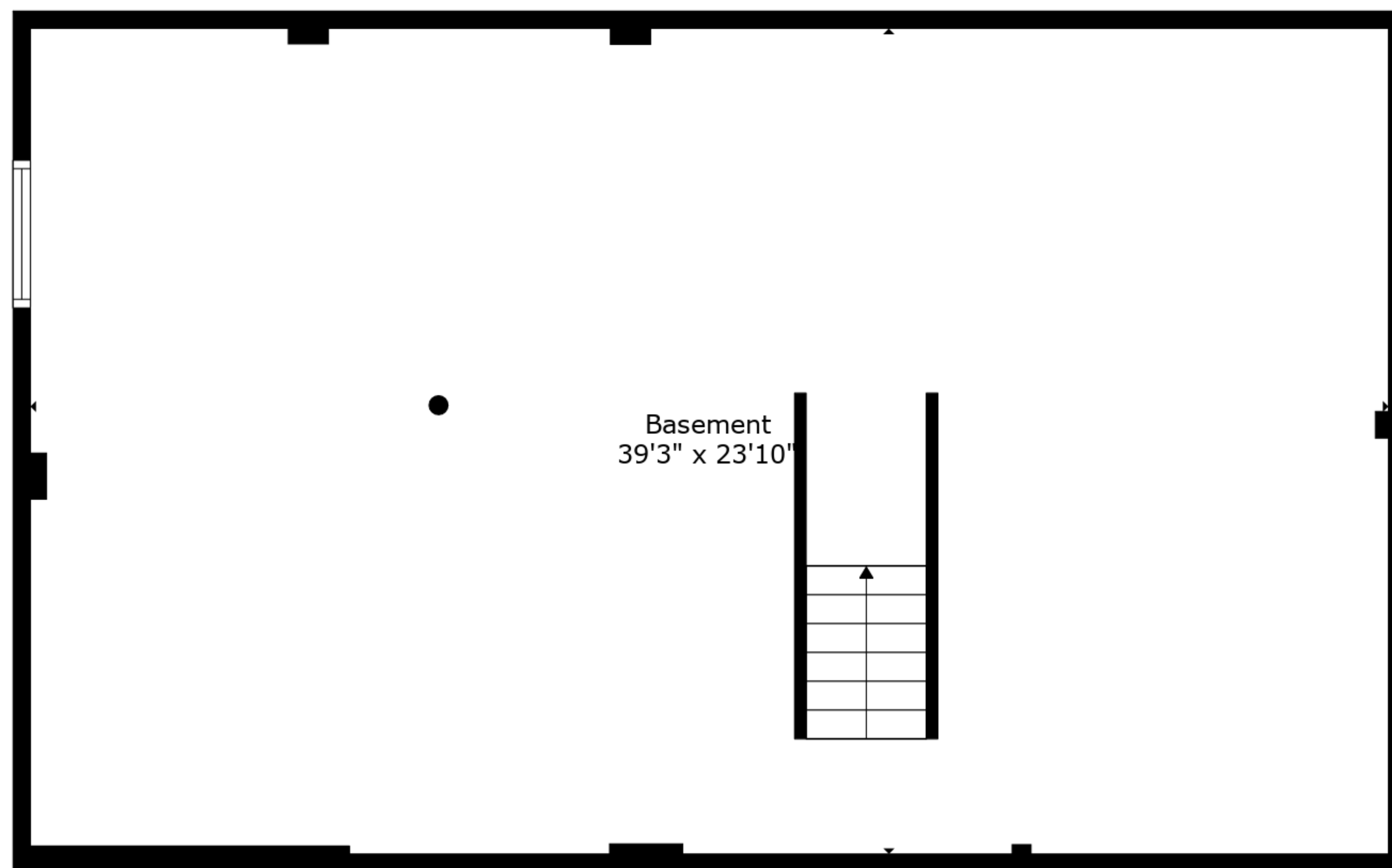
Created By Nordy Photography. Calculations Deemed Highly Reliable But Not Guaranteed.



Floor 2



Floor 3



Floor 1

TOTAL: 1992 sq. ft
 BELOW GROUND: 0 sq. ft, FLOOR 2: 997 sq. ft, FLOOR 3: 995 sq. ft
 EXCLUDED AREAS: BASEMENT: 934 sq. ft, GARAGE: 527 sq. ft, THREE SEASON PORCH: 172 sq. ft,
 FIREPLACE: 10 sq. ft