

Home report

11631 Plantation Trace Drive, Chesterfield, Chesterfield County,  
Virginia, United States, 23838



**Total Area: 2763 sq. ft**  
Floor 1: 1494 sq. ft, Floor 2: 1269 sq. ft  
Excluded: Garage 729 sq. ft, Screened porch 106 sq. ft, Porch 113 sq. ft, Patio 374 sq. ft, Deck 331 sq. ft, Open to below 45 sq. ft, Low ceiling 144 sq. ft, Walls: 235 sq. ft

Property summary

**2**  
Floors

**4**  
Bedrooms

**4**  
Bathrooms

Home report

**11631 Plantation Trace Drive, Chesterfield, Chesterfield County,  
Virginia, United States, 23838**



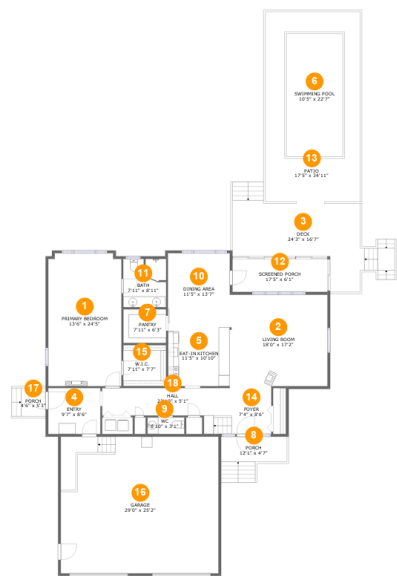
**1**  
Half baths



**1**  
Garages

Home report

11631 Plantation Trace Drive, Chesterfield, Chesterfield County,  
Virginia, United States, 23838



Room dimensions

Floor 1 Total:1494sqft Excluded: 1653sqft

#		Max Dimensions	sqft	Included
1	Primary Bedroom	13'6" x 24'5"	326 sq. ft	Yes
2	Living Room	18'0" x 17'2"	305 sq. ft	Yes
3	Deck	24'3" x 16'7"	331 sq. ft	No
4	Entry	9'7" x 8'6"	81 sq. ft	Yes
5	Eat-in Kitchen	11'5" x 10'10"	123 sq. ft	Yes
6	Swimming Pool	10'5" x 22'7"	235 sq. ft	No
7	Pantry	7'11" x 6'3"	49 sq. ft	Yes
8	Porch	12'1" x 4'7"	80 sq. ft	No
9	WC	6'10" x 3'1"	21 sq. ft	Yes
10	Dining Area	11'5" x 13'7"	155 sq. ft	Yes
11	Bath	7'11" x 8'11"	69 sq. ft	Yes

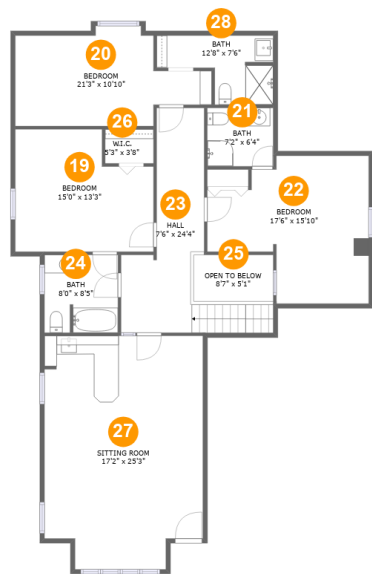
## Home report

**11631 Plantation Trace Drive, Chesterfield, Chesterfield County,  
Virginia, United States, 23838**

#		Max Dimensions	sqft	Included
12	Screened Porch	17'5" x 6'1"	106 sq. ft	No
13	Patio	17'5" x 34'11"	609 sq. ft	No
14	Foyer	7'4" x 8'6"	62 sq. ft	Yes
15	W.I.C.	7'11" x 7'7"	60 sq. ft	Yes
16	Garage	29'0" x 25'2"	729 sq. ft	No
17	Porch	4'6" x 5'3"	33 sq. ft	No
18	Hall	23'10" x 5'1"	138 sq. ft	Yes

Home report

11631 Plantation Trace Drive, Chesterfield, Chesterfield County,  
Virginia, United States, 23838

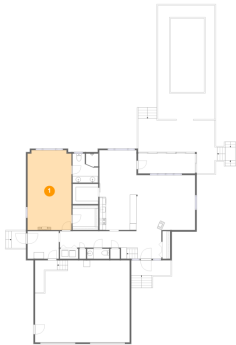


Room dimensions

Floor 2 Total:1269sqft Excluded: 189sqft

#		Max Dimensions	sqft	Included
19	Bedroom	15'0" x 13'3"	165 sq. ft	Yes
20	Bedroom	21'3" x 10'10"	167 sq. ft	Yes
21	Bath	7'2" x 6'4"	45 sq. ft	Yes
22	Bedroom	17'6" x 15'10"	159 sq. ft	Yes
23	Hall	7'6" x 24'4"	178 sq. ft	Yes
24	Bath	8'0" x 8'5"	66 sq. ft	Yes
25	Open To Below	8'7" x 5'1"	44 sq. ft	No
26	W.I.C.	5'3" x 3'8"	19 sq. ft	Yes
27	Sitting Room	17'2" x 25'3"	342 sq. ft	Yes
28	Bath	12'8" x 7'6"	68 sq. ft	Yes

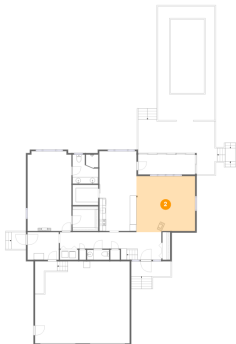
1 Floor 1 - Primary Bedroom



Max Dimensions: 13'6" x 24'5"  
Calculated Area: 326 sq. ft  
Included: Yes

Heated: Yes  
Finished: Yes  
Enclosed: Yes  
Contiguous: Yes  
Permitted: Yes  
Wet space: No  
Addition: No  
Conversion: No

2 Floor 1 - Living Room



Max Dimensions: 18'0" x 17'2"  
Calculated Area: 305 sq. ft  
Included: Yes

Heated: Yes  
Finished: Yes  
Enclosed: Yes  
Contiguous: Yes  
Permitted: Yes  
Wet space: No  
Addition: No  
Conversion: No

3 Floor 1 - Deck



Max Dimensions: 24'3" x 16'7"  
Calculated Area: 331 sq. ft  
Included: No

Heated: No  
Finished: Yes  
Enclosed: No  
Contiguous: Yes  
Permitted: Yes  
Wet space: No  
Addition: No  
Conversion: No

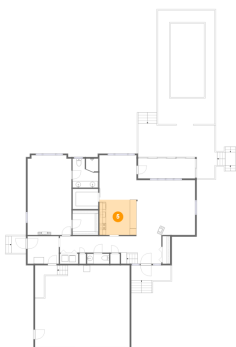
4 Floor 1 - Entry



Max Dimensions: 9'7" x 8'6"  
Calculated Area: 81 sq. ft  
Included: Yes

Heated: Yes  
Finished: Yes  
Enclosed: Yes  
Contiguous: Yes  
Permitted: Yes  
Wet space: No  
Addition: No  
Conversion: No

5 Floor 1 - Eat-in Kitchen



Max Dimensions: 11'5" x 10'10"  
Calculated Area: 123 sq. ft  
Included: Yes

Heated: Yes  
Finished: Yes  
Enclosed: Yes  
Contiguous: Yes  
Permitted: Yes  
Wet space: No  
Addition: No  
Conversion: No

6 Floor 1 - Swimming Pool



Max Dimensions: 10'5" x 22'7"  
Calculated Area: 235 sq. ft  
Included: No

Heated: No  
Finished: No  
Enclosed: No  
Contiguous: Yes  
Permitted: No  
Wet space: No  
Addition: No  
Conversion: No

7 Floor 1 - Pantry



Max Dimensions: 7'11" x 6'3"  
Calculated Area: 49 sq. ft  
Included: Yes

Heated: Yes  
Finished: Yes  
Enclosed: Yes  
Contiguous: Yes  
Permitted: Yes  
Wet space: No  
Addition: No  
Conversion: No

8 Floor 1 - Porch



Max Dimensions: 12'1" x 4'7"  
Calculated Area: 80 sq. ft  
Included: No

Heated: No  
Finished: Yes  
Enclosed: No  
Contiguous: Yes  
Permitted: Yes  
Wet space: No  
Addition: No  
Conversion: No



9 Floor 1 - WC



Max Dimensions: 6'10" x 3'1"  
Calculated Area: 21 sq. ft  
Included: Yes

Heated: Yes  
Finished: Yes  
Enclosed: Yes  
Contiguous: Yes  
Permitted: Yes  
Wet space: No  
Addition: No  
Conversion: No

10 Floor 1 - Dining Area



Max Dimensions: 11'5" x 13'7"  
Calculated Area: 155 sq. ft  
Included: Yes

Heated: Yes  
Finished: Yes  
Enclosed: Yes  
Contiguous: Yes  
Permitted: Yes  
Wet space: No  
Addition: No  
Conversion: No

11 Floor 1 - Bath



Max Dimensions: 7'11" x 8'11"  
Calculated Area: 69 sq. ft  
Included: Yes

Heated: Yes  
Finished: Yes  
Enclosed: Yes  
Contiguous: Yes  
Permitted: Yes  
Wet space: Yes  
Addition: No  
Conversion: No

11631 Plantation Trace Drive, Chesterfield, Chesterfield County,  
Virginia, United States, 23838

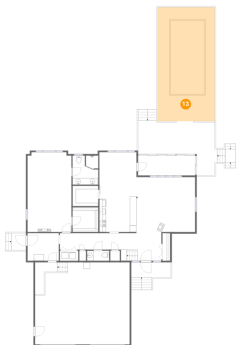
## 12 Floor 1 - Screened Porch



Max Dimensions: 17'5" x 6'1"  
Calculated Area: 106 sq. ft  
Included: No

Heated: No  
Finished: Yes  
Enclosed: No  
Contiguous: Yes  
Permitted: Yes  
Wet space: No  
Addition: No  
Conversion: No

## 13 Floor 1 - Patio



Max Dimensions: 17'5" x 34'11"  
Calculated Area: 609 sq. ft  
Included: No

Heated: No  
Finished: Yes  
Enclosed: No  
Contiguous: Yes  
Permitted: Yes  
Wet space: No  
Addition: No  
Conversion: No

## 14 Floor 1 - Foyer



Max Dimensions: 7'4" x 8'6"  
Calculated Area: 62 sq. ft  
Included: Yes

Heated: Yes  
Finished: Yes  
Enclosed: Yes  
Contiguous: Yes  
Permitted: Yes  
Wet space: No  
Addition: No  
Conversion: No

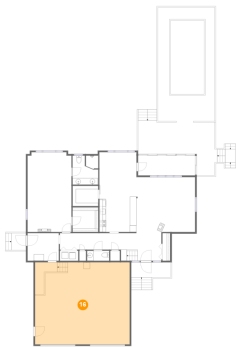
15 Floor 1 - W.I.C.



Max Dimensions: 7'11" x 7'7"  
Calculated Area: 60 sq. ft  
Included: Yes

Heated: Yes  
Finished: Yes  
Enclosed: Yes  
Contiguous: Yes  
Permitted: Yes  
Wet space: No  
Addition: No  
Conversion: No

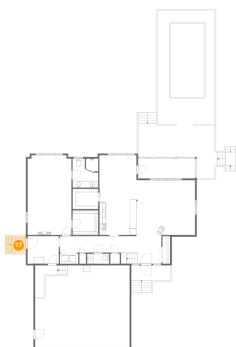
16 Floor 1 - Garage



Max Dimensions: 29'0" x 25'2"  
Calculated Area: 729 sq. ft  
Included: No

Heated: No  
Finished: No  
Enclosed: Yes  
Contiguous: Yes  
Permitted: Yes  
Wet space: No  
Addition: No  
Conversion: No

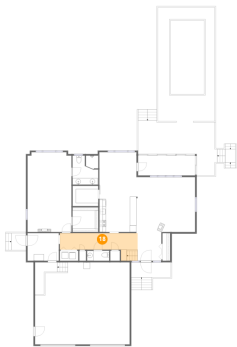
17 Floor 1 - Porch



Max Dimensions: 4'6" x 5'3"  
Calculated Area: 33 sq. ft  
Included: No

Heated: No  
Finished: Yes  
Enclosed: No  
Contiguous: Yes  
Permitted: Yes  
Wet space: No  
Addition: No  
Conversion: No

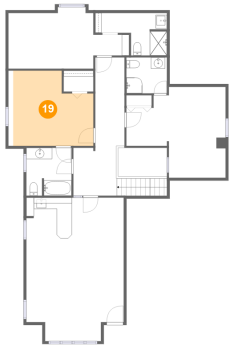
18 Floor 1 - Hall



Max Dimensions: 23'10" x 5'1"  
Calculated Area: 138 sq. ft  
Included: Yes

Heated: Yes  
Finished: Yes  
Enclosed: Yes  
Contiguous: Yes  
Permitted: Yes  
Wet space: No  
Addition: No  
Conversion: No

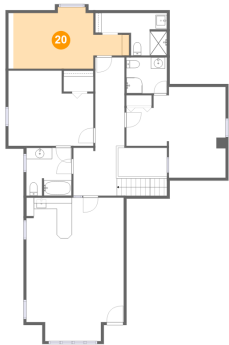
19 Floor 2 - Bedroom



Max Dimensions: 15'0" x 13'3"  
Calculated Area: 165 sq. ft  
Included: Yes

Heated: Yes  
Finished: Yes  
Enclosed: Yes  
Contiguous: Yes  
Permitted: Yes  
Wet space: No  
Addition: No  
Conversion: No

20 Floor 2 - Bedroom

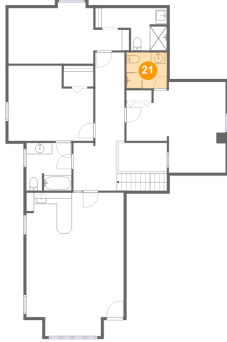


Max Dimensions: 21'3" x 10'10"  
Calculated Area: 167 sq. ft  
Included: Yes

Heated: Yes  
Finished: Yes  
Enclosed: Yes  
Contiguous: Yes  
Permitted: Yes  
Wet space: No  
Addition: No  
Conversion: No

11631 Plantation Trace Drive, Chesterfield, Chesterfield County,  
Virginia, United States, 23838

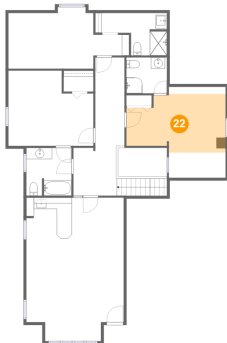
## 21 Floor 2 - Bath



Max Dimensions: 7'2" x 6'4"  
Calculated Area: 45 sq. ft  
Included: Yes

Heated: Yes  
Finished: Yes  
Enclosed: Yes  
Contiguous: Yes  
Permitted: Yes  
Wet space: Yes  
Addition: No  
Conversion: No

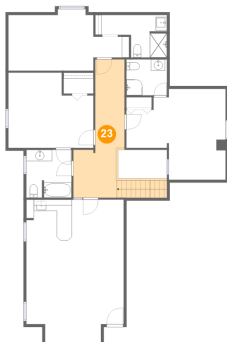
## 22 Floor 2 - Bedroom



Max Dimensions: 17'6" x 15'10"  
Calculated Area: 159 sq. ft  
Included: Yes

Heated: Yes  
Finished: Yes  
Enclosed: Yes  
Contiguous: Yes  
Permitted: Yes  
Wet space: No  
Addition: No  
Conversion: No

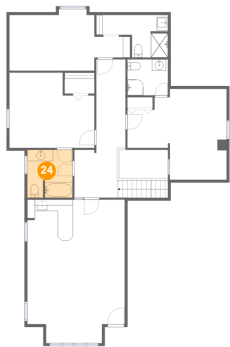
## 23 Floor 2 - Hall



Max Dimensions: 7'6" x 24'4"  
Calculated Area: 178 sq. ft  
Included: Yes

Heated: Yes  
Finished: Yes  
Enclosed: Yes  
Contiguous: Yes  
Permitted: Yes  
Wet space: No  
Addition: No  
Conversion: No

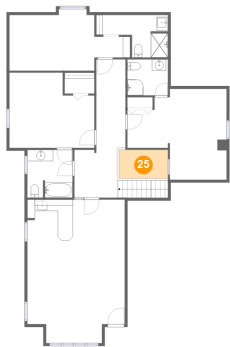
24 Floor 2 - Bath



Max Dimensions: 8'0" x 8'5"  
Calculated Area: 66 sq. ft  
Included: Yes

Heated: Yes  
Finished: Yes  
Enclosed: Yes  
Contiguous: Yes  
Permitted: Yes  
Wet space: Yes  
Addition: No  
Conversion: No

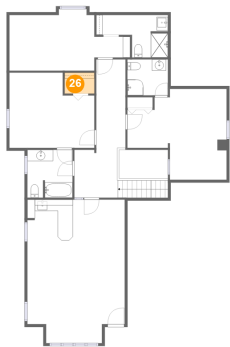
25 Floor 2 - Open To Below



Max Dimensions: 8'7" x 5'1"  
Calculated Area: 44 sq. ft  
Included: No

Heated: No  
Finished: No  
Enclosed: No  
Contiguous: Yes  
Permitted: No  
Wet space: No  
Addition: No  
Conversion: No

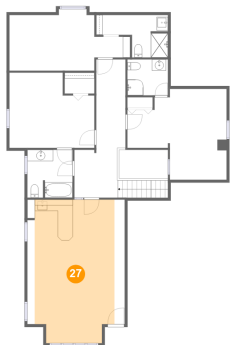
26 Floor 2 - W.I.C.



Max Dimensions: 5'3" x 3'8"  
Calculated Area: 19 sq. ft  
Included: Yes

Heated: Yes  
Finished: Yes  
Enclosed: Yes  
Contiguous: Yes  
Permitted: Yes  
Wet space: No  
Addition: No  
Conversion: No

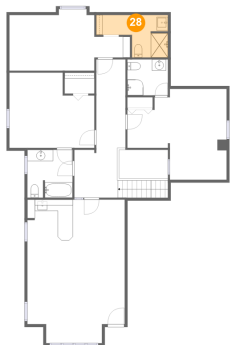
27 Floor 2 - Sitting Room



Max Dimensions: 17'2" x 25'3"  
Calculated Area: 342 sq. ft  
Included: Yes

Heated: Yes  
Finished: Yes  
Enclosed: Yes  
Contiguous: Yes  
Permitted: Yes  
Wet space: No  
Addition: No  
Conversion: No

28 Floor 2 - Bath



Max Dimensions: 12'8" x 7'6"  
Calculated Area: 68 sq. ft  
Included: Yes

Heated: Yes  
Finished: Yes  
Enclosed: Yes  
Contiguous: Yes  
Permitted: Yes  
Wet space: Yes  
Addition: No  
Conversion: No