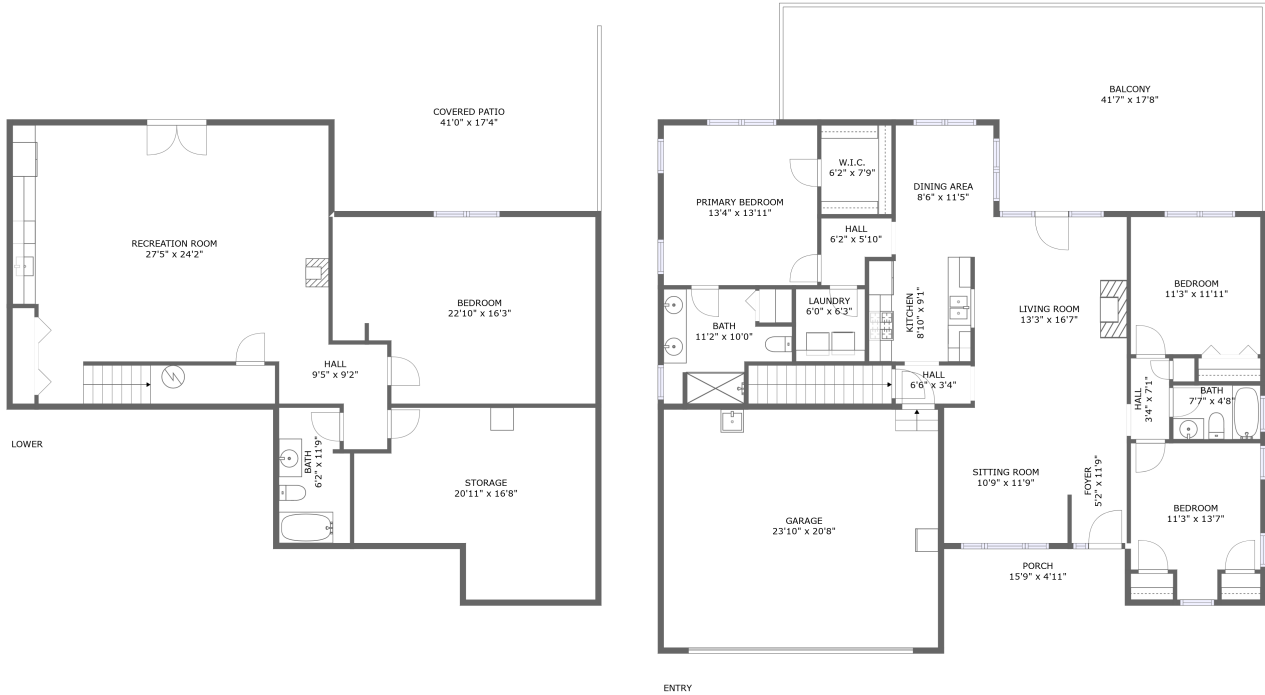


1285 Idlewood Road, Hardy, Franklin County, Virginia, United States, 24101




Property Summary


 **1** garages

 **4** bedrooms

 **3** bathrooms

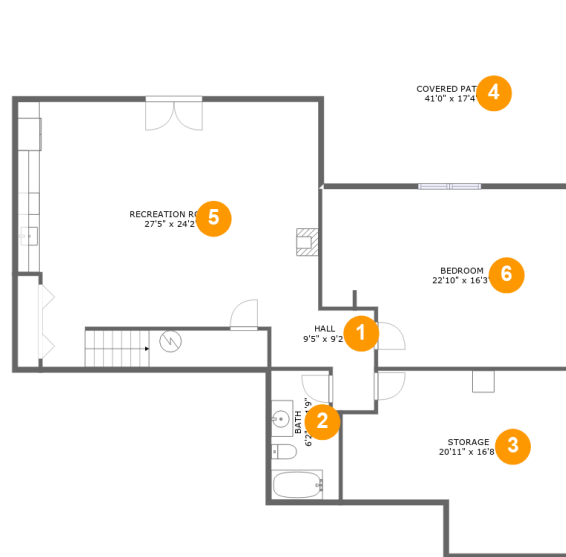
 **0** half baths

 **2** floors

 **2,743** Gross Living Area sqft

 **4,833** total sqft

1285 Idlewood Road, Hardy, Franklin County, Virginia, United States, 24101

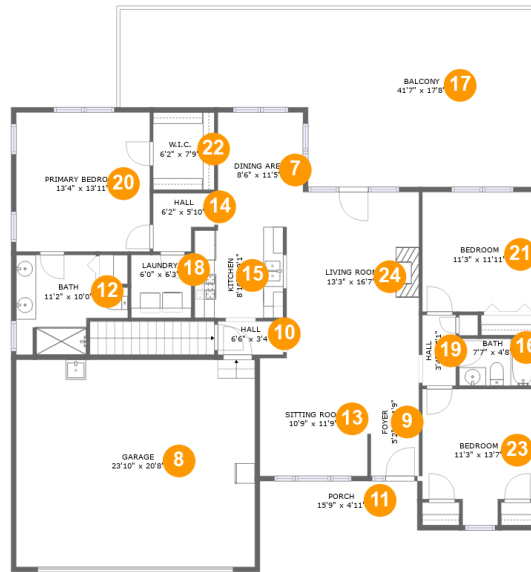


Room Dimensions

Floor 1**Total sqft: 2093****Living area: 1190**

#	Room name	Dimensions	Area (sqft)	Counted as Living Area
1	Hall	9'5" x 9'2"	60 sq. ft	Yes
2	Bath	6'2" x 11'9"	69 sq. ft	Yes
3	Storage	20'11" x 16'8"	290 sq. ft	No
4	Covered Patio	41'0" x 17'4"	574 sq. ft	No
5	Recreation Room	27'5" x 24'2"	620 sq. ft	Yes
6	Bedroom	22'10" x 16'3"	343 sq. ft	Yes

1285 Idlewood Road, Hardy, Franklin County, Virginia, United States, 24101



Room Dimensions

Floor 2

Total sqft: 2740

Living area: 1553

#	Room name	Dimensions	Area (sqft)	Counted as Living Area
7	Dining Area	8'6" x 11'5"	95 sq. ft	Yes
8	Garage	23'10" x 20'8"	494 sq. ft	No
9	Foyer	5'2" x 11'9"	59 sq. ft	Yes
10	Hall	6'6" x 3'4"	22 sq. ft	Yes
11	Porch	15'9" x 4'11"	77 sq. ft	No
12	Bath	11'2" x 10'0"	85 sq. ft	Yes
13	Sitting Room	10'9" x 11'9"	127 sq. ft	Yes
14	Hall	6'2" x 5'10"	30 sq. ft	Yes
15	Kitchen	8'10" x 9'1"	82 sq. ft	Yes
16	Bath	7'7" x 4'8"	36 sq. ft	Yes
17	Balcony	41'7" x 17'8"	589 sq. ft	No

**1285 Idlewood Road, Hardy, Franklin County,
Virginia, United States, 24101**

#	Room name	Dimensions	Area (sqft)	Counted as Living Area
18	Laundry	6'0" x 6'3"	38 sq. ft	Yes
19	Hall	3'4" x 7'1"	24 sq. ft	Yes
20	Primary Bedroom	13'4" x 13'11"	186 sq. ft	Yes
21	Bedroom	11'3" x 11'11"	135 sq. ft	Yes
22	W.i.c.	6'2" x 7'9"	48 sq. ft	Yes
23	Bedroom	11'3" x 13'7"	133 sq. ft	Yes
24	Living Room	13'3" x 16'7"	216 sq. ft	Yes

1285 Idlewood Road, Hardy, Franklin County, Virginia, United States, 24101

1 Floor 1 - Hall



Dimensions: 9'5" x 9'2"
Area: 60 sq. ft
Counted as Living Area:
Yes

Heated: Yes
Finished: Yes
Enclosed: Yes
Contiguous:
Yes
Permitted: Yes
Wet Space: No
Addition: No
Conversion: No

2 Floor 1 - Bath

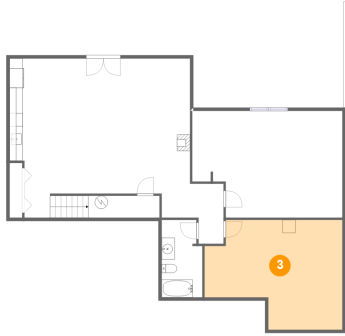


Dimensions: 6'2" x 11'9"
Area: 69 sq. ft
Counted as Living Area:
Yes

Heated: Yes
Finished: Yes
Enclosed: Yes
Contiguous:
Yes
Permitted: Yes
Wet Space: Yes
Addition: No
Conversion: No

**1285 Idlewood Road, Hardy, Franklin County,
Virginia, United States, 24101**

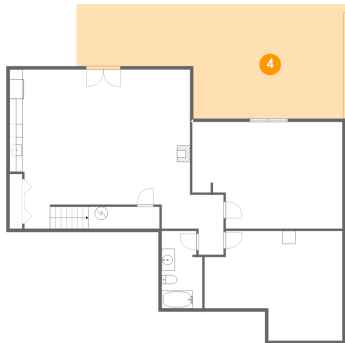
3 Floor 1 - Storage



Dimensions: 20'11" x 16'8"
Area: 290 sq. ft
Counted as Living Area: No

Heated: No
Finished: No
Enclosed: No
Contiguous: Yes
Permitted: Yes
Wet Space: No
Addition: No
Conversion: No

4 Floor 1 - Covered Patio



Dimensions: 41'0" x 17'4"
Area: 574 sq. ft
Counted as Living Area: No

Heated: No
Finished: Yes
Enclosed: No
Contiguous: Yes
Permitted: Yes
Wet Space: No
Addition: No
Conversion: No

5 Floor 1 - Recreation Room

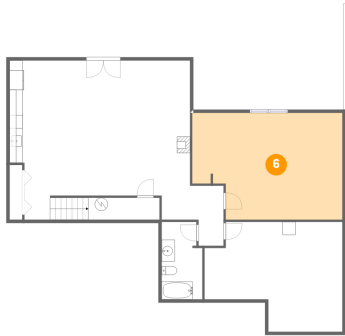


Dimensions: 27'5" x 24'2"
Area: 620 sq. ft
Counted as Living Area:
Yes

Heated: Yes
Finished: Yes
Enclosed: Yes
Contiguous:
Yes
Permitted: Yes
Wet Space: No
Addition: No
Conversion: No

1285 Idlewood Road, Hardy, Franklin County, Virginia, United States, 24101

6 Floor 1 - Bedroom



Dimensions: 22'10" x 16'3"
Area: 343 sq. ft
Counted as Living Area:
Yes

Heated: Yes
Finished: Yes
Enclosed: Yes
Contiguous:
Yes
Permitted: Yes
Wet Space: No
Addition: No
Conversion: No

7 Floor 2 - Dining Area



Dimensions: 8'6" x 11'5"
Area: 95 sq. ft
Counted as Living Area:
Yes

Heated: Yes
Finished: Yes
Enclosed: Yes
Contiguous:
Yes
Permitted: Yes
Wet Space: No
Addition: No
Conversion: No

8 Floor 2 - Garage



Dimensions: 23'10" x 20'8"
Area: 494 sq. ft
Counted as Living Area: No

Heated: No
Finished: No
Enclosed: Yes
Contiguous: Yes
Permitted: Yes
Wet Space: No
Addition: No
Conversion: No

1285 Idlewood Road, Hardy, Franklin County, Virginia, United States, 24101

9 Floor 2 - Foyer



Dimensions: 5'2" x 11'9"
Area: 59 sq. ft
Counted as Living Area:
Yes

Heated: Yes
Finished: Yes
Enclosed: Yes
Contiguous:
Yes
Permitted: Yes
Wet Space: No
Addition: No
Conversion: No

10 Floor 2 - Hall



Dimensions: 6'6" x 3'4"
Area: 22 sq. ft
Counted as Living Area:
Yes

Heated: Yes
Finished: Yes
Enclosed: Yes
Contiguous:
Yes
Permitted: Yes
Wet Space: No
Addition: No
Conversion: No

11 Floor 2 - Porch

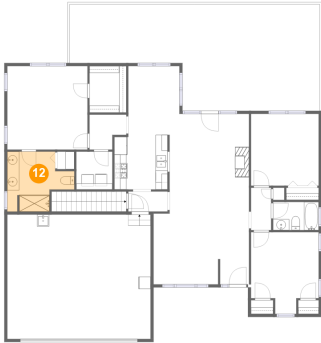


Dimensions: 15'9" x 4'11"
Area: 77 sq. ft
Counted as Living Area: No

Heated: No
Finished: Yes
Enclosed: No
Contiguous: Yes
Permitted: Yes
Wet Space: No
Addition: No
Conversion: No

1285 Idlewood Road, Hardy, Franklin County, Virginia, United States, 24101

12 Floor 2 - Bath



Dimensions: 11'2" x 10'0"
Area: 85 sq. ft
Counted as Living Area:
Yes

Heated: Yes
Finished: Yes
Enclosed: Yes
Contiguous:
Yes
Permitted: Yes
Wet Space: Yes
Addition: No
Conversion: No

13 Floor 2 - Sitting Room



Dimensions: 10'9" x 11'9"
Area: 127 sq. ft
Counted as Living Area:
Yes

Heated: Yes
Finished: Yes
Enclosed: Yes
Contiguous:
Yes
Permitted: Yes
Wet Space: No
Addition: No
Conversion: No

14 Floor 2 - Hall



Dimensions: 6'2" x 5'10"
Area: 30 sq. ft
Counted as Living Area:
Yes

Heated: Yes
Finished: Yes
Enclosed: Yes
Contiguous:
Yes
Permitted: Yes
Wet Space: No
Addition: No
Conversion: No

1285 Idlewood Road, Hardy, Franklin County, Virginia, United States, 24101

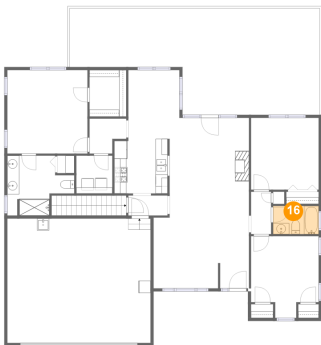
15 Floor 2 - Kitchen



Dimensions: 8'10" x 9'1"
Area: 82 sq. ft
Counted as Living Area:
Yes

Heated: Yes
Finished: Yes
Enclosed: Yes
Contiguous:
Yes
Permitted: Yes
Wet Space: No
Addition: No
Conversion: No

16 Floor 2 - Bath



Dimensions: 7'7" x 4'8"
Area: 36 sq. ft
Counted as Living Area:
Yes

Heated: Yes
Finished: Yes
Enclosed: Yes
Contiguous:
Yes
Permitted: Yes
Wet Space: Yes
Addition: No
Conversion: No

17 Floor 2 - Balcony



Dimensions: 41'7" x 17'8"
Area: 589 sq. ft
Counted as Living Area: No

Heated: No
Finished: Yes
Enclosed: No
Contiguous: Yes
Permitted: Yes
Wet Space: No
Addition: No
Conversion: No

1285 Idlewood Road, Hardy, Franklin County, Virginia, United States, 24101

18 Floor 2 - Laundry



Dimensions: 6'0" x 6'3"
Area: 38 sq. ft
Counted as Living Area:
Yes

Heated: Yes
Finished: Yes
Enclosed: Yes
Contiguous:
Yes
Permitted: Yes
Wet Space: No
Addition: No
Conversion: No

19 Floor 2 - Hall



Dimensions: 3'4" x 7'1"
Area: 24 sq. ft
Counted as Living Area:
Yes

Heated: Yes
Finished: Yes
Enclosed: Yes
Contiguous:
Yes
Permitted: Yes
Wet Space: No
Addition: No
Conversion: No

20 Floor 2 - Primary Bedroom



Dimensions: 13'4" x 13'11"
Area: 186 sq. ft
Counted as Living Area:
Yes

Heated: Yes
Finished: Yes
Enclosed: Yes
Contiguous:
Yes
Permitted: Yes
Wet Space: No
Addition: No
Conversion: No

1285 Idlewood Road, Hardy, Franklin County, Virginia, United States, 24101

21 Floor 2 - Bedroom



Dimensions: 11'3" x 11'11"
Area: 135 sq. ft
Counted as Living Area:
Yes

Heated: Yes
Finished: Yes
Enclosed: Yes
Contiguous:
Yes
Permitted: Yes
Wet Space: No
Addition: No
Conversion: No

22 Floor 2 - W.i.c.



Dimensions: 6'2" x 7'9"
Area: 48 sq. ft
Counted as Living Area:
Yes

Heated: Yes
Finished: Yes
Enclosed: Yes
Contiguous:
Yes
Permitted: Yes
Wet Space: No
Addition: No
Conversion: No

23 Floor 2 - Bedroom



Dimensions: 11'3" x 13'7"
Area: 133 sq. ft
Counted as Living Area:
Yes

Heated: Yes
Finished: Yes
Enclosed: Yes
Contiguous:
Yes
Permitted: Yes
Wet Space: No
Addition: No
Conversion: No

**1285 Idlewood Road, Hardy, Franklin County,
Virginia, United States, 24101**

24 Floor 2 - Living Room



Dimensions: 13'3" x 16'7"
Area: 216 sq. ft
Counted as Living Area:
Yes

Heated: Yes
Finished: Yes
Enclosed: Yes
Contiguous:
Yes
Permitted: Yes
Wet Space: No
Addition: No
Conversion: No