

284 Abercorn Drive, Triana, Madison, Madison County, Alabama, United States, 35756

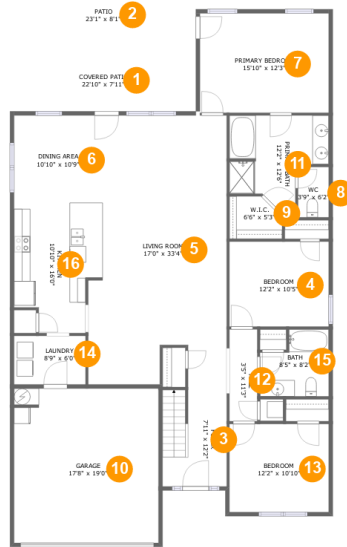


Property Summary

1 garages **4** bedrooms **3** bathrooms **0** half baths

2 floors **2,376** Gross Living Area sqft **3,101** total sqft

284 Abercorn Drive, Triana, Madison, Madison County, Alabama, United States, 35756



Room Dimensions

Floor 1

Total sqft: 2595

Living area: 1870

#	Room name	Dimensions	Area (sqft)	Counted as Living Area
1	Covered Patio	22'10" x 7'11"	181 sq. ft	No
2	Patio	23'1" x 8'1"	185 sq. ft	No
3	Foyer	7'11" x 12'2"	94 sq. ft	Yes
4	Bedroom	12'2" x 10'5"	127 sq. ft	Yes
5	Living Room	17'0" x 33'4"	511 sq. ft	Yes
6	Dining Area	10'10" x 10'9"	117 sq. ft	Yes
7	Primary Bedroom	15'10" x 12'3"	193 sq. ft	Yes
8	Wc	3'9" x 6'2"	23 sq. ft	Yes
9	W.i.c.	6'6" x 5'3"	30 sq. ft	Yes
10	Garage	17'8" x 19'0"	336 sq. ft	No
11	Primary Bath	12'2" x 12'6"	109 sq. ft	Yes

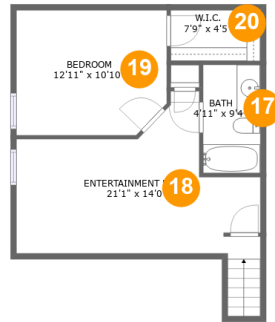
Scan captured on Mon, 15 Jul 2024 19:54:45 GMT

Information is calculated by CubiCasa technology; deemed highly reliable but not guaranteed.

**284 Abercorn Drive, Triana, Madison, Madison
County, Alabama, United States, 35756**

#	Room name	Dimensions	Area (sqft)	Counted as Living Area
12	Hall	3'5" x 11'3"	39 sq. ft	Yes
13	Bedroom	12'2" x 10'10"	132 sq. ft	Yes
14	Laundry	8'9" x 6'0"	52 sq. ft	Yes
15	Bath	8'5" x 8'2"	59 sq. ft	Yes
16	Kitchen	10'10" x 16'0"	150 sq. ft	Yes

284 Abercorn Drive, Triana, Madison, Madison County, Alabama, United States, 35756



Room Dimensions

Floor 2**Total sqft: 506****Living area: 506**

#	Room name	Dimensions	Area (sqft)	Counted as Living Area
17	Bath	4'11" x 9'4"	46 sq. ft	Yes
18	Entertainment Room	21'1" x 14'0"	199 sq. ft	Yes
19	Bedroom	12'11" x 10'10"	136 sq. ft	Yes
20	W.i.c.	7'9" x 4'5"	34 sq. ft	Yes

284 Abercorn Drive, Triana, Madison, Madison County, Alabama, United States, 35756

1 Floor 1 - Covered Patio



Dimensions: 22'10" x 7'11"
Area: 181 sq. ft
Counted as Living Area: No

Heated: No
Finished: Yes
Enclosed: No
Contiguous: Yes
Permitted: Yes
Wet Space: No
Addition: No
Conversion: No

2 Floor 1 - Patio



Dimensions: 23'1" x 8'1"
Area: 185 sq. ft
Counted as Living Area: No

Heated: No
Finished: Yes
Enclosed: No
Contiguous: Yes
Permitted: Yes
Wet Space: No
Addition: No
Conversion: No

284 Abercorn Drive, Triana, Madison, Madison County, Alabama, United States, 35756

3 Floor 1 - Foyer



Dimensions: 7'11" x 12'2"
Area: 94 sq. ft
Counted as Living Area:
Yes

Heated: Yes
Finished: Yes
Enclosed: Yes
Contiguous:
Yes
Permitted: Yes
Wet Space: No
Addition: No
Conversion: No

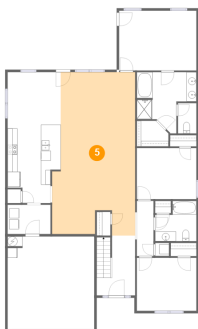
4 Floor 1 - Bedroom



Dimensions: 12'2" x 10'5"
Area: 127 sq. ft
Counted as Living Area:
Yes

Heated: Yes
Finished: Yes
Enclosed: Yes
Contiguous:
Yes
Permitted: Yes
Wet Space: No
Addition: No
Conversion: No

5 Floor 1 - Living Room



Dimensions: 17'0" x 33'4"
Area: 511 sq. ft
Counted as Living Area:
Yes

Heated: Yes
Finished: Yes
Enclosed: Yes
Contiguous:
Yes
Permitted: Yes
Wet Space: No
Addition: No
Conversion: No

284 Abercorn Drive, Triana, Madison, Madison County, Alabama, United States, 35756

6 Floor 1 - Dining Area



Dimensions: 10'10" x 10'9"
Area: 117 sq. ft
Counted as Living Area:
Yes

Heated: Yes
Finished: Yes
Enclosed: Yes
Contiguous:
Yes
Permitted: Yes
Wet Space: No
Addition: No
Conversion: No

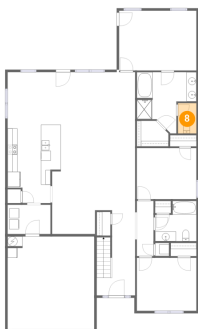
7 Floor 1 - Primary Bedroom



Dimensions: 15'10" x 12'3"
Area: 193 sq. ft
Counted as Living Area:
Yes

Heated: Yes
Finished: Yes
Enclosed: Yes
Contiguous:
Yes
Permitted: Yes
Wet Space: No
Addition: No
Conversion: No

8 Floor 1 - Wc



Dimensions: 3'9" x 6'2"
Area: 23 sq. ft
Counted as Living Area:
Yes

Heated: Yes
Finished: Yes
Enclosed: Yes
Contiguous:
Yes
Permitted: Yes
Wet Space: Yes
Addition: No
Conversion: No

284 Abercorn Drive, Triana, Madison, Madison County, Alabama, United States, 35756

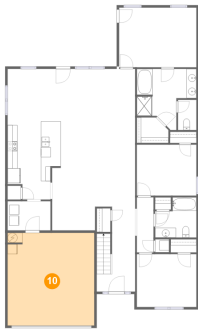
9 Floor 1 - W.i.c.



Dimensions: 6'6" x 5'3"
Area: 30 sq. ft
Counted as Living Area:
Yes

Heated: Yes
Finished: Yes
Enclosed: Yes
Contiguous:
Yes
Permitted: Yes
Wet Space: No
Addition: No
Conversion: No

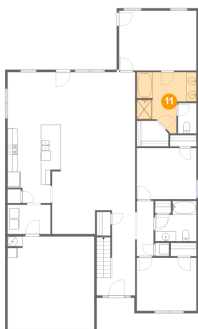
10 Floor 1 - Garage



Dimensions: 17'8" x 19'0"
Area: 336 sq. ft
Counted as Living Area: No

Heated: No
Finished: No
Enclosed: Yes
Contiguous: Yes
Permitted: Yes
Wet Space: No
Addition: No
Conversion: No

11 Floor 1 - Primary Bath



Dimensions: 12'2" x 12'6"
Area: 109 sq. ft
Counted as Living Area:
Yes

Heated: Yes
Finished: Yes
Enclosed: Yes
Contiguous:
Yes
Permitted: Yes
Wet Space: Yes
Addition: No
Conversion: No

284 Abercorn Drive, Triana, Madison, Madison County, Alabama, United States, 35756

12 Floor 1 - Hall



Dimensions: 3'5" x 11'3"
Area: 39 sq. ft
Counted as Living Area:
Yes

Heated: Yes
Finished: Yes
Enclosed: Yes
Contiguous:
Yes
Permitted: Yes
Wet Space: No
Addition: No
Conversion: No

13 Floor 1 - Bedroom



Dimensions: 12'2" x 10'10"
Area: 132 sq. ft
Counted as Living Area:
Yes

Heated: Yes
Finished: Yes
Enclosed: Yes
Contiguous:
Yes
Permitted: Yes
Wet Space: No
Addition: No
Conversion: No

14 Floor 1 - Laundry

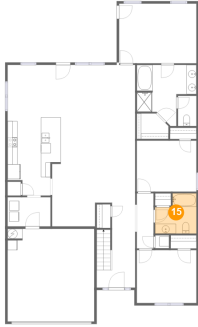


Dimensions: 8'9" x 6'0"
Area: 52 sq. ft
Counted as Living Area:
Yes

Heated: Yes
Finished: Yes
Enclosed: Yes
Contiguous:
Yes
Permitted: Yes
Wet Space: No
Addition: No
Conversion: No

284 Abercorn Drive, Triana, Madison, Madison County, Alabama, United States, 35756

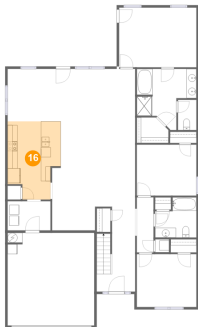
15 Floor 1 - Bath



Dimensions: 8'5" x 8'2"
Area: 59 sq. ft
Counted as Living Area:
Yes

Heated: Yes
Finished: Yes
Enclosed: Yes
Contiguous:
Yes
Permitted: Yes
Wet Space: Yes
Addition: No
Conversion: No

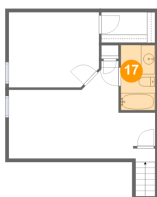
16 Floor 1 - Kitchen



Dimensions: 10'10" x 16'0"
Area: 150 sq. ft
Counted as Living Area:
Yes

Heated: Yes
Finished: Yes
Enclosed: Yes
Contiguous:
Yes
Permitted: Yes
Wet Space: No
Addition: No
Conversion: No

17 Floor 2 - Bath

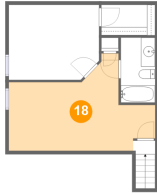


Dimensions: 4'11" x 9'4"
Area: 46 sq. ft
Counted as Living Area:
Yes

Heated: Yes
Finished: Yes
Enclosed: Yes
Contiguous:
Yes
Permitted: Yes
Wet Space: Yes
Addition: No
Conversion: No

284 Abercorn Drive, Triana, Madison, Madison County, Alabama, United States, 35756

18 Floor 2 - Entertainment Room



Dimensions: 21'1" x 14'0"
Area: 199 sq. ft
Counted as Living Area:
Yes

Heated: Yes
Finished: Yes
Enclosed: Yes
Contiguous:
Yes
Permitted: Yes
Wet Space: No
Addition: No
Conversion: No

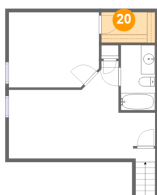
19 Floor 2 - Bedroom



Dimensions: 12'11" x 10'10"
Area: 136 sq. ft
Counted as Living Area:
Yes

Heated: Yes
Finished: Yes
Enclosed: Yes
Contiguous:
Yes
Permitted: Yes
Wet Space: No
Addition: No
Conversion: No

20 Floor 2 - W.i.c.



Dimensions: 7'9" x 4'5"
Area: 34 sq. ft
Counted as Living Area:
Yes

Heated: Yes
Finished: Yes
Enclosed: Yes
Contiguous:
Yes
Permitted: Yes
Wet Space: No
Addition: No
Conversion: No