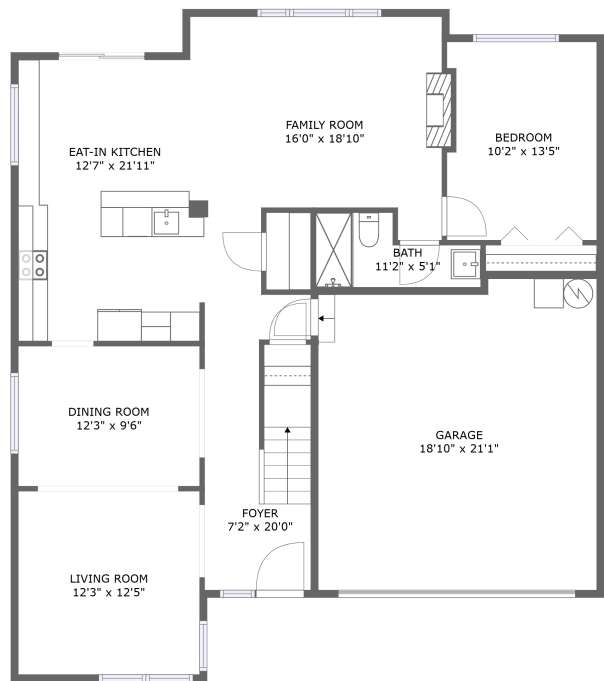
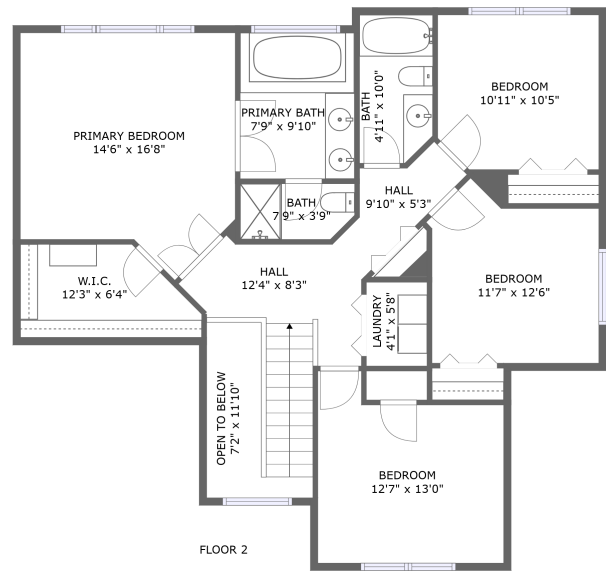


Home report

5836 Northeast Farnham Street, Hillsboro, Washington County,
Oregon, United States, 97124





FLOOR 1





FLOOR 2


Property summary


 **1** Garages


 **5** Bedrooms

 **3** Bathrooms

 **0** Half baths

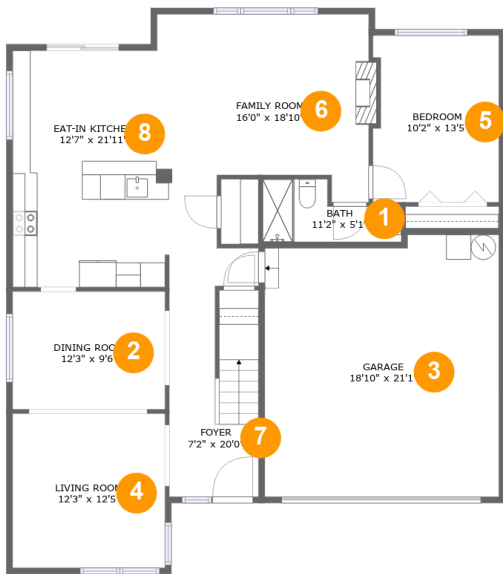
 **2** Floors

 **2,344** Gross living area sqft

 **2,806** Total sqft

Home report

5836 Northeast Farnham Street, Hillsboro, Washington County,
Oregon, United States, 97124



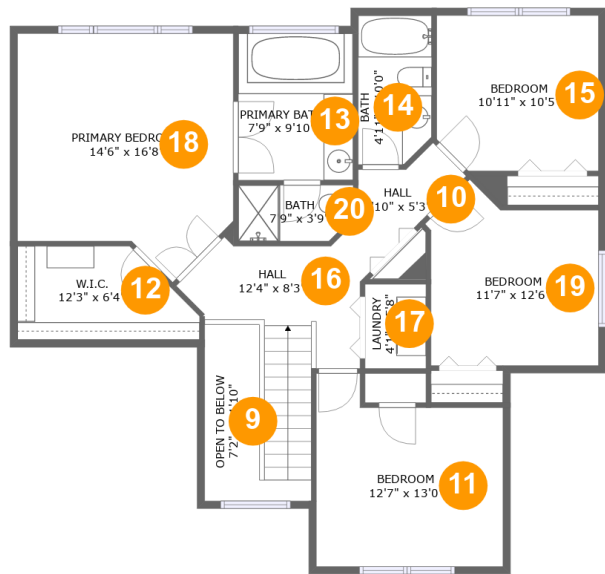
Room dimensions

Floor 1 Total sqft: 1619 Living area: 1215

#		Max Dimensions	sqft	Included
1	Bath	11'2" x 5'1"	43 sq. ft	Yes
2	Dining Room	12'3" x 9'6"	116 sq. ft	Yes
3	Garage	18'10" x 21'1"	384 sq. ft	No
4	Living Room	12'3" x 12'5"	152 sq. ft	Yes
5	Bedroom	10'2" x 13'5"	132 sq. ft	Yes
6	Family Room	16'0" x 18'10"	240 sq. ft	Yes
7	Foyer	7'2" x 20'0"	140 sq. ft	Yes
8	Eat-in Kitchen	12'7" x 21'11"	242 sq. ft	Yes

Home report

5836 Northeast Farnham Street, Hillsboro, Washington County,
Oregon, United States, 97124



Room dimensions

Floor 2 Total sqft: 1187 Living area: 1129

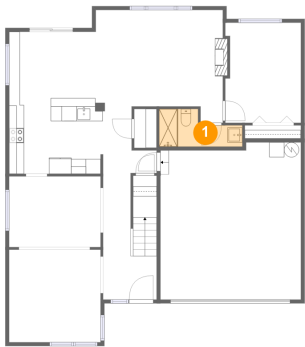
#		Max Dimensions	sqft	Included
9	Open To Below	7'2" x 11'10"	49 sq. ft	No
10	Hall	9'10" x 5'3"	36 sq. ft	Yes
11	Bedroom	12'7" x 13'0"	141 sq. ft	Yes
12	W.I.C.	12'3" x 6'4"	66 sq. ft	Yes
13	Primary Bath	7'9" x 9'10"	76 sq. ft	Yes
14	Bath	4'11" x 10'0"	48 sq. ft	Yes
15	Bedroom	10'11" x 10'5"	112 sq. ft	Yes
16	Hall	12'4" x 8'3"	103 sq. ft	Yes
17	Laundry	4'1" x 5'8"	23 sq. ft	Yes
18	Primary Bedroom	14'6" x 16'8"	210 sq. ft	Yes
19	Bedroom	11'7" x 12'6"	122 sq. ft	Yes

Home report

5836 Northeast Farnham Street, Hillsboro, Washington County,
Oregon, United States, 97124

#		Max Dimensions	sqft	Included
20	Bath	7'9" x 3'9"	28 sq. ft	Yes

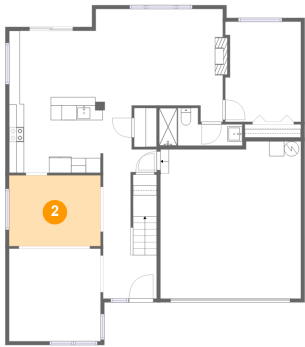
1 Floor 1 - Bath



Max Dimensions: 11'2" x 5'1"
Calculated Area: 43 sq. ft
Included: Yes

Heated: Yes
Finished: Yes
Enclosed: Yes
Contiguous: Yes
Permitted: Yes
Wet space: Yes
Addition: No
Conversion: No

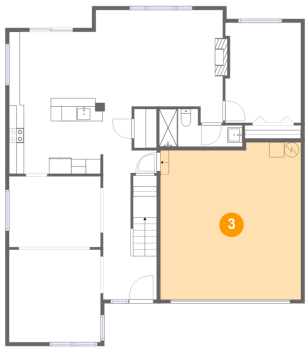
2 Floor 1 - Dining Room



Max Dimensions: 12'3" x 9'6"
Calculated Area: 116 sq. ft
Included: Yes

Heated: Yes
Finished: Yes
Enclosed: Yes
Contiguous: Yes
Permitted: Yes
Wet space: No
Addition: No
Conversion: No

3 Floor 1 - Garage



Max Dimensions: 18'10" x 21'1"
Calculated Area: 384 sq. ft
Included: No

Heated: No
Finished: No
Enclosed: Yes
Contiguous: Yes
Permitted: Yes
Wet space: No
Addition: No
Conversion: No

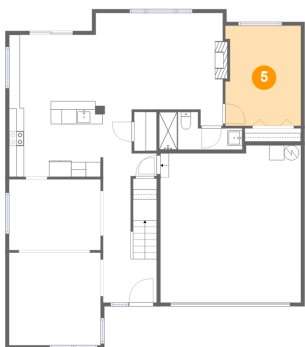
4 Floor 1 - Living Room



Max Dimensions: 12'3" x 12'5"
Calculated Area: 152 sq. ft
Included: Yes

Heated: Yes
Finished: Yes
Enclosed: Yes
Contiguous: Yes
Permitted: Yes
Wet space: No
Addition: No
Conversion: No

5 Floor 1 - Bedroom

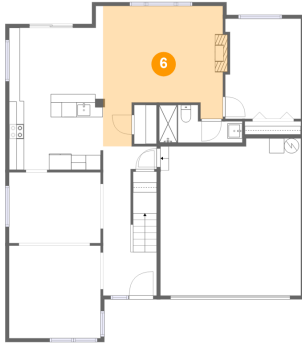


Max Dimensions: 10'2" x 13'5"
Calculated Area: 132 sq. ft
Included: Yes

Heated: Yes
Finished: Yes
Enclosed: Yes
Contiguous: Yes
Permitted: Yes
Wet space: No
Addition: No
Conversion: No

5836 Northeast Farnham Street, Hillsboro, Washington County,
Oregon, United States, 97124

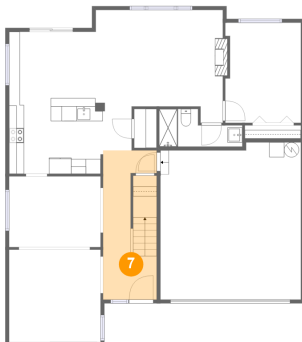
6 Floor 1 - Family Room



Max Dimensions: 16'0" x 18'10"
Calculated Area: 240 sq. ft
Included: Yes

Heated: Yes
Finished: Yes
Enclosed: Yes
Contiguous: Yes
Permitted: Yes
Wet space: No
Addition: No
Conversion: No

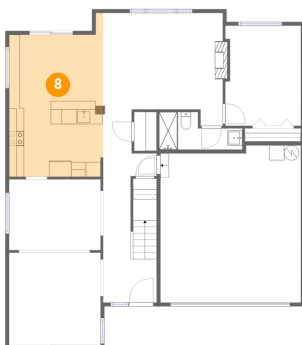
7 Floor 1 - Foyer



Max Dimensions: 7'2" x 20'0"
Calculated Area: 140 sq. ft
Included: Yes

Heated: Yes
Finished: Yes
Enclosed: Yes
Contiguous: Yes
Permitted: Yes
Wet space: No
Addition: No
Conversion: No

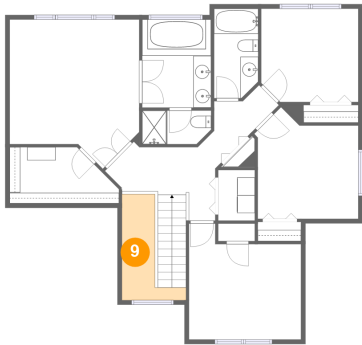
8 Floor 1 - Eat-in Kitchen



Max Dimensions: 12'7" x 21'11"
Calculated Area: 242 sq. ft
Included: Yes

Heated: Yes
Finished: Yes
Enclosed: Yes
Contiguous: Yes
Permitted: Yes
Wet space: No
Addition: No
Conversion: No

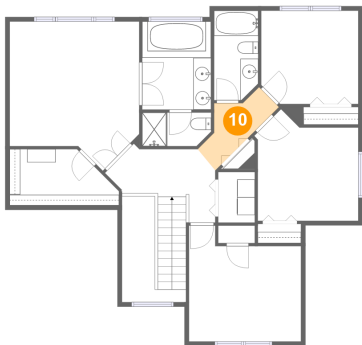
9 Floor 2 - Open To Below



Max Dimensions: 7'2" x 11'10"
Calculated Area: 49 sq. ft
Included: No

Heated: No
Finished: No
Enclosed: No
Contiguous: Yes
Permitted: No
Wet space: No
Addition: No
Conversion: No

10 Floor 2 - Hall



Max Dimensions: 9'10" x 5'3"
Calculated Area: 36 sq. ft
Included: Yes

Heated: Yes
Finished: Yes
Enclosed: Yes
Contiguous: Yes
Permitted: Yes
Wet space: No
Addition: No
Conversion: No

11 Floor 2 - Bedroom

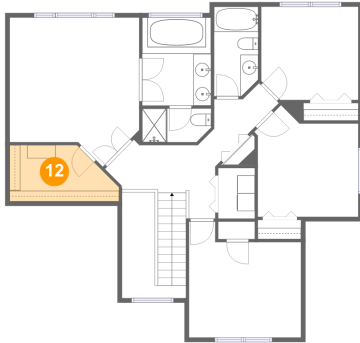


Max Dimensions: 12'7" x 13'0"
Calculated Area: 141 sq. ft
Included: Yes

Heated: Yes
Finished: Yes
Enclosed: Yes
Contiguous: Yes
Permitted: Yes
Wet space: No
Addition: No
Conversion: No

5836 Northeast Farnham Street, Hillsboro, Washington County,
Oregon, United States, 97124

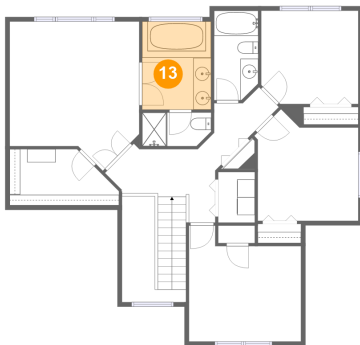
12 Floor 2 - W.I.C.



Max Dimensions: 12'3" x 6'4"
Calculated Area: 66 sq. ft
Included: Yes

Heated: Yes
Finished: Yes
Enclosed: Yes
Contiguous: Yes
Permitted: Yes
Wet space: No
Addition: No
Conversion: No

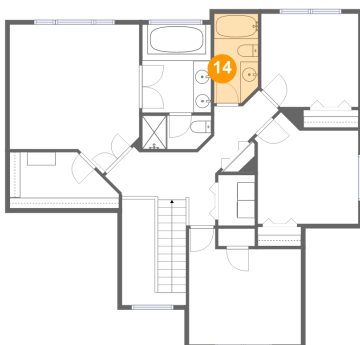
13 Floor 2 - Primary Bath



Max Dimensions: 7'9" x 9'10"
Calculated Area: 76 sq. ft
Included: Yes

Heated: Yes
Finished: Yes
Enclosed: Yes
Contiguous: Yes
Permitted: Yes
Wet space: Yes
Addition: No
Conversion: No

14 Floor 2 - Bath



Max Dimensions: 4'11" x 10'0"
Calculated Area: 48 sq. ft
Included: Yes

Heated: Yes
Finished: Yes
Enclosed: Yes
Contiguous: Yes
Permitted: Yes
Wet space: Yes
Addition: No
Conversion: No

5836 Northeast Farnham Street, Hillsboro, Washington County,
Oregon, United States, 97124

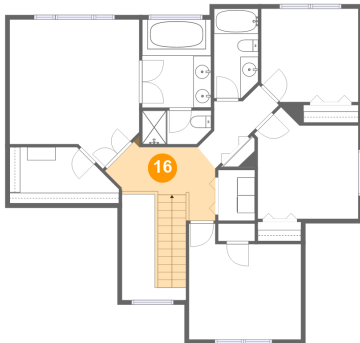
15 Floor 2 - Bedroom



Max Dimensions: 10'11" x 10'5"
Calculated Area: 112 sq. ft
Included: Yes

Heated: Yes
Finished: Yes
Enclosed: Yes
Contiguous: Yes
Permitted: Yes
Wet space: No
Addition: No
Conversion: No

16 Floor 2 - Hall



Max Dimensions: 12'4" x 8'3"
Calculated Area: 103 sq. ft
Included: Yes

Heated: Yes
Finished: Yes
Enclosed: Yes
Contiguous: Yes
Permitted: Yes
Wet space: No
Addition: No
Conversion: No

17 Floor 2 - Laundry

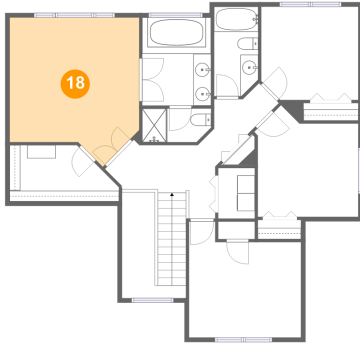


Max Dimensions: 4'1" x 5'8"
Calculated Area: 23 sq. ft
Included: Yes

Heated: Yes
Finished: Yes
Enclosed: Yes
Contiguous: Yes
Permitted: Yes
Wet space: No
Addition: No
Conversion: No

5836 Northeast Farnham Street, Hillsboro, Washington County,
Oregon, United States, 97124

18 Floor 2 - Primary Bedroom



Max Dimensions: 14'6" x 16'8"
Calculated Area: 210 sq. ft
Included: Yes

Heated: Yes
Finished: Yes
Enclosed: Yes
Contiguous: Yes
Permitted: Yes
Wet space: No
Addition: No
Conversion: No

19 Floor 2 - Bedroom



Max Dimensions: 11'7" x 12'6"
Calculated Area: 122 sq. ft
Included: Yes

Heated: Yes
Finished: Yes
Enclosed: Yes
Contiguous: Yes
Permitted: Yes
Wet space: No
Addition: No
Conversion: No

20 Floor 2 - Bath



Max Dimensions: 7'9" x 3'9"
Calculated Area: 28 sq. ft
Included: Yes

Heated: Yes
Finished: Yes
Enclosed: Yes
Contiguous: Yes
Permitted: Yes
Wet space: Yes
Addition: No
Conversion: No