

Home report

869 Norton Avenue, Whitehaven, Queensway Terrace North,  
Ottawa, Ontario, Canada, K2B 5P7




Total Area: 1718 sq. ft

Below Ground: 662 sq. ft, Floor 2: 745 sq. ft, Floor 3: 973 sq. ft

Excluded: Utility 68 sq. ft, Walls: 208 sq. ft

Property summary

 **3** Floors

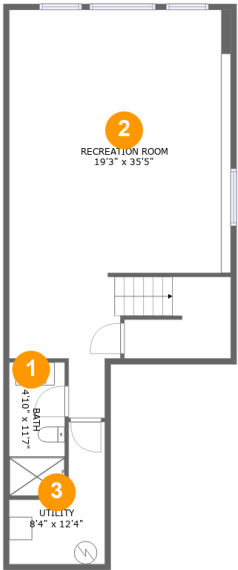
 **3** Bedrooms

 **3** Bathrooms

 **1** Half baths

Home report

869 Norton Avenue, Whitehaven, Queensway Terrace North,  
Ottawa, Ontario, Canada, K2B 5P7



Room dimensions

Floor 1 Below ground Total:662sqft    Excluded: 68sqft

#		Max Dimensions	sqft	Included
1	Bath	4'10" x 11'7"	56 sq. ft	Yes
2	Recreation Room	19'3" x 35'5"	591 sq. ft	Yes
3	Utility	8'4" x 12'4"	68 sq. ft	No

Home report

869 Norton Avenue, Whitehaven, Queensway Terrace North,  
Ottawa, Ontario, Canada, K2B 5P7



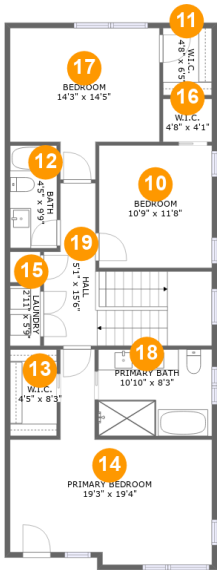
Room dimensions

Floor 2 Total:745sqft   Excluded: 0sqft

#		Max Dimensions	sqft	Included
4	Foyer	8'4" x 19'8"	112 sq. ft	Yes
5	Kitchen	9'1" x 19'7"	178 sq. ft	Yes
6	Dining Area	10'2" x 12'2"	198 sq. ft	Yes
7	WC	3'3" x 7'9"	26 sq. ft	Yes
8	W.I.C.	3'3" x 5'3"	17 sq. ft	Yes
9	Living Room	19'3" x 10'8"	204 sq. ft	Yes

Home report

869 Norton Avenue, Whitehaven, Queensway Terrace North,  
Ottawa, Ontario, Canada, K2B 5P7



Room dimensions

Floor 3 Total:973sqft   Excluded: 0sqft

#		Max Dimensions	sqft	Included
10	Bedroom	10'9" x 11'8"	125 sq. ft	Yes
11	W.I.C.	4'8" x 6'5"	30 sq. ft	Yes
12	Bath	4'5" x 9'9"	44 sq. ft	Yes
13	W.I.C.	4'5" x 8'3"	37 sq. ft	Yes
14	Primary Bedroom	19'3" x 19'4"	247 sq. ft	Yes
15	Laundry	2'11" x 5'9"	16 sq. ft	Yes
16	W.I.C.	4'8" x 4'1"	19 sq. ft	Yes
17	Bedroom	14'3" x 14'5"	166 sq. ft	Yes
18	Primary Bath	10'10" x 8'3"	89 sq. ft	Yes
19	Hall	5'1" x 15'6"	145 sq. ft	Yes

869 Norton Avenue, Whitehaven, Queensway Terrace North,  
Ottawa, Ontario, Canada, K2B 5P7

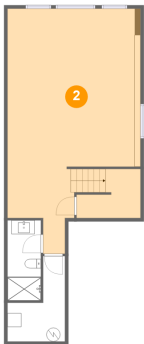
**1 Floor 1 - Bath**



Max Dimensions: 4'10" x 11'7"  
Calculated Area: 56 sq. ft  
Included: Yes

Heated: Yes  
Finished: Yes  
Enclosed: Yes  
Contiguous: Yes  
Permitted: Yes  
Wet space: Yes  
Addition: No  
Conversion: No

**2 Floor 1 - Recreation Room**



Max Dimensions: 19'3" x 35'5"  
Calculated Area: 591 sq. ft  
Included: Yes

Heated: Yes  
Finished: Yes  
Enclosed: Yes  
Contiguous: Yes  
Permitted: Yes  
Wet space: No  
Addition: No  
Conversion: No

869 Norton Avenue, Whitehaven, Queensway Terrace North,  
Ottawa, Ontario, Canada, K2B 5P7

3 Floor 1 - Utility



Max Dimensions: 8'4" x 12'4"  
Calculated Area: 68 sq. ft  
Included: No

Heated: Yes  
Finished: No  
Enclosed: Yes  
Contiguous: Yes  
Permitted: Yes  
Wet space: No  
Addition: No  
Conversion: No

4 Floor 2 - Foyer



Max Dimensions: 8'4" x 19'8"  
Calculated Area: 112 sq. ft  
Included: Yes

Heated: Yes  
Finished: Yes  
Enclosed: Yes  
Contiguous: Yes  
Permitted: Yes  
Wet space: No  
Addition: No  
Conversion: No

5 Floor 2 - Kitchen



Max Dimensions: 9'1" x 19'7"  
Calculated Area: 178 sq. ft  
Included: Yes

Heated: Yes  
Finished: Yes  
Enclosed: Yes  
Contiguous: Yes  
Permitted: Yes  
Wet space: No  
Addition: No  
Conversion: No

869 Norton Avenue, Whitehaven, Queensway Terrace North,  
Ottawa, Ontario, Canada, K2B 5P7

6 Floor 2 - Dining Area



Max Dimensions: 10'2" x 12'2"  
Calculated Area: 198 sq. ft  
Included: Yes

Heated: Yes  
Finished: Yes  
Enclosed: Yes  
Contiguous: Yes  
Permitted: Yes  
Wet space: No  
Addition: No  
Conversion: No

7 Floor 2 - WC



Max Dimensions: 3'3" x 7'9"  
Calculated Area: 26 sq. ft  
Included: Yes

Heated: Yes  
Finished: Yes  
Enclosed: Yes  
Contiguous: Yes  
Permitted: Yes  
Wet space: Yes  
Addition: No  
Conversion: No

8 Floor 2 - W.I.C.



Max Dimensions: 3'3" x 5'3"  
Calculated Area: 17 sq. ft  
Included: Yes

Heated: Yes  
Finished: Yes  
Enclosed: Yes  
Contiguous: Yes  
Permitted: Yes  
Wet space: No  
Addition: No  
Conversion: No

869 Norton Avenue, Whitehaven, Queensway Terrace North,  
Ottawa, Ontario, Canada, K2B 5P7

9 Floor 2 - Living Room



Max Dimensions: 19'3" x 10'8"  
Calculated Area: 204 sq. ft  
Included: Yes

Heated: Yes  
Finished: Yes  
Enclosed: Yes  
Contiguous: Yes  
Permitted: Yes  
Wet space: No  
Addition: No  
Conversion: No

10 Floor 3 - Bedroom



Max Dimensions: 10'9" x 11'8"  
Calculated Area: 125 sq. ft  
Included: Yes

Heated: Yes  
Finished: Yes  
Enclosed: Yes  
Contiguous: Yes  
Permitted: Yes  
Wet space: No  
Addition: No  
Conversion: No

11 Floor 3 - W.I.C.



Max Dimensions: 4'8" x 6'5"  
Calculated Area: 30 sq. ft  
Included: Yes

Heated: Yes  
Finished: Yes  
Enclosed: Yes  
Contiguous: Yes  
Permitted: Yes  
Wet space: No  
Addition: No  
Conversion: No



869 Norton Avenue, Whitehaven, Queensway Terrace North,  
Ottawa, Ontario, Canada, K2B 5P7

12 Floor 3 - Bath



Max Dimensions: 4'5" x 9'9"  
Calculated Area: 44 sq. ft  
Included: Yes

Heated: Yes  
Finished: Yes  
Enclosed: Yes  
Contiguous: Yes  
Permitted: Yes  
Wet space: Yes  
Addition: No  
Conversion: No

13 Floor 3 - W.I.C.



Max Dimensions: 4'5" x 8'3"  
Calculated Area: 37 sq. ft  
Included: Yes

Heated: Yes  
Finished: Yes  
Enclosed: Yes  
Contiguous: Yes  
Permitted: Yes  
Wet space: No  
Addition: No  
Conversion: No

14 Floor 3 - Primary Bedroom



Max Dimensions: 19'3" x 19'4"  
Calculated Area: 247 sq. ft  
Included: Yes

Heated: Yes  
Finished: Yes  
Enclosed: Yes  
Contiguous: Yes  
Permitted: Yes  
Wet space: No  
Addition: No  
Conversion: No

869 Norton Avenue, Whitehaven, Queensway Terrace North,  
Ottawa, Ontario, Canada, K2B 5P7

15 Floor 3 - Laundry



Max Dimensions: 2'11" x 5'9"  
Calculated Area: 16 sq. ft  
Included: Yes

Heated: Yes  
Finished: Yes  
Enclosed: Yes  
Contiguous: Yes  
Permitted: Yes  
Wet space: No  
Addition: No  
Conversion: No

16 Floor 3 - W.I.C.



Max Dimensions: 4'8" x 4'1"  
Calculated Area: 19 sq. ft  
Included: Yes

Heated: Yes  
Finished: Yes  
Enclosed: Yes  
Contiguous: Yes  
Permitted: Yes  
Wet space: No  
Addition: No  
Conversion: No

17 Floor 3 - Bedroom



Max Dimensions: 14'3" x 14'5"  
Calculated Area: 166 sq. ft  
Included: Yes

Heated: Yes  
Finished: Yes  
Enclosed: Yes  
Contiguous: Yes  
Permitted: Yes  
Wet space: No  
Addition: No  
Conversion: No

869 Norton Avenue, Whitehaven, Queensway Terrace North,  
Ottawa, Ontario, Canada, K2B 5P7

18 Floor 3 - Primary Bath



Max Dimensions: 10'10" x 8'3"  
Calculated Area: 89 sq. ft  
Included: Yes

Heated: Yes  
Finished: Yes  
Enclosed: Yes  
Contiguous: Yes  
Permitted: Yes  
Wet space: Yes  
Addition: No  
Conversion: No

19 Floor 3 - Hall



Max Dimensions: 5'1" x 15'6"  
Calculated Area: 145 sq. ft  
Included: Yes

Heated: Yes  
Finished: Yes  
Enclosed: Yes  
Contiguous: Yes  
Permitted: Yes  
Wet space: No  
Addition: No  
Conversion: No