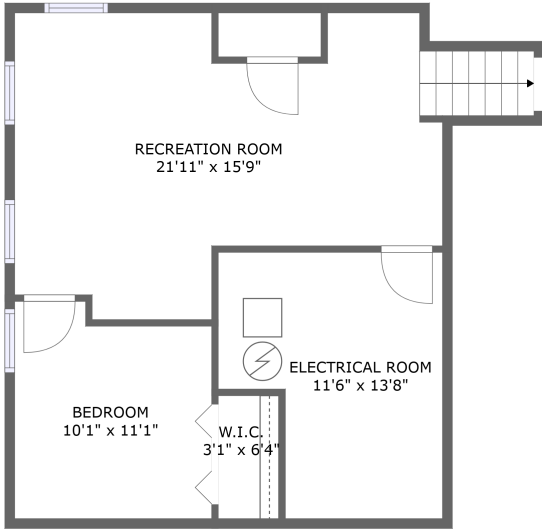
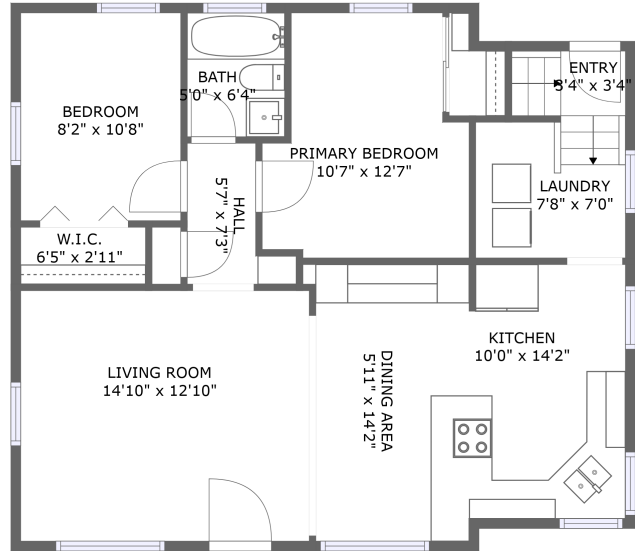


204 Hyde Avenue, Pocatello, Bannock County, Idaho, United States, 83201




FLOOR 1




FLOOR 2

Property summary


 **0** Garages

 **3** Bedrooms

 **1** Bathrooms

 **0** Half baths

 **2** Floors

 **1,364** Gross living area sqft

 **1,509** Total sqft

204 Hyde Avenue, Pocatello, Bannock County, Idaho, United States, 83201



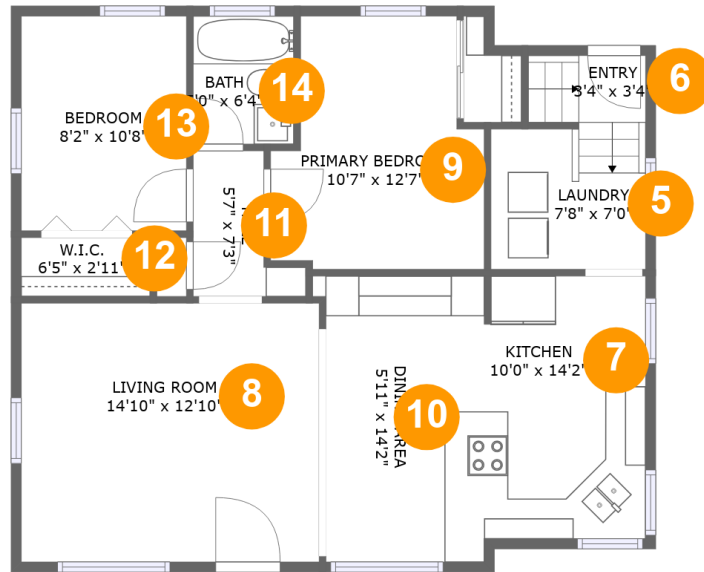
Room dimensions

Floor 1

Total sqft: 635 Living area: 490

#		Dimensions	sqft	Counted as living area
1	W.I.C.	3'1" x 6'4"	20 sq. ft	Yes
2	Recreation Room	21'11" x 15'9"	293 sq. ft	Yes
3	Bedroom	10'1" x 11'1"	104 sq. ft	Yes
4	Electrical Room	11'6" x 13'8"	134 sq. ft	No

204 Hyde Avenue, Pocatello, Bannock County, Idaho, United States, 83201



Room dimensions

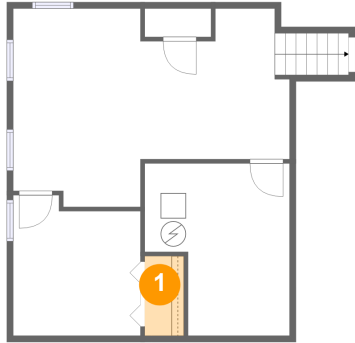
Floor 2

Total sqft: 874 Living area: 874

#		Dimensions	sqft	Counted as living area
5	Laundry	7'8" x 7'0"	55 sq. ft	Yes
6	Entry	3'4" x 3'4"	19 sq. ft	Yes
7	Kitchen	10'0" x 14'2"	131 sq. ft	Yes
8	Living Room	14'10" x 12'10"	190 sq. ft	Yes
9	Primary Bedroom	10'7" x 12'7"	115 sq. ft	Yes
10	Dining Area	5'11" x 14'2"	85 sq. ft	Yes
11	Hall	5'7" x 7'3"	28 sq. ft	Yes
12	W.I.C.	6'5" x 2'11"	19 sq. ft	Yes
13	Bedroom	8'2" x 10'8"	87 sq. ft	Yes
14	Bath	5'0" x 6'4"	32 sq. ft	Yes

204 Hyde Avenue, Pocatello, Bannock County, Idaho, United States, 83201

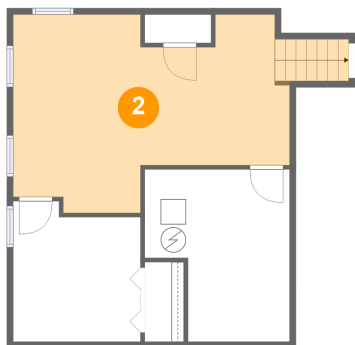
1 Floor 1 - W.I.C.



Dimensions: 3'1" x 6'4"
Area: 20 sq. ft
Counted as living area: Yes

Heated: Yes
Finished: Yes
Enclosed: Yes
Contiguous: Yes
Permitted: Yes
Wet space: No
Addition: No
Conversion: No

2 Floor 1 - Recreation Room



Dimensions: 21'11" x 15'9"
Area: 293 sq. ft
Counted as living area: Yes

Heated: Yes
Finished: Yes
Enclosed: Yes
Contiguous: Yes
Permitted: Yes
Wet space: No
Addition: No
Conversion: No

204 Hyde Avenue, Pocatello, Bannock County, Idaho, United States, 83201

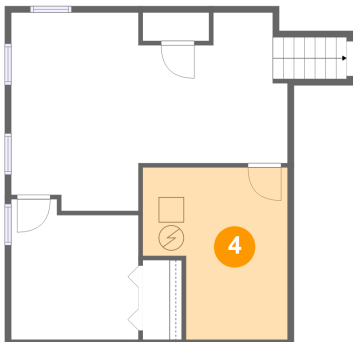
3 Floor 1 - Bedroom



Dimensions: 10'1" x 11'1"
Area: 104 sq. ft
Counted as living area: Yes

Heated: Yes
Finished: Yes
Enclosed: Yes
Contiguous: Yes
Permitted: Yes
Wet space: No
Addition: No
Conversion: No

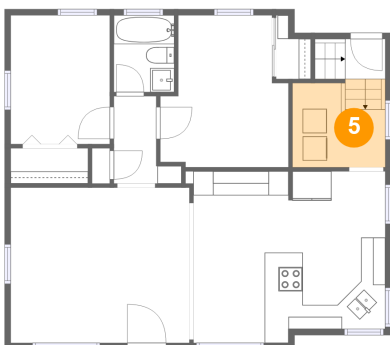
4 Floor 1 - Electrical Room



Dimensions: 11'6" x 13'8"
Area: 134 sq. ft
Counted as living area: No

Heated: No
Finished: No
Enclosed: Yes
Contiguous: Yes
Permitted: Yes
Wet space: No
Addition: No
Conversion: No

5 Floor 2 - Laundry

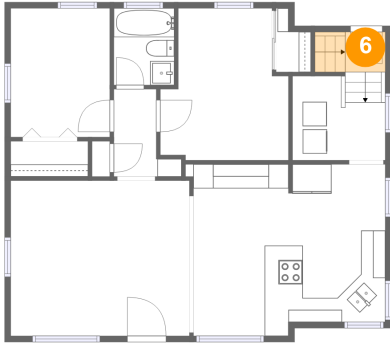


Dimensions: 7'8" x 7'0"
Area: 55 sq. ft
Counted as living area: Yes

Heated: Yes
Finished: Yes
Enclosed: Yes
Contiguous: Yes
Permitted: Yes
Wet space: No
Addition: No
Conversion: No

204 Hyde Avenue, Pocatello, Bannock County, Idaho,
United States, 83201

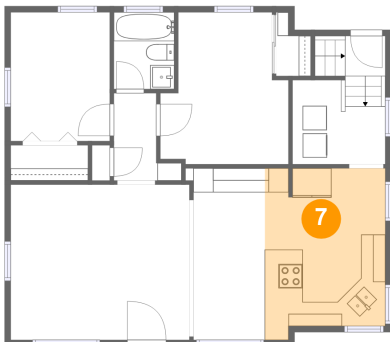
6 Floor 2 - Entry



Dimensions: 3'4" x 3'4"
Area: 19 sq. ft
Counted as living area: Yes

Heated: Yes
Finished: Yes
Enclosed: Yes
Contiguous: Yes
Permitted: Yes
Wet space: No
Addition: No
Conversion: No

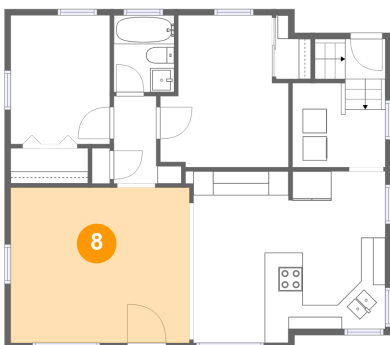
7 Floor 2 - Kitchen



Dimensions: 10'0" x 14'2"
Area: 131 sq. ft
Counted as living area: Yes

Heated: Yes
Finished: Yes
Enclosed: Yes
Contiguous: Yes
Permitted: Yes
Wet space: No
Addition: No
Conversion: No

8 Floor 2 - Living Room

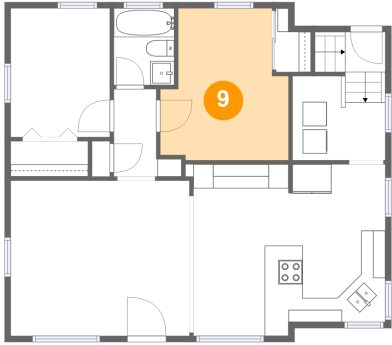


Dimensions: 14'10" x 12'10"
Area: 190 sq. ft
Counted as living area: Yes

Heated: Yes
Finished: Yes
Enclosed: Yes
Contiguous: Yes
Permitted: Yes
Wet space: No
Addition: No
Conversion: No

204 Hyde Avenue, Pocatello, Bannock County, Idaho, United States, 83201

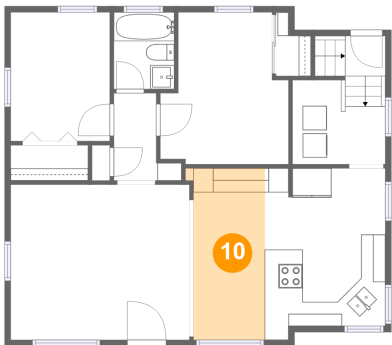
9 Floor 2 - Primary Bedroom



Dimensions: 10'7" x 12'7"
Area: 115 sq. ft
Counted as living area: Yes

Heated: Yes
Finished: Yes
Enclosed: Yes
Contiguous: Yes
Permitted: Yes
Wet space: No
Addition: No
Conversion: No

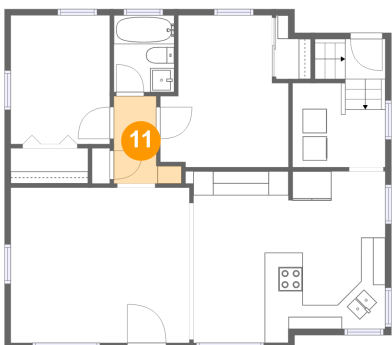
10 Floor 2 - Dining Area



Dimensions: 5'11" x 14'2"
Area: 85 sq. ft
Counted as living area: Yes

Heated: Yes
Finished: Yes
Enclosed: Yes
Contiguous: Yes
Permitted: Yes
Wet space: No
Addition: No
Conversion: No

11 Floor 2 - Hall

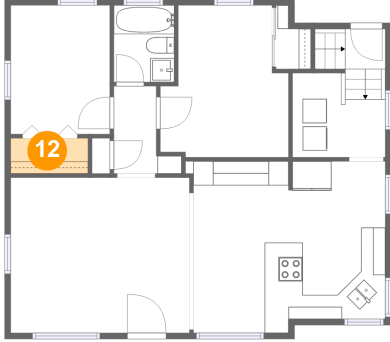


Dimensions: 5'7" x 7'3"
Area: 28 sq. ft
Counted as living area: Yes

Heated: Yes
Finished: Yes
Enclosed: Yes
Contiguous: Yes
Permitted: Yes
Wet space: No
Addition: No
Conversion: No

204 Hyde Avenue, Pocatello, Bannock County, Idaho, United States, 83201

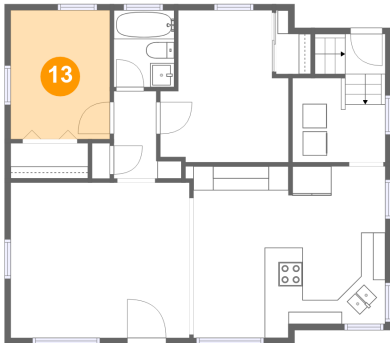
12 Floor 2 - W.I.C.



Dimensions: 6'5" x 2'11"
Area: 19 sq. ft
Counted as living area: Yes

Heated: Yes
Finished: Yes
Enclosed: Yes
Contiguous: Yes
Permitted: Yes
Wet space: No
Addition: No
Conversion: No

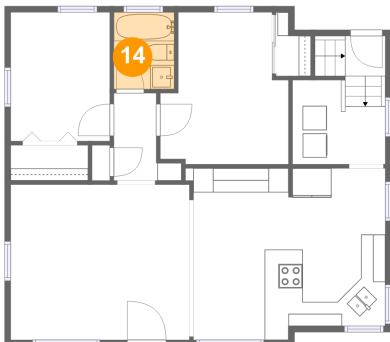
13 Floor 2 - Bedroom



Dimensions: 8'2" x 10'8"
Area: 87 sq. ft
Counted as living area: Yes

Heated: Yes
Finished: Yes
Enclosed: Yes
Contiguous: Yes
Permitted: Yes
Wet space: No
Addition: No
Conversion: No

14 Floor 2 - Bath



Dimensions: 5'0" x 6'4"
Area: 32 sq. ft
Counted as living area: Yes

Heated: Yes
Finished: Yes
Enclosed: Yes
Contiguous: Yes
Permitted: Yes
Wet space: Yes
Addition: No
Conversion: No