


Home report


64 River Street, Beach Park, Plymouth, Plymouth County,  
Massachusetts, United States, 02360




Property summary




0  
Garages



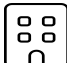
5  
Bedrooms




2  
Bathrooms




1  
Half baths



2  
Floors



2,380  
Gross living  
area sqft



3,111  
Total sqft

64 River Street, Beach Park, Plymouth, Plymouth County,  
Massachusetts, United States, 02360

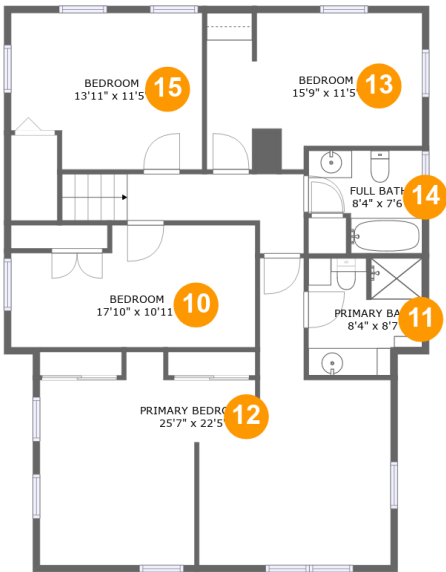


Room dimensions

Floor 1 Total sqft: 1903    Living area: 1172

#		Max Dimensions	sqft	Included
1	Back Deck	8'3" x 8'0"	66 sq. ft	No
2	Entry	6'6" x 14'2"	91 sq. ft	Yes
3	Front Deck	33'0" x 21'9"	516 sq. ft	No
4	Kitchen	15'1" x 17'9"	227 sq. ft	Yes
5	Living Room	19'2" x 14'2"	245 sq. ft	Yes
6	BATH/LAUNDRY Room	11'10" x 6'4"	74 sq. ft	Yes
7	Dining Area	17'10" x 12'8"	215 sq. ft	Yes
8	Side Deck	12'0" x 12'5"	149 sq. ft	No
9	Bedroom	14'7" x 11'11"	171 sq. ft	Yes

64 River Street, Beach Park, Plymouth, Plymouth County,  
Massachusetts, United States, 02360



Room dimensions

Floor 2Total sqft: 1208    Living area: 1208

#		Max Dimensions	sqft	Included
10	Bedroom	17'10" x 10'11"	154 sq. ft	Yes
11	Primary Bath	8'4" x 8'7"	65 sq. ft	Yes
12	Primary Bedroom	25'7" x 22'5"	376 sq. ft	Yes
13	Bedroom	15'9" x 11'5"	157 sq. ft	Yes
14	Full Bath	8'4" x 7'6"	53 sq. ft	Yes
15	Bedroom	13'11" x 11'5"	149 sq. ft	Yes

64 River Street, Beach Park, Plymouth, Plymouth County,  
Massachusetts, United States, 02360

1 Floor 1 - Back Deck



Max Dimensions: 8'3" x 8'0"  
Calculated Area: 66 sq. ft  
Included: No

Heated: No  
Finished: Yes  
Enclosed: No  
Contiguous: No  
Permitted: Yes  
Wet space: No  
Addition: No  
Conversion: No

2 Floor 1 - Entry



Max Dimensions: 6'6" x 14'2"  
Calculated Area: 91 sq. ft  
Included: Yes

Heated: Yes  
Finished: Yes  
Enclosed: Yes  
Contiguous: Yes  
Permitted: Yes  
Wet space: No  
Addition: No  
Conversion: No

64 River Street, Beach Park, Plymouth, Plymouth County,  
Massachusetts, United States, 02360

3 Floor 1 - Front Deck



Max Dimensions: 33'0" x 21'9"  
Calculated Area: 516 sq. ft  
Included: No

Heated: No  
Finished: Yes  
Enclosed: No  
Contiguous: No  
Permitted: Yes  
Wet space: No  
Addition: No  
Conversion: No

4 Floor 1 - Kitchen



Max Dimensions: 15'1" x 17'9"  
Calculated Area: 227 sq. ft  
Included: Yes

Heated: Yes  
Finished: Yes  
Enclosed: Yes  
Contiguous: Yes  
Permitted: Yes  
Wet space: No  
Addition: No  
Conversion: No

5 Floor 1 - Living Room



Max Dimensions: 19'2" x 14'2"  
Calculated Area: 245 sq. ft  
Included: Yes

Heated: Yes  
Finished: Yes  
Enclosed: Yes  
Contiguous: Yes  
Permitted: Yes  
Wet space: No  
Addition: No  
Conversion: No

64 River Street, Beach Park, Plymouth, Plymouth County,  
Massachusetts, United States, 02360

6 Floor 1 - BATH/LAUNDRY Room



Max Dimensions: 11'10" x 6'4"  
Calculated Area: 74 sq. ft  
Included: Yes

Heated: Yes  
Finished: Yes  
Enclosed: Yes  
Contiguous: Yes  
Permitted: Yes  
Wet space: Yes  
Addition: No  
Conversion: No

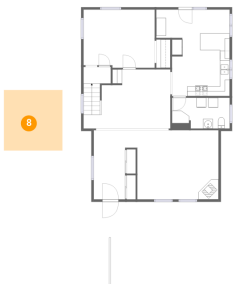
7 Floor 1 - Dining Area



Max Dimensions: 17'10" x 12'8"  
Calculated Area: 215 sq. ft  
Included: Yes

Heated: Yes  
Finished: Yes  
Enclosed: Yes  
Contiguous: Yes  
Permitted: Yes  
Wet space: No  
Addition: No  
Conversion: No

8 Floor 1 - Side Deck



Max Dimensions: 12'0" x 12'5"  
Calculated Area: 149 sq. ft  
Included: No

Heated: No  
Finished: Yes  
Enclosed: No  
Contiguous: Yes  
Permitted: Yes  
Wet space: No  
Addition: No  
Conversion: No

64 River Street, Beach Park, Plymouth, Plymouth County,  
Massachusetts, United States, 02360

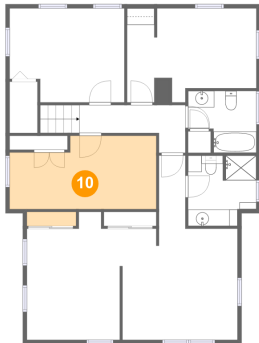
## 9 Floor 1 - Bedroom



Max Dimensions: 14'7" x 11'11"  
Calculated Area: 171 sq. ft  
Included: Yes

Heated: Yes  
Finished: Yes  
Enclosed: Yes  
Contiguous: Yes  
Permitted: Yes  
Wet space: No  
Addition: No  
Conversion: No

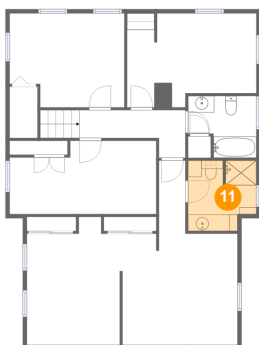
## 10 Floor 2 - Bedroom



Max Dimensions: 17'10" x 10'11"  
Calculated Area: 154 sq. ft  
Included: Yes

Heated: Yes  
Finished: Yes  
Enclosed: Yes  
Contiguous: Yes  
Permitted: Yes  
Wet space: No  
Addition: No  
Conversion: No

## 11 Floor 2 - Primary Bath

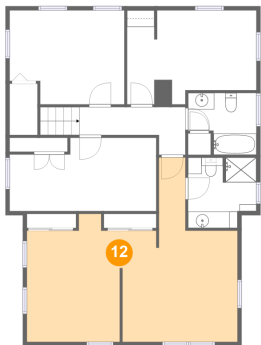


Max Dimensions: 8'4" x 8'7"  
Calculated Area: 65 sq. ft  
Included: Yes

Heated: Yes  
Finished: Yes  
Enclosed: Yes  
Contiguous: Yes  
Permitted: Yes  
Wet space: Yes  
Addition: No  
Conversion: No

64 River Street, Beach Park, Plymouth, Plymouth County,  
Massachusetts, United States, 02360

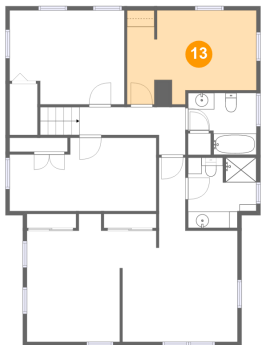
12 Floor 2 - Primary Bedroom



Max Dimensions: 25'7" x 22'5"  
Calculated Area: 376 sq. ft  
Included: Yes

Heated: Yes  
Finished: Yes  
Enclosed: Yes  
Contiguous: Yes  
Permitted: Yes  
Wet space: No  
Addition: No  
Conversion: No

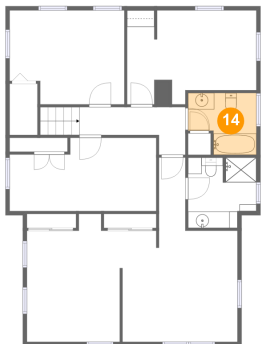
13 Floor 2 - Bedroom



Max Dimensions: 15'9" x 11'5"  
Calculated Area: 157 sq. ft  
Included: Yes

Heated: Yes  
Finished: Yes  
Enclosed: Yes  
Contiguous: Yes  
Permitted: Yes  
Wet space: No  
Addition: No  
Conversion: No

14 Floor 2 - Full Bath



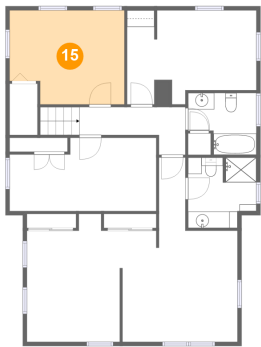
Max Dimensions: 8'4" x 7'6"  
Calculated Area: 53 sq. ft  
Included: Yes

Heated: Yes  
Finished: Yes  
Enclosed: Yes  
Contiguous: Yes  
Permitted: Yes  
Wet space: Yes  
Addition: No  
Conversion: No



64 River Street, Beach Park, Plymouth, Plymouth County,  
Massachusetts, United States, 02360

15 Floor 2 - Bedroom



Max Dimensions: 13'11" x 11'5"  
Calculated Area: 149 sq. ft  
Included: Yes

Heated: Yes  
Finished: Yes  
Enclosed: Yes  
Contiguous: Yes  
Permitted: Yes  
Wet space: No  
Addition: No  
Conversion: No