



Home report


3382 Laurel Circle, Ruxton, Cave Spring, Roanoke, Roanoke County, Virginia, United States, 24018




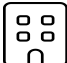
Property summary


**1** Garages


**3** Bedrooms

**3** Bathrooms

**0** Half baths

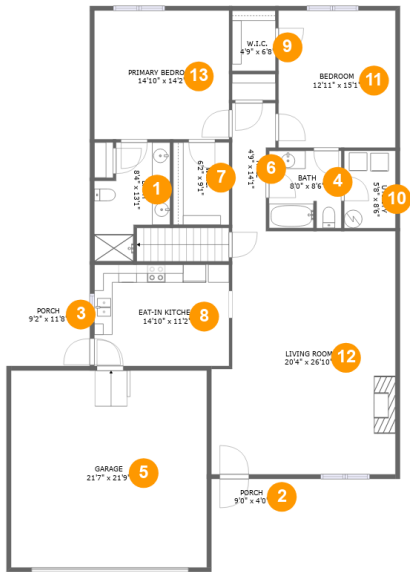
**2** Floors

**2,024** Gross living area sqft

**2,852** Total sqft

Home report

3382 Laurel Circle, Ruxton, Cave Spring, Roanoke, Roanoke County, Virginia, United States, 24018



Room dimensions

Floor 1 Total sqft: 2271 Living area: 1628

#		Dimensions	sqft	Counted as living area
1	Bath	8'4" x 13'1"	83 sq. ft	Yes
2	Porch	9'0" x 4'0"	36 sq. ft	No
3	Porch	9'2" x 11'8"	107 sq. ft	No
4	Bath	8'0" x 8'6"	67 sq. ft	Yes
5	Garage	21'7" x 21'9"	469 sq. ft	No
6	Hall	4'9" x 14'1"	58 sq. ft	Yes
7	W.I.C.	6'2" x 9'1"	56 sq. ft	Yes
8	Eat-in Kitchen	14'10" x 11'2"	166 sq. ft	Yes
9	W.I.C.	4'9" x 6'8"	32 sq. ft	Yes
10	Utility	5'8" x 8'6"	48 sq. ft	Yes
11	Bedroom	12'11" x 15'1"	195 sq. ft	Yes

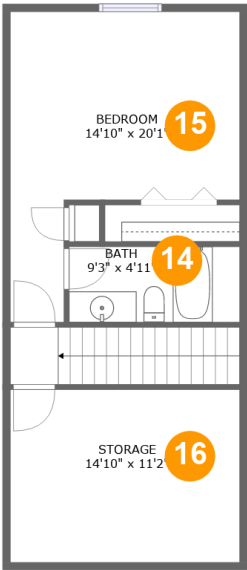
Home report

3382 Laurel Circle, Ruxton, Cave Spring, Roanoke, Roanoke
County, Virginia, United States, 24018

#		Dimensions	sqft	Counted as living area
12	Living Room	20'4" x 26'10"	509 sq. ft	Yes
13	Primary Bedroom	14'10" x 14'2"	211 sq. ft	Yes

Home report

3382 Laurel Circle, Ruxton, Cave Spring, Roanoke, Roanoke County, Virginia, United States, 24018



Room dimensions

Floor 2 Total sqft: 581 Living area: 396

#		Dimensions	sqft	Counted as living area
14	Bath	9'3" x 4'11"	54 sq. ft	Yes
15	Bedroom	14'10" x 20'1"	209 sq. ft	Yes
16	Storage	14'10" x 11'2"	94 sq. ft	No

3382 Laurel Circle, Ruxton, Cave Spring, Roanoke, Roanoke County, Virginia, United States, 24018

1 Floor 1 - Bath



Dimensions: 8'4" x 13'1"
Area: 83 sq. ft
Counted as living area: Yes

Heated: Yes
Finished: Yes
Enclosed: Yes
Contiguous: Yes
Permitted: Yes
Wet space: Yes
Addition: No
Conversion: No

2 Floor 1 - Porch

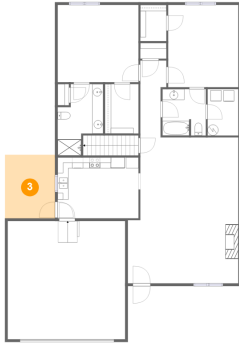


Dimensions: 9'0" x 4'0"
Area: 36 sq. ft
Counted as living area: No

Heated: No
Finished: Yes
Enclosed: No
Contiguous: Yes
Permitted: Yes
Wet space: No
Addition: No
Conversion: No

3382 Laurel Circle, Ruxton, Cave Spring, Roanoke, Roanoke County, Virginia, United States, 24018

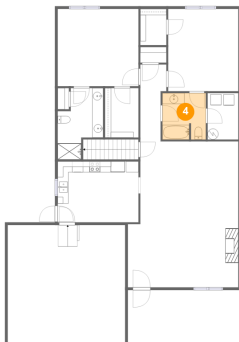
3 Floor 1 - Porch



Dimensions: 9'2" x 11'8"
Area: 107 sq. ft
Counted as living area: No

Heated: No
Finished: Yes
Enclosed: No
Contiguous: Yes
Permitted: Yes
Wet space: No
Addition: No
Conversion: No

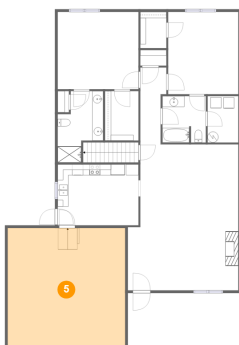
4 Floor 1 - Bath



Dimensions: 8'0" x 8'6"
Area: 67 sq. ft
Counted as living area: Yes

Heated: Yes
Finished: Yes
Enclosed: Yes
Contiguous: Yes
Permitted: Yes
Wet space: Yes
Addition: No
Conversion: No

5 Floor 1 - Garage



Dimensions: 21'7" x 21'9"
Area: 469 sq. ft
Counted as living area: No

Heated: No
Finished: No
Enclosed: Yes
Contiguous: Yes
Permitted: Yes
Wet space: No
Addition: No
Conversion: No

3382 Laurel Circle, Ruxton, Cave Spring, Roanoke, Roanoke County, Virginia, United States, 24018

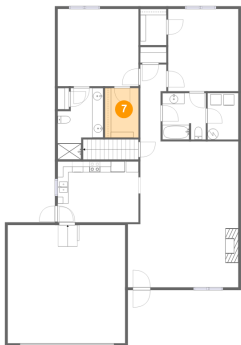
6 Floor 1 - Hall



Dimensions: 4'9" x 14'1"
Area: 58 sq. ft
Counted as living area: Yes

Heated: Yes
Finished: Yes
Enclosed: Yes
Contiguous: Yes
Permitted: Yes
Wet space: No
Addition: No
Conversion: No

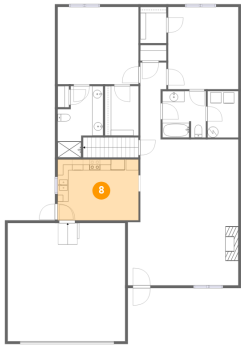
7 Floor 1 - W.I.C.



Dimensions: 6'2" x 9'1"
Area: 56 sq. ft
Counted as living area: Yes

Heated: Yes
Finished: Yes
Enclosed: Yes
Contiguous: Yes
Permitted: Yes
Wet space: No
Addition: No
Conversion: No

8 Floor 1 - Eat-in Kitchen



Dimensions: 14'10" x 11'2"
Area: 166 sq. ft
Counted as living area: Yes

Heated: Yes
Finished: Yes
Enclosed: Yes
Contiguous: Yes
Permitted: Yes
Wet space: No
Addition: No
Conversion: No

3382 Laurel Circle, Ruxton, Cave Spring, Roanoke, Roanoke County, Virginia, United States, 24018

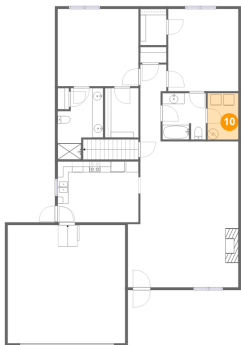
9 Floor 1 - W.I.C.



Dimensions: 4'9" x 6'8"
Area: 32 sq. ft
Counted as living area: Yes

Heated: Yes
Finished: Yes
Enclosed: Yes
Contiguous: Yes
Permitted: Yes
Wet space: No
Addition: No
Conversion: No

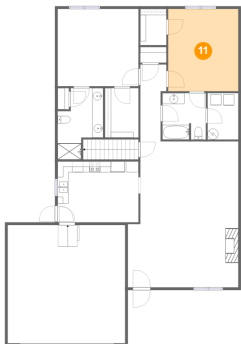
10 Floor 1 - Utility



Dimensions: 5'8" x 8'6"
Area: 48 sq. ft
Counted as living area: Yes

Heated: Yes
Finished: Yes
Enclosed: Yes
Contiguous: Yes
Permitted: Yes
Wet space: No
Addition: No
Conversion: No

11 Floor 1 - Bedroom

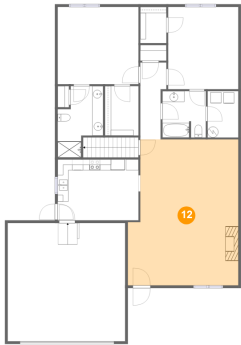


Dimensions: 12'11" x 15'1"
Area: 195 sq. ft
Counted as living area: Yes

Heated: Yes
Finished: Yes
Enclosed: Yes
Contiguous: Yes
Permitted: Yes
Wet space: No
Addition: No
Conversion: No

3382 Laurel Circle, Ruxton, Cave Spring, Roanoke, Roanoke County, Virginia, United States, 24018

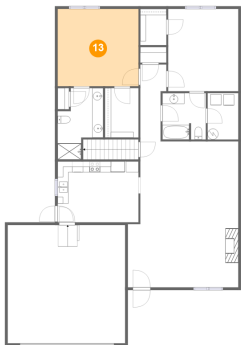
12 Floor 1 - Living Room



Dimensions: 20'4" x 26'10"
Area: 509 sq. ft
Counted as living area: Yes

Heated: Yes
Finished: Yes
Enclosed: Yes
Contiguous: Yes
Permitted: Yes
Wet space: No
Addition: No
Conversion: No

13 Floor 1 - Primary Bedroom



Dimensions: 14'10" x 14'2"
Area: 211 sq. ft
Counted as living area: Yes

Heated: Yes
Finished: Yes
Enclosed: Yes
Contiguous: Yes
Permitted: Yes
Wet space: No
Addition: No
Conversion: No

14 Floor 2 - Bath



Dimensions: 9'3" x 4'11"
Area: 54 sq. ft
Counted as living area: Yes

Heated: Yes
Finished: Yes
Enclosed: Yes
Contiguous: Yes
Permitted: Yes
Wet space: Yes
Addition: No
Conversion: No

3382 Laurel Circle, Ruxton, Cave Spring, Roanoke, Roanoke
County, Virginia, United States, 24018

15 Floor 2 - Bedroom



Dimensions: 14'10" x 20'1"
Area: 209 sq. ft
Counted as living area: Yes

Heated: Yes
Finished: Yes
Enclosed: Yes
Contiguous: Yes
Permitted: Yes
Wet space: No
Addition: No
Conversion: No

16 Floor 2 - Storage



Dimensions: 14'10" x 11'2"
Area: 94 sq. ft
Counted as living area: No

Heated: No
Finished: No
Enclosed: No
Contiguous: No
Permitted: Yes
Wet space: No
Addition: No
Conversion: No