

STORAGE
13'9" x 15'4"

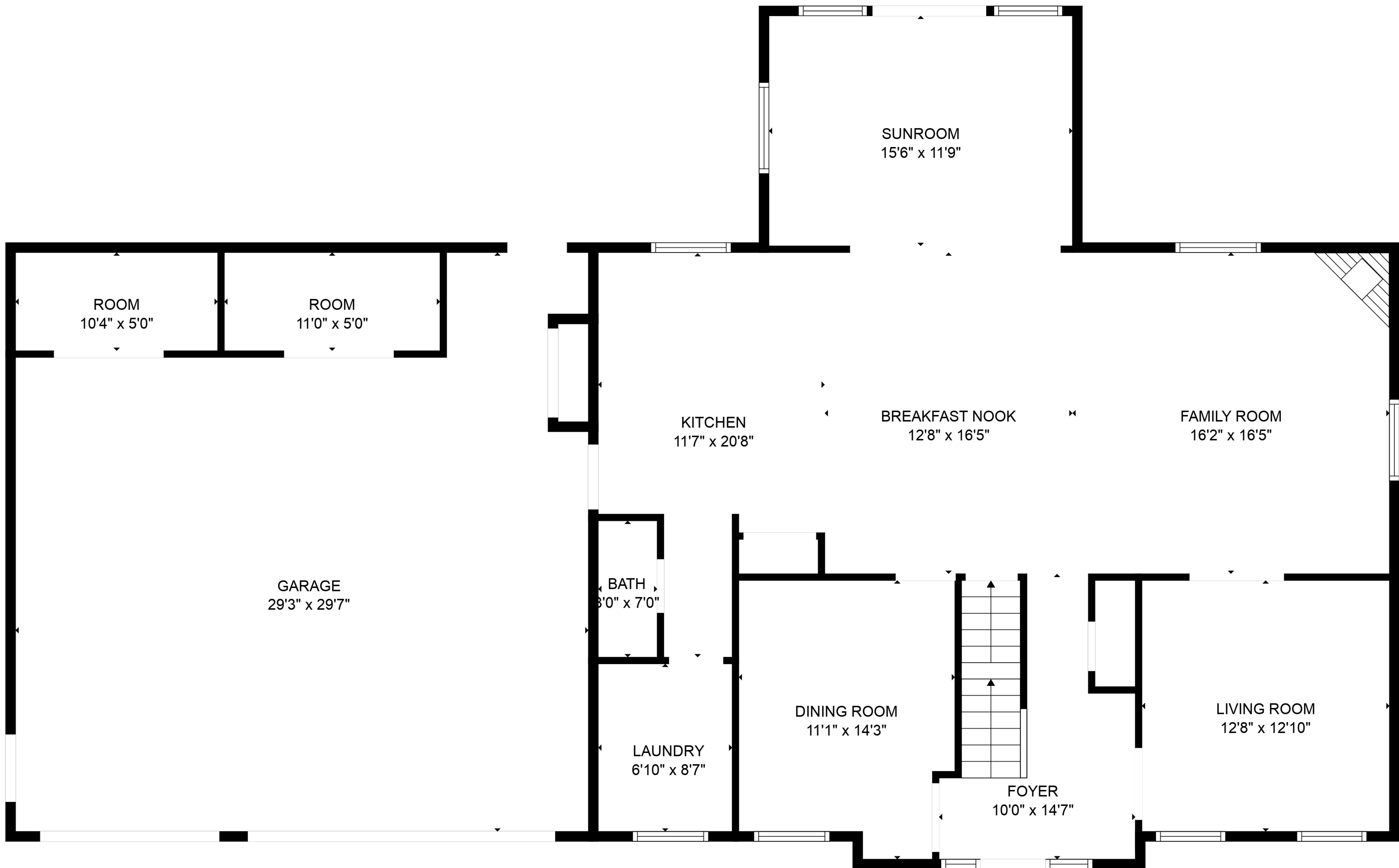
BASEMENT
19'6" x 15'4"

ELECTRICAL ROOM
6'6" x 15'4"

GYM
21'11" x 15'5"

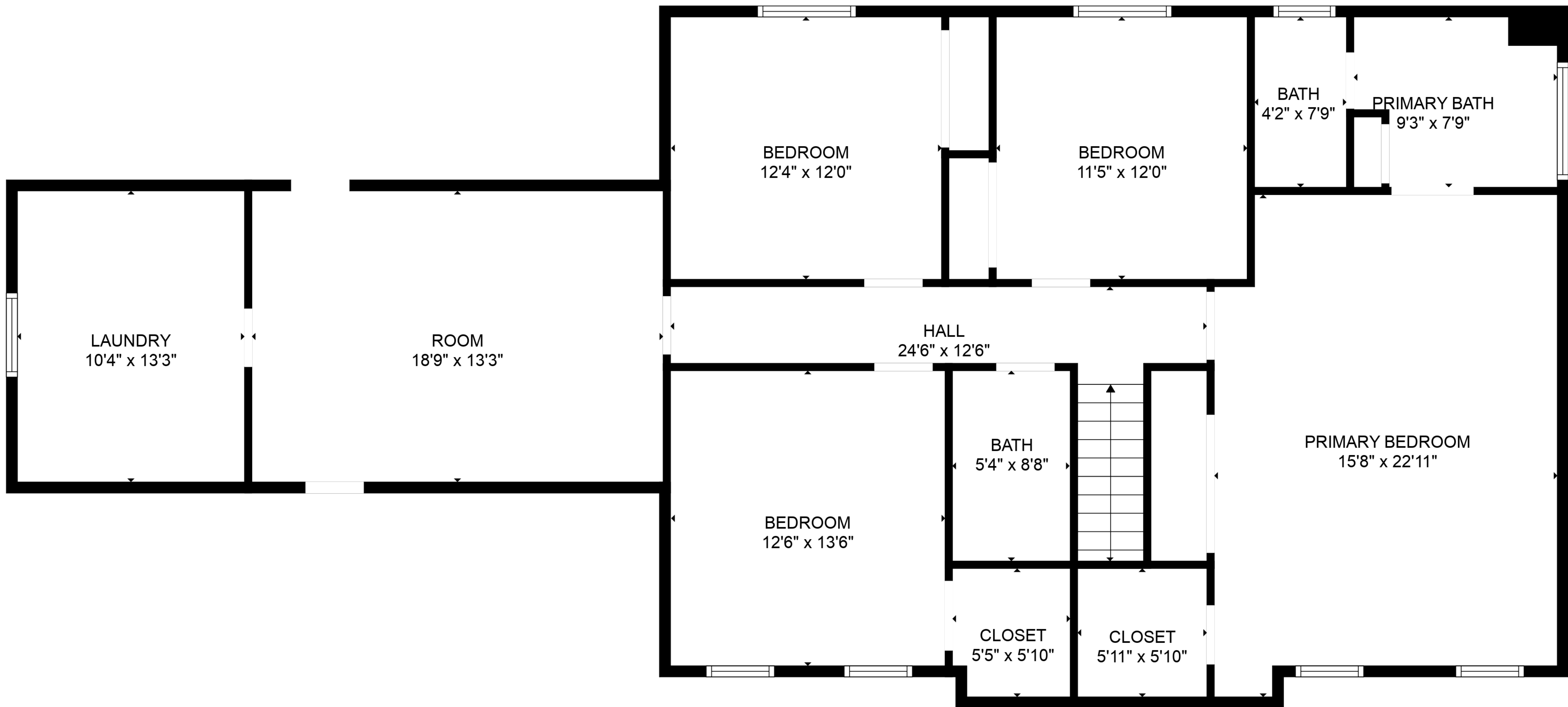
EAT-IN KITCHEN
16'4" x 15'5"

Estimated areas
GLA FLOOR 1: 0 sq. ft, excluded 1290 sq. ft
GLA FLOOR 2: 1490 sq. ft, excluded 912 sq. ft
GLA FLOOR 3: 1716 sq. ft, excluded 0 sq. ft
Total GLA 3206 sq. ft, total scanned area 5408 sq. ft



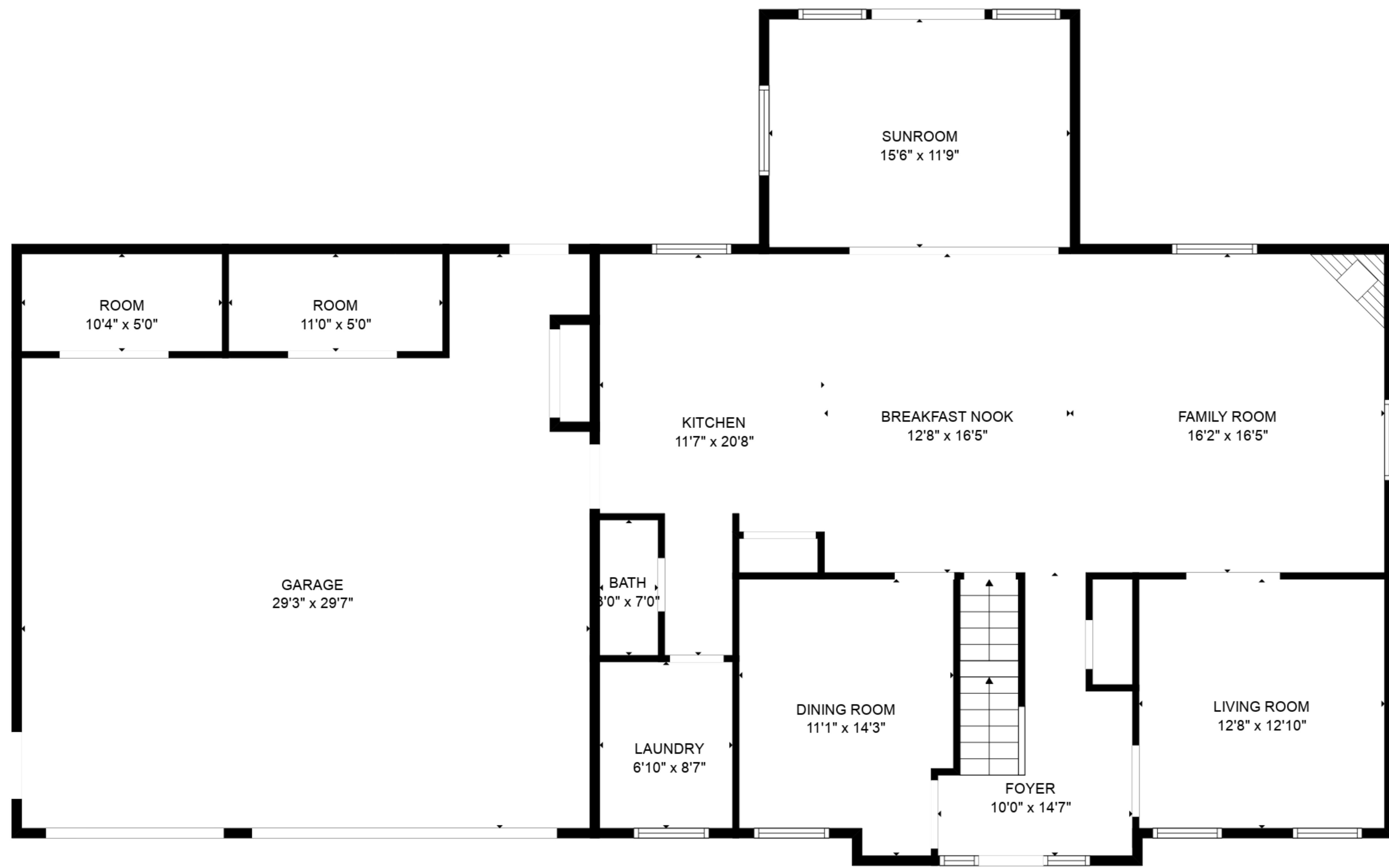
Estimated areas

GLA FLOOR 1: 0 sq. ft, excluded 1290 sq. ft
 GLA FLOOR 2: 1490 sq. ft, excluded 912 sq. ft
 GLA FLOOR 3: 1716 sq. ft, excluded 0 sq. ft
 Total GLA 3206 sq. ft, total scanned area 5408 sq. ft

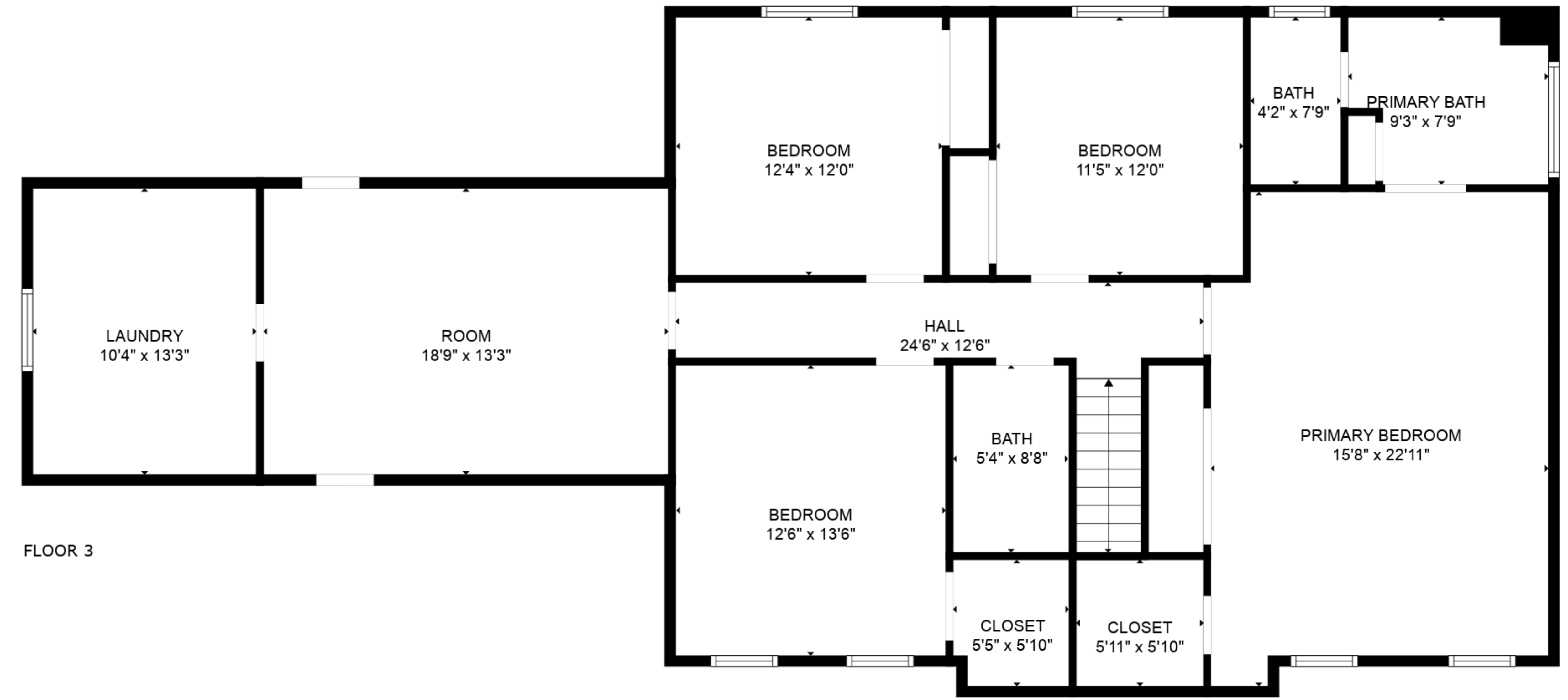


Estimated areas

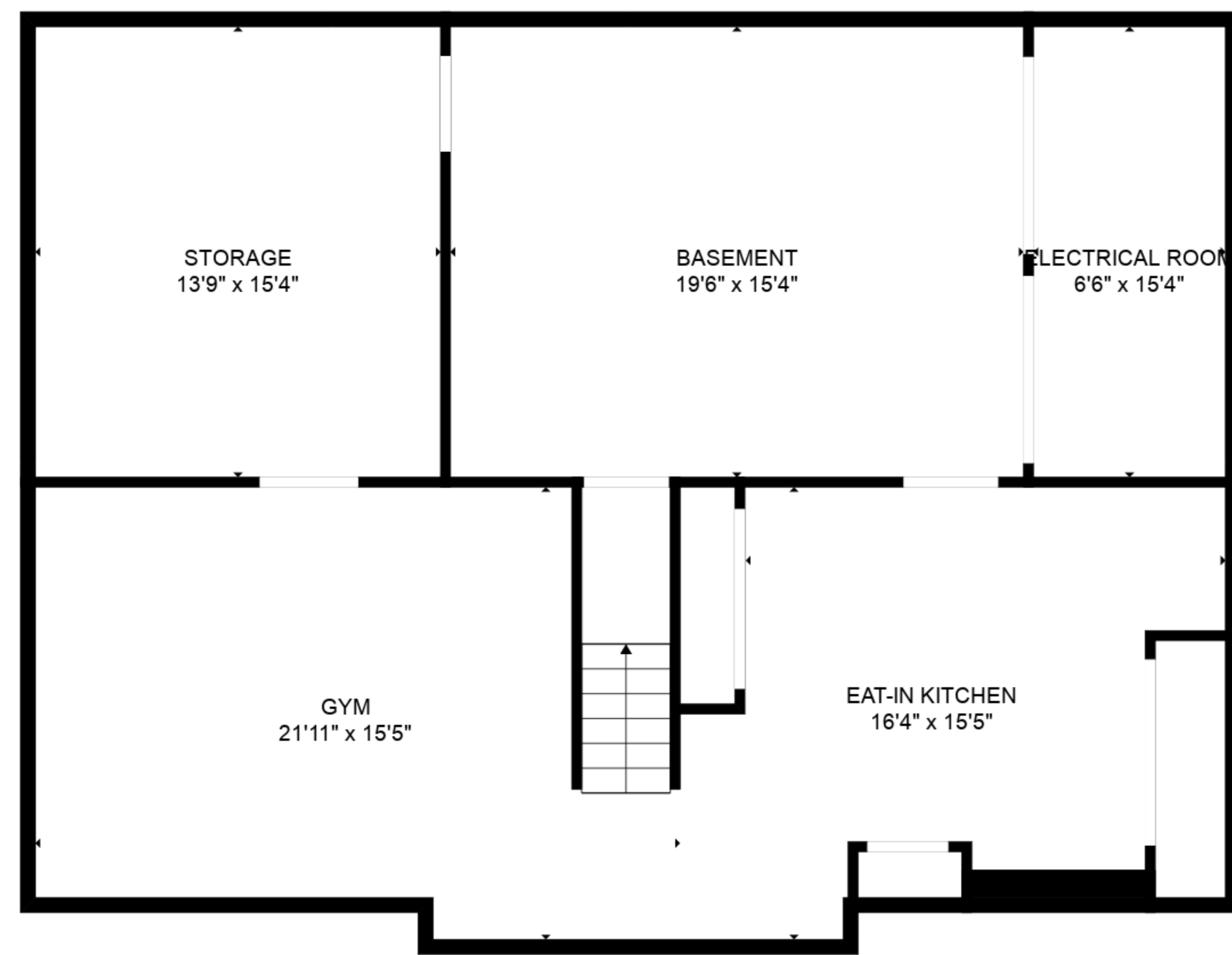
GLA FLOOR 1: 0 sq. ft, excluded 1290 sq. ft
 GLA FLOOR 2: 1490 sq. ft, excluded 912 sq. ft
 GLA FLOOR 3: 1716 sq. ft, excluded 0 sq. ft
 Total GLA 3206 sq. ft, total scanned area 5408 sq. ft



FLOOR 2



FLOOR 3



FLOOR 1

Estimated areas

GLA FLOOR 1: 0 sq. ft, excluded 1290 sq. ft
 GLA FLOOR 2: 1490 sq. ft, excluded 912 sq. ft
 GLA FLOOR 3: 1716 sq. ft, excluded 0 sq. ft
 Total GLA 3206 sq. ft, total scanned area 5408 sq. ft