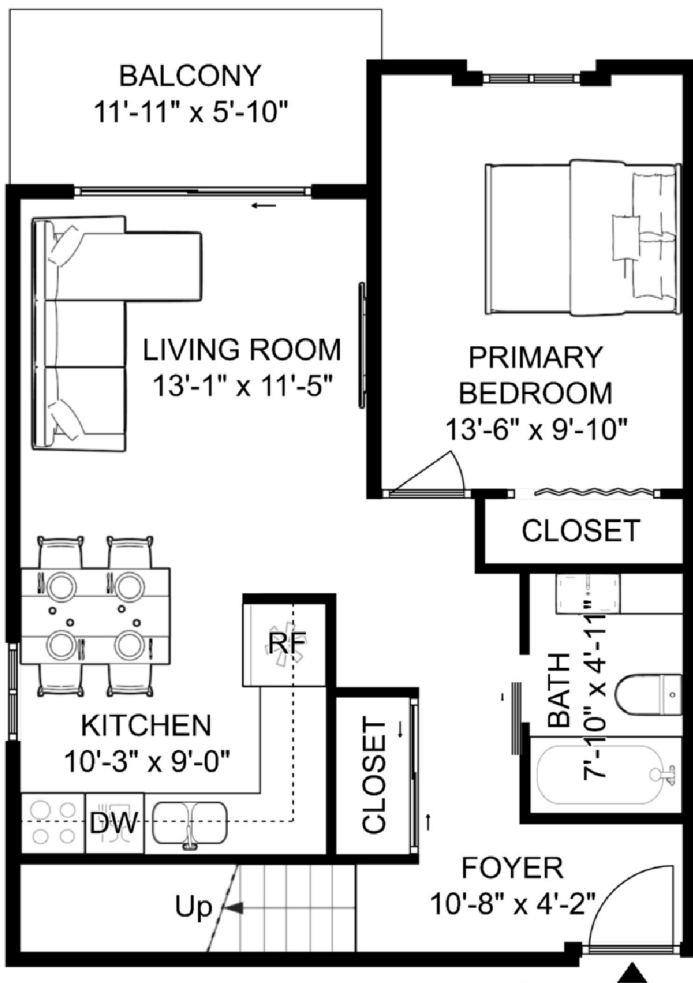


206 - 1202 London Street New Westminster

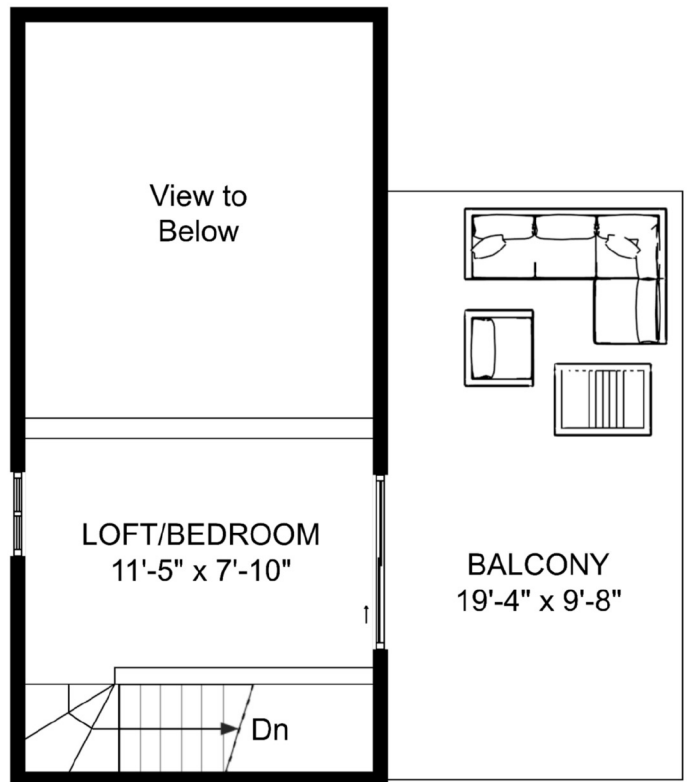
INTERIOR LIVING SPACE	(sq.ft.)
Upper Floor	153
Main Floor	623
Total Area	776

AUXILIARY	
Balcony Total	256
Combined Total	1,032

MAIN FLOOR
623 sq.ft. | Ceiling Height: 8'-0" to 16'-1"



UPPER FLOOR
153 sq.ft. | Ceiling Height: 8'-0"



2 bed 1 bath 1 locker 1 parking

The floor plan is not suitable for architectural/construction and is covered under E&O. All right reserved for Virtualized Studio. User shall not publish and distribute such material and/or incorporate it in other works in any form.

