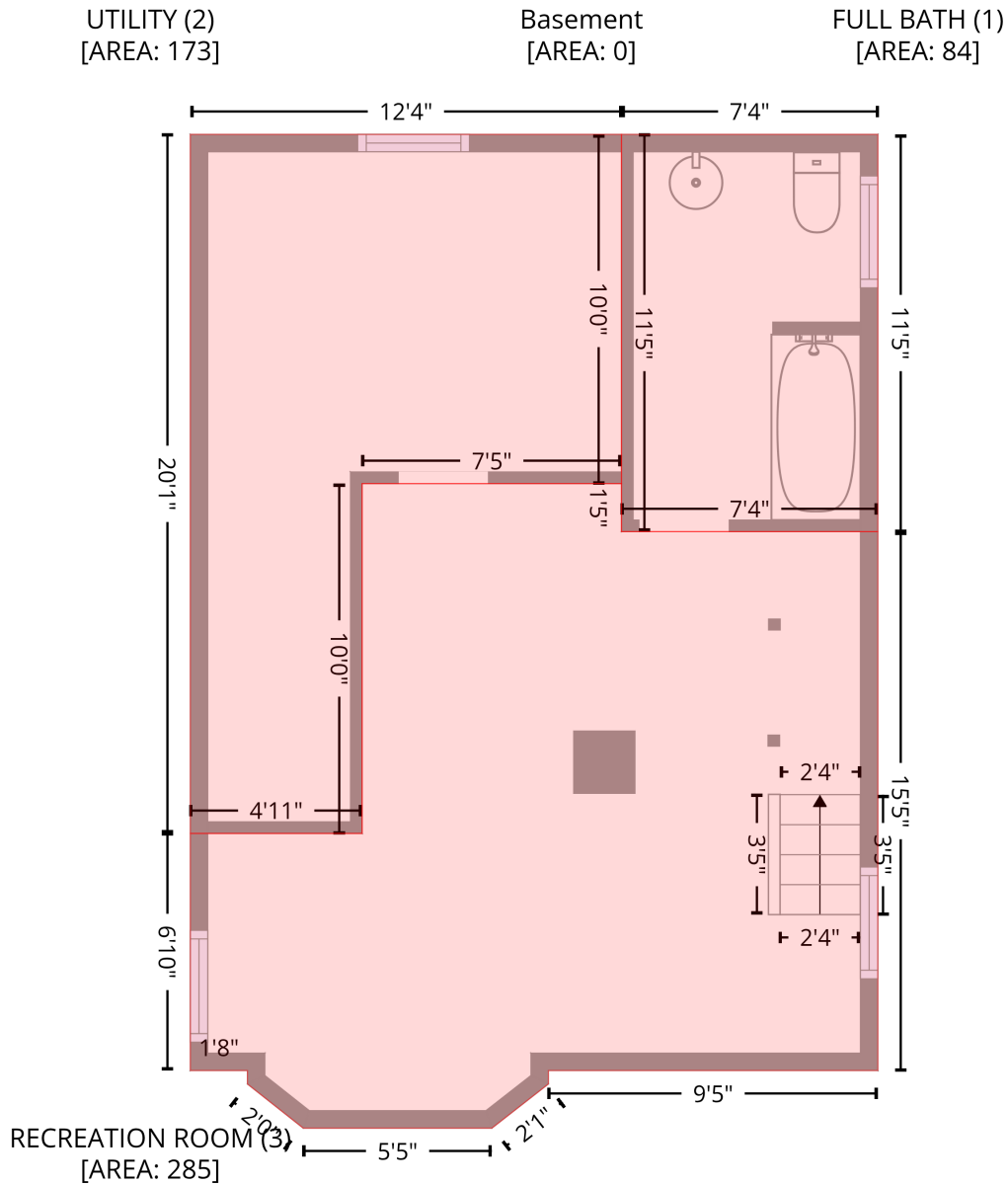


70 Eleventh Street, New Toronto, Etobicoke, Ontario, Canada, M8V 3G5

Gross Living Area: 1053 sq. ft

Level 1 - Below Grade



Space	Area (sq. ft)	Calculation <small>Coordinate Polygon Area Algorithm using inches</small>
FULL BATH (Non-living area)	84	$-\left((265.7 + 265.7) * (22.3 - 159.1) + (265.7 + 177.5) * (159.1 - 159.1) + (177.5 + 177.5) * (159.1 - 22.3) + (177.5 + 265.7) * (22.3 - 22.3)\right) * 0.5 * 0.00694$
UTILITY (Non-living area)	173	$-\left((177.5 + 177.5) * (22.3 - 142.5) + (177.5 + 88.2) * (142.5 - 142.5) + (88.2 + 88.2) * (142.5 - 262.9) + (88.2 + 29) * (262.9 - 262.9) + (29 + 29) * (262.9 - 22.3) + (29 + 177.5) * (22.3 - 22.3)\right) * 0.5 * 0.00694$

70 Eleventh Street, New Toronto, Etobicoke, Ontario, Canada, M8V 3G5

Gross Living Area: 1053 sq. ft

Level 1 - Below Grade

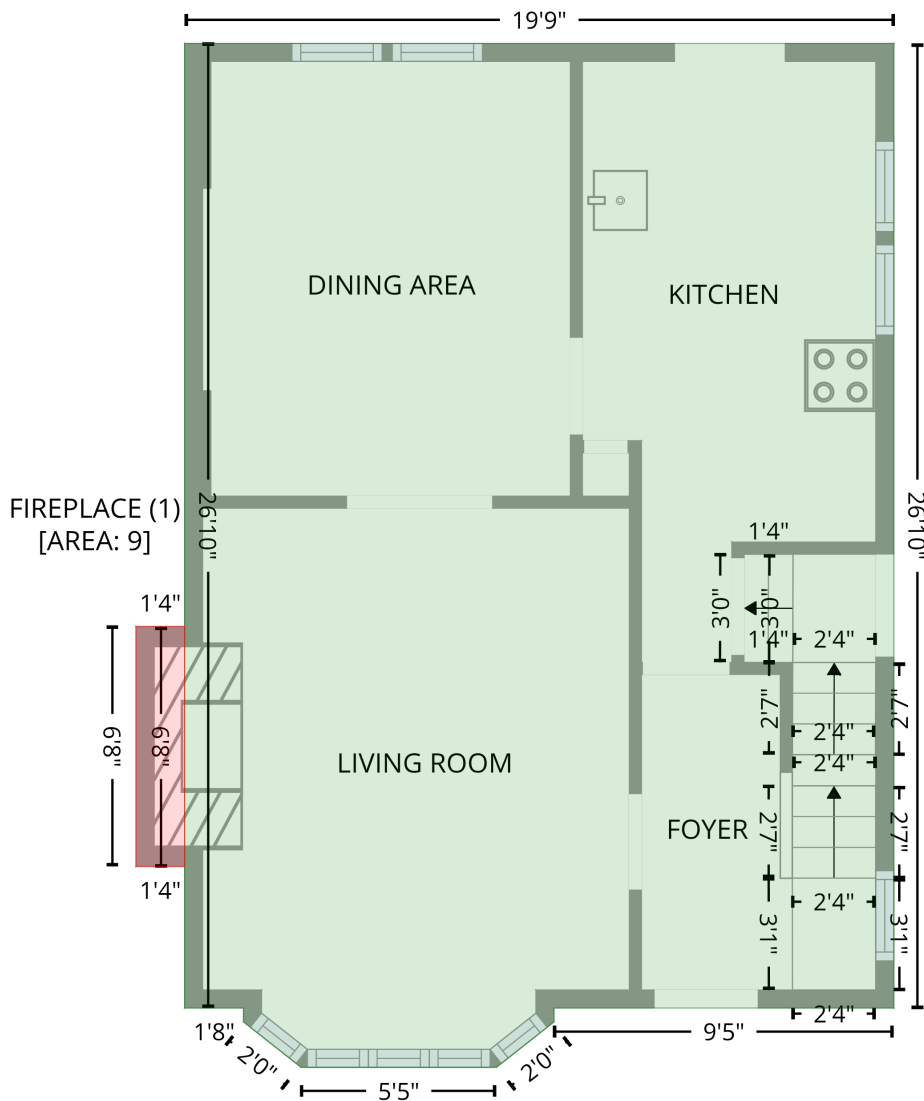
Space	Area (sq. ft)	Calculation <small>Coordinate Polygon Area Algorithm using inches</small>
RECREATION ROOM (Non-living area)	285	$\begin{aligned} & -((177.5 + 177.5) * (142.5 - 159.1) + (177.5 + 265.7) * (159.1 - 159.1) + (265.7 + 265.7) * (159.1 - \\ & 344.5) + (265.7 + 152.3) * (344.5 - 344.5) + (152.3 + 152.3) * (344.5 - 349.1) + (152.3 + 132.9) * \\ & (349.1 - 364.3) + (132.9 + 67.9) * (364.3 - 364.3) + (67.9 + 48.7) * (364.3 - 349.1) + (48.7 + 48.7) * \\ & (349.1 - 344.5) + (48.7 + 29) * (344.5 - 344.5) + (29 + 29) * (344.5 - 262.9) + (29 + 88.2) * \\ & (262.9 - 262.9) + (88.2 + 88.2) * (262.9 - 142.5) + (88.2 + 177.5) * (142.5 - 142.5)) * 0.5 * \\ & 0.00694 \end{aligned}$

70 Eleventh Street, New Toronto, Etobicoke, Ontario, Canada, M8V 3G5

Gross Living Area: 1053 sq. ft

Level 2

1st floor
[AREA: 542]



Space	Area (sq. ft)	Calculation
1st floor (Living area)	542	Coordinate Polygon Area Algorithm using inches $-((265.7 + 265.7) * (22.3 - 344.5) + (265.7 + 152.3) * (344.5 - 344.5) + (152.3 + 152.3) * (344.5 - 349.1) + (152.3 + 133.1) * (349.1 - 364.3) + (133.1 + 67.9) * (364.3 - 364.3) + (67.9 + 48.7) * (364.3 - 349.1) + (48.7 + 48.7) * (349.1 - 344.5) + (48.7 + 29) * (344.5 - 344.5) + (29 + 29) * (344.5 - 22.3) + (29 + 265.7) * (22.3 - 22.3)) * 0.5 * 0.00694$
FIREPLACE (Non-living area)	9	$-((29 + 29) * (217.1 - 297.2) + (29 + 12.8) * (297.2 - 297.2) + (12.8 + 12.8) * (297.2 - 217.1) + (12.8 + 29) * (217.1 - 217.1)) * 0.5 * 0.00694$

70 Eleventh Street, New Toronto, Etobicoke, Ontario, Canada, M8V 3G5

Gross Living Area: 1053 sq. ft

Level 3

2nd floor
[AREA: 511]



Space	Area (sq. ft)	Calculation <small>Coordinate Polygon Area Algorithm using inches</small>
2nd floor (Living area)	511	$-\left((265.7 + 265.7) * (22.3 - 344.5) + (265.7 + 67.2) * (344.5 - 344.5) + (67.2 + 67.2) * (344.5 - 300.8) + (67.2 + 69.2) * (300.8 - 294.8) + (69.2 + 69.2) * (294.8 - 276.2) + (69.2 + 29) * (276.2 - 276.2) + (29 + 29) * (276.2 - 22.3) + (29 + 265.7) * (22.3 - 22.3)\right) * 0.5 * 0.00694$
LOW CEILING (Non-living area)	7	$-\left((69.2 + 69.2) * (276.2 - 294.8) + (69.2 + 67.2) * (294.8 - 300.8) + (67.2 + 29) * (300.8 - 300.8) + (29 + 29) * (300.8 - 276.2) + (29 + 69.2) * (276.2 - 276.2)\right) * 0.5 * 0.00694$