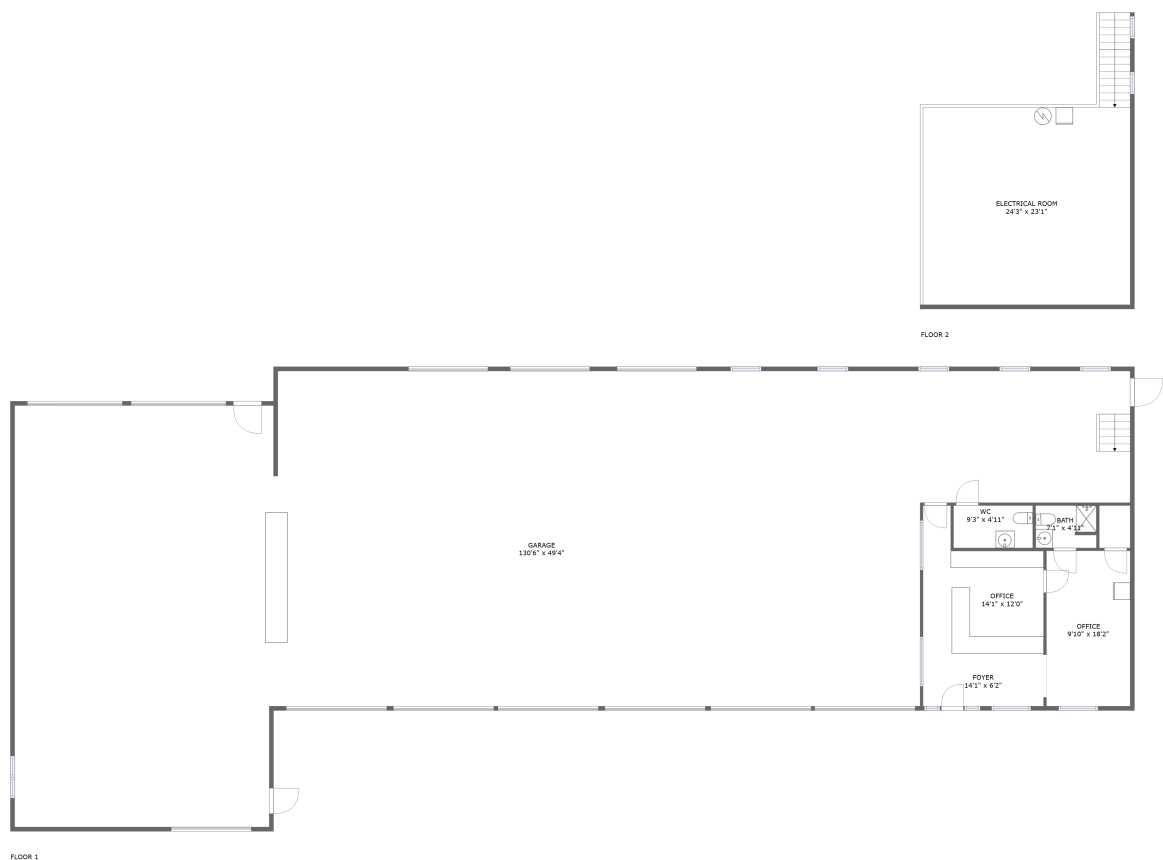


Home report

919 Gus W Nicks Boulevard Northeast, Roanoke, Virginia 24012,
United States



Total GLA: 560 sq. ft
Floor 1: 560 sq. ft, Floor 2: 0 sq. ft
Excluded: Garage 4995 sq. ft, WC 46 sq. ft, Electrical room 640 sq. ft

Property summary

 **2**
Floors

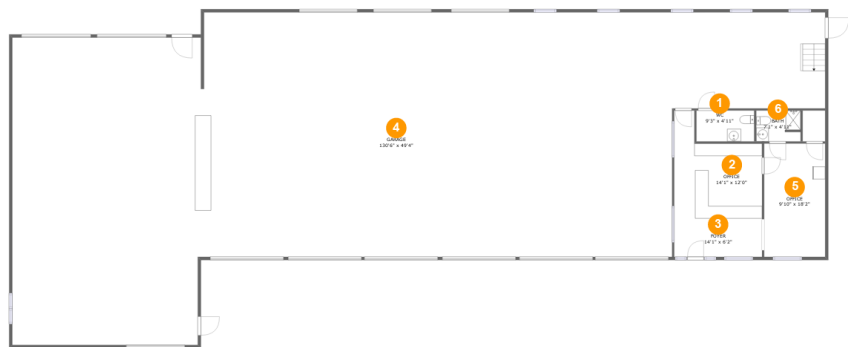
 **1**
Bathrooms

 **1**
Half baths

 **1**
Garages

Home report

919 Gus W Nicks Boulevard Northeast, Roanoke, Virginia 24012, United States



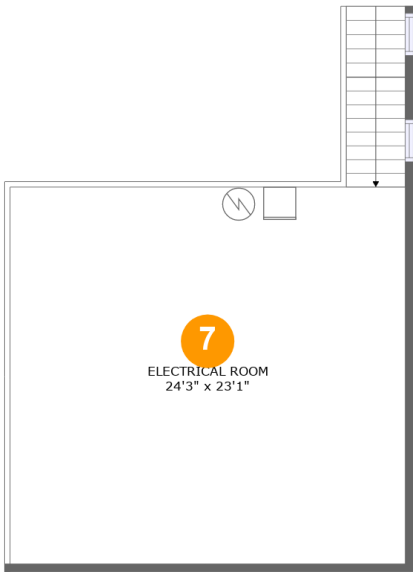
Room dimensions

Floor 1 Total:560sqft Excluded: 5041sqft

#		Max Dimensions	sqft	Included
1	WC	9'3" x 4'11"	46 sq. ft	No
2	Office	14'1" x 12'0"	187 sq. ft	Yes
3	Foyer	14'1" x 6'2"	87 sq. ft	Yes
4	Garage	130'6" x 49'4"	4827 sq. ft	No
5	Office	9'10" x 18'2"	178 sq. ft	Yes
6	Bath	7'1" x 4'11"	35 sq. ft	Yes

Home report

919 Gus W Nicks Boulevard Northeast, Roanoke, Virginia 24012, United States



Room dimensions

Floor 2 Total:0sqft Excluded: 640sqft

#		Max Dimensions	sqft	Included
7	Electrical Room	24'3" x 23'1"	610 sq. ft	No

1 Floor 1 - WC



Max Dimensions: 9'3" x 4'11"
Calculated Area: 46 sq. ft
Included: No

Heated: Yes
Finished: Yes
Enclosed: Yes
Contiguous: No
Permitted: Yes
Wet space: Yes
Addition: No
Conversion: No

2 Floor 1 - Office



Max Dimensions: 14'1" x 12'0"
Calculated Area: 187 sq. ft
Included: Yes

Heated: Yes
Finished: Yes
Enclosed: Yes
Contiguous: Yes
Permitted: Yes
Wet space: No
Addition: No
Conversion: No

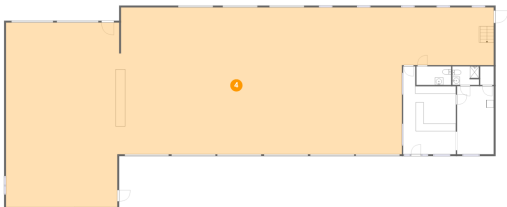
3 Floor 1 - Foyer



Max Dimensions: 14'1" x 6'2"
Calculated Area: 87 sq. ft
Included: Yes

Heated: Yes
Finished: Yes
Enclosed: Yes
Contiguous: Yes
Permitted: Yes
Wet space: No
Addition: No
Conversion: No

4 Floor 1 - Garage



Max Dimensions: 130'6" x 49'4"
Calculated Area: 4827 sq. ft
Included: No

Heated: No
Finished: No
Enclosed: Yes
Contiguous: No
Permitted: Yes
Wet space: No
Addition: No
Conversion: No

5 Floor 1 - Office



Max Dimensions: 9'10" x 18'2"
Calculated Area: 178 sq. ft
Included: Yes

Heated: Yes
Finished: Yes
Enclosed: Yes
Contiguous: Yes
Permitted: Yes
Wet space: No
Addition: No
Conversion: No

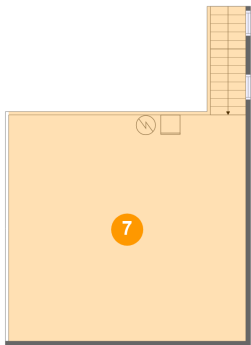
6 Floor 1 - Bath



Max Dimensions: 7'1" x 4'11"
Calculated Area: 35 sq. ft
Included: Yes

Heated: Yes
Finished: Yes
Enclosed: Yes
Contiguous: Yes
Permitted: Yes
Wet space: Yes
Addition: No
Conversion: No

7 Floor 2 - Electrical Room



Max Dimensions: 24'3" x 23'1"
Calculated Area: 610 sq. ft
Included: No

Heated: No
Finished: No
Enclosed: Yes
Contiguous: Yes
Permitted: Yes
Wet space: No
Addition: No
Conversion: No