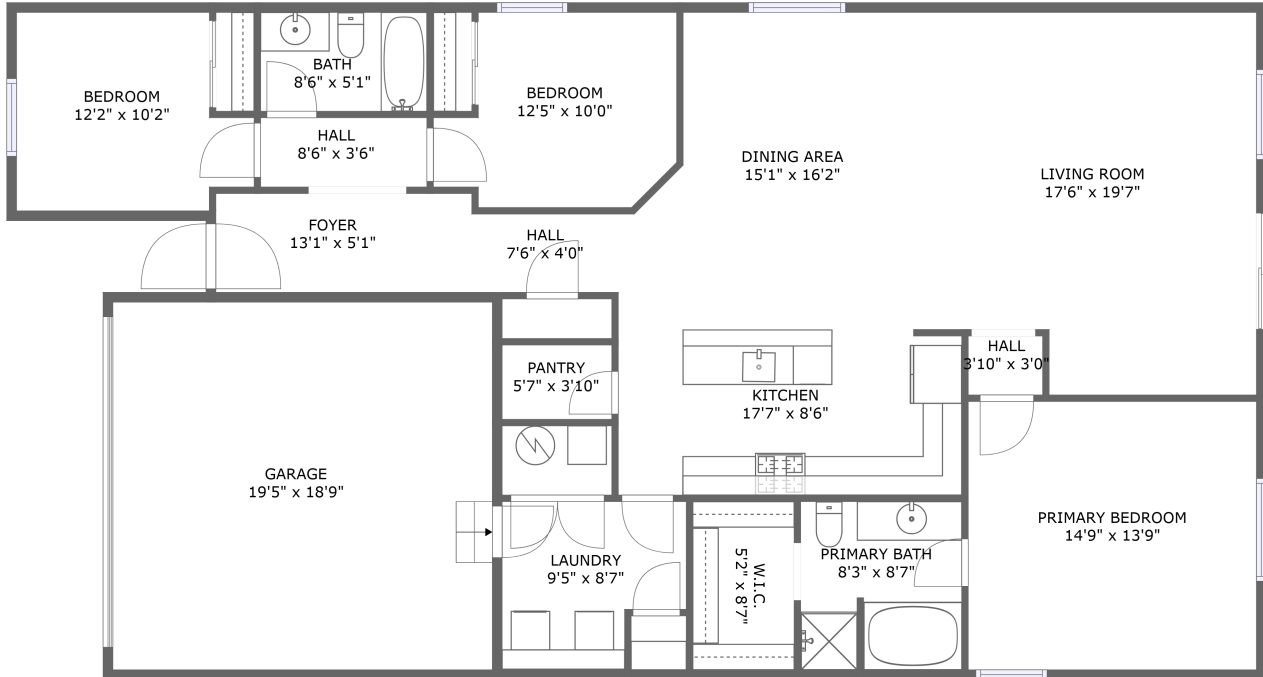


Ute Way, Lochbuie, CO, US




FLOOR 1

Property Summary


 **1** garages

 **3** bedrooms

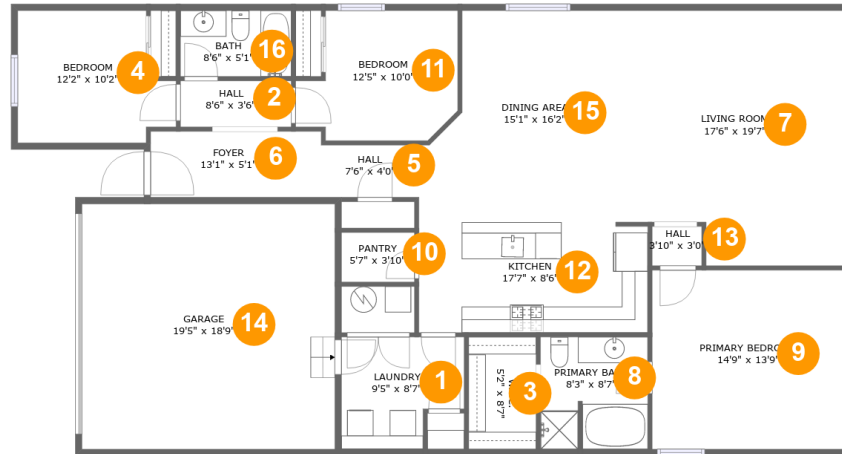
 **2** bathrooms

 **0** half baths

 **1** floors

 **1,705** Gross Living Area sqft

 **2,091** total sqft

Ute Way, Lochbuie, CO, US**Room Dimensions****Floor 1****Total sqft: 2091****Living area: 1705**

#	Room name	Dimensions	Area (sqft)	Counted as Living Area
1	Laundry	9'5" x 8'7"	71 sq. ft	Yes
2	Hall	8'6" x 3'6"	30 sq. ft	Yes
3	W.i.c.	5'2" x 8'7"	45 sq. ft	Yes
4	Bedroom	12'2" x 10'2"	108 sq. ft	Yes
5	Hall	7'6" x 4'0"	30 sq. ft	Yes
6	Foyer	13'1" x 5'1"	66 sq. ft	Yes
7	Living Room	17'6" x 19'7"	319 sq. ft	Yes
8	Primary Bath	8'3" x 8'7"	70 sq. ft	Yes
9	Primary Bedroom	14'9" x 13'9"	202 sq. ft	Yes
10	Pantry	5'7" x 3'10"	21 sq. ft	Yes
11	Bedroom	12'5" x 10'0"	106 sq. ft	Yes

Scan captured on Wed, 09 Oct 2024 01:54:59 GMT

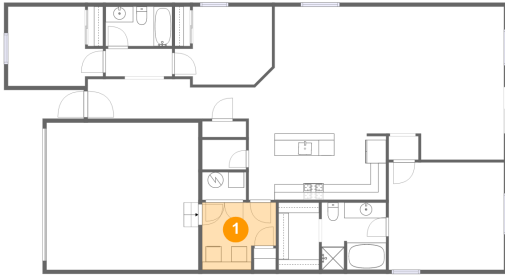
Information is calculated by CubiCasa technology; deemed highly reliable but not guaranteed.

Ute Way, Lochbuie, CO, US

#	Room name	Dimensions	Area (sqft)	Counted as Living Area
12	Kitchen	17'7" x 8'6"	148 sq. ft	Yes
13	Hall	3'10" x 3'0"	11 sq. ft	Yes
14	Garage	19'5" x 18'9"	364 sq. ft	No
15	Dining Area	15'1" x 16'2"	213 sq. ft	Yes
16	Bath	8'6" x 5'1"	43 sq. ft	Yes

Ute Way, Lochbuie, CO, US

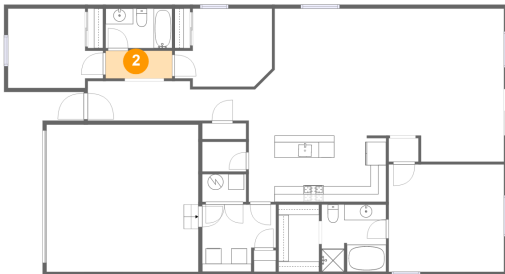
1 Floor 1 - Laundry



Dimensions: 9'5" x 8'7"
Area: 71 sq. ft
Counted as Living Area:
Yes

Heated: Yes
Finished: Yes
Enclosed: Yes
Contiguous:
Yes
Permitted: Yes
Wet Space: No
Addition: No
Conversion: No

2 Floor 1 - Hall

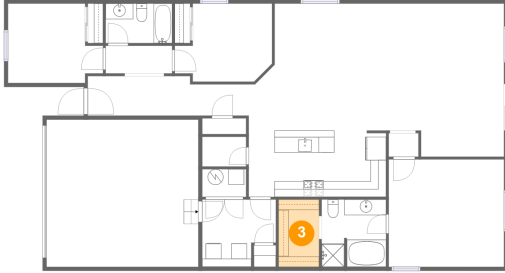


Dimensions: 8'6" x 3'6"
Area: 30 sq. ft
Counted as Living Area:
Yes

Heated: Yes
Finished: Yes
Enclosed: Yes
Contiguous:
Yes
Permitted: Yes
Wet Space: No
Addition: No
Conversion: No

Ute Way, Lochbuie, CO, US

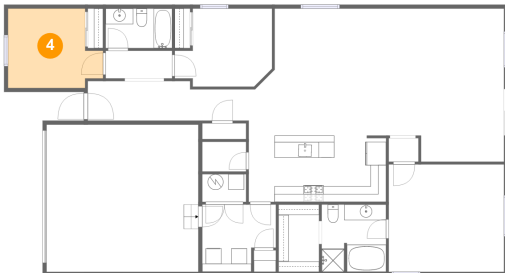
3 Floor 1 - W.i.c.



Dimensions: 5'2" x 8'7"
Area: 45 sq. ft
Counted as Living Area:
Yes

Heated: Yes
Finished: Yes
Enclosed: Yes
Contiguous:
Yes
Permitted: Yes
Wet Space: No
Addition: No
Conversion: No

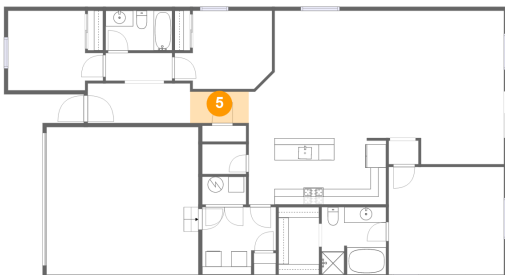
4 Floor 1 - Bedroom



Dimensions: 12'2" x 10'2"
Area: 108 sq. ft
Counted as Living Area:
Yes

Heated: Yes
Finished: Yes
Enclosed: Yes
Contiguous:
Yes
Permitted: Yes
Wet Space: No
Addition: No
Conversion: No

5 Floor 1 - Hall

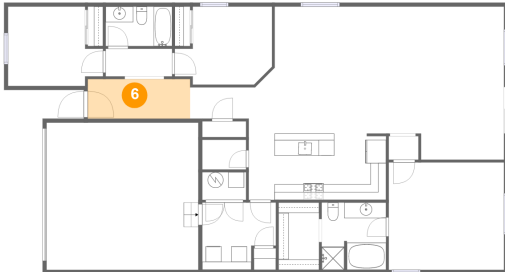


Dimensions: 7'6" x 4'0"
Area: 30 sq. ft
Counted as Living Area:
Yes

Heated: Yes
Finished: Yes
Enclosed: Yes
Contiguous:
Yes
Permitted: Yes
Wet Space: No
Addition: No
Conversion: No

Ute Way, Lochbuie, CO, US

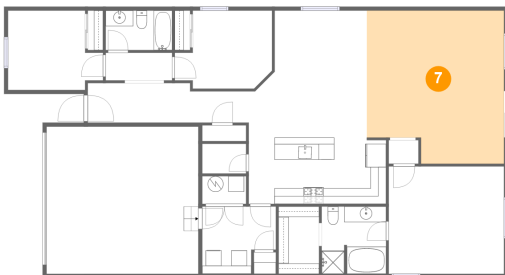
6 Floor 1 - Foyer



Dimensions: 13'1" x 5'1"
Area: 66 sq. ft
Counted as Living Area:
Yes

Heated: Yes
Finished: Yes
Enclosed: Yes
Contiguous:
Yes
Permitted: Yes
Wet Space: No
Addition: No
Conversion: No

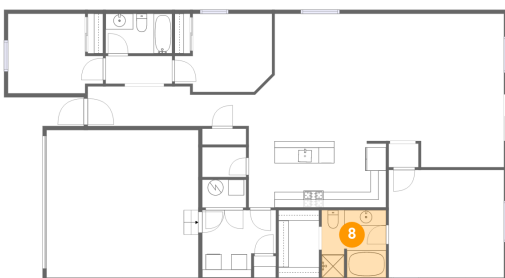
7 Floor 1 - Living Room



Dimensions: 17'6" x 19'7"
Area: 319 sq. ft
Counted as Living Area:
Yes

Heated: Yes
Finished: Yes
Enclosed: Yes
Contiguous:
Yes
Permitted: Yes
Wet Space: No
Addition: No
Conversion: No

8 Floor 1 - Primary Bath

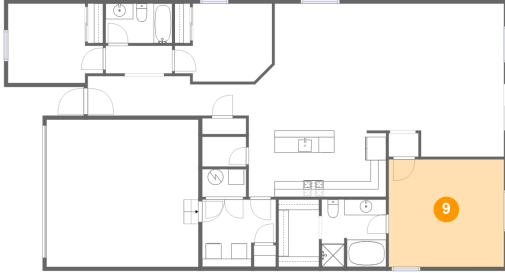


Dimensions: 8'3" x 8'7"
Area: 70 sq. ft
Counted as Living Area:
Yes

Heated: Yes
Finished: Yes
Enclosed: Yes
Contiguous:
Yes
Permitted: Yes
Wet Space: Yes
Addition: No
Conversion: No

Ute Way, Lochbuie, CO, US

9 Floor 1 - Primary Bedroom



Dimensions: 14'9" x 13'9"
Area: 202 sq. ft
Counted as Living Area:
Yes

Heated: Yes
Finished: Yes
Enclosed: Yes
Contiguous:
Yes
Permitted: Yes
Wet Space: No
Addition: No
Conversion: No

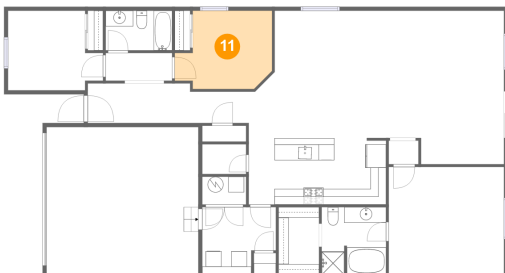
10 Floor 1 - Pantry



Dimensions: 5'7" x 3'10"
Area: 21 sq. ft
Counted as Living Area:
Yes

Heated: Yes
Finished: Yes
Enclosed: Yes
Contiguous:
Yes
Permitted: Yes
Wet Space: No
Addition: No
Conversion: No

11 Floor 1 - Bedroom

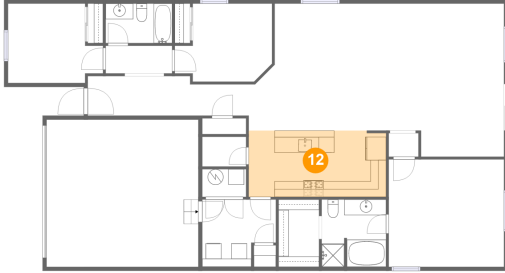


Dimensions: 12'5" x 10'0"
Area: 106 sq. ft
Counted as Living Area:
Yes

Heated: Yes
Finished: Yes
Enclosed: Yes
Contiguous:
Yes
Permitted: Yes
Wet Space: No
Addition: No
Conversion: No

Ute Way, Lochbuie, CO, US

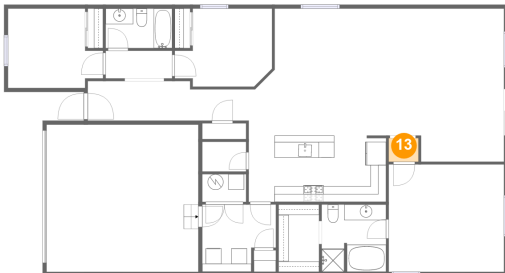
12 Floor 1 - Kitchen



Dimensions: 17'7" x 8'6"
Area: 148 sq. ft
Counted as Living Area:
Yes

Heated: Yes
Finished: Yes
Enclosed: Yes
Contiguous:
Yes
Permitted: Yes
Wet Space: No
Addition: No
Conversion: No

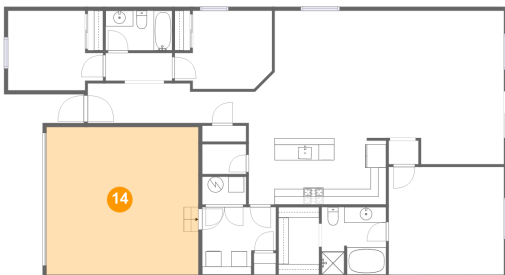
13 Floor 1 - Hall



Dimensions: 3'10" x 3'0"
Area: 11 sq. ft
Counted as Living Area:
Yes

Heated: Yes
Finished: Yes
Enclosed: Yes
Contiguous:
Yes
Permitted: Yes
Wet Space: No
Addition: No
Conversion: No

14 Floor 1 - Garage

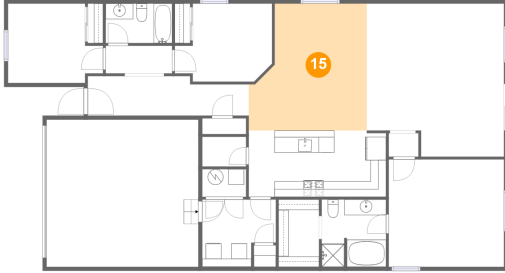


Dimensions: 19'5" x 18'9"
Area: 364 sq. ft
Counted as Living Area: No

Heated: No
Finished: No
Enclosed: Yes
Contiguous: Yes
Permitted: Yes
Wet Space: No
Addition: No
Conversion: No

Ute Way, Lochbuie, CO, US

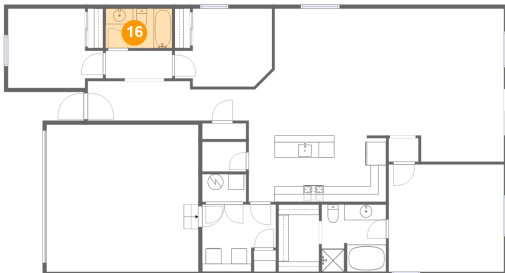
15 Floor 1 - Dining Area



Dimensions: 15'1" x 16'2"
Area: 213 sq. ft
Counted as Living Area:
Yes

Heated: Yes
Finished: Yes
Enclosed: Yes
Contiguous:
Yes
Permitted: Yes
Wet Space: No
Addition: No
Conversion: No

16 Floor 1 - Bath



Dimensions: 8'6" x 5'1"
Area: 43 sq. ft
Counted as Living Area:
Yes

Heated: Yes
Finished: Yes
Enclosed: Yes
Contiguous:
Yes
Permitted: Yes
Wet Space: Yes
Addition: No
Conversion: No