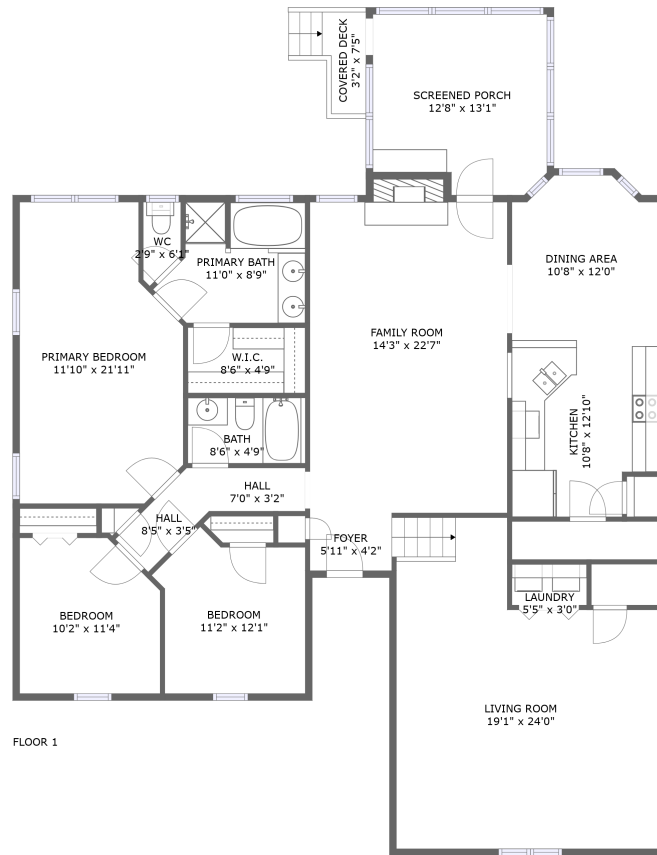


# 2250 Dewey Drive, Spring Hill, Williamson County, Tennessee, United States, 37174



## Property summary

 **0** Garages

 **3** Bedrooms

 **2** Bathrooms

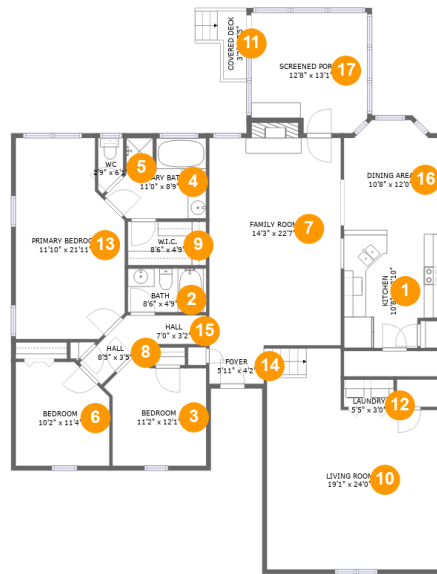
 **0** Half baths

 **1** Floors

 **1,927** Gross living area sqft

 **2,138** Total sqft

# 2250 Dewey Drive, Spring Hill, Williamson County, Tennessee, United States, 37174



## Room dimensions

Floor 1

Total sqft: 2138 Living area: 1927

#		Dimensions	sqft	Counted as living area
1	Kitchen	10'8" x 12'10"	129 sq. ft	Yes
2	Bath	8'6" x 4'9"	40 sq. ft	Yes
3	Bedroom	11'2" x 12'1"	111 sq. ft	Yes
4	Primary Bath	11'0" x 8'9"	81 sq. ft	Yes
5	WC	2'9" x 6'1"	14 sq. ft	Yes
6	Bedroom	10'2" x 11'4"	108 sq. ft	Yes
7	Family Room	14'3" x 22'7"	332 sq. ft	Yes
8	Hall	8'5" x 3'5"	25 sq. ft	Yes
9	W.I.C.	8'6" x 4'9"	41 sq. ft	Yes
10	Living Room	19'1" x 24'0"	386 sq. ft	Yes
11	Covered Deck	3'2" x 7'5"	28 sq. ft	No

**2250 Dewey Drive, Spring Hill, Williamson County,  
Tennessee, United States, 37174**

#		Dimensions	sqft	Counted as living area
12	Laundry	5'5" x 3'0"	16 sq. ft	Yes
13	Primary Bedroom	11'10" x 21'11"	232 sq. ft	Yes
14	Foyer	5'11" x 4'2"	25 sq. ft	Yes
15	Hall	7'0" x 3'2"	22 sq. ft	Yes
16	Dining Area	10'8" x 12'0"	119 sq. ft	Yes
17	Screened Porch	12'8" x 13'1"	155 sq. ft	No

**2250 Dewey Drive, Spring Hill, Williamson County,  
Tennessee, United States, 37174**

## 1 Floor 1 - Kitchen



**Dimensions: 10'8" x 12'10"**  
**Area: 129 sq. ft**  
**Counted as living area: Yes**

**Heated: Yes**  
**Finished: Yes**  
**Enclosed: Yes**  
**Contiguous: Yes**  
**Permitted: Yes**  
**Wet space: No**  
**Addition: No**  
**Conversion: No**

## 2 Floor 1 - Bath

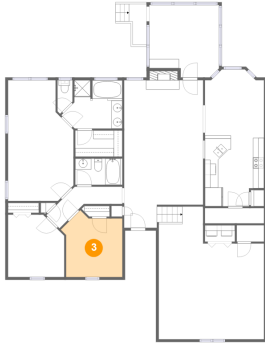


**Dimensions: 8'6" x 4'9"**  
**Area: 40 sq. ft**  
**Counted as living area: Yes**

**Heated: Yes**  
**Finished: Yes**  
**Enclosed: Yes**  
**Contiguous: Yes**  
**Permitted: Yes**  
**Wet space: Yes**  
**Addition: No**  
**Conversion: No**

2250 Dewey Drive, Spring Hill, Williamson County,  
Tennessee, United States, 37174

### 3 Floor 1 - Bedroom



Dimensions: 11'2" x 12'1"  
Area: 111 sq. ft  
Counted as living area: Yes

Heated: Yes  
Finished: Yes  
Enclosed: Yes  
Contiguous: Yes  
Permitted: Yes  
Wet space: No  
Addition: No  
Conversion: No

### 4 Floor 1 - Primary Bath



Dimensions: 11'0" x 8'9"  
Area: 81 sq. ft  
Counted as living area: Yes

Heated: Yes  
Finished: Yes  
Enclosed: Yes  
Contiguous: Yes  
Permitted: Yes  
Wet space: Yes  
Addition: No  
Conversion: No

### 5 Floor 1 - WC



Dimensions: 2'9" x 6'1"  
Area: 14 sq. ft  
Counted as living area: Yes

Heated: Yes  
Finished: Yes  
Enclosed: Yes  
Contiguous: Yes  
Permitted: Yes  
Wet space: Yes  
Addition: No  
Conversion: No

2250 Dewey Drive, Spring Hill, Williamson County,  
Tennessee, United States, 37174

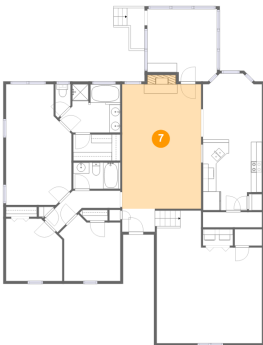
## 6 Floor 1 - Bedroom



Dimensions: 10'2" x 11'4"  
Area: 108 sq. ft  
Counted as living area: Yes

Heated: Yes  
Finished: Yes  
Enclosed: Yes  
Contiguous: Yes  
Permitted: Yes  
Wet space: No  
Addition: No  
Conversion: No

## 7 Floor 1 - Family Room



Dimensions: 14'3" x 22'7"  
Area: 332 sq. ft  
Counted as living area: Yes

Heated: Yes  
Finished: Yes  
Enclosed: Yes  
Contiguous: Yes  
Permitted: Yes  
Wet space: No  
Addition: No  
Conversion: No

## 8 Floor 1 - Hall



Dimensions: 8'5" x 3'5"  
Area: 25 sq. ft  
Counted as living area: Yes

Heated: Yes  
Finished: Yes  
Enclosed: Yes  
Contiguous: Yes  
Permitted: Yes  
Wet space: No  
Addition: No  
Conversion: No

2250 Dewey Drive, Spring Hill, Williamson County,  
Tennessee, United States, 37174

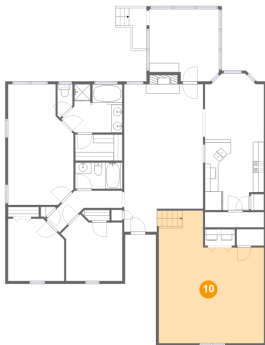
**9** Floor 1 - W.I.C.



Dimensions: 8'6" x 4'9"  
Area: 41 sq. ft  
Counted as living area: Yes

Heated: Yes  
Finished: Yes  
Enclosed: Yes  
Contiguous: Yes  
Permitted: Yes  
Wet space: No  
Addition: No  
Conversion: No

**10** Floor 1 - Living Room



Dimensions: 19'1" x 24'0"  
Area: 386 sq. ft  
Counted as living area: Yes

Heated: Yes  
Finished: Yes  
Enclosed: Yes  
Contiguous: Yes  
Permitted: Yes  
Wet space: No  
Addition: No  
Conversion: No

**11** Floor 1 - Covered Deck



Dimensions: 3'2" x 7'5"  
Area: 28 sq. ft  
Counted as living area: No

Heated: No  
Finished: Yes  
Enclosed: No  
Contiguous: Yes  
Permitted: Yes  
Wet space: No  
Addition: No  
Conversion: No

2250 Dewey Drive, Spring Hill, Williamson County,  
Tennessee, United States, 37174

### 12 Floor 1 - Laundry



Dimensions: 5'5" x 3'0"  
Area: 16 sq. ft  
Counted as living area: Yes

Heated: Yes  
Finished: Yes  
Enclosed: Yes  
Contiguous: Yes  
Permitted: Yes  
Wet space: No  
Addition: No  
Conversion: No

### 13 Floor 1 - Primary Bedroom



Dimensions: 11'10" x 21'11"  
Area: 232 sq. ft  
Counted as living area: Yes

Heated: Yes  
Finished: Yes  
Enclosed: Yes  
Contiguous: Yes  
Permitted: Yes  
Wet space: No  
Addition: No  
Conversion: No

### 14 Floor 1 - Foyer



Dimensions: 5'11" x 4'2"  
Area: 25 sq. ft  
Counted as living area: Yes

Heated: Yes  
Finished: Yes  
Enclosed: Yes  
Contiguous: Yes  
Permitted: Yes  
Wet space: No  
Addition: No  
Conversion: No



2250 Dewey Drive, Spring Hill, Williamson County,  
Tennessee, United States, 37174

**15** Floor 1 - Hall



Dimensions: 7'0" x 3'2"  
Area: 22 sq. ft  
Counted as living area: Yes

Heated: Yes  
Finished: Yes  
Enclosed: Yes  
Contiguous: Yes  
Permitted: Yes  
Wet space: No  
Addition: No  
Conversion: No

**16** Floor 1 - Dining Area



Dimensions: 10'8" x 12'0"  
Area: 119 sq. ft  
Counted as living area: Yes

Heated: Yes  
Finished: Yes  
Enclosed: Yes  
Contiguous: Yes  
Permitted: Yes  
Wet space: No  
Addition: No  
Conversion: No

**17** Floor 1 - Screened Porch



Dimensions: 12'8" x 13'1"  
Area: 155 sq. ft  
Counted as living area: No

Heated: No  
Finished: Yes  
Enclosed: No  
Contiguous: Yes  
Permitted: Yes  
Wet space: No  
Addition: No  
Conversion: No