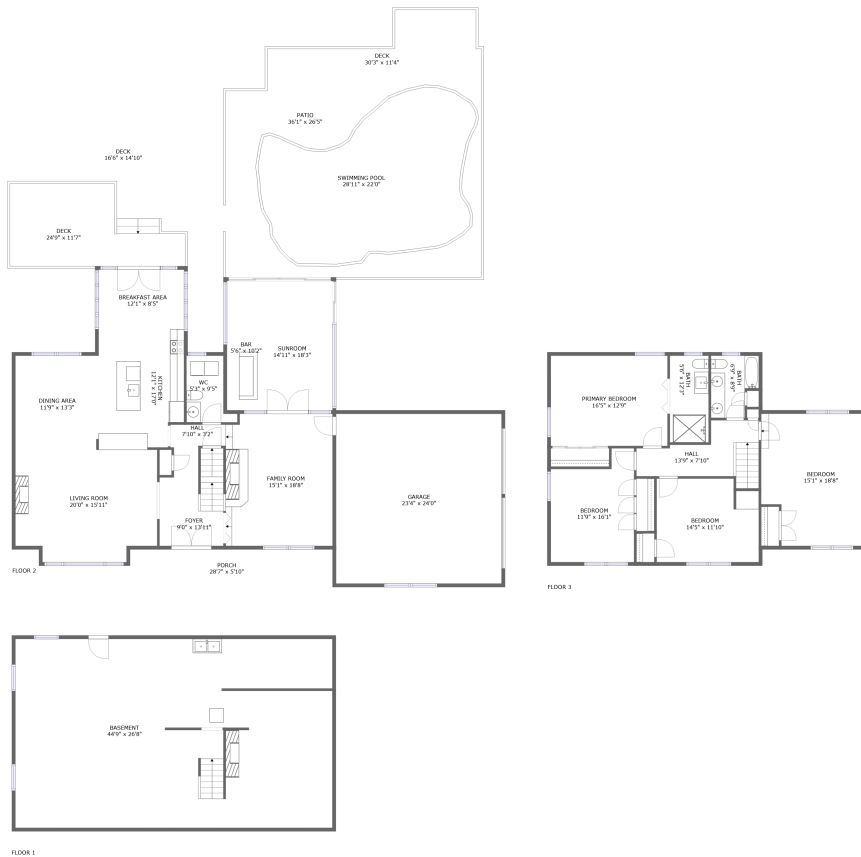


5673 Club Lane, Cave Spring, Roanoke, Roanoke County, Virginia, United States, 24018

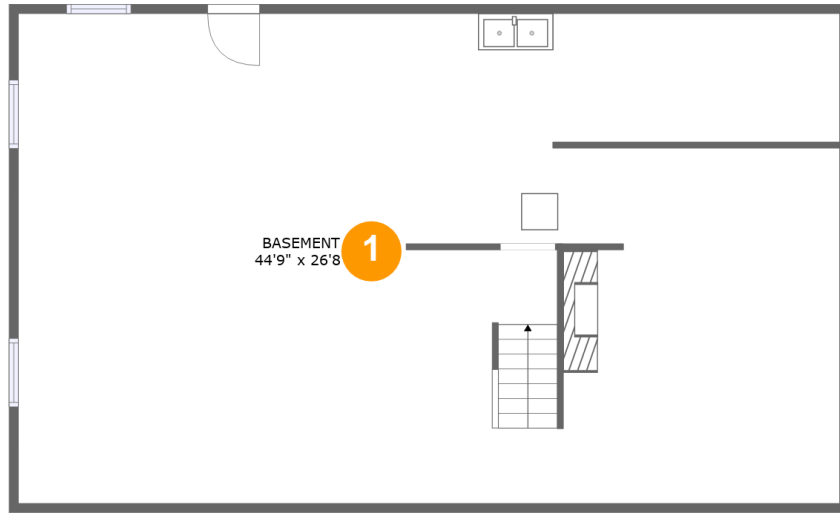


Property Summary

1 garages **4** bedrooms **2** bathrooms **1** half baths

3 floors **2,851** Gross Living Area sqft **5,895** total sqft

5673 Club Lane, Cave Spring, Roanoke, Roanoke County, Virginia, United States, 24018



Room Dimensions

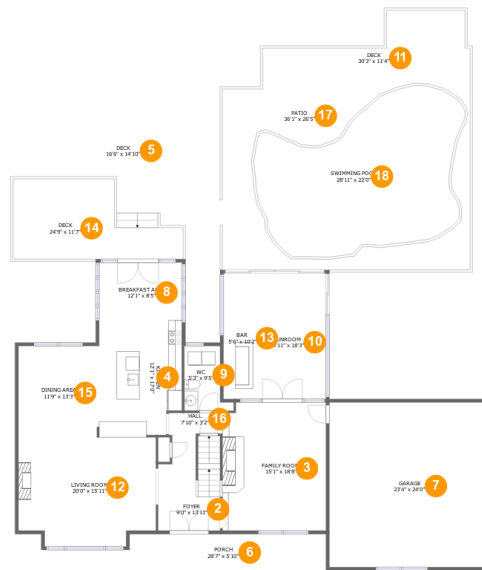
Floor 1

Total sqft: 1266

Living area: 0

#	Room name	Dimensions	Area (sqft)	Counted as Living Area
1	Basement	44'9" x 26'8"	1188 sq. ft	No

5673 Club Lane, Cave Spring, Roanoke, Roanoke County, Virginia, United States, 24018



Room Dimensions

Floor 2

Total sqft: 3410

Living area: 1632

#	Room name	Dimensions	Area (sqft)	Counted as Living Area
2	Foyer	9'0" x 13'11"	120 sq. ft	Yes
3	Family Room	15'1" x 18'8"	278 sq. ft	Yes
4	Kitchen	12'1" x 17'0"	196 sq. ft	Yes
5	Deck	16'6" x 14'10"	175 sq. ft	No
6	Porch	28'7" x 5'10"	166 sq. ft	No
7	Garage	23'4" x 24'0"	560 sq. ft	No
8	Breakfast Area	12'1" x 8'5"	102 sq. ft	Yes
9	Wc	5'3" x 9'5"	51 sq. ft	Yes
10	Sunroom	14'11" x 18'3"	216 sq. ft	Yes
11	Deck	30'3" x 11'4"	236 sq. ft	No
12	Living Room	20'0" x 15'11"	299 sq. ft	Yes

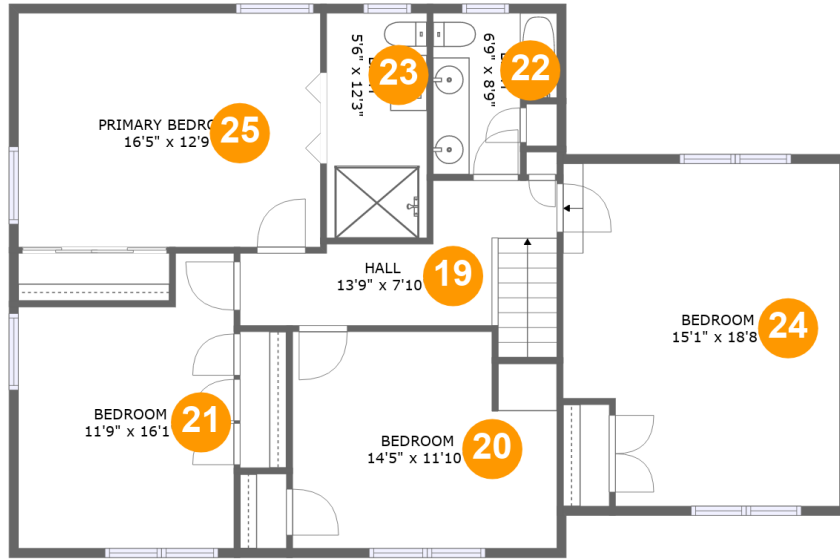
Scan captured on Fri, 20 Sep 2024 20:59:21 GMT

Information is calculated by CubiCasa technology; deemed highly reliable but not guaranteed.

**5673 Club Lane, Cave Spring, Roanoke, Roanoke
County, Virginia, United States, 24018**

#	Room name	Dimensions	Area (sqft)	Counted as Living Area
13	Bar	5'6" x 10'2"	56 sq. ft	Yes
14	Deck	24'9" x 11'7"	218 sq. ft	No
15	Dining Area	11'9" x 13'3"	156 sq. ft	Yes
16	Hall	7'10" x 3'2"	25 sq. ft	Yes
17	Patio	36'1" x 26'5"	384 sq. ft	No
18	Swimming Pool	28'11" x 22'0"	540 sq. ft	No

5673 Club Lane, Cave Spring, Roanoke, Roanoke County, Virginia, United States, 24018



Room Dimensions

Floor 3

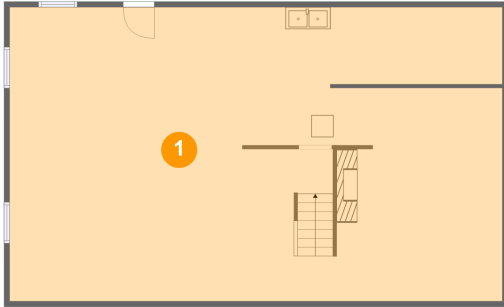
Total sqft: 1219

Living area: 1219

#	Room name	Dimensions	Area (sqft)	Counted as Living Area
19	Hall	13'9" x 7'10"	103 sq. ft	Yes
20	Bedroom	14'5" x 11'10"	163 sq. ft	Yes
21	Bedroom	11'9" x 16'1"	164 sq. ft	Yes
22	Bath	6'9" x 8'9"	51 sq. ft	Yes
23	Bath	5'6" x 12'3"	67 sq. ft	Yes
24	Bedroom	15'1" x 18'8"	265 sq. ft	Yes
25	Primary Bedroom	16'5" x 12'9"	210 sq. ft	Yes

5673 Club Lane, Cave Spring, Roanoke, Roanoke County, Virginia, United States, 24018

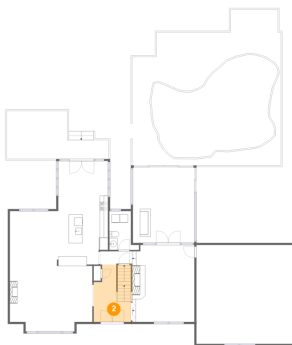
1 Floor 1 - Basement



Dimensions: 44'9" x 26'8"
Area: 1188 sq. ft
Counted as Living Area: No

Heated: Yes
Finished: No
Enclosed: Yes
Contiguous: Yes
Permitted: Yes
Wet Space: No
Addition: No
Conversion: No

2 Floor 2 - Foyer

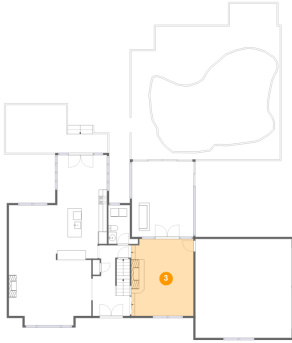


Dimensions: 9'0" x 13'11"
Area: 120 sq. ft
Counted as Living Area: Yes

Heated: Yes
Finished: Yes
Enclosed: Yes
Contiguous: Yes
Permitted: Yes
Wet Space: No
Addition: No
Conversion: No

5673 Club Lane, Cave Spring, Roanoke, Roanoke County, Virginia, United States, 24018

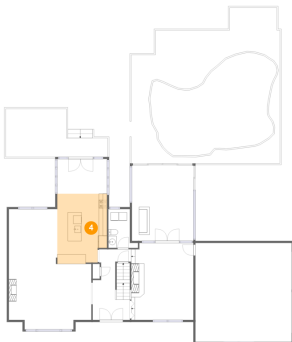
3 Floor 2 - Family Room



Dimensions: 15'1" x 18'8"
Area: 278 sq. ft
Counted as Living Area:
Yes

Heated: Yes
Finished: Yes
Enclosed: Yes
Contiguous:
Yes
Permitted: Yes
Wet Space: No
Addition: No
Conversion: No

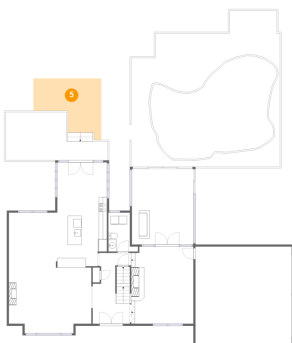
4 Floor 2 - Kitchen



Dimensions: 12'1" x 17'0"
Area: 196 sq. ft
Counted as Living Area:
Yes

Heated: Yes
Finished: Yes
Enclosed: Yes
Contiguous:
Yes
Permitted: Yes
Wet Space: No
Addition: No
Conversion: No

5 Floor 2 - Deck

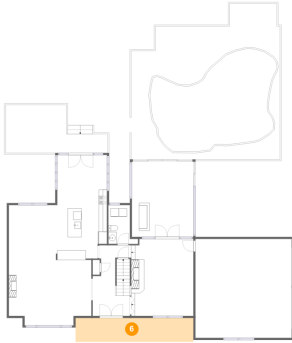


Dimensions: 16'6" x 14'10"
Area: 175 sq. ft
Counted as Living Area: No

Heated: No
Finished: Yes
Enclosed: No
Contiguous: Yes
Permitted: Yes
Wet Space: No
Addition: No
Conversion: No

5673 Club Lane, Cave Spring, Roanoke, Roanoke County, Virginia, United States, 24018

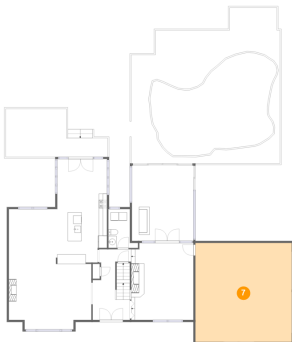
6 Floor 2 - Porch



Dimensions: 28'7" x 5'10"
Area: 166 sq. ft
Counted as Living Area: No

Heated: No
Finished: Yes
Enclosed: No
Contiguous: Yes
Permitted: Yes
Wet Space: No
Addition: No
Conversion: No

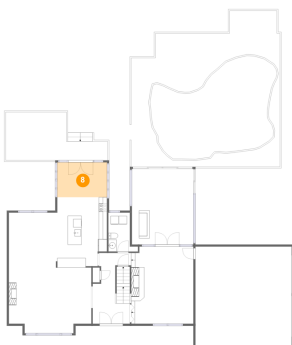
7 Floor 2 - Garage



Dimensions: 23'4" x 24'0"
Area: 560 sq. ft
Counted as Living Area: No

Heated: No
Finished: No
Enclosed: Yes
Contiguous: Yes
Permitted: Yes
Wet Space: No
Addition: No
Conversion: No

8 Floor 2 - Breakfast Area

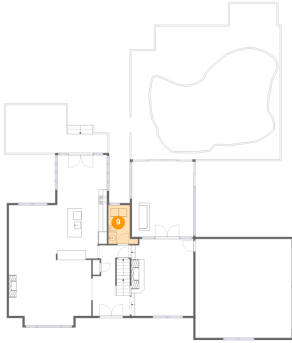


Dimensions: 12'1" x 8'5"
Area: 102 sq. ft
Counted as Living Area: Yes

Heated: Yes
Finished: Yes
Enclosed: Yes
Contiguous: Yes
Permitted: Yes
Wet Space: No
Addition: No
Conversion: No

5673 Club Lane, Cave Spring, Roanoke, Roanoke County, Virginia, United States, 24018

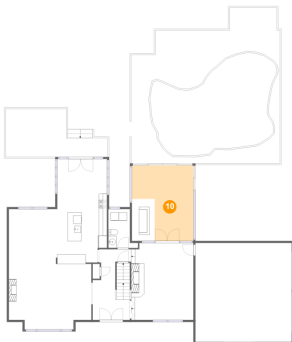
9 Floor 2 - Wc



Dimensions: 5'3" x 9'5"
Area: 51 sq. ft
Counted as Living Area:
Yes

Heated: Yes
Finished: Yes
Enclosed: Yes
Contiguous:
Yes
Permitted: Yes
Wet Space: Yes
Addition: No
Conversion: No

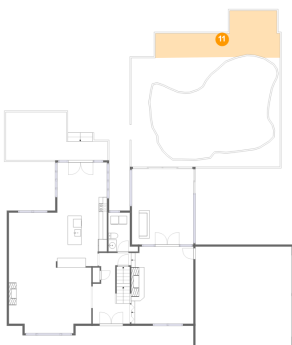
10 Floor 2 - Sunroom



Dimensions: 14'11" x 18'3"
Area: 216 sq. ft
Counted as Living Area:
Yes

Heated: Yes
Finished: Yes
Enclosed: Yes
Contiguous:
Yes
Permitted: Yes
Wet Space: No
Addition: No
Conversion: No

11 Floor 2 - Deck

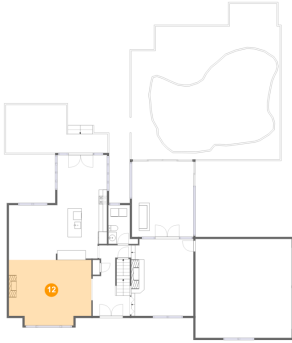


Dimensions: 30'3" x 11'4"
Area: 236 sq. ft
Counted as Living Area: No

Heated: No
Finished: Yes
Enclosed: No
Contiguous: Yes
Permitted: Yes
Wet Space: No
Addition: No
Conversion: No

5673 Club Lane, Cave Spring, Roanoke, Roanoke County, Virginia, United States, 24018

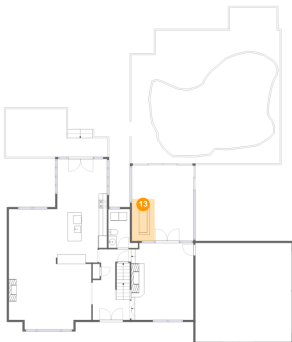
12 Floor 2 - Living Room



Dimensions: 20'0" x 15'11"
Area: 299 sq. ft
Counted as Living Area:
Yes

Heated: Yes
Finished: Yes
Enclosed: Yes
Contiguous:
Yes
Permitted: Yes
Wet Space: No
Addition: No
Conversion: No

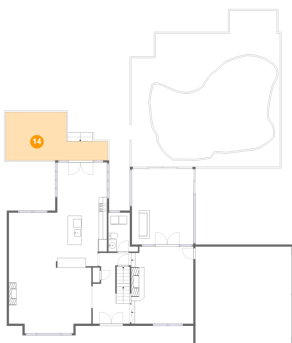
13 Floor 2 - Bar



Dimensions: 5'6" x 10'2"
Area: 56 sq. ft
Counted as Living Area:
Yes

Heated: Yes
Finished: Yes
Enclosed: Yes
Contiguous:
Yes
Permitted: Yes
Wet Space: No
Addition: No
Conversion: No

14 Floor 2 - Deck

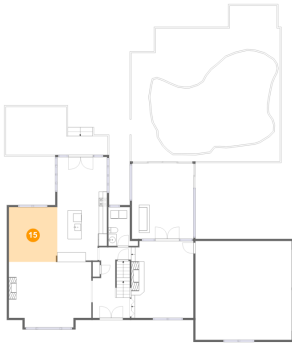


Dimensions: 24'9" x 11'7"
Area: 218 sq. ft
Counted as Living Area: No

Heated: No
Finished: Yes
Enclosed: No
Contiguous: Yes
Permitted: Yes
Wet Space: No
Addition: No
Conversion: No

5673 Club Lane, Cave Spring, Roanoke, Roanoke County, Virginia, United States, 24018

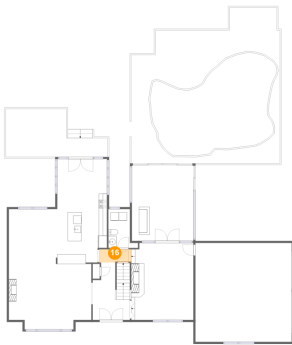
15 Floor 2 - Dining Area



Dimensions: 11'9" x 13'3"
Area: 156 sq. ft
Counted as Living Area:
Yes

Heated: Yes
Finished: Yes
Enclosed: Yes
Contiguous:
Yes
Permitted: Yes
Wet Space: No
Addition: No
Conversion: No

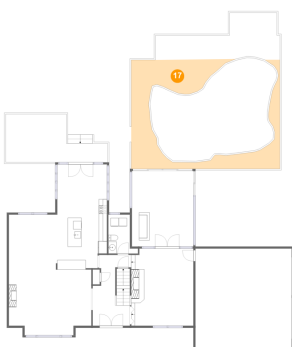
16 Floor 2 - Hall



Dimensions: 7'10" x 3'2"
Area: 25 sq. ft
Counted as Living Area:
Yes

Heated: Yes
Finished: Yes
Enclosed: Yes
Contiguous:
Yes
Permitted: Yes
Wet Space: No
Addition: No
Conversion: No

17 Floor 2 - Patio

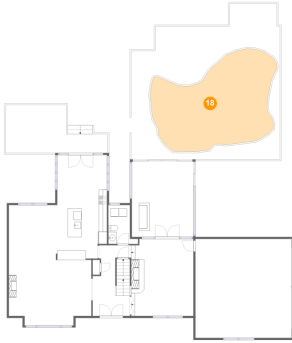


Dimensions: 36'1" x 26'5"
Area: 384 sq. ft
Counted as Living Area: No

Heated: No
Finished: Yes
Enclosed: No
Contiguous: Yes
Permitted: Yes
Wet Space: No
Addition: No
Conversion: No

5673 Club Lane, Cave Spring, Roanoke, Roanoke County, Virginia, United States, 24018

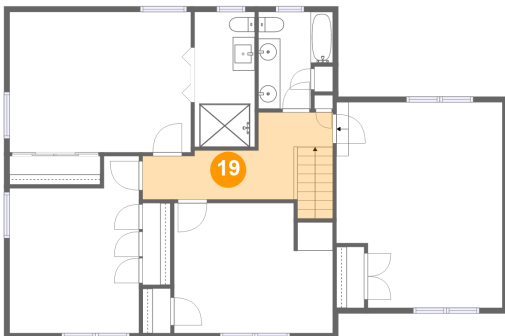
18 Floor 2 - Swimming Pool



Dimensions: 28'11" x 22'0"
Area: 540 sq. ft
Counted as Living Area: No

Heated: No
Finished: No
Enclosed: No
Contiguous: Yes
Permitted: No
Wet Space: No
Addition: No
Conversion: No

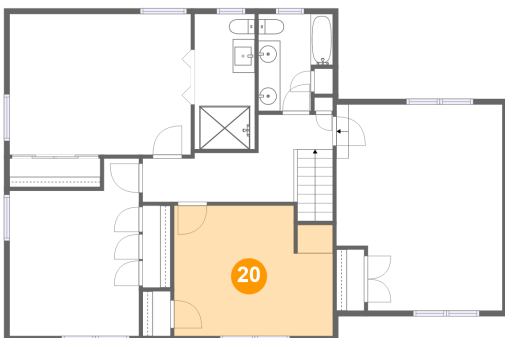
19 Floor 3 - Hall



Dimensions: 13'9" x 7'10"
Area: 103 sq. ft
Counted as Living Area: Yes

Heated: Yes
Finished: Yes
Enclosed: Yes
Contiguous: Yes
Permitted: Yes
Wet Space: No
Addition: No
Conversion: No

20 Floor 3 - Bedroom

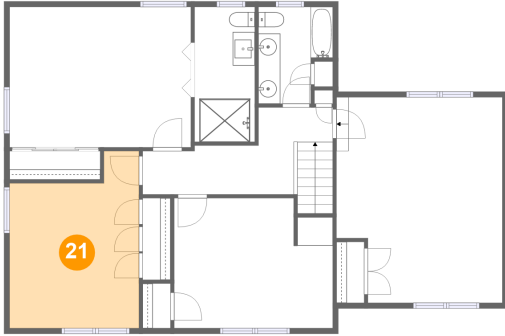


Dimensions: 14'5" x 11'10"
Area: 163 sq. ft
Counted as Living Area: Yes

Heated: Yes
Finished: Yes
Enclosed: Yes
Contiguous: Yes
Permitted: Yes
Wet Space: No
Addition: No
Conversion: No

5673 Club Lane, Cave Spring, Roanoke, Roanoke County, Virginia, United States, 24018

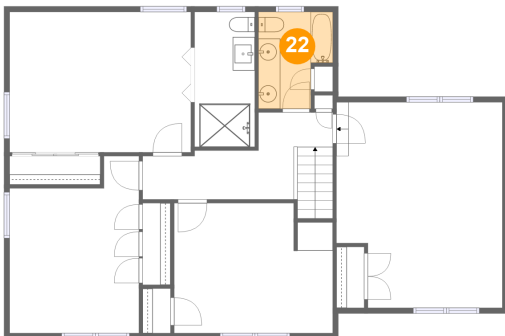
21 Floor 3 - Bedroom



Dimensions: 11'9" x 16'1"
Area: 164 sq. ft
Counted as Living Area:
Yes

Heated: Yes
Finished: Yes
Enclosed: Yes
Contiguous:
Yes
Permitted: Yes
Wet Space: No
Addition: No
Conversion: No

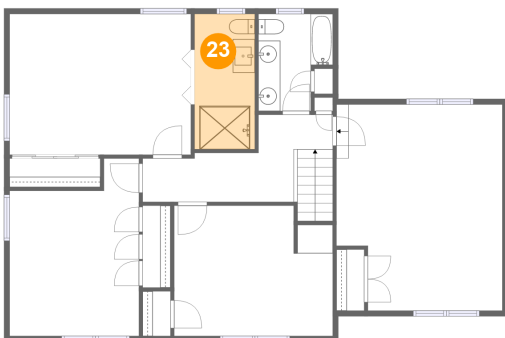
22 Floor 3 - Bath



Dimensions: 6'9" x 8'9"
Area: 51 sq. ft
Counted as Living Area:
Yes

Heated: Yes
Finished: Yes
Enclosed: Yes
Contiguous:
Yes
Permitted: Yes
Wet Space: Yes
Addition: No
Conversion: No

23 Floor 3 - Bath

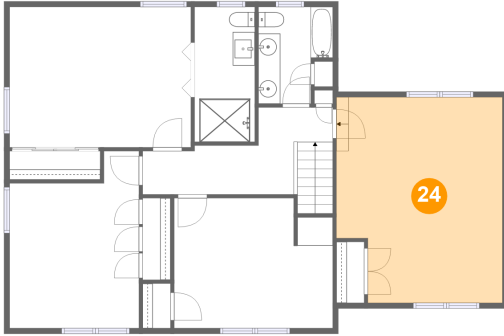


Dimensions: 5'6" x 12'3"
Area: 67 sq. ft
Counted as Living Area:
Yes

Heated: Yes
Finished: Yes
Enclosed: Yes
Contiguous:
Yes
Permitted: Yes
Wet Space: Yes
Addition: No
Conversion: No

5673 Club Lane, Cave Spring, Roanoke, Roanoke County, Virginia, United States, 24018

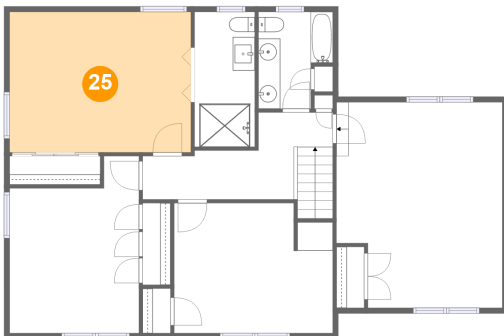
24 Floor 3 - Bedroom



Dimensions: 15'1" x 18'8"
Area: 265 sq. ft
Counted as Living Area:
Yes

Heated: Yes
Finished: Yes
Enclosed: Yes
Contiguous:
Yes
Permitted: Yes
Wet Space: No
Addition: No
Conversion: No

25 Floor 3 - Primary Bedroom



Dimensions: 16'5" x 12'9"
Area: 210 sq. ft
Counted as Living Area:
Yes

Heated: Yes
Finished: Yes
Enclosed: Yes
Contiguous:
Yes
Permitted: Yes
Wet Space: No
Addition: No
Conversion: No