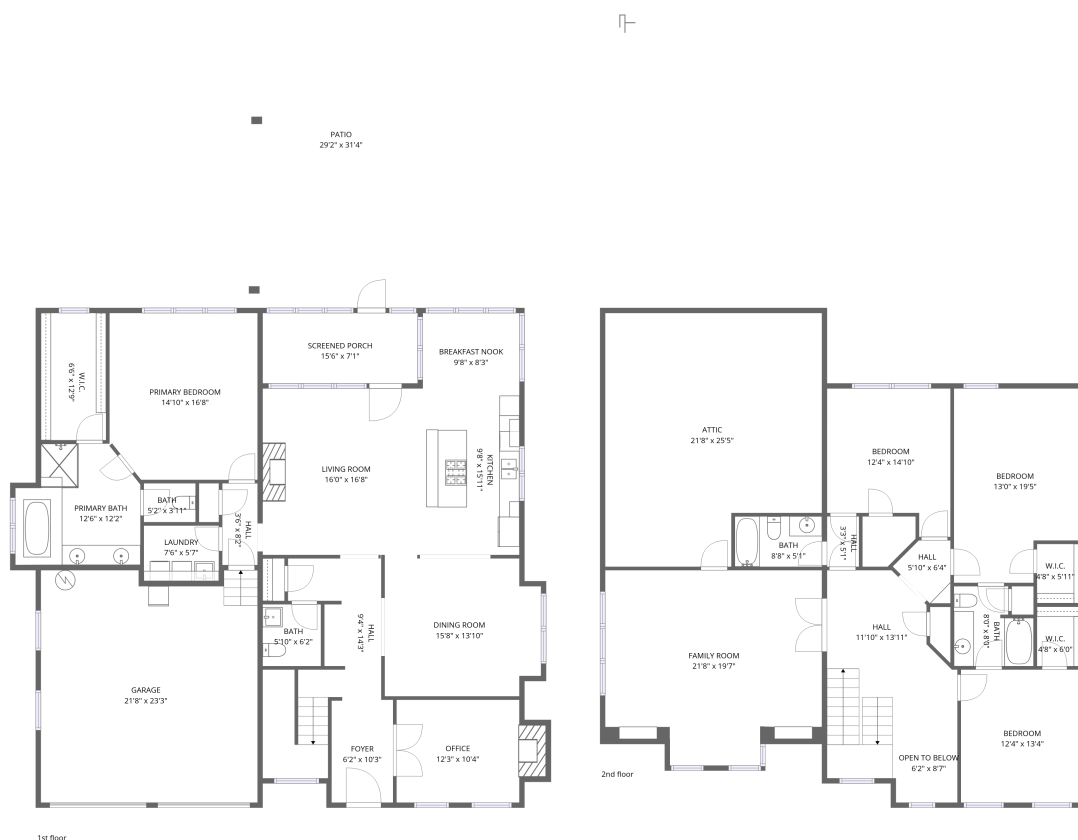


Home data report

2620 Persimmon Ridge, Loudon, TN, US



Total Area: 3188 sq. ft

1st Floor: 1730 sq. ft, 2nd Floor: 1458 sq. ft

Excluded: Garage 490 sq. ft, Screened porch 109 sq. ft, Patio 716 sq. ft, Fireplace 16 sq. ft, Low ceiling 278 sq. ft, Attic 224 sq. ft, Open to below 53 sq. ft, Walls: 241 sq. ft

Property summary

 **2** Floors

 **4** Bedrooms

 **3** Bathrooms

Home data report

2620 Persimmon Ridge,Loudon,TN,US

 **1**
Half baths

 **1**
Garages

Home data report

2620 Persimmon Ridge, Loudon, TN, US



Room dimensions

Floor 1

Total: 1730sqft

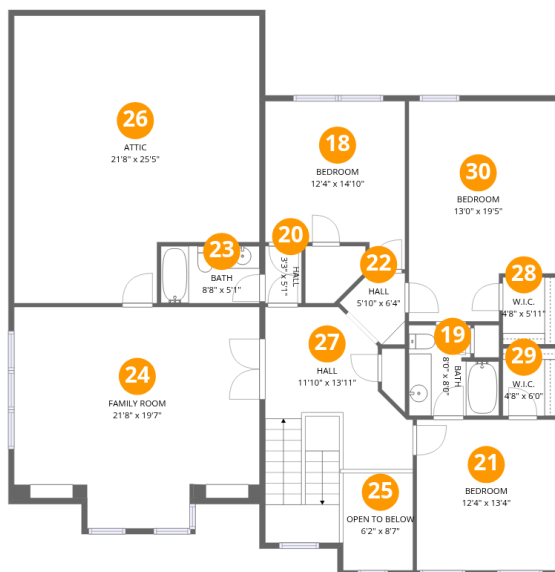
Excluded: 1331sqft

#		Dimensions	sqft	Counted as living area
1	Laundry	7'6" x 5'7"	42 sq. ft	Yes
2	Primary Bath	12'6" x 12'2"	134 sq. ft	Yes
3	W.I.C.	6'6" x 12'9"	83 sq. ft	Yes
4	Primary Bedroom	14'10" x 16'8"	241 sq. ft	Yes
5	Bath	5'10" x 6'2"	36 sq. ft	Yes
6	Foyer	6'2" x 10'3"	63 sq. ft	Yes
7	Dining Room	15'8" x 13'10"	207 sq. ft	Yes
8	Hall	9'4" x 14'3"	103 sq. ft	Yes
9	Hall	3'6" x 8'2"	29 sq. ft	Yes
10	Living Room	16'0" x 16'8"	267 sq. ft	Yes
11	Breakfast Nook	9'8" x 8'3"	80 sq. ft	Yes

Home data report

2620 Persimmon Ridge,Loudon,TN,US

#		Dimensions	sqft	Counted as living area
12	Patio	29'2" x 31'4"	716 sq. ft	No
13	Screened Porch	15'6" x 7'1"	109 sq. ft	No
14	Kitchen	9'8" x 15'11"	154 sq. ft	Yes
15	Bath	5'2" x 3'11"	20 sq. ft	Yes
16	Garage	21'8" x 23'3"	490 sq. ft	No
17	Office	12'3" x 10'4"	140 sq. ft	Yes



Room dimensions

Floor 2

Total: 1458 sqft

Excluded: 555 sqft

#		Dimensions	sqft	Counted as living area
18	Bedroom	12'4" x 14'10"	162 sq. ft	Yes
19	Bath	8'0" x 8'0"	55 sq. ft	Yes
20	Hall	3'3" x 5'1"	16 sq. ft	Yes
21	Bedroom	12'4" x 13'4"	164 sq. ft	Yes
22	Hall	5'10" x 6'4"	26 sq. ft	Yes
23	Bath	8'8" x 5'1"	44 sq. ft	Yes
24	Family Room	21'8" x 19'7"	390 sq. ft	Yes
25	Open To Below	6'2" x 8'7"	53 sq. ft	No
26	Attic	21'8" x 25'5"	224 sq. ft	No
27	Hall	11'10" x 13'11"	200 sq. ft	Yes
28	W.I.C.	4'8" x 5'11"	28 sq. ft	Yes

Home data report

2620 Persimmon Ridge,Loudon,TN,US

#		Dimensions	sqft	Counted as living area
29	W.I.C.	4'8" x 6'0"	28 sq. ft	Yes
30	Bedroom	13'0" x 19'5"	231 sq. ft	Yes

1 Floor 1 - Laundry



Dimensions: 7'6" x 5'7"
Area: 42 sq. ft
Counted as living area: Yes

Heated: Yes
Finished: Yes
Enclosed: Yes
Contiguous: Yes
Permitted: Yes
Wet space: No
Addition: No
Conversion: No

2 Floor 1 - Primary Bath



Dimensions: 12'6" x 12'2"
Area: 134 sq. ft
Counted as living area: Yes

Heated: Yes
Finished: Yes
Enclosed: Yes
Contiguous: Yes
Permitted: Yes
Wet space: Yes
Addition: No
Conversion: No

3 Floor 1 - W.I.C.



Dimensions: 6'6" x 12'9"
Area: 83 sq. ft
Counted as living area: Yes

Heated: Yes
Finished: Yes
Enclosed: Yes
Contiguous: Yes
Permitted: Yes
Wet space: No
Addition: No
Conversion: No

4 Floor 1 - Primary Bedroom



Dimensions: 14'10" x 16'8"
Area: 241 sq. ft
Counted as living area: Yes

Heated: Yes
Finished: Yes
Enclosed: Yes
Contiguous: Yes
Permitted: Yes
Wet space: No
Addition: No
Conversion: No

5 Floor 1 - Bath



Dimensions: 5'10" x 6'2"
Area: 36 sq. ft
Counted as living area: Yes

Heated: Yes
Finished: Yes
Enclosed: Yes
Contiguous: Yes
Permitted: Yes
Wet space: Yes
Addition: No
Conversion: No

6 Floor 1 - Foyer



Dimensions: 6'2" x 10'3"
Area: 63 sq. ft
Counted as living area: Yes

Heated: Yes
Finished: Yes
Enclosed: Yes
Contiguous: Yes
Permitted: Yes
Wet space: No
Addition: No
Conversion: No

7 Floor 1 - Dining Room



Dimensions: 15'8" x 13'10"
Area: 207 sq. ft
Counted as living area: Yes

Heated: Yes
Finished: Yes
Enclosed: Yes
Contiguous: Yes
Permitted: Yes
Wet space: No
Addition: No
Conversion: No

8 Floor 1 - Hall



Dimensions: 9'4" x 14'3"
Area: 103 sq. ft
Counted as living area: Yes

Heated: Yes
Finished: Yes
Enclosed: Yes
Contiguous: Yes
Permitted: Yes
Wet space: No
Addition: No
Conversion: No

9 Floor 1 - Hall



Dimensions: 3'6" x 8'2"
Area: 29 sq. ft
Counted as living area: Yes

Heated: Yes
Finished: Yes
Enclosed: Yes
Contiguous: Yes
Permitted: Yes
Wet space: No
Addition: No
Conversion: No

10 Floor 1 - Living Room



Dimensions: 16'0" x 16'8"
Area: 267 sq. ft
Counted as living area: Yes

Heated: Yes
Finished: Yes
Enclosed: Yes
Contiguous: Yes
Permitted: Yes
Wet space: No
Addition: No
Conversion: No

11 Floor 1 - Breakfast Nook



Dimensions: 9'8" x 8'3"
Area: 80 sq. ft
Counted as living area: Yes

Heated: Yes
Finished: Yes
Enclosed: Yes
Contiguous: Yes
Permitted: Yes
Wet space: No
Addition: No
Conversion: No

12 Floor 1 - Patio



Dimensions: 29'2" x 31'4"
Area: 716 sq. ft
Counted as living area: No

Heated: No
Finished: No
Enclosed: No
Contiguous: Yes
Permitted: Yes
Wet space: No
Addition: No
Conversion: No

13 Floor 1 - Screened Porch



Dimensions: 15'6" x 7'1"
Area: 109 sq. ft
Counted as living area: No

Heated: No
Finished: No
Enclosed: No
Contiguous: Yes
Permitted: Yes
Wet space: No
Addition: No
Conversion: No

14 Floor 1 - Kitchen



Dimensions: 9'8" x 15'11"
Area: 154 sq. ft
Counted as living area: Yes

Heated: Yes
Finished: Yes
Enclosed: Yes
Contiguous: Yes
Permitted: Yes
Wet space: No
Addition: No
Conversion: No

15 Floor 1 - Bath



Dimensions: 5'2" x 3'11"
Area: 20 sq. ft
Counted as living area: Yes

Heated: Yes
Finished: Yes
Enclosed: Yes
Contiguous: Yes
Permitted: Yes
Wet space: Yes
Addition: No
Conversion: No

16 Floor 1 - Garage



Dimensions: 21'8" x 23'3"
Area: 490 sq. ft
Counted as living area: No

Heated: No
Finished: No
Enclosed: Yes
Contiguous: Yes
Permitted: Yes
Wet space: No
Addition: No
Conversion: No

17 Floor 1 - Office



Dimensions: 12'3" x 10'4"
Area: 140 sq. ft
Counted as living area: Yes

Heated: Yes
Finished: Yes
Enclosed: Yes
Contiguous: Yes
Permitted: Yes
Wet space: No
Addition: No
Conversion: No

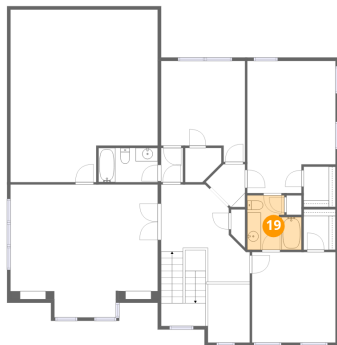
18 Floor 2 - Bedroom



Dimensions: 12'4" x 14'10"
Area: 162 sq. ft
Counted as living area: Yes

Heated: Yes
Finished: Yes
Enclosed: Yes
Contiguous: Yes
Permitted: Yes
Wet space: No
Addition: No
Conversion: No

19 Floor 2 - Bath



Dimensions: 8'0" x 8'0"
Area: 55 sq. ft
Counted as living area: Yes

Heated: Yes
Finished: Yes
Enclosed: Yes
Contiguous: Yes
Permitted: Yes
Wet space: Yes
Addition: No
Conversion: No

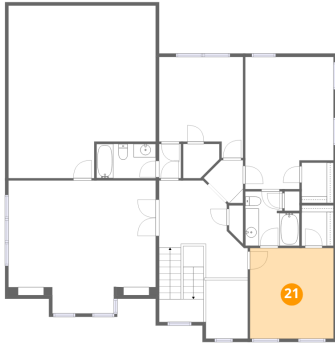
20 Floor 2 - Hall



Dimensions: 3'3" x 5'1"
Area: 16 sq. ft
Counted as living area: Yes

Heated: Yes
Finished: Yes
Enclosed: Yes
Contiguous: Yes
Permitted: Yes
Wet space: No
Addition: No
Conversion: No

21 Floor 2 - Bedroom



Dimensions: 12'4" x 13'4"
Area: 164 sq. ft
Counted as living area: Yes

Heated: Yes
Finished: Yes
Enclosed: Yes
Contiguous: Yes
Permitted: Yes
Wet space: No
Addition: No
Conversion: No

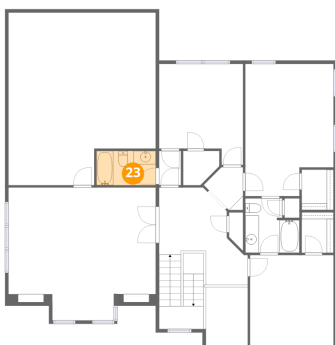
22 Floor 2 - Hall



Dimensions: 5'10" x 6'4"
Area: 26 sq. ft
Counted as living area: Yes

Heated: Yes
Finished: Yes
Enclosed: Yes
Contiguous: Yes
Permitted: Yes
Wet space: No
Addition: No
Conversion: No

23 Floor 2 - Bath



Dimensions: 8'8" x 5'1"
Area: 44 sq. ft
Counted as living area: Yes

Heated: Yes
Finished: Yes
Enclosed: Yes
Contiguous: Yes
Permitted: Yes
Wet space: Yes
Addition: No
Conversion: No

24 Floor 2 - Family Room



Dimensions: 21'8" x 19'7"
Area: 390 sq. ft
Counted as living area: Yes

Heated: Yes
Finished: Yes
Enclosed: Yes
Contiguous: Yes
Permitted: Yes
Wet space: No
Addition: No
Conversion: No

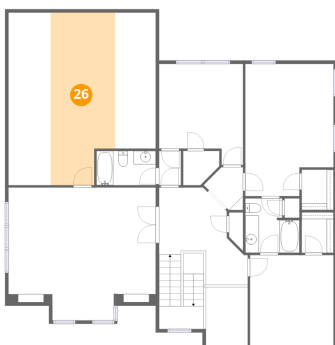
25 Floor 2 - Open To Below



Dimensions: 6'2" x 8'7"
Area: 53 sq. ft
Counted as living area: No

Heated: No
Finished: No
Enclosed: No
Contiguous: Yes
Permitted: No
Wet space: No
Addition: No
Conversion: No

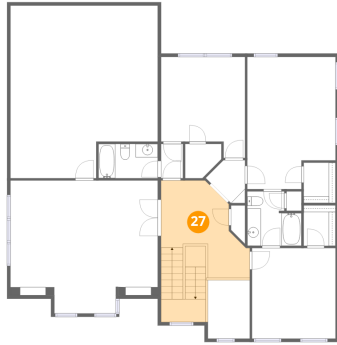
26 Floor 2 - Attic



Dimensions: 21'8" x 25'5"
Area: 224 sq. ft
Counted as living area: No

Heated: No
Finished: No
Enclosed: Yes
Contiguous: Yes
Permitted: Yes
Wet space: No
Addition: No
Conversion: No

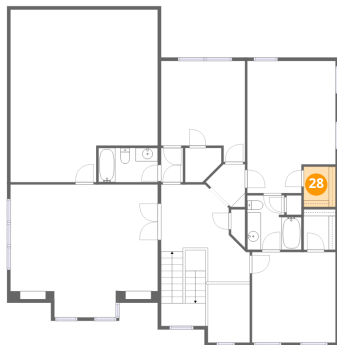
27 Floor 2 - Hall



Dimensions: 11'10" x 13'11"
Area: 200 sq. ft
Counted as living area: Yes

Heated: Yes
Finished: Yes
Enclosed: Yes
Contiguous: Yes
Permitted: Yes
Wet space: No
Addition: No
Conversion: No

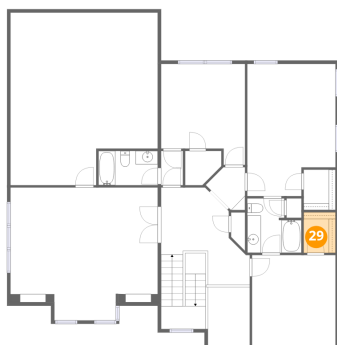
28 Floor 2 - W.I.C.



Dimensions: 4'8" x 5'11"
Area: 28 sq. ft
Counted as living area: Yes

Heated: Yes
Finished: Yes
Enclosed: Yes
Contiguous: Yes
Permitted: Yes
Wet space: No
Addition: No
Conversion: No

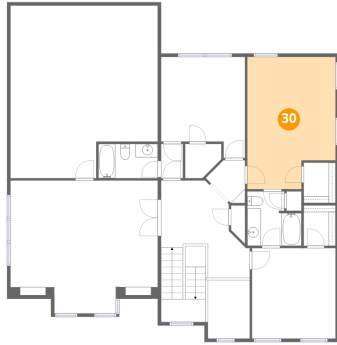
29 Floor 2 - W.I.C.



Dimensions: 4'8" x 6'0"
Area: 28 sq. ft
Counted as living area: Yes

Heated: Yes
Finished: Yes
Enclosed: Yes
Contiguous: Yes
Permitted: Yes
Wet space: No
Addition: No
Conversion: No

30 Floor 2 - Bedroom



Dimensions: 13'0" x 19'5"
Area: 231 sq. ft
Counted as living area: Yes

Heated: Yes
Finished: Yes
Enclosed: Yes
Contiguous: Yes
Permitted: Yes
Wet space: No
Addition: No
Conversion: No