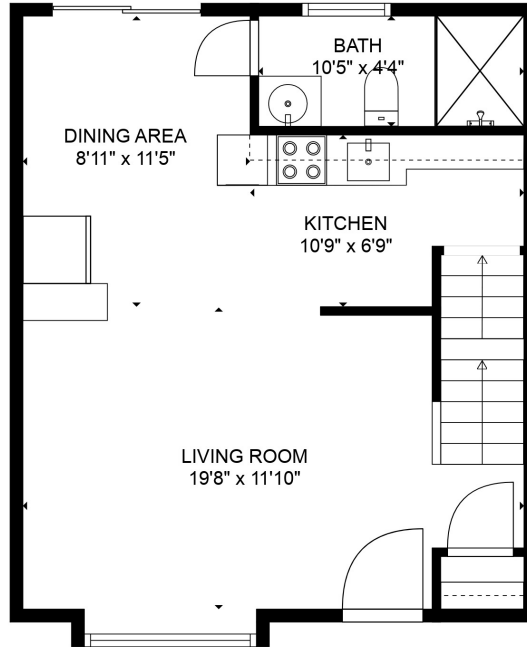
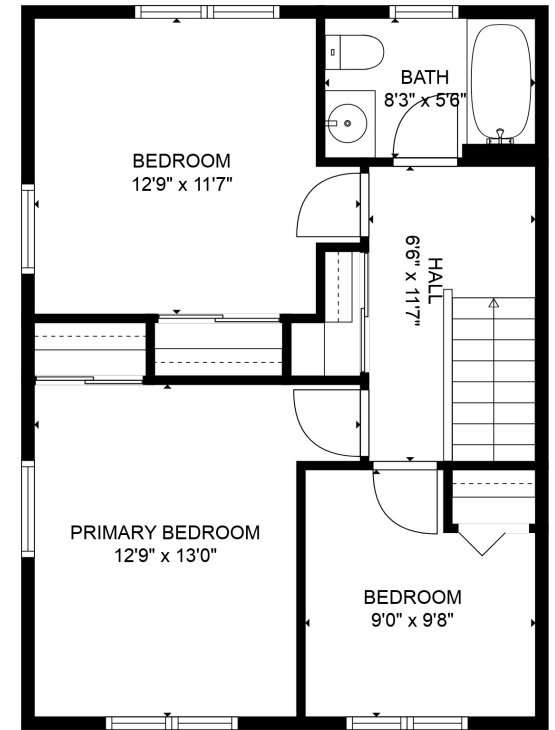


FLOOR 1



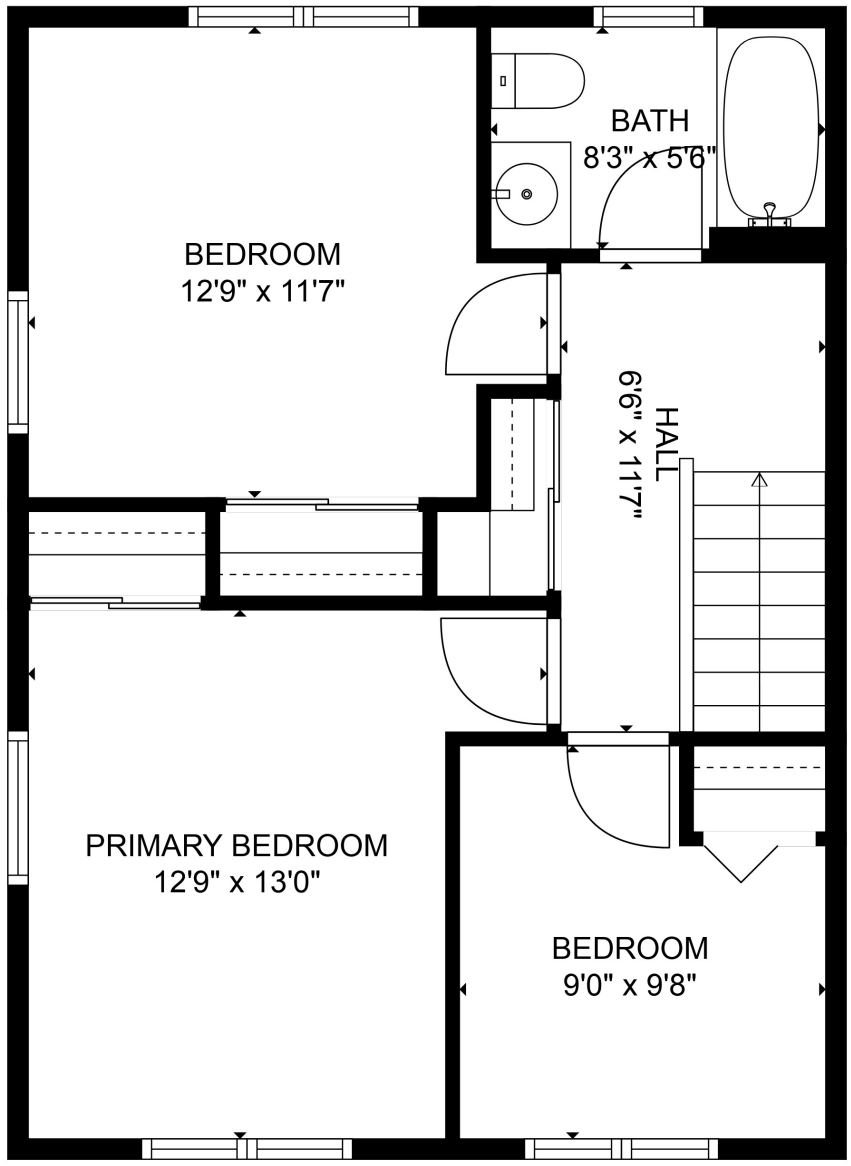
FLOOR 2



FLOOR 3

TOTAL: 1258 sq. ft
 BELOW GROUND: 262 sq. ft, FLOOR 2: 457 sq. ft, FLOOR 3: 539 sq. ft
 EXCLUDED AREAS: ELECTRICAL ROOM: 188 sq. ft, BAY WINDOW: 8 sq. ft

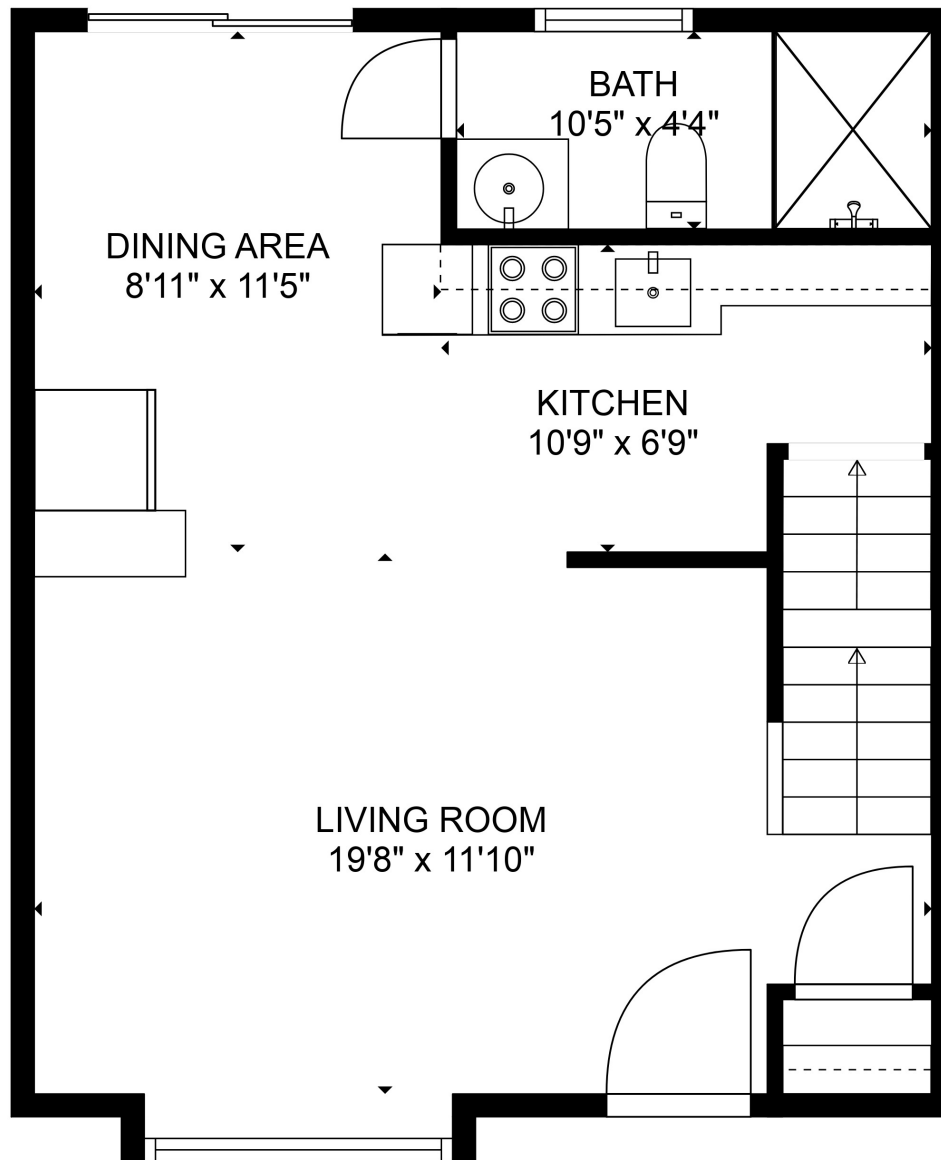
SIZES AND DIMENSIONS ARE APPROXIMATE, ACTUAL MAY VARY.



TOTAL: 1258 sq. ft

BELOW GROUND: 262 sq. ft, FLOOR 2: 457 sq. ft, FLOOR 3: 539 sq. ft
EXCLUDED AREAS: ELECTRICAL ROOM: 188 sq. ft, BAY WINDOW: 8 sq. ft

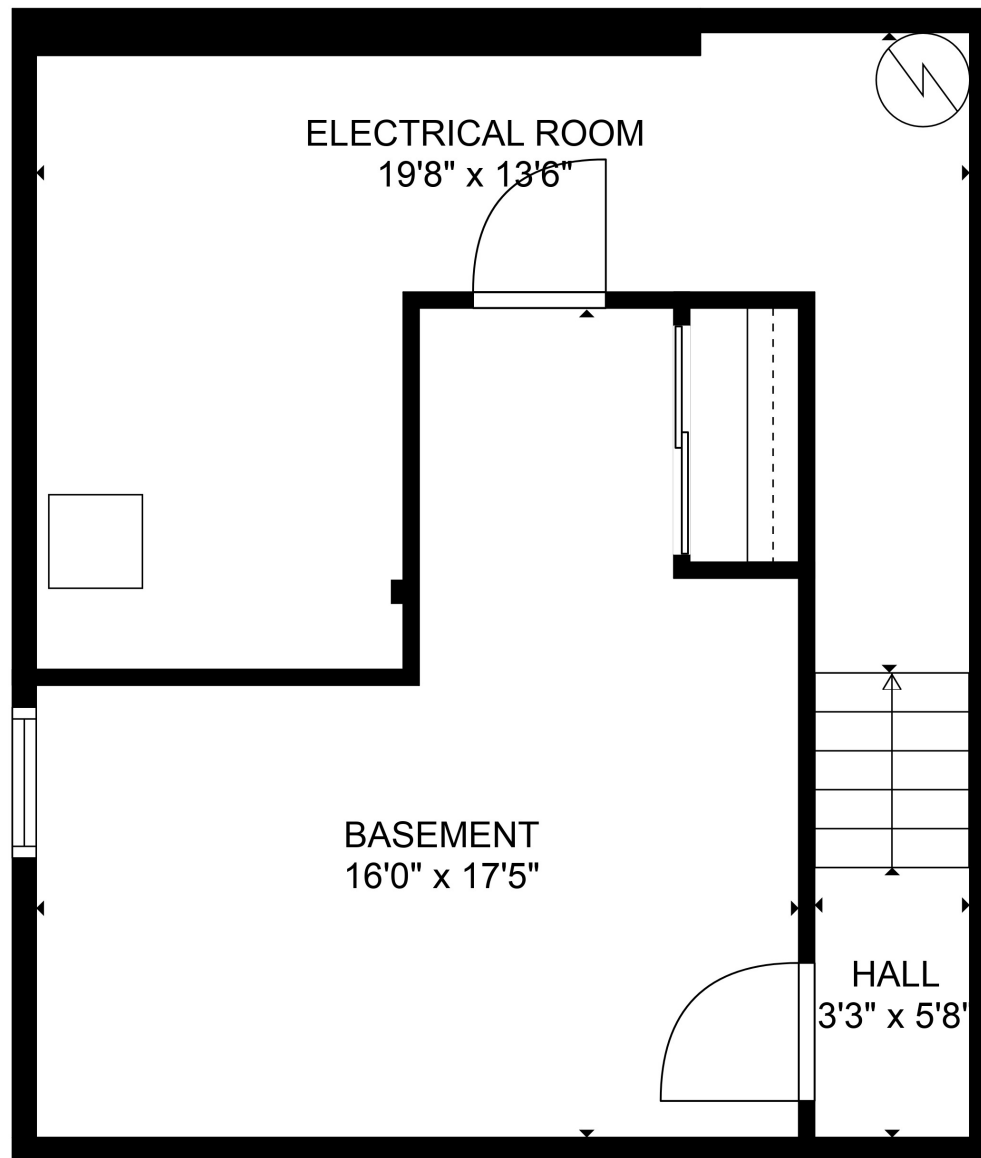
SIZES AND DIMENSIONS ARE APPROXIMATE, ACTUAL MAY VARY.



TOTAL: 1258 sq. ft

BELOW GROUND: 262 sq. ft, FLOOR 2: 457 sq. ft, FLOOR 3: 539 sq. ft
EXCLUDED AREAS: ELECTRICAL ROOM: 188 sq. ft, BAY WINDOW: 8 sq. ft

SIZES AND DIMENSIONS ARE APPROXIMATE, ACTUAL MAY VARY.



TOTAL: 1258 sq. ft
BELOW GROUND: 262 sq. ft, FLOOR 2: 457 sq. ft, FLOOR 3: 539 sq. ft
EXCLUDED AREAS: ELECTRICAL ROOM: 188 sq. ft, BAY WINDOW: 8 sq. ft

SIZES AND DIMENSIONS ARE APPROXIMATE, ACTUAL MAY VARY.