

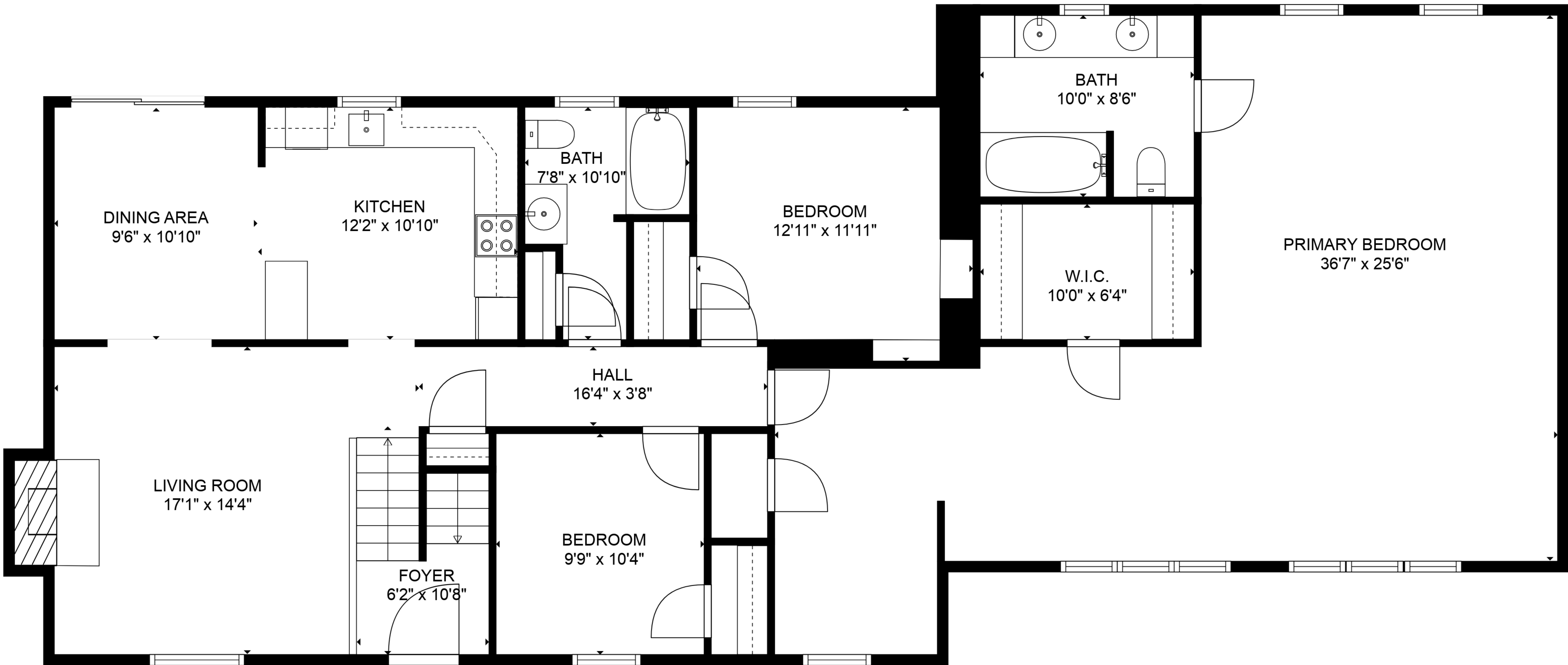
BASEMENT  
28'2" x 22'4"

BATH  
9'11" x 5'9"

ROOM  
13'4" x 10'3"

ROOM  
6'7" x 10'8"

ROOM  
21'2" x 11'8"



**TOTAL: 2430 sq. ft**

BELOW GROUND: 628 sq. ft, FLOOR 2: 1802 sq. ft

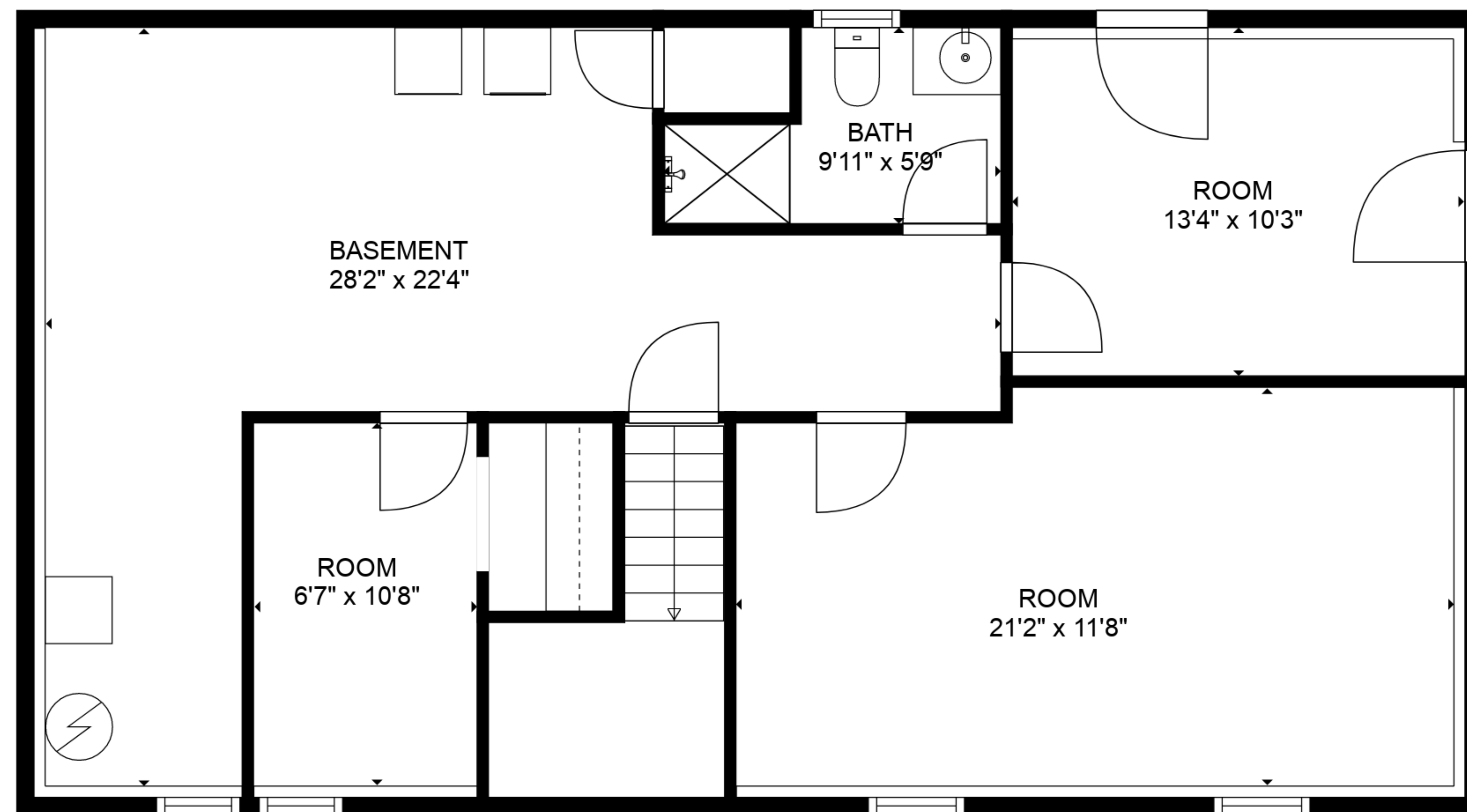
EXCLUDED AREAS: BASEMENT: 329 sq. ft, FIREPLACE: 8 sq. ft



Floor Plans are provided by HouseSnappers.com. Measurements are deemed highly reliable but not guaranteed.



FLOOR 2



FLOOR 1



**TOTAL: 2430 sq. ft**  
 BELOW GROUND: 628 sq. ft, FLOOR 2: 1802 sq. ft  
 EXCLUDED AREAS: BASEMENT: 329 sq. ft, FIREPLACE: 8 sq. ft

Floor Plans are provided by HouseSnappers.com. Measurements are deemed highly reliable but not guaranteed.