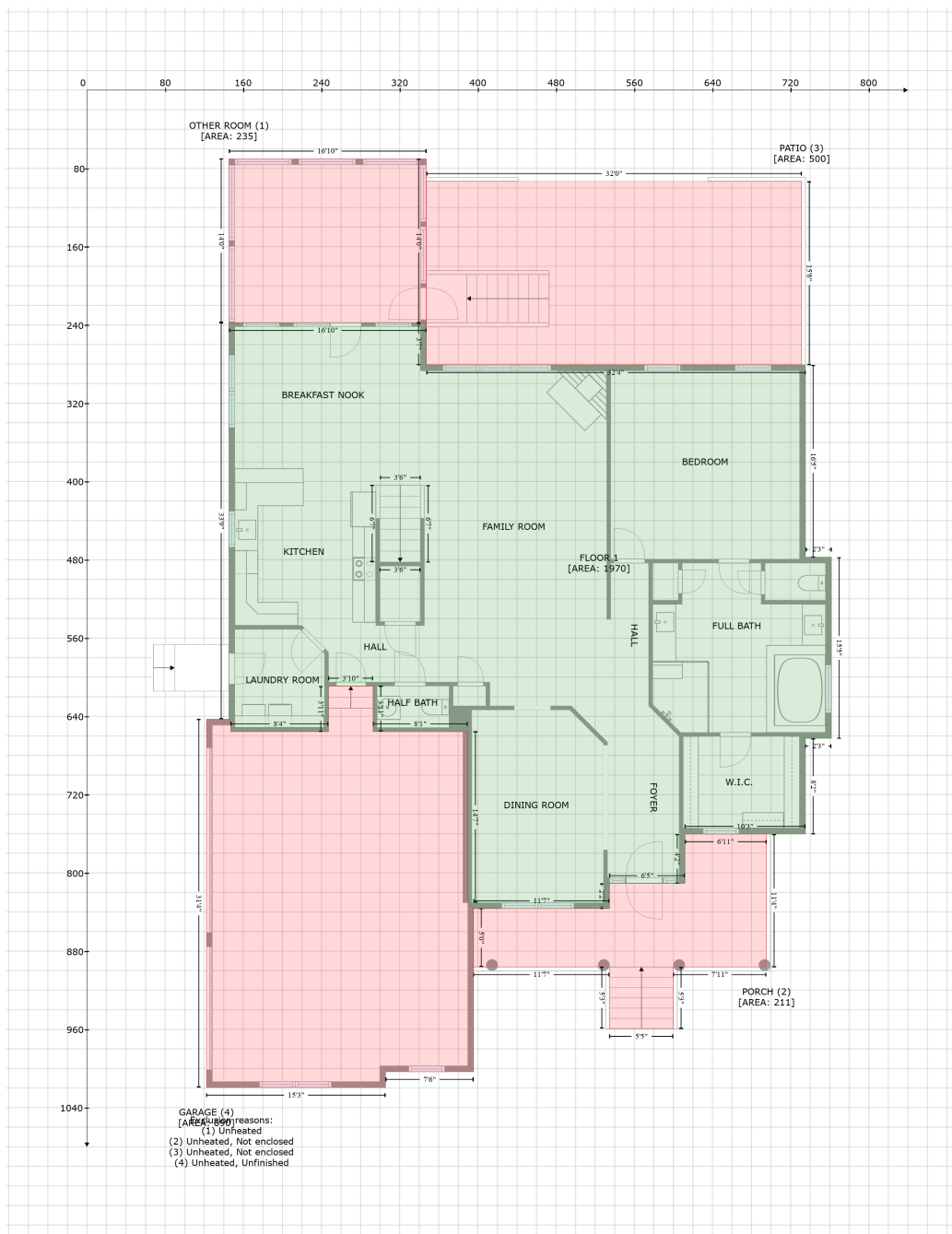


2717 Enville Court, Wake Forest, Wake County, North Carolina, United States, 27587

Gross Living Area: 3421 sq. ft



Space

Area (sq. ft)

Calculation Coordinate Polygon Area Algorithm using inches

FLOOR 1
(Living area)

1970

$$\begin{aligned}
 & -((347.2 + 347.2) * (237.8 - 280.9) + (347.2 + 735.2) * (280.9 - 280.9) + (735.2 + 735.2) * (280.9 - \\
 & 477.4) + (735.2 + 761.7) * (477.4 - 477.4) + (761.7 + 761.7) * (477.4 - 662.6) + (761.7 + 735.2) * \\
 & (662.6 - 662.6) + (735.2 + 735.2) * (662.6 - 760.4) + (735.2 + 611.9) * (760.4 - 760.4) + (611.9 + \\
 & 611.9) * (760.4 - 810.7) + (611.9 + 534.6) * (810.7 - 810.7) + (534.6 + 534.6) * (810.7 - 836.6) + \\
 & (534.6 + 395.6) * (836.6 - 836.6) + (395.6 + 389.6) * (836.6 - 830.6) + (389.6 + 389.6) * (830.6 - \\
 & 655.6) + (389.6 + 292.8) * (655.6 - 655.6) + (292.8 + 292.8) * (655.6 - 609.1) + (292.8 + 247.2) * \\
 & (609.1 - 609.1) + (247.2 + 247.2) * (609.1 - 655.6) + (247.2 + 147.3) * (655.6 - 655.6) + (147.3 +
 \end{aligned}$$

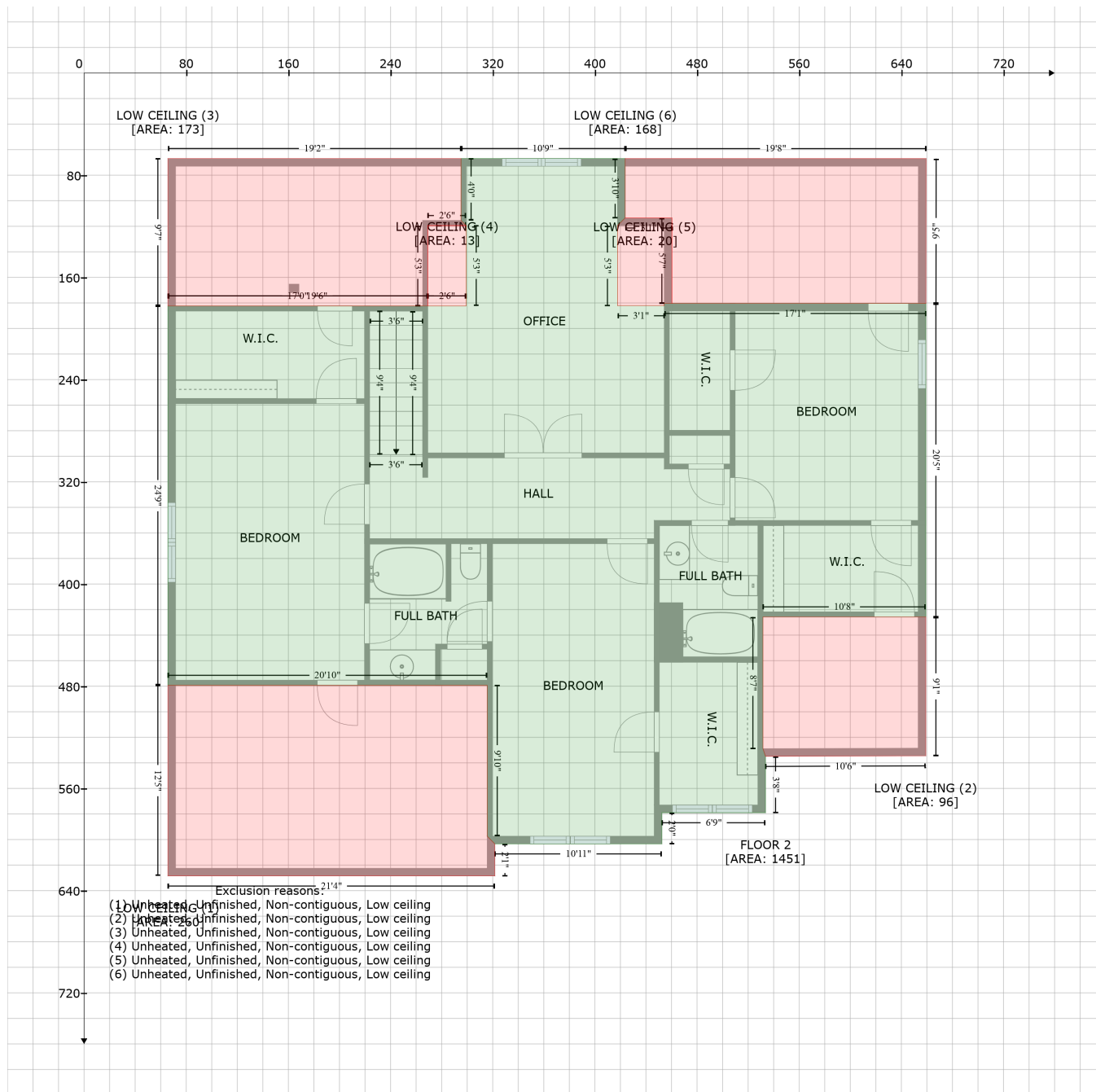
2717 Enville Court, Wake Forest, Wake County, North Carolina, United States, 27587

Gross Living Area: 3421 sq. ft

Space	Area (sq. ft)	Calculation <small>Coordinate Polygon Area Algorithm using inches</small>
		$147.3 * (655.6 - 649) + (147.3 + 145.3) * (649 - 643) + (145.3 + 145.3) * (643 - 237.8) + (145.3 + 347.2) * (237.8 - 237.8)) * 0.5 * 0.00694$
OTHER ROOM (Non-living area)	235	$-((347.2 + 347.2) * (70.3 - 237.8) + (347.2 + 145.3) * (237.8 - 237.8) + (145.3 + 145.3) * (237.8 - 70.3) + (145.3 + 347.2) * (70.3 - 70.3)) * 0.5 * 0.00694$
PORCH (Non-living area)	211	$-((695.2 + 695.2) * (760.4 - 896.2) + (695.2 + 600) * (896.2 - 896.2) + (600 + 600) * (896.2 - 959.3) + (600 + 534.7) * (959.3 - 959.3) + (534.7 + 534.7) * (959.3 - 896.2) + (534.7 + 395.6) * (896.2 - 896.2) + (395.6 + 395.6) * (896.2 - 836.6) + (395.6 + 534.6) * (836.6 - 836.6) + (534.6 + 534.6) * (836.6 - 810.7) + (534.6 + 611.9) * (810.7 - 810.7) + (611.9 + 611.9) * (810.7 - 760.4) + (611.9 + 695.2) * (760.4 - 760.4)) * 0.5 * 0.00694$
PATIO (Non-living area)	500	$-((731.2 + 731.2) * (93.2 - 280.9) + (731.2 + 347.2) * (280.9 - 280.9) + (347.2 + 347.2) * (280.9 - 93.2) + (347.2 + 731.2) * (93.2 - 93.2)) * 0.5 * 0.00694$
GARAGE (Non-living area)	690	$-((292.8 + 292.8) * (609.1 - 655.6) + (292.8 + 389.6) * (655.6 - 655.6) + (389.6 + 389.6) * (655.6 - 830.6) + (389.6 + 395.6) * (830.6 - 836.6) + (395.6 + 395.6) * (836.6 - 1003.3) + (395.6 + 305.6) * (1003.3 - 1003.3) + (305.6 + 305.6) * (1003.3 - 1019.4) + (305.6 + 122.3) * (1019.4 - 1019.4) + (122.3 + 122.3) * (1019.4 - 643) + (122.3 + 145.3) * (643 - 643) + (145.3 + 147.3) * (643 - 649) + (147.3 + 147.3) * (649 - 655.6) + (147.3 + 247.2) * (655.6 - 655.6) + (247.2 + 247.2) * (655.6 - 609.1) + (247.2 + 292.8) * (609.1 - 609.1)) * 0.5 * 0.00694$

2717 Enville Court, Wake Forest, Wake County, North Carolina, United States, 27587

Gross Living Area: 3421 sq. ft



Space	Area (sq. ft)	Calculation
FLOOR 2 (Living area)	1451	Coordinate Polygon Area Algorithm using inches $-((423.7 + 423.7) * (67 - 113.4) + (423.7 + 417.7) * (113.4 - 119.4) + (417.7 + 417.7) * (119.4 - 182.1) + (417.7 + 454.3) * (182.1 - 182.1) + (454.3 + 454.3) * (182.1 - 180.4) + (454.3 + 659.1) * (180.4 - 180.4) + (659.1 + 659.1) * (180.4 - 425.7) + (659.1 + 531.6) * (425.7 - 425.7) + (531.6 + 531.6) * (425.7 - 528.9) + (531.6 + 533.6) * (528.9 - 534.9) + (533.6 + 533.6) * (534.9 - 579) + (533.6 + 452.5) * (579 - 579) + (452.5 + 452.5) * (579 - 603.4) + (452.5 + 321.7) * (603.4 - 603.4) + (321.7 + 315.7) * (603.4 - 597.4) + (315.7 + 315.7) * (597.4 - 479.3) + (315.7 + 65.7) * (479.3 - 479.3) + (65.7 + 65.7) * (479.3 - 182.4) + (65.7 + 299.2) * (182.4 - 182.4) + (299.2 + 299.2) * (182.4 - 182.4))$

2717 Enville Court, Wake Forest, Wake County, North Carolina, United States, 27587

Gross Living Area: 3421 sq. ft

Space	Area (sq. ft)	Calculation <small>Coordinate Polygon Area Algorithm using inches</small>
LOW CEILING (Non-living area)	260	$(182.4 - 119.4) + (299.2 + 295.2) * (119.4 - 115.4) + (295.2 + 295.2) * (115.4 - 67) + (295.2 + 423.7) * (67 - 67)) * 0.5 * 0.00694$
LOW CEILING (Non-living area)	96	$-((315.7 + 315.7) * (479.3 - 597.4) + (315.7 + 321.7) * (597.4 - 603.4) + (321.7 + 321.7) * (603.4 - 628.5) + (321.7 + 65.7) * (628.5 - 628.5) + (65.7 + 65.7) * (628.5 - 479.3) + (65.7 + 315.7) * (479.3 - 479.3)) * 0.5 * 0.00694$
LOW CEILING (Non-living area)	173	$-((659.1 + 659.1) * (425.7 - 534.5) + (659.1 + 533.6) * (534.5 - 534.9) + (533.6 + 531.6) * (534.9 - 528.9) + (531.6 + 531.6) * (528.9 - 425.7) + (531.6 + 659.1) * (425.7 - 425.7)) * 0.5 * 0.00694$
LOW CEILING (Non-living area)	13	$-((295.2 + 295.2) * (67 - 115.4) + (295.2 + 299.2) * (115.4 - 119.4) + (299.2 + 269.2) * (119.4 - 119.4) + (269.2 + 269.2) * (119.4 - 182.4) + (269.2 + 65.7) * (182.4 - 182.4) + (65.7 + 65.7) * (182.4 - 67) + (65.7 + 295.2) * (67 - 67)) * 0.5 * 0.00694$
LOW CEILING (Non-living area)	20	$-((299.2 + 299.2) * (119.4 - 182.4) + (299.2 + 269.2) * (182.4 - 182.4) + (269.2 + 269.2) * (182.4 - 119.4) + (269.2 + 299.2) * (119.4 - 119.4)) * 0.5 * 0.00694$
LOW CEILING (Non-living area)	20	$-((460.3 + 460.3) * (113.4 - 180.4) + (460.3 + 454.3) * (180.4 - 180.4) + (454.3 + 454.3) * (180.4 - 182.1) + (454.3 + 417.7) * (182.1 - 182.1) + (417.7 + 417.7) * (182.1 - 119.4) + (417.7 + 423.7) * (119.4 - 113.4) + (423.7 + 460.3) * (113.4 - 113.4)) * 0.5 * 0.00694$
LOW CEILING (Non-living area)	168	$-((659.4 + 659.2) * (67 - 180.4) + (659.2 + 653.1) * (180.4 - 180.4) + (653.1 + 460.3) * (180.4 - 180.4) + (460.3 + 460.3) * (180.4 - 113.4) + (460.3 + 423.7) * (113.4 - 113.4) + (423.7 + 423.7) * (113.4 - 67) + (423.7 + 659.4) * (67 - 67)) * 0.5 * 0.00694$