



Home report


2752 Lansing Drive Southwest, Raleigh Court, Roanoke,
Roanoke city, Virginia, United States, 24015




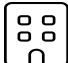
Property summary


 **1** Garages


 **3** Bedrooms

 **1** Bathrooms

 **0** Half baths

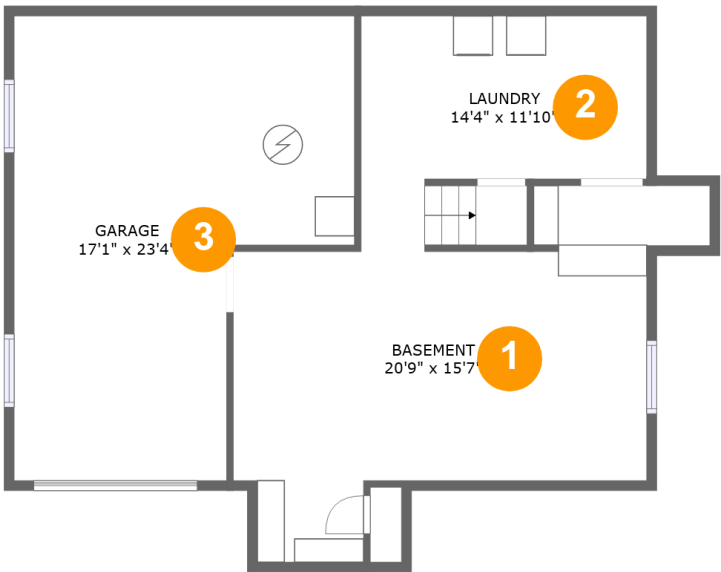
 **3** Floors

 **1,220** Gross living area sqft

 **2,192** Total sqft

Home report

2752 Lansing Drive Southwest, Raleigh Court, Roanoke,
Roanoke city, Virginia, United States, 24015



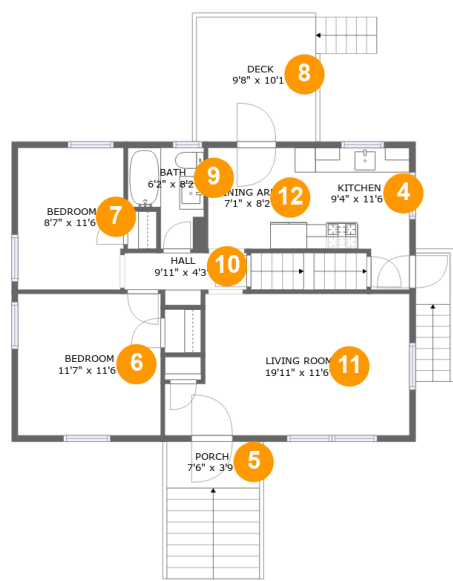
Room dimensions

Floor 1 Total sqft: 846 Living area: 0

#		Max Dimensions	sqft	Included
1	Basement	20'9" x 15'7"	289 sq. ft	No
2	Laundry	14'4" x 11'10"	145 sq. ft	No
3	Garage	17'1" x 23'4"	324 sq. ft	No

Home report

2752 Lansing Drive Southwest, Raleigh Court, Roanoke,
Roanoke city, Virginia, United States, 24015



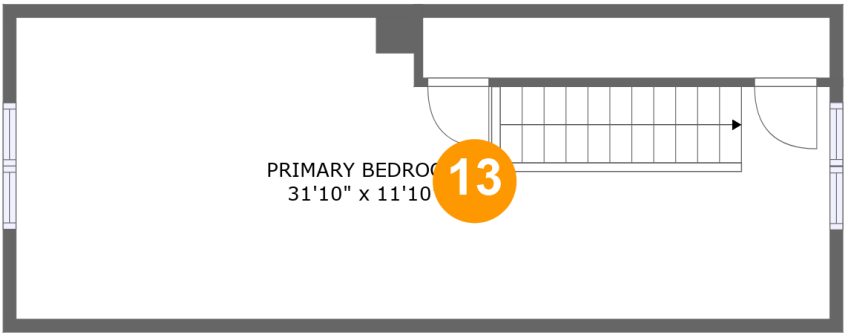
Room dimensions

Floor 2 Total sqft: 926 Living area: 800

#		Max Dimensions	sqft	Included
4	Kitchen	9'4" x 11'6"	87 sq. ft	Yes
5	Porch	7'6" x 3'9"	28 sq. ft	No
6	Bedroom	11'7" x 11'6"	134 sq. ft	Yes
7	Bedroom	8'7" x 11'6"	98 sq. ft	Yes
8	Deck	9'8" x 10'1"	98 sq. ft	No
9	Bath	6'2" x 8'2"	42 sq. ft	Yes
10	Hall	9'11" x 4'3"	33 sq. ft	Yes
11	Living Room	19'11" x 11'6"	205 sq. ft	Yes
12	Dining Area	7'1" x 8'2"	58 sq. ft	Yes

Home report

2752 Lansing Drive Southwest, Raleigh Court, Roanoke,
Roanoke city, Virginia, United States, 24015



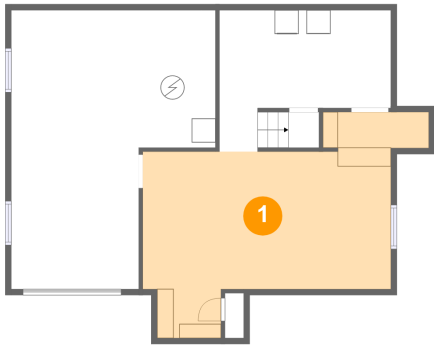
Room dimensions

Floor 3 Total sqft: 420 Living area: 420

#		Max Dimensions	sqft	Included
13	Primary Bedroom	31'10" x 11'10"	331 sq. ft	Yes

2752 Lansing Drive Southwest, Raleigh Court, Roanoke,
Roanoke city, Virginia, United States, 24015

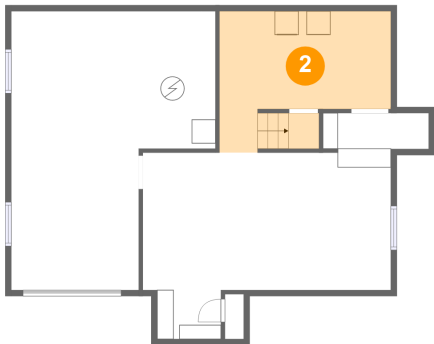
1 Floor 1 - Basement



Max Dimensions: 20'9" x 15'7"
Calculated Area: 289 sq. ft
Included: No

Heated: Yes
Finished: No
Enclosed: Yes
Contiguous: Yes
Permitted: Yes
Wet space: No
Addition: No
Conversion: No

2 Floor 1 - Laundry

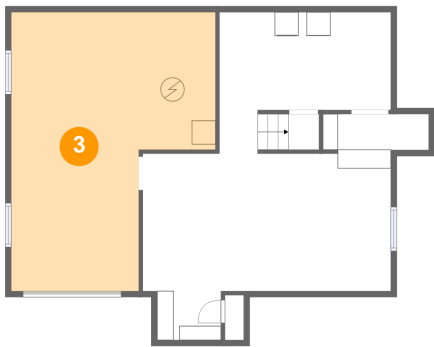


Max Dimensions: 14'4" x 11'10"
Calculated Area: 145 sq. ft
Included: No

Heated: Yes
Finished: No
Enclosed: Yes
Contiguous: Yes
Permitted: Yes
Wet space: No
Addition: No
Conversion: No

2752 Lansing Drive Southwest, Raleigh Court, Roanoke,
Roanoke city, Virginia, United States, 24015

3 Floor 1 - Garage



Max Dimensions: 17'1" x 23'4"
Calculated Area: 324 sq. ft
Included: No

Heated: No
Finished: No
Enclosed: Yes
Contiguous: Yes
Permitted: Yes
Wet space: No
Addition: No
Conversion: No

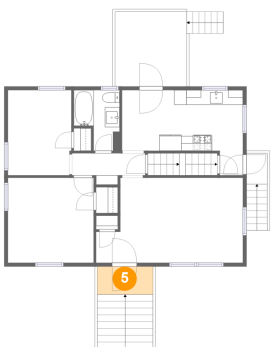
4 Floor 2 - Kitchen



Max Dimensions: 9'4" x 11'6"
Calculated Area: 87 sq. ft
Included: Yes

Heated: Yes
Finished: Yes
Enclosed: Yes
Contiguous: Yes
Permitted: Yes
Wet space: No
Addition: No
Conversion: No

5 Floor 2 - Porch

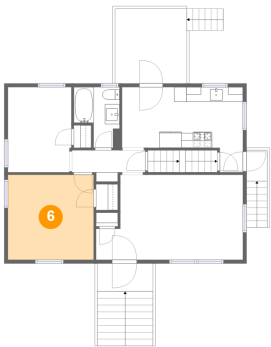


Max Dimensions: 7'6" x 3'9"
Calculated Area: 28 sq. ft
Included: No

Heated: No
Finished: Yes
Enclosed: No
Contiguous: Yes
Permitted: Yes
Wet space: No
Addition: No
Conversion: No

2752 Lansing Drive Southwest, Raleigh Court, Roanoke,
Roanoke city, Virginia, United States, 24015

6 Floor 2 - Bedroom



Max Dimensions: 11'7" x 11'6"
Calculated Area: 134 sq. ft
Included: Yes

Heated: Yes
Finished: Yes
Enclosed: Yes
Contiguous: Yes
Permitted: Yes
Wet space: No
Addition: No
Conversion: No

7 Floor 2 - Bedroom



Max Dimensions: 8'7" x 11'6"
Calculated Area: 98 sq. ft
Included: Yes

Heated: Yes
Finished: Yes
Enclosed: Yes
Contiguous: Yes
Permitted: Yes
Wet space: No
Addition: No
Conversion: No

8 Floor 2 - Deck



Max Dimensions: 9'8" x 10'1"
Calculated Area: 98 sq. ft
Included: No

Heated: No
Finished: Yes
Enclosed: No
Contiguous: Yes
Permitted: Yes
Wet space: No
Addition: No
Conversion: No

2752 Lansing Drive Southwest, Raleigh Court, Roanoke,
Roanoke city, Virginia, United States, 24015

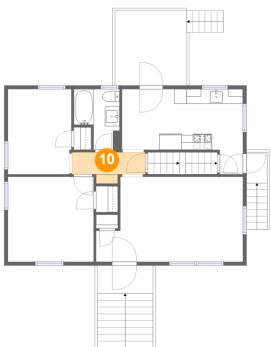
9 Floor 2 - Bath



Max Dimensions: 6'2" x 8'2"
Calculated Area: 42 sq. ft
Included: Yes

Heated: Yes
Finished: Yes
Enclosed: Yes
Contiguous: Yes
Permitted: Yes
Wet space: Yes
Addition: No
Conversion: No

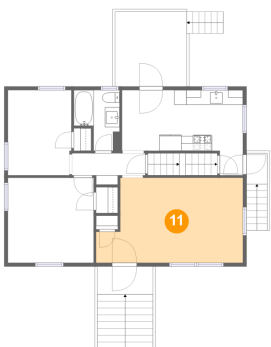
10 Floor 2 - Hall



Max Dimensions: 9'11" x 4'3"
Calculated Area: 33 sq. ft
Included: Yes

Heated: Yes
Finished: Yes
Enclosed: Yes
Contiguous: Yes
Permitted: Yes
Wet space: No
Addition: No
Conversion: No

11 Floor 2 - Living Room

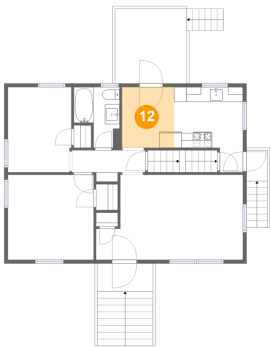


Max Dimensions: 19'11" x 11'6"
Calculated Area: 205 sq. ft
Included: Yes

Heated: Yes
Finished: Yes
Enclosed: Yes
Contiguous: Yes
Permitted: Yes
Wet space: No
Addition: No
Conversion: No

2752 Lansing Drive Southwest, Raleigh Court, Roanoke,
Roanoke city, Virginia, United States, 24015

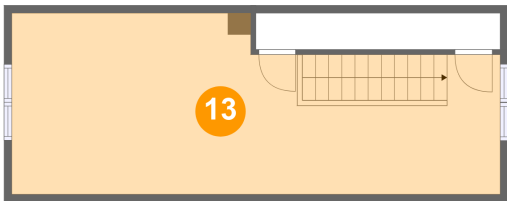
12 Floor 2 - Dining Area



Max Dimensions: 7'1" x 8'2"
Calculated Area: 58 sq. ft
Included: Yes

Heated: Yes
Finished: Yes
Enclosed: Yes
Contiguous: Yes
Permitted: Yes
Wet space: No
Addition: No
Conversion: No

13 Floor 3 - Primary Bedroom



Max Dimensions: 31'10" x 11'10"
Calculated Area: 331 sq. ft
Included: Yes

Heated: Yes
Finished: Yes
Enclosed: Yes
Contiguous: Yes
Permitted: Yes
Wet space: No
Addition: No
Conversion: No