

# Home report

**Palmcrest Lane 1840**  
Clearwater

## Highlights



**1 Kitchen**



**2 Living room**



**4 Bedroom**



**3 Bath**



**1 Office**



**26 Doors**



**28 Windows**

## Nearby services Data source: Google Maps



**Highland Ave + Bayview Dr, 0.9 mi**



**Publix Super Market at LaBelle Plaza, 0.8 mi**



**Publix Pharmacy at LaBelle Plaza, 0.8 mi**



**Saint Paul's - Clearwater's Independent School, 0.4 mi**

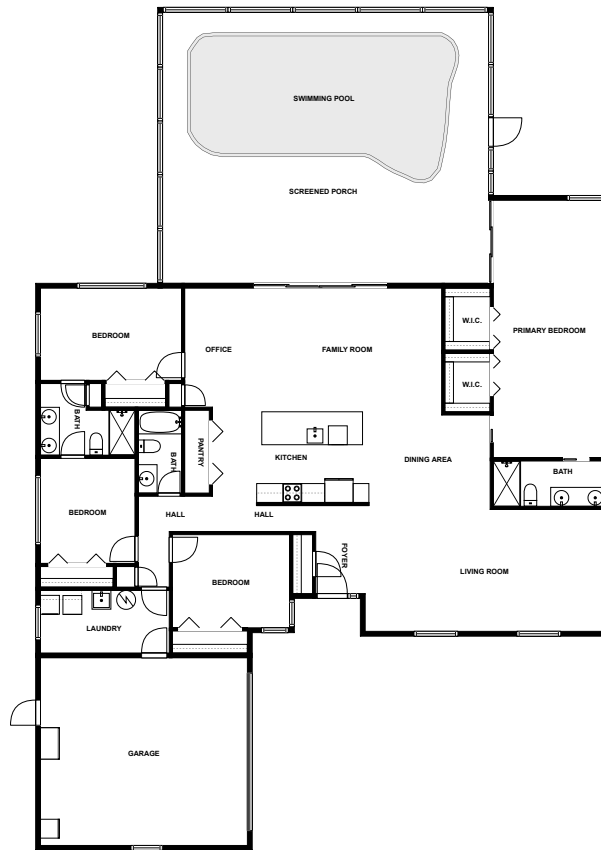


**Remy's Cafe, 0.8 mi**



**Arbor Office Park Heliport, 2.1 mi**

# Floor plan



SIZES AND DIMENSIONS ARE APPROXIMATE, ACTUAL MAY VARY.



## Appendix 1: Data sheet

Garage - 1	Utility - 1	Utility - Laundry - 1
Bedroom - 4	Bedroom - Master - 1	Bath - 3
Pantry - 1	Closet - 2	Closet - WalkIn - 2
Outdoor - 1	Outdoor - Porch - 1	Outdoor - Porch - Screen - 1
LivingRoom - 2	LivingRoom - Family - 1	Office - 1
Hall - 2	Entry - 1	Entry - Foyer - 1
Dining - 1	Dining - Open - 1	Kitchen - 1
SwimmingPool - 1		