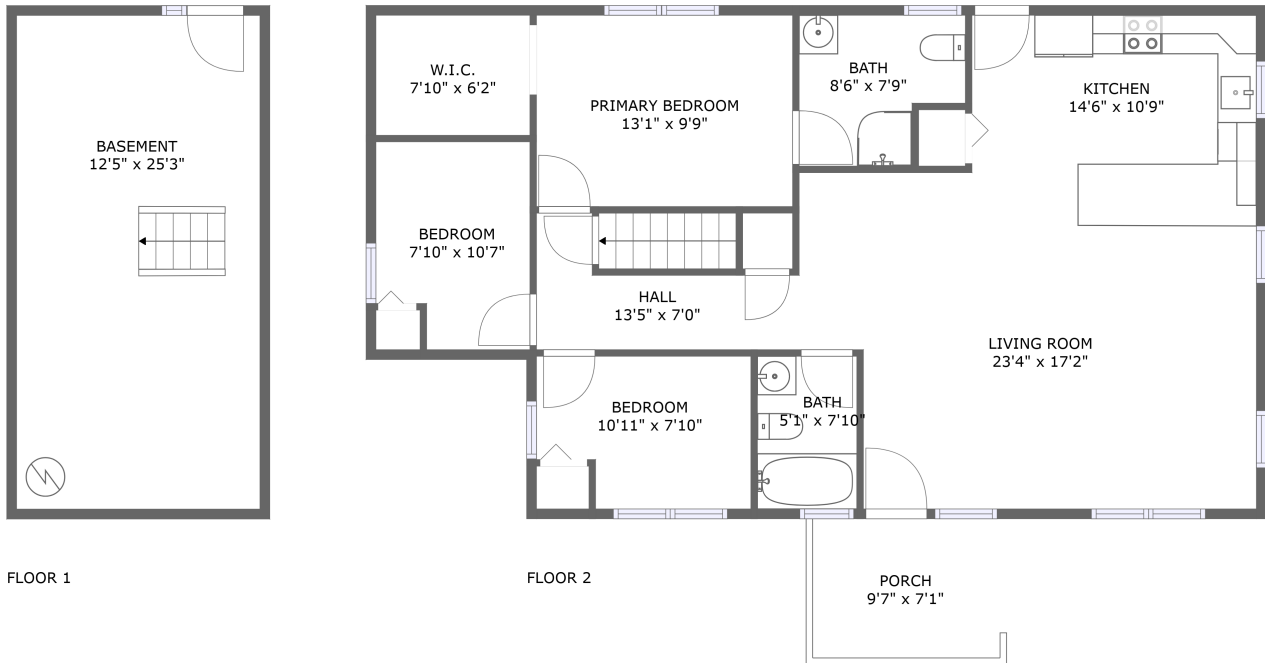


# 696 Burger Hollow Rd, Kunkletown, PA, US

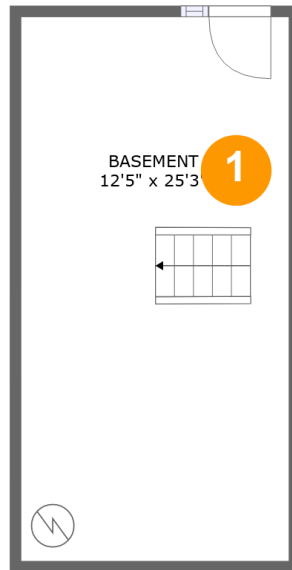


## Property summary

**0** Garages      **3** Bedrooms      **2** Bathrooms      **0** Half baths

**2** Floors      **1,139** Gross living area sqft      **1,559** Total sqft

# 696 Burger Hollow Rd, Kunkletown, PA, US

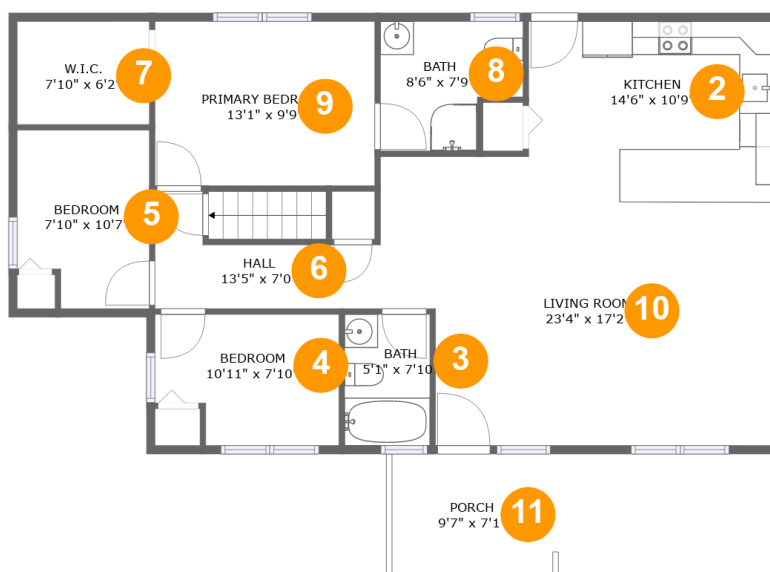


## Room dimensions

Floor 1

Total sqft: 352 Living area: 0

#		Dimensions	sqft	Counted as living area
1	Basement	12'5" x 25'3"	314 sq. ft	No

**696 Burger Hollow Rd, Kunkletown, PA, US****Room dimensions**

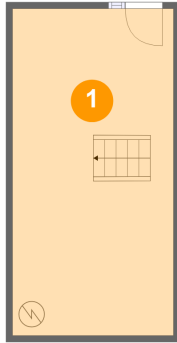
Floor 2

Total sqft: 1207 Living area: 1139

#		Dimensions	sqft	Counted as living area
2	Kitchen	14'6" x 10'9"	156 sq. ft	Yes
3	Bath	5'1" x 7'10"	40 sq. ft	Yes
4	Bedroom	10'11" x 7'10"	78 sq. ft	Yes
5	Bedroom	7'10" x 10'7"	77 sq. ft	Yes
6	Hall	13'5" x 7'0"	60 sq. ft	Yes
7	W.I.C.	7'10" x 6'2"	48 sq. ft	Yes
8	Bath	8'6" x 7'9"	57 sq. ft	Yes
9	Primary Bedroom	13'1" x 9'9"	128 sq. ft	Yes
10	Living Room	23'4" x 17'2"	336 sq. ft	Yes
11	Porch	9'7" x 7'1"	68 sq. ft	No

# 696 Burger Hollow Rd, Kunkletown, PA, US

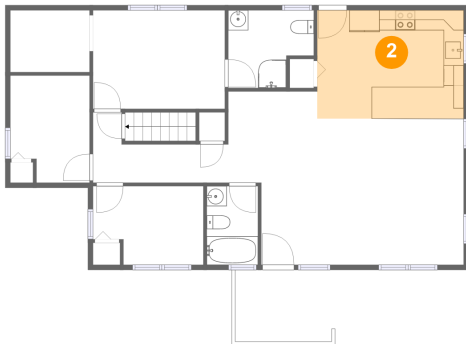
## 1 Floor 1 - Basement



Dimensions: 12'5" x 25'3"  
Area: 314 sq. ft  
Counted as living area: No

Heated: Yes  
Finished: No  
Enclosed: Yes  
Contiguous: Yes  
Permitted: Yes  
Wet space: No  
Addition: No  
Conversion: No

## 2 Floor 2 - Kitchen

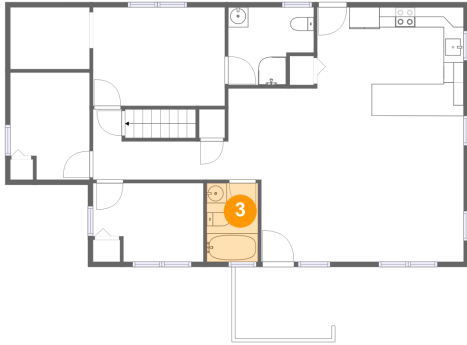


Dimensions: 14'6" x 10'9"  
Area: 156 sq. ft  
Counted as living area: Yes

Heated: Yes  
Finished: Yes  
Enclosed: Yes  
Contiguous: Yes  
Permitted: Yes  
Wet space: No  
Addition: No  
Conversion: No

# 696 Burger Hollow Rd, Kunkletown, PA, US

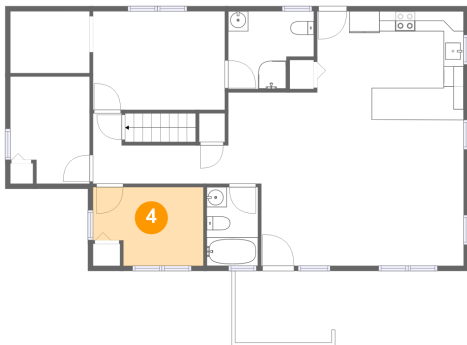
## 3 Floor 2 - Bath



Dimensions: 5'1" x 7'10"  
Area: 40 sq. ft  
Counted as living area: Yes

Heated: Yes  
Finished: Yes  
Enclosed: Yes  
Contiguous: Yes  
Permitted: Yes  
Wet space: Yes  
Addition: No  
Conversion: No

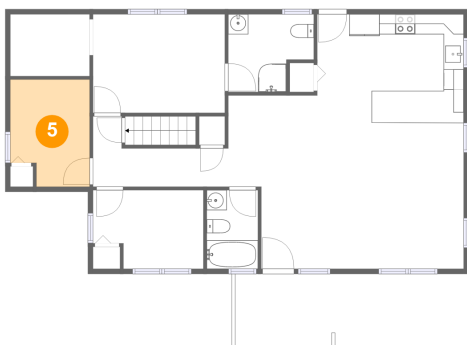
## 4 Floor 2 - Bedroom



Dimensions: 10'11" x 7'10"  
Area: 78 sq. ft  
Counted as living area: Yes

Heated: Yes  
Finished: Yes  
Enclosed: Yes  
Contiguous: Yes  
Permitted: Yes  
Wet space: No  
Addition: No  
Conversion: No

## 5 Floor 2 - Bedroom

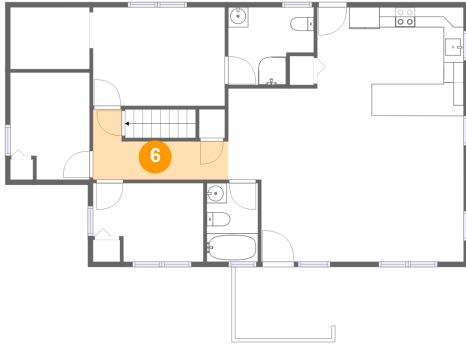


Dimensions: 7'10" x 10'7"  
Area: 77 sq. ft  
Counted as living area: Yes

Heated: Yes  
Finished: Yes  
Enclosed: Yes  
Contiguous: Yes  
Permitted: Yes  
Wet space: No  
Addition: No  
Conversion: No

# 696 Burger Hollow Rd, Kunkletown, PA, US

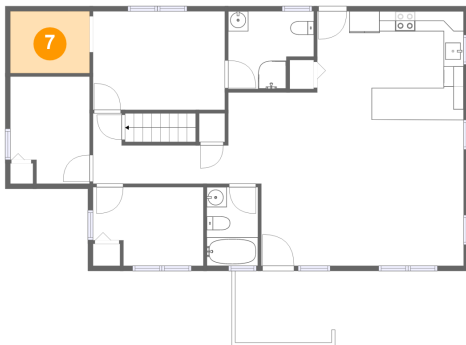
## 6 Floor 2 - Hall



Dimensions: 13'5" x 7'0"  
Area: 60 sq. ft  
Counted as living area: Yes

Heated: Yes  
Finished: Yes  
Enclosed: Yes  
Contiguous: Yes  
Permitted: Yes  
Wet space: No  
Addition: No  
Conversion: No

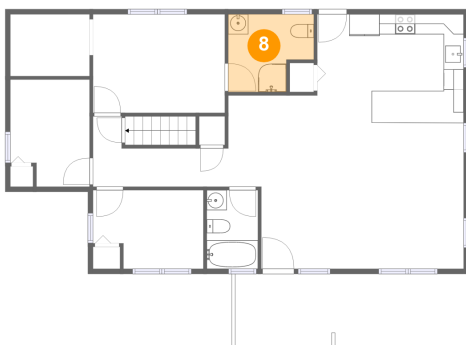
## 7 Floor 2 - W.I.C.



Dimensions: 7'10" x 6'2"  
Area: 48 sq. ft  
Counted as living area: Yes

Heated: Yes  
Finished: Yes  
Enclosed: Yes  
Contiguous: Yes  
Permitted: Yes  
Wet space: No  
Addition: No  
Conversion: No

## 8 Floor 2 - Bath

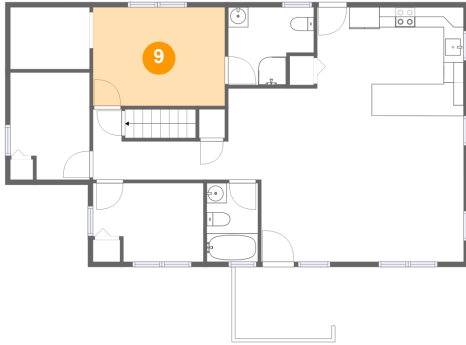


Dimensions: 8'6" x 7'9"  
Area: 57 sq. ft  
Counted as living area: Yes

Heated: Yes  
Finished: Yes  
Enclosed: Yes  
Contiguous: Yes  
Permitted: Yes  
Wet space: Yes  
Addition: No  
Conversion: No

# 696 Burger Hollow Rd, Kunkletown, PA, US

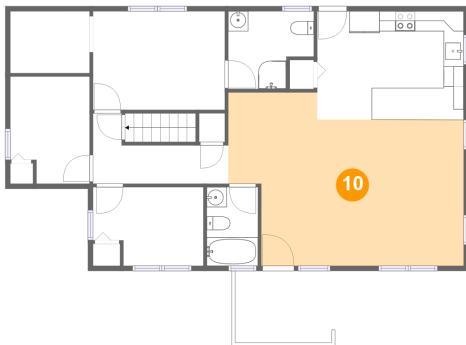
## 9 Floor 2 - Primary Bedroom



Dimensions: 13'1" x 9'9"  
Area: 128 sq. ft  
Counted as living area: Yes

Heated: Yes  
Finished: Yes  
Enclosed: Yes  
Contiguous: Yes  
Permitted: Yes  
Wet space: No  
Addition: No  
Conversion: No

## 10 Floor 2 - Living Room



Dimensions: 23'4" x 17'2"  
Area: 336 sq. ft  
Counted as living area: Yes

Heated: Yes  
Finished: Yes  
Enclosed: Yes  
Contiguous: Yes  
Permitted: Yes  
Wet space: No  
Addition: No  
Conversion: No

## 11 Floor 2 - Porch



Dimensions: 9'7" x 7'1"  
Area: 68 sq. ft  
Counted as living area: No

Heated: No  
Finished: Yes  
Enclosed: No  
Contiguous: Yes  
Permitted: Yes  
Wet space: No  
Addition: No  
Conversion: No