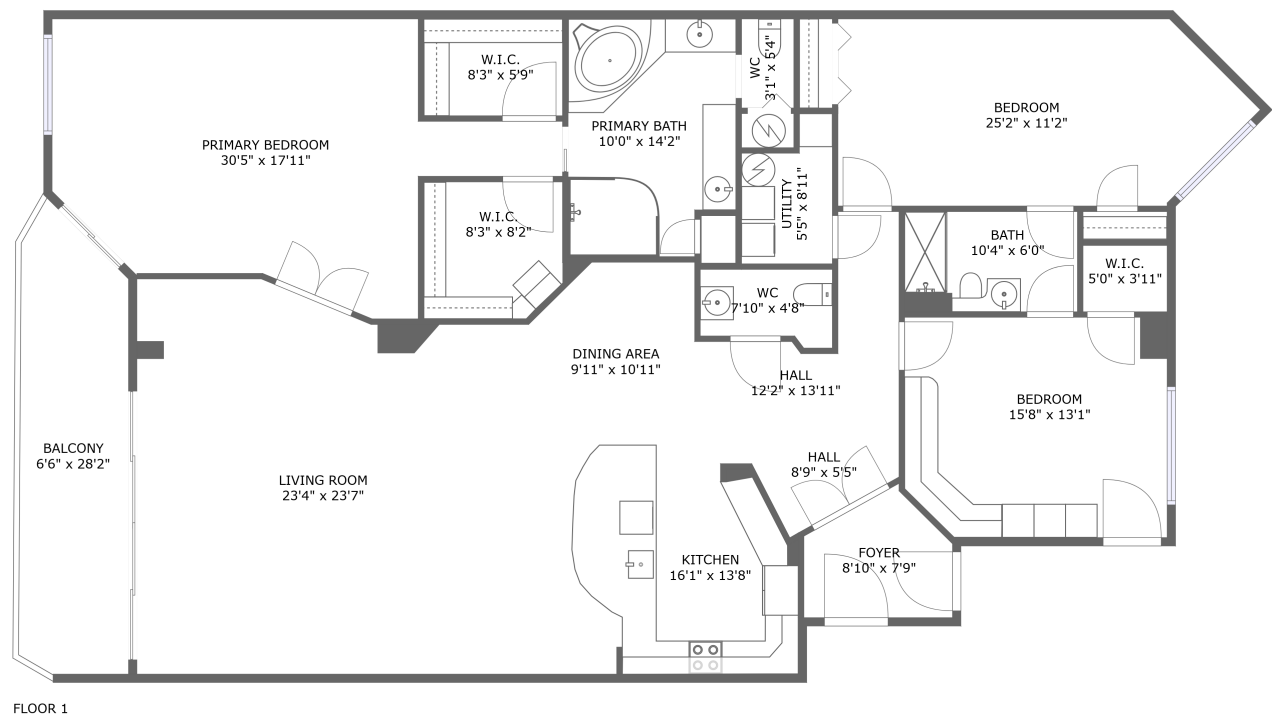


Home report

1860 North Fort Harrison Avenue, Old Clearwater Bay,
Clearwater, Pinellas County, Florida, United States, 33755, 402




Total GLA: 2464 sq. ft


Floor 1: 2464 sq. ft

Excluded: Balcony 169 sq. ft

Property summary

 1 Floors

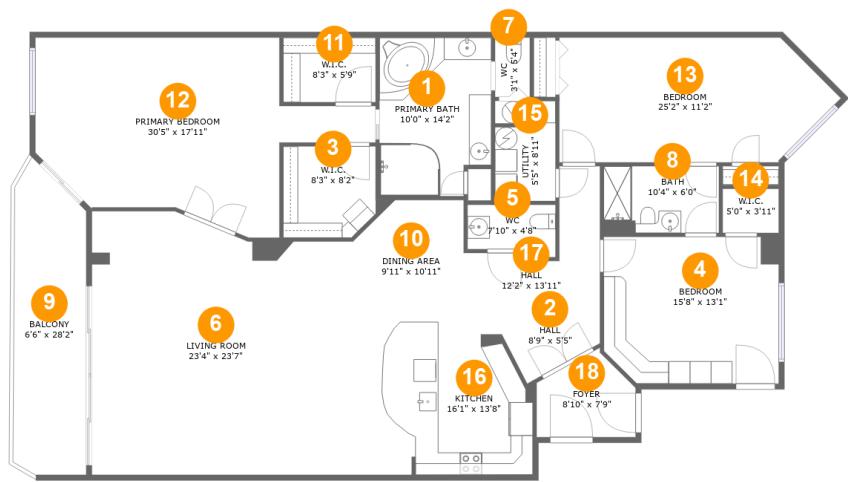
 3 Bedrooms

 2 Bathrooms

 1 Half baths

Home report

1860 North Fort Harrison Avenue, Old Clearwater Bay,
Clearwater, Pinellas County, Florida, United States, 33755, 402



Room dimensions

Floor 1

Total:2464sqft Excluded: 169sqft

#		Max Dimensions	sqft	Included
1	Primary Bath	10'0" x 14'2"	135 sq. ft	Yes
2	Hall	8'9" x 5'5"	31 sq. ft	Yes
3	W.I.C.	8'3" x 8'2"	66 sq. ft	Yes
4	Bedroom	15'8" x 13'1"	201 sq. ft	Yes
5	WC	7'10" x 4'8"	33 sq. ft	Yes
6	Living Room	23'4" x 23'7"	515 sq. ft	Yes
7	WC	3'1" x 5'4"	17 sq. ft	Yes
8	Bath	10'4" x 6'0"	61 sq. ft	Yes
9	Balcony	6'6" x 28'2"	169 sq. ft	No
10	Dining Area	9'11" x 10'11"	101 sq. ft	Yes
11	W.I.C.	8'3" x 5'9"	48 sq. ft	Yes

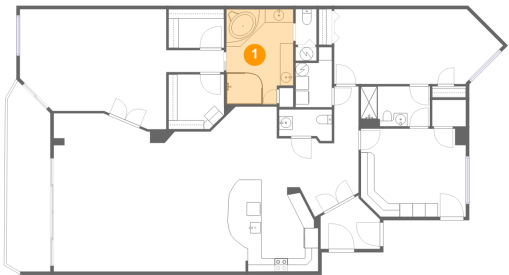
Home report

**1860 North Fort Harrison Avenue, Old Clearwater Bay,
Clearwater, Pinellas County, Florida, United States, 33755, 402**

#		Max Dimensions	sqft	Included
12	Primary Bedroom	30'5" x 17'11"	363 sq. ft	Yes
13	Bedroom	25'2" x 11'2"	249 sq. ft	Yes
14	W.I.C.	5'0" x 3'11"	20 sq. ft	Yes
15	Utility	5'5" x 8'11"	40 sq. ft	Yes
16	Kitchen	16'1" x 13'8"	209 sq. ft	Yes
17	Hall	12'2" x 13'11"	102 sq. ft	Yes
18	Foyer	8'10" x 7'9"	55 sq. ft	Yes

1860 North Fort Harrison Avenue, Old Clearwater Bay,
Clearwater, Pinellas County, Florida, United States, 33755, 402

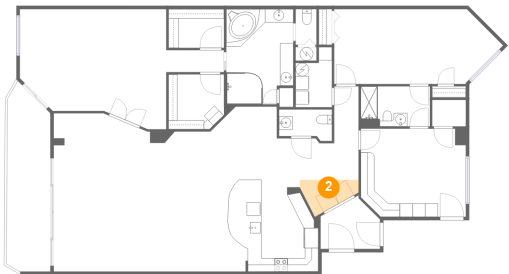
1 Floor 1 - Primary Bath



Max Dimensions: 10'0" x 14'2"
Calculated Area: 135 sq. ft
Included: Yes

Heated: Yes
Finished: Yes
Enclosed: Yes
Contiguous: Yes
Permitted: Yes
Wet space: Yes
Addition: No
Conversion: No

2 Floor 1 - Hall

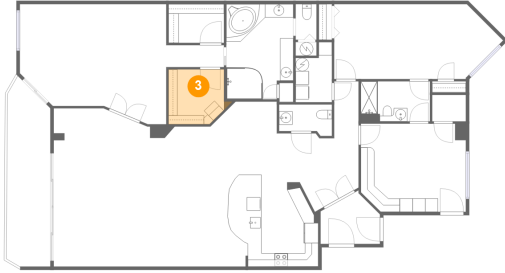


Max Dimensions: 8'9" x 5'5"
Calculated Area: 31 sq. ft
Included: Yes

Heated: Yes
Finished: Yes
Enclosed: Yes
Contiguous: Yes
Permitted: Yes
Wet space: No
Addition: No
Conversion: No

1860 North Fort Harrison Avenue, Old Clearwater Bay,
Clearwater, Pinellas County, Florida, United States, 33755, 402

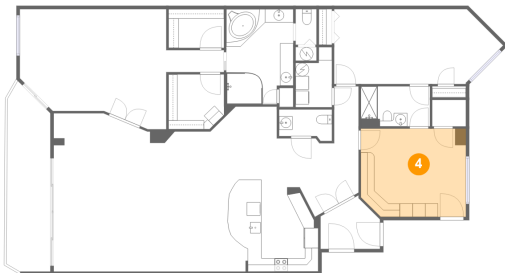
3 Floor 1 - W.I.C.



Max Dimensions: 8'3" x 8'2"
Calculated Area: 66 sq. ft
Included: Yes

Heated: Yes
Finished: Yes
Enclosed: Yes
Contiguous: Yes
Permitted: Yes
Wet space: No
Addition: No
Conversion: No

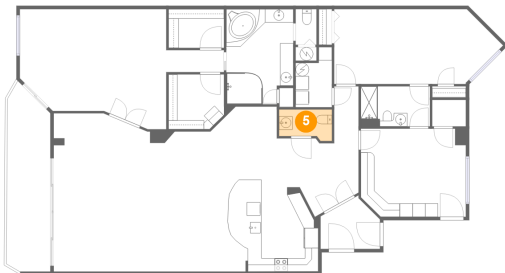
4 Floor 1 - Bedroom



Max Dimensions: 15'8" x 13'1"
Calculated Area: 201 sq. ft
Included: Yes

Heated: Yes
Finished: Yes
Enclosed: Yes
Contiguous: Yes
Permitted: Yes
Wet space: No
Addition: No
Conversion: No

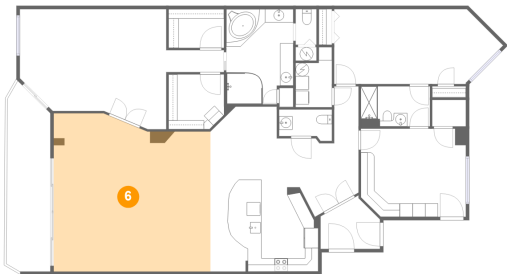
5 Floor 1 - WC



Max Dimensions: 7'10" x 4'8"
Calculated Area: 33 sq. ft
Included: Yes

Heated: Yes
Finished: Yes
Enclosed: Yes
Contiguous: Yes
Permitted: Yes
Wet space: Yes
Addition: No
Conversion: No

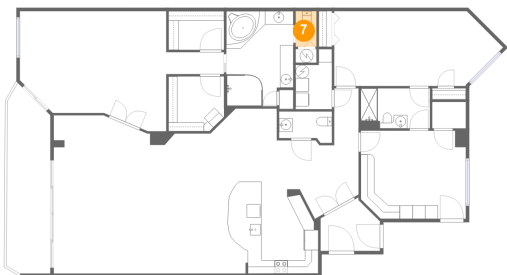
6 Floor 1 - Living Room



Max Dimensions: 23'4" x 23'7"
Calculated Area: 515 sq. ft
Included: Yes

Heated: Yes
Finished: Yes
Enclosed: Yes
Contiguous: Yes
Permitted: Yes
Wet space: No
Addition: No
Conversion: No

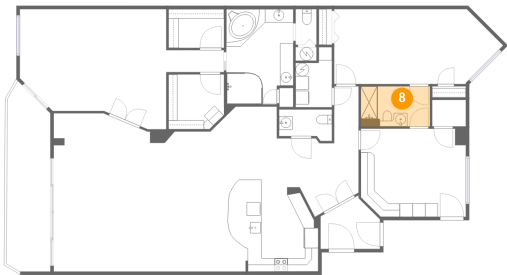
7 Floor 1 - WC



Max Dimensions: 3'1" x 5'4"
Calculated Area: 17 sq. ft
Included: Yes

Heated: Yes
Finished: Yes
Enclosed: Yes
Contiguous: Yes
Permitted: Yes
Wet space: Yes
Addition: No
Conversion: No

8 Floor 1 - Bath



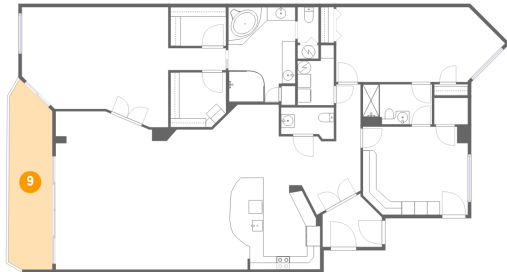
Max Dimensions: 10'4" x 6'0"
Calculated Area: 61 sq. ft
Included: Yes

Heated: Yes
Finished: Yes
Enclosed: Yes
Contiguous: Yes
Permitted: Yes
Wet space: Yes
Addition: No
Conversion: No

Home report

1860 North Fort Harrison Avenue, Old Clearwater Bay,
Clearwater, Pinellas County, Florida, United States, 33755, 402

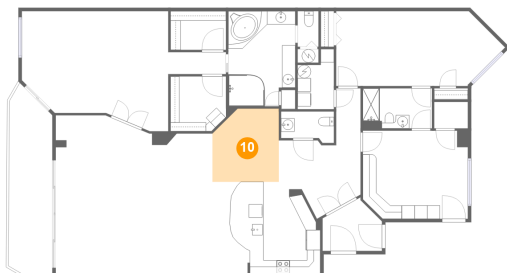
9 Floor 1 - Balcony



Max Dimensions: 6'6" x 28'2"
Calculated Area: 169 sq. ft
Included: No

Heated: No
Finished: Yes
Enclosed: No
Contiguous: Yes
Permitted: Yes
Wet space: No
Addition: No
Conversion: No

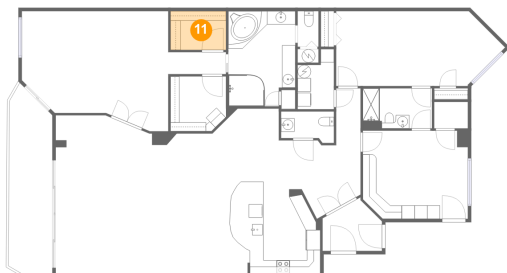
10 Floor 1 - Dining Area



Max Dimensions: 9'11" x 10'11"
Calculated Area: 101 sq. ft
Included: Yes

Heated: Yes
Finished: Yes
Enclosed: Yes
Contiguous: Yes
Permitted: Yes
Wet space: No
Addition: No
Conversion: No

11 Floor 1 - W.I.C.



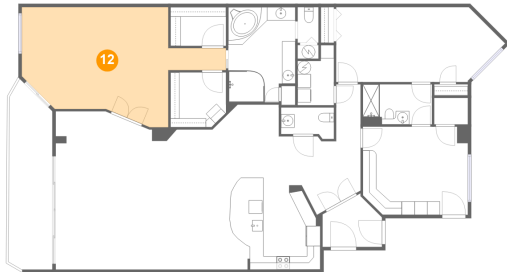
Max Dimensions: 8'3" x 5'9"
Calculated Area: 48 sq. ft
Included: Yes

Heated: Yes
Finished: Yes
Enclosed: Yes
Contiguous: Yes
Permitted: Yes
Wet space: No
Addition: No
Conversion: No

Home report

1860 North Fort Harrison Avenue, Old Clearwater Bay,
Clearwater, Pinellas County, Florida, United States, 33755, 402

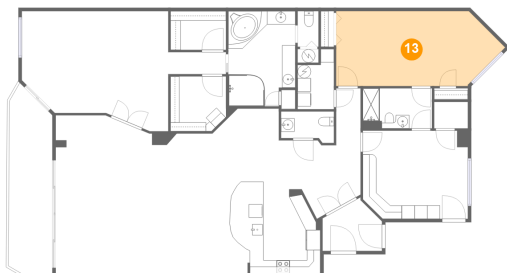
12 Floor 1 - Primary Bedroom



Max Dimensions: 30'5" x 17'11"
Calculated Area: 363 sq. ft
Included: Yes

Heated: Yes
Finished: Yes
Enclosed: Yes
Contiguous: Yes
Permitted: Yes
Wet space: No
Addition: No
Conversion: No

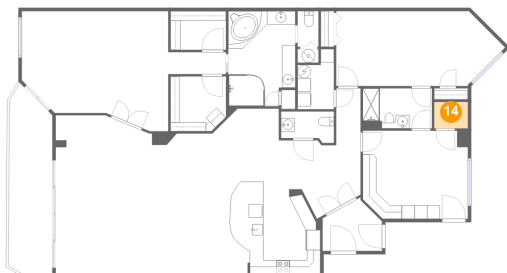
13 Floor 1 - Bedroom



Max Dimensions: 25'2" x 11'2"
Calculated Area: 249 sq. ft
Included: Yes

Heated: Yes
Finished: Yes
Enclosed: Yes
Contiguous: Yes
Permitted: Yes
Wet space: No
Addition: No
Conversion: No

14 Floor 1 - W.I.C.

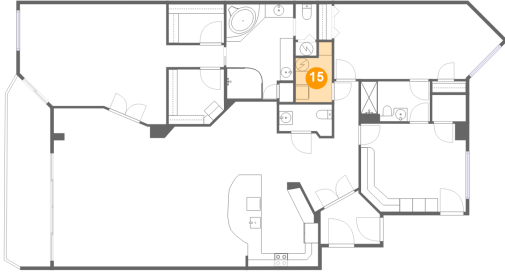


Max Dimensions: 5'0" x 3'11"
Calculated Area: 20 sq. ft
Included: Yes

Heated: Yes
Finished: Yes
Enclosed: Yes
Contiguous: Yes
Permitted: Yes
Wet space: No
Addition: No
Conversion: No

1860 North Fort Harrison Avenue, Old Clearwater Bay,
Clearwater, Pinellas County, Florida, United States, 33755, 402

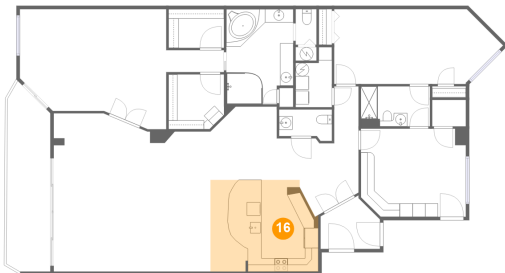
15 Floor 1 - Utility



Max Dimensions: 5'5" x 8'11"
Calculated Area: 40 sq. ft
Included: Yes

Heated: Yes
Finished: Yes
Enclosed: Yes
Contiguous: Yes
Permitted: Yes
Wet space: No
Addition: No
Conversion: No

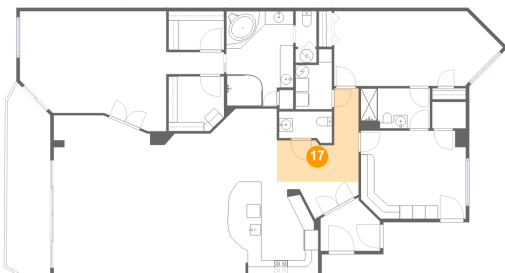
16 Floor 1 - Kitchen



Max Dimensions: 16'1" x 13'8"
Calculated Area: 209 sq. ft
Included: Yes

Heated: Yes
Finished: Yes
Enclosed: Yes
Contiguous: Yes
Permitted: Yes
Wet space: No
Addition: No
Conversion: No

17 Floor 1 - Hall

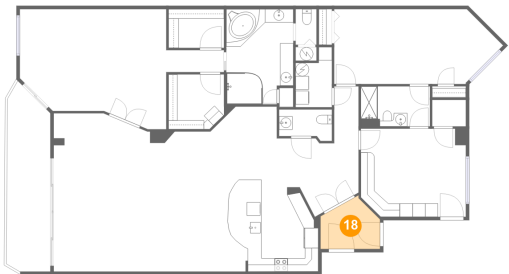


Max Dimensions: 12'2" x 13'11"
Calculated Area: 102 sq. ft
Included: Yes

Heated: Yes
Finished: Yes
Enclosed: Yes
Contiguous: Yes
Permitted: Yes
Wet space: No
Addition: No
Conversion: No

1860 North Fort Harrison Avenue, Old Clearwater Bay,
Clearwater, Pinellas County, Florida, United States, 33755, 402

18 Floor 1 - Foyer



Max Dimensions: 8'10" x 7'9"
Calculated Area: 55 sq. ft
Included: Yes

Heated: Yes
Finished: Yes
Enclosed: Yes
Contiguous: Yes
Permitted: Yes
Wet space: No
Addition: No
Conversion: No