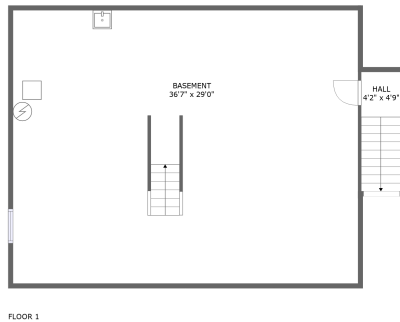
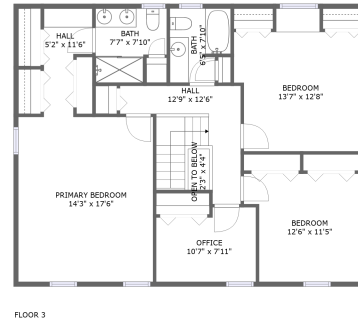
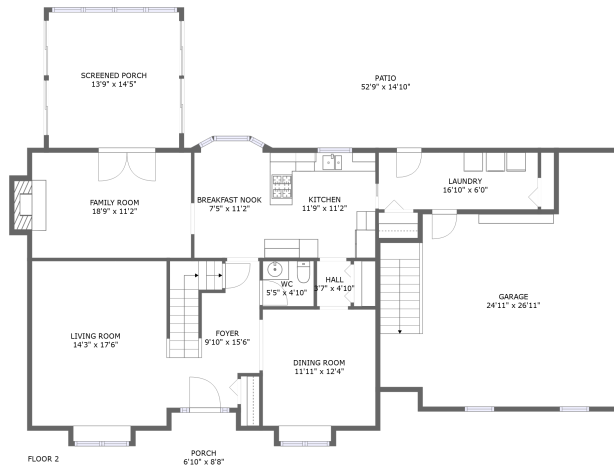



Home report


# 201 Laurel Way, Kiskiminetas Township, Spring Church, Armstrong County, Pennsylvania, United



## Property summary

 **1** Garages

 **3** Bedrooms

 **2** Bathrooms

 **1** Half baths

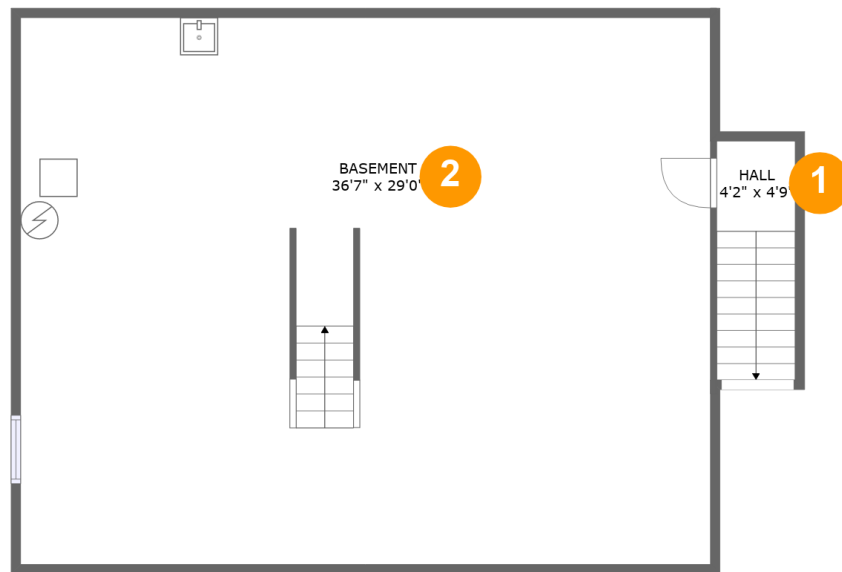
 **3** Floors

 **2,387** Gross living area sqft

 **5,014** Total sqft

Scan captured on Fri, 28 Mar 2025 02:31:23 GMT

Information is calculated by Cubicasa technology deemed highly reliable but not guaranteed.



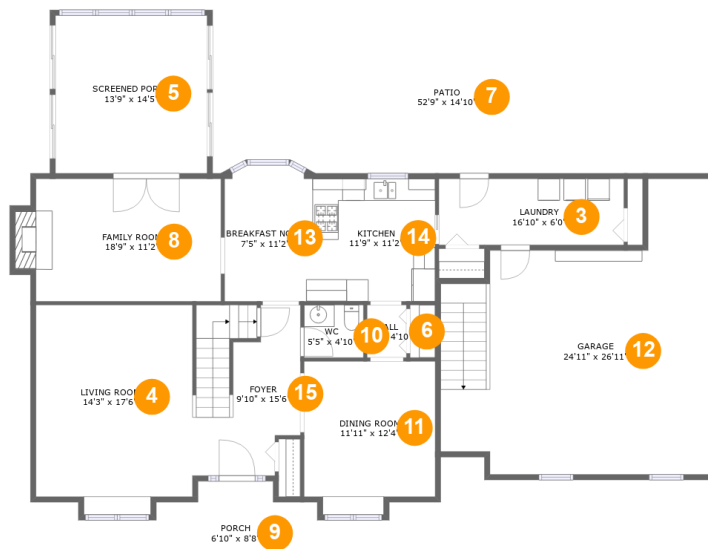
## Room dimensions

Floor 1

Total sqft: 1187

Living area: 0

#		Dimensions	sqft	Counted as living area
1	Hall	4'2" x 4'9"	53 sq. ft	No
2	Basement	36'7" x 29'0"	1059 sq. ft	No



## Room dimensions

Floor 2

Total sqft: 2706 Living area: 1276

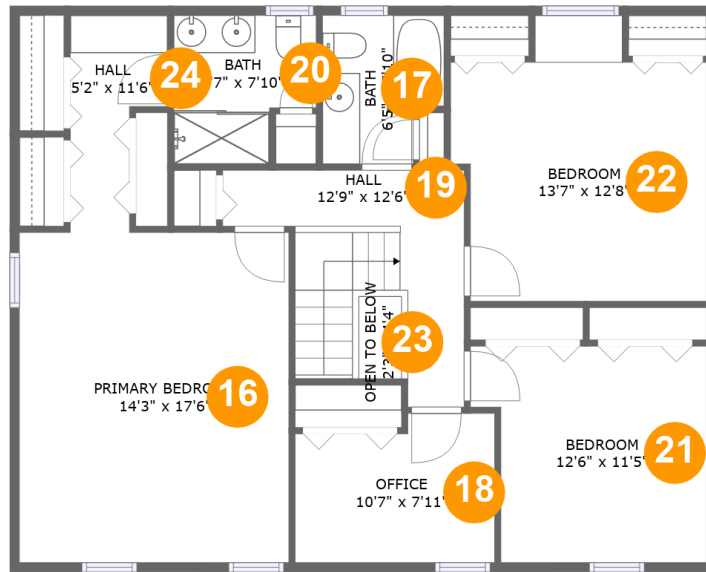
#		Dimensions	sqft	Counted as living area
3	Laundry	16'10" x 6'0"	102 sq. ft	Yes
4	Living Room	14'3" x 17'6"	259 sq. ft	Yes
5	Screened Porch	13'9" x 14'5"	199 sq. ft	No
6	Hall	3'7" x 4'10"	17 sq. ft	Yes
7	Patio	52'9" x 14'10"	582 sq. ft	No
8	Family Room	18'9" x 11'2"	198 sq. ft	Yes
9	Porch	6'10" x 8'8"	59 sq. ft	No
10	WC	5'5" x 4'10"	26 sq. ft	Yes
11	Dining Room	11'11" x 12'4"	157 sq. ft	Yes
12	Garage	24'11" x 26'11"	525 sq. ft	No
13	Breakfast Nook	7'5" x 11'2"	83 sq. ft	Yes

Home report

**201 Laurel Way, Kiskiminetas Township, Spring Church, Armstrong County, Pennsylvania, United**



#		Dimensions	sqft	Counted as living area
14	Kitchen	11'9" x 11'2"	131 sq. ft	Yes
15	Foyer	9'10" x 15'6"	138 sq. ft	Yes



## Room dimensions

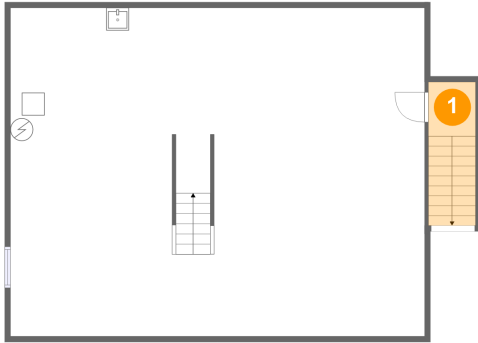
Floor 3

Total sqft: 1121

Living area: 1111

#		Dimensions	sqft	Counted as living area
16	Primary Bedroom	14'3" x 17'6"	249 sq. ft	Yes
17	Bath	6'5" x 7'10"	45 sq. ft	Yes
18	Office	10'7" x 7'11"	77 sq. ft	Yes
19	Hall	12'9" x 12'6"	105 sq. ft	Yes
20	Bath	7'7" x 7'10"	52 sq. ft	Yes
21	Bedroom	12'6" x 11'5"	130 sq. ft	Yes
22	Bedroom	13'7" x 12'8"	175 sq. ft	Yes
23	Open To Below	2'3" x 4'4"	10 sq. ft	No
24	Hall	5'2" x 11'6"	46 sq. ft	Yes

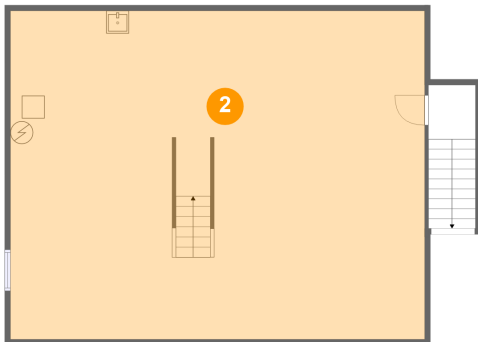
## 1 Floor 1 - Hall



Dimensions: 4'2" x 4'9"  
Area: 53 sq. ft  
Counted as living area: No

Heated: Yes  
Finished: Yes  
Enclosed: Yes  
Contiguous: No  
Permitted: Yes  
Wet space: No  
Addition: No  
Conversion: No

## 2 Floor 1 - Basement



Dimensions: 36'7" x 29'0"  
Area: 1059 sq. ft  
Counted as living area: No

Heated: No  
Finished: No  
Enclosed: Yes  
Contiguous: Yes  
Permitted: Yes  
Wet space: No  
Addition: No  
Conversion: No

# 201 Laurel Way, Kiskiminetas Township, Spring Church, Armstrong County, Pennsylvania, United

## 3 Floor 2 - Laundry



Dimensions: 16'10" x 6'0"  
Area: 102 sq. ft  
Counted as living area: Yes

Heated: Yes  
Finished: Yes  
Enclosed: Yes  
Contiguous: Yes  
Permitted: Yes  
Wet space: No  
Addition: No  
Conversion: No

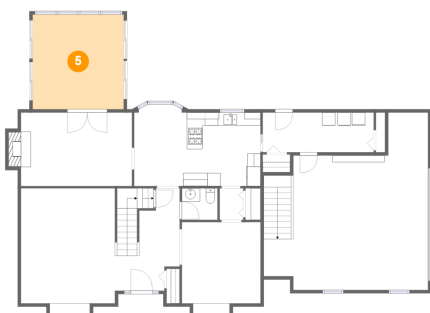
## 4 Floor 2 - Living Room



Dimensions: 14'3" x 17'6"  
Area: 259 sq. ft  
Counted as living area: Yes

Heated: Yes  
Finished: Yes  
Enclosed: Yes  
Contiguous: Yes  
Permitted: Yes  
Wet space: No  
Addition: No  
Conversion: No

## 5 Floor 2 - Screened Porch



Dimensions: 13'9" x 14'5"  
Area: 199 sq. ft  
Counted as living area: No

Heated: No  
Finished: Yes  
Enclosed: No  
Contiguous: Yes  
Permitted: Yes  
Wet space: No  
Addition: No  
Conversion: No

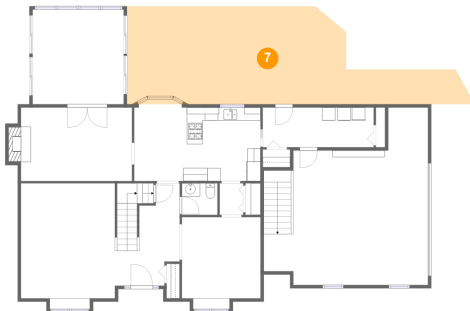
**6** Floor 2 - Hall



Dimensions: 3'7" x 4'10"  
Area: 17 sq. ft  
Counted as living area: Yes

Heated: Yes  
Finished: Yes  
Enclosed: Yes  
Contiguous: Yes  
Permitted: Yes  
Wet space: No  
Addition: No  
Conversion: No

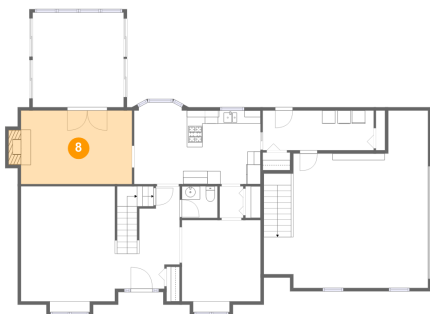
**7** Floor 2 - Patio



Dimensions: 52'9" x 14'10"  
Area: 582 sq. ft  
Counted as living area: No

Heated: No  
Finished: Yes  
Enclosed: No  
Contiguous: Yes  
Permitted: Yes  
Wet space: No  
Addition: No  
Conversion: No

**8** Floor 2 - Family Room

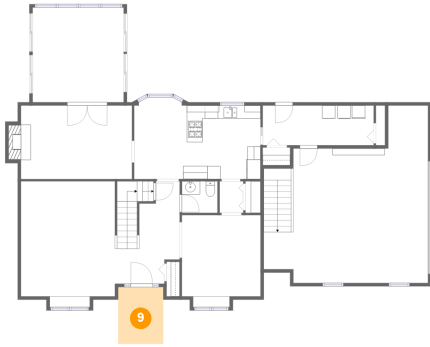


Dimensions: 18'9" x 11'2"  
Area: 198 sq. ft  
Counted as living area: Yes

Heated: Yes  
Finished: Yes  
Enclosed: Yes  
Contiguous: Yes  
Permitted: Yes  
Wet space: No  
Addition: No  
Conversion: No



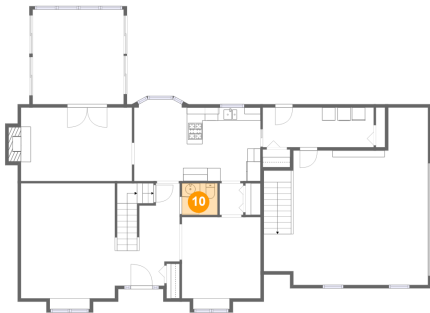
**9 Floor 2 - Porch**



Dimensions: 6'10" x 8'8"  
Area: 59 sq. ft  
Counted as living area: No

Heated: No  
Finished: Yes  
Enclosed: No  
Contiguous: Yes  
Permitted: Yes  
Wet space: No  
Addition: No  
Conversion: No

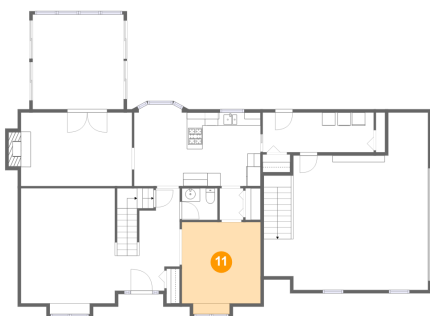
**10 Floor 2 - WC**



Dimensions: 5'5" x 4'10"  
Area: 26 sq. ft  
Counted as living area: Yes

Heated: Yes  
Finished: Yes  
Enclosed: Yes  
Contiguous: Yes  
Permitted: Yes  
Wet space: Yes  
Addition: No  
Conversion: No

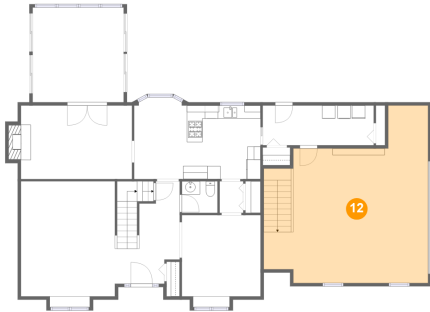
**11 Floor 2 - Dining Room**



Dimensions: 11'11" x 12'4"  
Area: 157 sq. ft  
Counted as living area: Yes

Heated: Yes  
Finished: Yes  
Enclosed: Yes  
Contiguous: Yes  
Permitted: Yes  
Wet space: No  
Addition: No  
Conversion: No

## 12 Floor 2 - Garage



Dimensions: 24'11" x 26'11"  
Area: 525 sq. ft  
Counted as living area: No

Heated: No  
Finished: No  
Enclosed: Yes  
Contiguous: Yes  
Permitted: Yes  
Wet space: No  
Addition: No  
Conversion: No

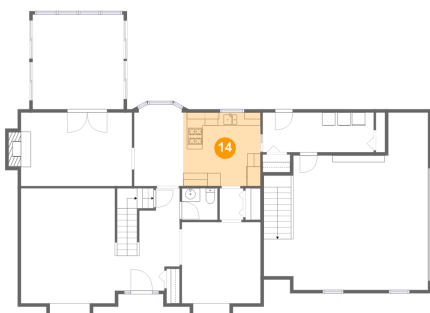
## 13 Floor 2 - Breakfast Nook



Dimensions: 7'5" x 11'2"  
Area: 83 sq. ft  
Counted as living area: Yes

Heated: Yes  
Finished: Yes  
Enclosed: Yes  
Contiguous: Yes  
Permitted: Yes  
Wet space: No  
Addition: No  
Conversion: No

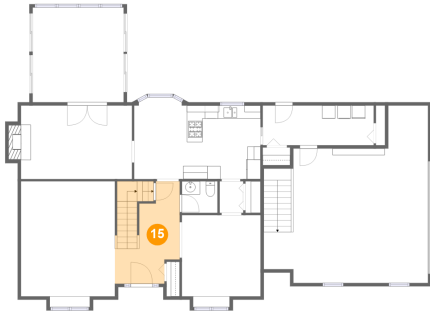
## 14 Floor 2 - Kitchen



Dimensions: 11'9" x 11'2"  
Area: 131 sq. ft  
Counted as living area: Yes

Heated: Yes  
Finished: Yes  
Enclosed: Yes  
Contiguous: Yes  
Permitted: Yes  
Wet space: No  
Addition: No  
Conversion: No

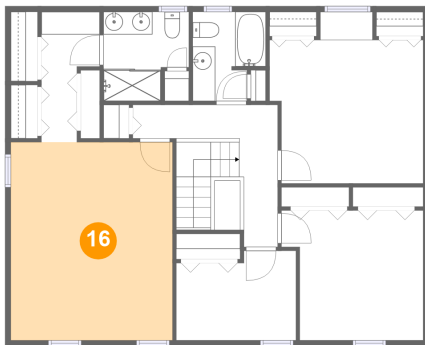
**15** Floor 2 - Foyer



Dimensions: 9'10" x 15'6"  
Area: 138 sq. ft  
Counted as living area: Yes

Heated: Yes  
Finished: Yes  
Enclosed: Yes  
Contiguous: Yes  
Permitted: Yes  
Wet space: No  
Addition: No  
Conversion: No

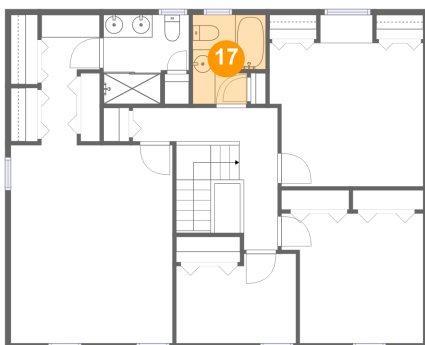
**16** Floor 3 - Primary Bedroom



Dimensions: 14'3" x 17'6"  
Area: 249 sq. ft  
Counted as living area: Yes

Heated: Yes  
Finished: Yes  
Enclosed: Yes  
Contiguous: Yes  
Permitted: Yes  
Wet space: No  
Addition: No  
Conversion: No

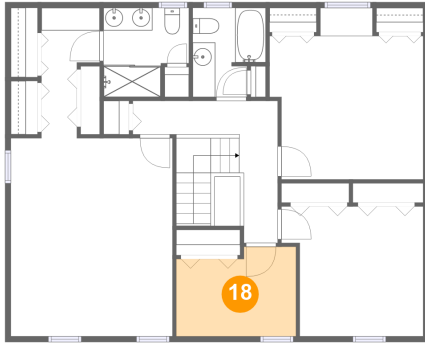
**17** Floor 3 - Bath



Dimensions: 6'5" x 7'10"  
Area: 45 sq. ft  
Counted as living area: Yes

Heated: Yes  
Finished: Yes  
Enclosed: Yes  
Contiguous: Yes  
Permitted: Yes  
Wet space: Yes  
Addition: No  
Conversion: No

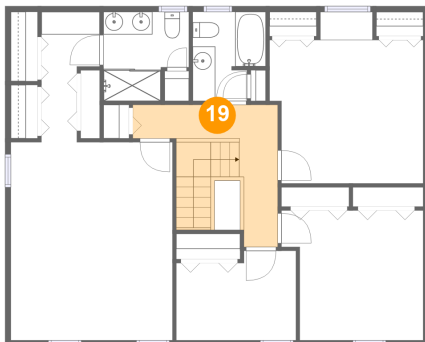
**18** Floor 3 - Office



Dimensions: 10'7" x 7'11"  
Area: 77 sq. ft  
Counted as living area: Yes

Heated: Yes  
Finished: Yes  
Enclosed: Yes  
Contiguous: Yes  
Permitted: Yes  
Wet space: No  
Addition: No  
Conversion: No

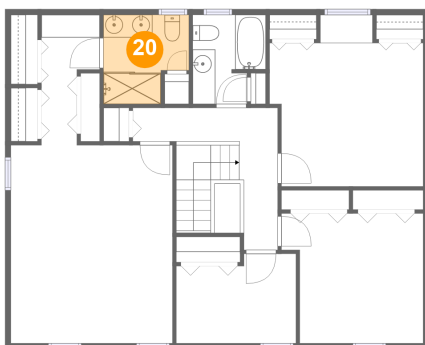
**19** Floor 3 - Hall



Dimensions: 12'9" x 12'6"  
Area: 105 sq. ft  
Counted as living area: Yes

Heated: Yes  
Finished: Yes  
Enclosed: Yes  
Contiguous: Yes  
Permitted: Yes  
Wet space: No  
Addition: No  
Conversion: No

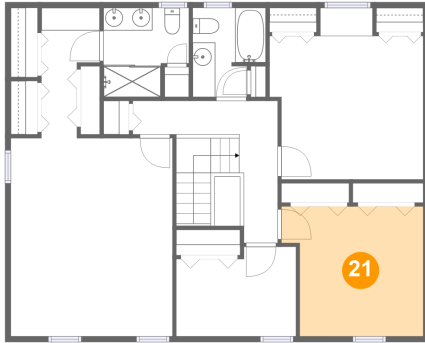
**20** Floor 3 - Bath



Dimensions: 7'7" x 7'10"  
Area: 52 sq. ft  
Counted as living area: Yes

Heated: Yes  
Finished: Yes  
Enclosed: Yes  
Contiguous: Yes  
Permitted: Yes  
Wet space: Yes  
Addition: No  
Conversion: No

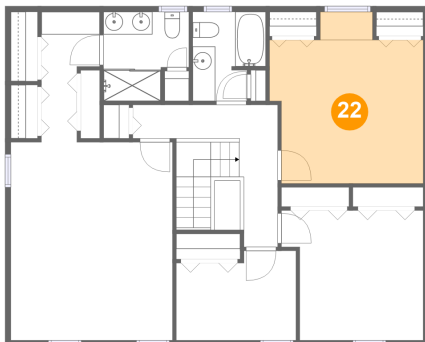
**21** Floor 3 - Bedroom



Dimensions: 12'6" x 11'5"  
Area: 130 sq. ft  
Counted as living area: Yes

Heated: Yes  
Finished: Yes  
Enclosed: Yes  
Contiguous: Yes  
Permitted: Yes  
Wet space: No  
Addition: No  
Conversion: No

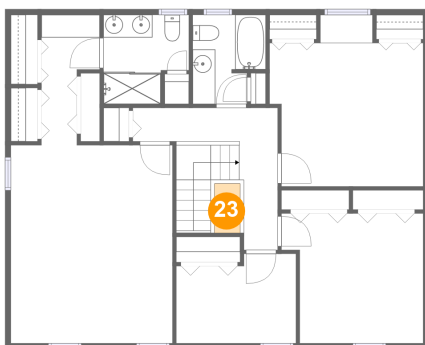
**22** Floor 3 - Bedroom



Dimensions: 13'7" x 12'8"  
Area: 175 sq. ft  
Counted as living area: Yes

Heated: Yes  
Finished: Yes  
Enclosed: Yes  
Contiguous: Yes  
Permitted: Yes  
Wet space: No  
Addition: No  
Conversion: No

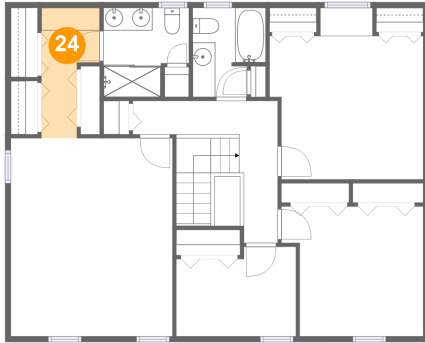
**23** Floor 3 - Open To Below



Dimensions: 2'3" x 4'4"  
Area: 10 sq. ft  
Counted as living area: No

Heated: No  
Finished: No  
Enclosed: No  
Contiguous: Yes  
Permitted: No  
Wet space: No  
Addition: No  
Conversion: No

**24** Floor 3 - Hall



Dimensions: 5'2" x 11'6"  
Area: 46 sq. ft  
Counted as living area: Yes

Heated: Yes  
Finished: Yes  
Enclosed: Yes  
Contiguous: Yes  
Permitted: Yes  
Wet space: No  
Addition: No  
Conversion: No