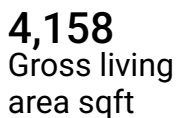
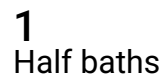
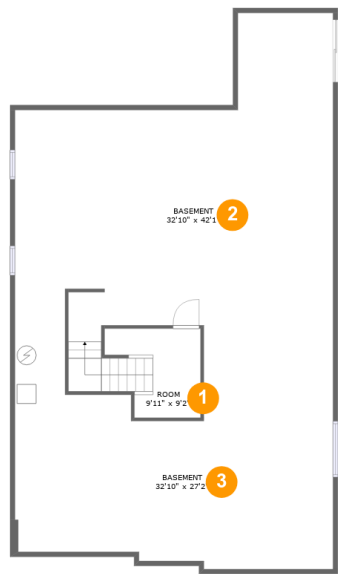


**14013 Smoky Bell Lane, North Potomac, Montgomery County,  
Maryland, United States, 20878**



Home report

14013 Smoky Bell Lane, North Potomac, Montgomery County,  
Maryland, United States, 20878



Room dimensions

Floor 1 Total sqft: 1719    Living area: 0

#		Dimensions	sqft	Counted as living area
1	Room	9'11" x 9'2"	138 sq. ft	No
2	Basement	32'10" x 42'1"	926 sq. ft	No
3	Basement	32'10" x 27'2"	562 sq. ft	No

Home report

14013 Smoky Bell Lane, North Potomac, Montgomery County,  
Maryland, United States, 20878



Room dimensions

Floor 2

Total sqft: 3145    Living area: 1771

#		Dimensions	sqft	Counted as living area
4	Hall	3'7" x 5'11"	21 sq. ft	Yes
5	Pantry	6'10" x 6'8"	46 sq. ft	Yes
6	Living Room	20'5" x 17'2"	311 sq. ft	Yes
7	Hall	6'2" x 7'0"	42 sq. ft	Yes
8	Covered Patio	23'7" x 10'11"	258 sq. ft	No
9	Dining Area	13'4" x 14'9"	197 sq. ft	Yes
10	Hall	5'3" x 10'11"	147 sq. ft	Yes
11	Kitchen	13'4" x 25'4"	315 sq. ft	Yes
12	Family Room	21'8" x 18'5"	411 sq. ft	Yes
13	Hall	9'10" x 10'7"	92 sq. ft	Yes
14	Porch	22'2" x 7'1"	149 sq. ft	No

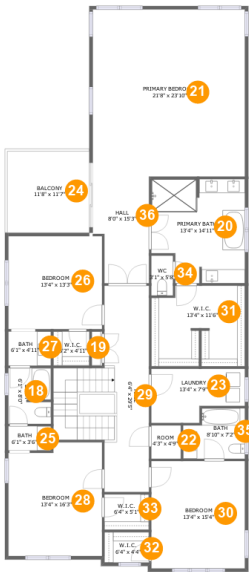
Home report

14013 Smoky Bell Lane, North Potomac, Montgomery County,  
Maryland, United States, 20878

#		Dimensions	sqft	Counted as living area
15	WC	6'1" x 8'0"	48 sq. ft	Yes
16	Patio	12'0" x 17'11"	228 sq. ft	No
17	Garage	32'6" x 20'11"	676 sq. ft	No

Home report

14013 Smoky Bell Lane, North Potomac, Montgomery County,  
Maryland, United States, 20878



Room dimensions

Floor 3

Total sqft: 2523

Living area: 2387

#		Dimensions	sqft	Counted as living area
18	Bath	6'1" x 8'0"	47 sq. ft	Yes
19	W.I.C.	5'2" x 4'11"	25 sq. ft	Yes
20	Primary Bath	13'4" x 14'11"	182 sq. ft	Yes
21	Primary Bedroom	21'8" x 23'10"	518 sq. ft	Yes
22	Room	4'3" x 4'9"	20 sq. ft	Yes
23	Laundry	13'4" x 7'9"	88 sq. ft	Yes
24	Balcony	11'8" x 11'7"	136 sq. ft	No
25	Bath	6'1" x 3'6"	21 sq. ft	Yes
26	Bedroom	13'4" x 13'3"	177 sq. ft	Yes
27	Bath	6'1" x 4'11"	30 sq. ft	Yes
28	Bedroom	13'4" x 16'3"	207 sq. ft	Yes

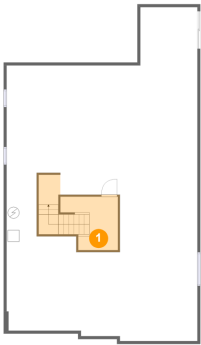
## Home report

**14013 Smoky Bell Lane, North Potomac, Montgomery County,  
Maryland, United States, 20878**

#		Dimensions	sqft	Counted as living area
29	Hall	6'4" x 29'5"	262 sq. ft	Yes
30	Bedroom	13'4" x 15'4"	205 sq. ft	Yes
31	W.I.C.	13'4" x 11'6"	145 sq. ft	Yes
32	W.I.C.	6'4" x 4'4"	28 sq. ft	Yes
33	W.I.C.	6'4" x 5'1"	32 sq. ft	Yes
34	WC	3'1" x 5'8"	18 sq. ft	Yes
35	Bath	8'10" x 7'2"	57 sq. ft	Yes
36	Hall	8'0" x 15'3"	110 sq. ft	Yes

14013 Smoky Bell Lane, North Potomac, Montgomery County,  
Maryland, United States, 20878

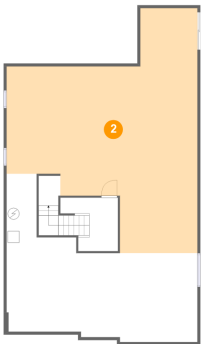
1 Floor 1 - Room



Dimensions: 9'11" x 9'2"  
Area: 138 sq. ft  
Counted as living area: No

Heated: Yes  
Finished: Yes  
Enclosed: Yes  
Contiguous: No  
Permitted: Yes  
Wet space: No  
Addition: No  
Conversion: No

2 Floor 1 - Basement

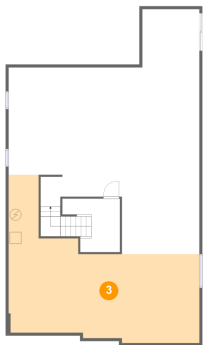


Dimensions: 32'10" x 42'1"  
Area: 926 sq. ft  
Counted as living area: No

Heated: Yes  
Finished: No  
Enclosed: Yes  
Contiguous: Yes  
Permitted: Yes  
Wet space: No  
Addition: No  
Conversion: No

14013 Smoky Bell Lane, North Potomac, Montgomery County,  
Maryland, United States, 20878

3 Floor 1 - Basement



Dimensions: 32'10" x 27'2"  
Area: 562 sq. ft  
Counted as living area: No

Heated: Yes  
Finished: No  
Enclosed: Yes  
Contiguous: Yes  
Permitted: Yes  
Wet space: No  
Addition: No  
Conversion: No

4 Floor 2 - Hall



Dimensions: 3'7" x 5'11"  
Area: 21 sq. ft  
Counted as living area: Yes

Heated: Yes  
Finished: Yes  
Enclosed: Yes  
Contiguous: Yes  
Permitted: Yes  
Wet space: No  
Addition: No  
Conversion: No

5 Floor 2 - Pantry



Dimensions: 6'10" x 6'8"  
Area: 46 sq. ft  
Counted as living area: Yes

Heated: Yes  
Finished: Yes  
Enclosed: Yes  
Contiguous: Yes  
Permitted: Yes  
Wet space: No  
Addition: No  
Conversion: No



14013 Smoky Bell Lane, North Potomac, Montgomery County,  
Maryland, United States, 20878

6 Floor 2 - Living Room



Dimensions: 20'5" x 17'2"  
Area: 311 sq. ft  
Counted as living area: Yes

Heated: Yes  
Finished: Yes  
Enclosed: Yes  
Contiguous: Yes  
Permitted: Yes  
Wet space: No  
Addition: No  
Conversion: No

7 Floor 2 - Hall



Dimensions: 6'2" x 7'0"  
Area: 42 sq. ft  
Counted as living area: Yes

Heated: Yes  
Finished: Yes  
Enclosed: Yes  
Contiguous: Yes  
Permitted: Yes  
Wet space: No  
Addition: No  
Conversion: No

8 Floor 2 - Covered Patio



Dimensions: 23'7" x 10'11"  
Area: 258 sq. ft  
Counted as living area: No

Heated: No  
Finished: Yes  
Enclosed: No  
Contiguous: Yes  
Permitted: Yes  
Wet space: No  
Addition: No  
Conversion: No

14013 Smoky Bell Lane, North Potomac, Montgomery County,  
Maryland, United States, 20878

9 Floor 2 - Dining Area



Dimensions: 13'4" x 14'9"  
Area: 197 sq. ft  
Counted as living area: Yes

Heated: Yes  
Finished: Yes  
Enclosed: Yes  
Contiguous: Yes  
Permitted: Yes  
Wet space: No  
Addition: No  
Conversion: No

10 Floor 2 - Hall



Dimensions: 5'3" x 10'11"  
Area: 147 sq. ft  
Counted as living area: Yes

Heated: Yes  
Finished: Yes  
Enclosed: Yes  
Contiguous: Yes  
Permitted: Yes  
Wet space: No  
Addition: No  
Conversion: No

11 Floor 2 - Kitchen



Dimensions: 13'4" x 25'4"  
Area: 315 sq. ft  
Counted as living area: Yes

Heated: Yes  
Finished: Yes  
Enclosed: Yes  
Contiguous: Yes  
Permitted: Yes  
Wet space: No  
Addition: No  
Conversion: No

14013 Smoky Bell Lane, North Potomac, Montgomery County,  
Maryland, United States, 20878

12 Floor 2 - Family Room



Dimensions: 21'8" x 18'5"  
Area: 411 sq. ft  
Counted as living area: Yes

Heated: Yes  
Finished: Yes  
Enclosed: Yes  
Contiguous: Yes  
Permitted: Yes  
Wet space: No  
Addition: No  
Conversion: No

13 Floor 2 - Hall



Dimensions: 9'10" x 10'7"  
Area: 92 sq. ft  
Counted as living area: Yes

Heated: Yes  
Finished: Yes  
Enclosed: Yes  
Contiguous: Yes  
Permitted: Yes  
Wet space: No  
Addition: No  
Conversion: No

14 Floor 2 - Porch



Dimensions: 22'2" x 7'1"  
Area: 149 sq. ft  
Counted as living area: No

Heated: No  
Finished: Yes  
Enclosed: No  
Contiguous: Yes  
Permitted: Yes  
Wet space: No  
Addition: No  
Conversion: No

14013 Smoky Bell Lane, North Potomac, Montgomery County,  
Maryland, United States, 20878

15 Floor 2 - WC



Dimensions: 6'1" x 8'0"  
Area: 48 sq. ft  
Counted as living area: Yes

Heated: Yes  
Finished: Yes  
Enclosed: Yes  
Contiguous: Yes  
Permitted: Yes  
Wet space: Yes  
Addition: No  
Conversion: No

16 Floor 2 - Patio



Dimensions: 12'0" x 17'11"  
Area: 228 sq. ft  
Counted as living area: No

Heated: No  
Finished: Yes  
Enclosed: No  
Contiguous: Yes  
Permitted: Yes  
Wet space: No  
Addition: No  
Conversion: No

17 Floor 2 - Garage



Dimensions: 32'6" x 20'11"  
Area: 676 sq. ft  
Counted as living area: No

Heated: No  
Finished: No  
Enclosed: Yes  
Contiguous: Yes  
Permitted: Yes  
Wet space: No  
Addition: No  
Conversion: No

18 Floor 3 - Bath



Dimensions: 6'1" x 8'0"  
Area: 47 sq. ft  
Counted as living area: Yes

Heated: Yes  
Finished: Yes  
Enclosed: Yes  
Contiguous: Yes  
Permitted: Yes  
Wet space: Yes  
Addition: No  
Conversion: No

19 Floor 3 - W.I.C.



Dimensions: 5'2" x 4'11"  
Area: 25 sq. ft  
Counted as living area: Yes

Heated: Yes  
Finished: Yes  
Enclosed: Yes  
Contiguous: Yes  
Permitted: Yes  
Wet space: No  
Addition: No  
Conversion: No

20 Floor 3 - Primary Bath



Dimensions: 13'4" x 14'11"  
Area: 182 sq. ft  
Counted as living area: Yes

Heated: Yes  
Finished: Yes  
Enclosed: Yes  
Contiguous: Yes  
Permitted: Yes  
Wet space: Yes  
Addition: No  
Conversion: No

14013 Smoky Bell Lane, North Potomac, Montgomery County,  
Maryland, United States, 20878

### 21 Floor 3 - Primary Bedroom



Dimensions: 21'8" x 23'10"  
Area: 518 sq. ft  
Counted as living area: Yes

Heated: Yes  
Finished: Yes  
Enclosed: Yes  
Contiguous: Yes  
Permitted: Yes  
Wet space: No  
Addition: No  
Conversion: No

### 22 Floor 3 - Room



Dimensions: 4'3" x 4'9"  
Area: 20 sq. ft  
Counted as living area: Yes

Heated: Yes  
Finished: Yes  
Enclosed: Yes  
Contiguous: Yes  
Permitted: Yes  
Wet space: No  
Addition: No  
Conversion: No

### 23 Floor 3 - Laundry



Dimensions: 13'4" x 7'9"  
Area: 88 sq. ft  
Counted as living area: Yes

Heated: Yes  
Finished: Yes  
Enclosed: Yes  
Contiguous: Yes  
Permitted: Yes  
Wet space: No  
Addition: No  
Conversion: No

14013 Smoky Bell Lane, North Potomac, Montgomery County,  
Maryland, United States, 20878

24 Floor 3 - Balcony



Dimensions: 11'8" x 11'7"  
Area: 136 sq. ft  
Counted as living area: No

Heated: No  
Finished: Yes  
Enclosed: No  
Contiguous: Yes  
Permitted: Yes  
Wet space: No  
Addition: No  
Conversion: No

25 Floor 3 - Bath



Dimensions: 6'1" x 3'6"  
Area: 21 sq. ft  
Counted as living area: Yes

Heated: Yes  
Finished: Yes  
Enclosed: Yes  
Contiguous: Yes  
Permitted: Yes  
Wet space: Yes  
Addition: No  
Conversion: No

26 Floor 3 - Bedroom



Dimensions: 13'4" x 13'3"  
Area: 177 sq. ft  
Counted as living area: Yes

Heated: Yes  
Finished: Yes  
Enclosed: Yes  
Contiguous: Yes  
Permitted: Yes  
Wet space: No  
Addition: No  
Conversion: No

27 Floor 3 - Bath



Dimensions: 6'1" x 4'11"  
Area: 30 sq. ft  
Counted as living area: Yes

Heated: Yes  
Finished: Yes  
Enclosed: Yes  
Contiguous: Yes  
Permitted: Yes  
Wet space: Yes  
Addition: No  
Conversion: No

28 Floor 3 - Bedroom



Dimensions: 13'4" x 16'3"  
Area: 207 sq. ft  
Counted as living area: Yes

Heated: Yes  
Finished: Yes  
Enclosed: Yes  
Contiguous: Yes  
Permitted: Yes  
Wet space: No  
Addition: No  
Conversion: No

29 Floor 3 - Hall



Dimensions: 6'4" x 29'5"  
Area: 262 sq. ft  
Counted as living area: Yes

Heated: Yes  
Finished: Yes  
Enclosed: Yes  
Contiguous: Yes  
Permitted: Yes  
Wet space: No  
Addition: No  
Conversion: No



14013 Smoky Bell Lane, North Potomac, Montgomery County,  
Maryland, United States, 20878

### 30 Floor 3 - Bedroom



Dimensions: 13'4" x 15'4"  
Area: 205 sq. ft  
Counted as living area: Yes

Heated: Yes  
Finished: Yes  
Enclosed: Yes  
Contiguous: Yes  
Permitted: Yes  
Wet space: No  
Addition: No  
Conversion: No

### 31 Floor 3 - W.I.C.



Dimensions: 13'4" x 11'6"  
Area: 145 sq. ft  
Counted as living area: Yes

Heated: Yes  
Finished: Yes  
Enclosed: Yes  
Contiguous: Yes  
Permitted: Yes  
Wet space: No  
Addition: No  
Conversion: No

### 32 Floor 3 - W.I.C.



Dimensions: 6'4" x 4'4"  
Area: 28 sq. ft  
Counted as living area: Yes

Heated: Yes  
Finished: Yes  
Enclosed: Yes  
Contiguous: Yes  
Permitted: Yes  
Wet space: No  
Addition: No  
Conversion: No

14013 Smoky Bell Lane, North Potomac, Montgomery County,  
Maryland, United States, 20878

33 Floor 3 - W.I.C.



Dimensions: 6'4" x 5'1"  
Area: 32 sq. ft  
Counted as living area: Yes

Heated: Yes  
Finished: Yes  
Enclosed: Yes  
Contiguous: Yes  
Permitted: Yes  
Wet space: No  
Addition: No  
Conversion: No

34 Floor 3 - WC



Dimensions: 3'1" x 5'8"  
Area: 18 sq. ft  
Counted as living area: Yes

Heated: Yes  
Finished: Yes  
Enclosed: Yes  
Contiguous: Yes  
Permitted: Yes  
Wet space: No  
Addition: No  
Conversion: No

35 Floor 3 - Bath



Dimensions: 8'10" x 7'2"  
Area: 57 sq. ft  
Counted as living area: Yes

Heated: Yes  
Finished: Yes  
Enclosed: Yes  
Contiguous: Yes  
Permitted: Yes  
Wet space: Yes  
Addition: No  
Conversion: No

14013 Smoky Bell Lane, North Potomac, Montgomery County,  
Maryland, United States, 20878

36 Floor 3 - Hall



Dimensions: 8'0" x 15'3"  
Area: 110 sq. ft  
Counted as living area: Yes

Heated: Yes  
Finished: Yes  
Enclosed: Yes  
Contiguous: Yes  
Permitted: Yes  
Wet space: No  
Addition: No  
Conversion: No