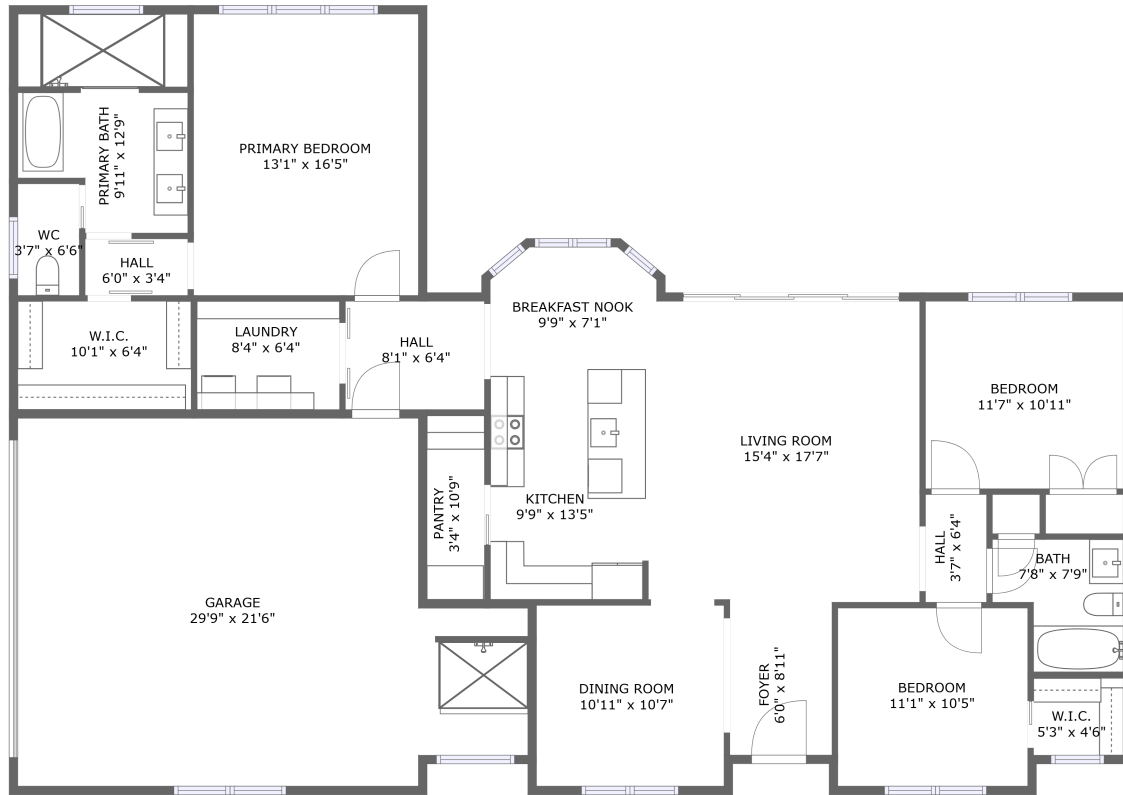



3740 Corbett Road, Mebane, Alamance County, North Carolina, United States, 27302




FLOOR 1

Property summary


 **1** Garages

 **3** Bedrooms

 **2** Bathrooms

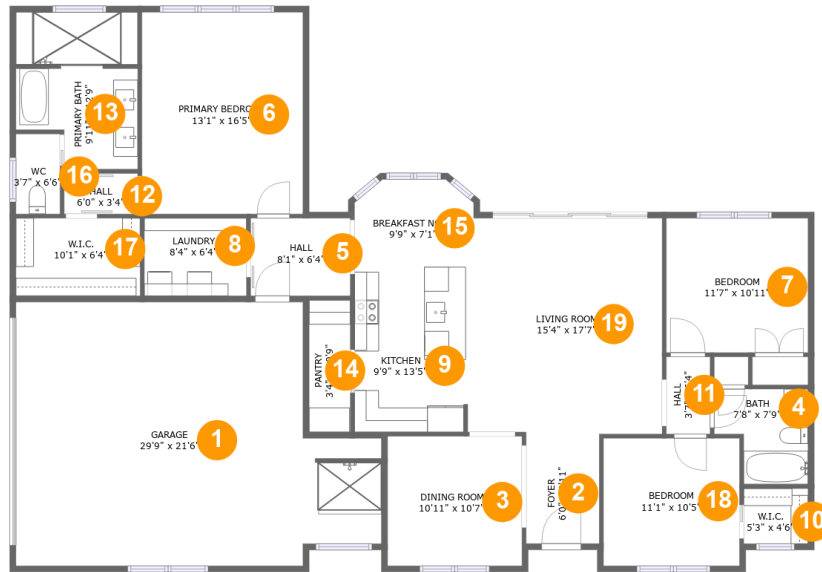
 **0** Half baths

 **1** Floors

 **1,743** Gross living area sqft

 **2,327** Total sqft

3740 Corbett Road, Mebane, Alamance County, North Carolina, United States, 27302



Room dimensions

Floor 1

Total sqft: 2327 Living area: 1743

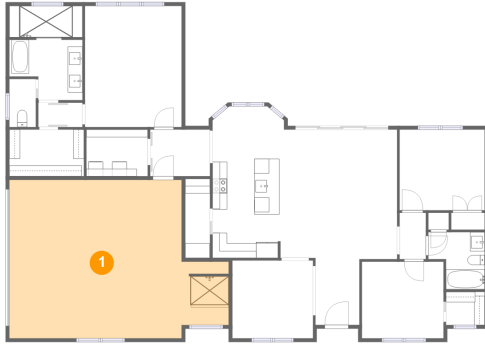
#		Dimensions	sqft	Counted as living area
1	Garage	29'9" x 21'6"	555 sq. ft	No
2	Foyer	6'0" x 8'11"	53 sq. ft	Yes
3	Dining Room	10'11" x 10'7"	116 sq. ft	Yes
4	Bath	7'8" x 7'9"	50 sq. ft	Yes
5	Hall	8'1" x 6'4"	51 sq. ft	Yes
6	Primary Bedroom	13'1" x 16'5"	216 sq. ft	Yes
7	Bedroom	11'7" x 10'11"	126 sq. ft	Yes
8	Laundry	8'4" x 6'4"	53 sq. ft	Yes
9	Kitchen	9'9" x 13'5"	130 sq. ft	Yes
10	W.I.C.	5'3" x 4'6"	24 sq. ft	Yes
11	Hall	3'7" x 6'4"	22 sq. ft	Yes

**3740 Corbett Road, Mebane, Alamance County, North
Carolina, United States, 27302**

#		Dimensions	sqft	Counted as living area
12	Hall	6'0" x 3'4"	20 sq. ft	Yes
13	Primary Bath	9'11" x 12'9"	112 sq. ft	Yes
14	Pantry	3'4" x 10'9"	36 sq. ft	Yes
15	Breakfast Nook	9'9" x 7'1"	65 sq. ft	Yes
16	WC	3'7" x 6'6"	23 sq. ft	Yes
17	W.I.C.	10'1" x 6'4"	64 sq. ft	Yes
18	Bedroom	11'1" x 10'5"	115 sq. ft	Yes
19	Living Room	15'4" x 17'7"	269 sq. ft	Yes

3740 Corbett Road, Mebane, Alamance County, North Carolina, United States, 27302

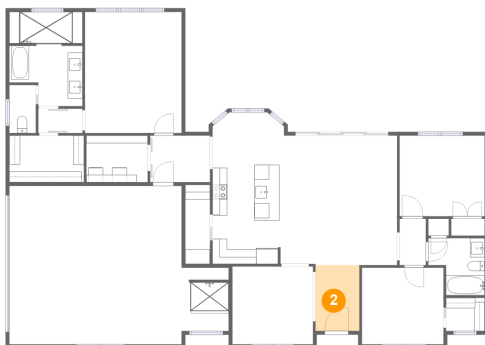
1 Floor 1 - Garage



Dimensions: 29'9" x 21'6"
Area: 555 sq. ft
Counted as living area: No

Heated: No
Finished: No
Enclosed: Yes
Contiguous: Yes
Permitted: Yes
Wet space: No
Addition: No
Conversion: No

2 Floor 1 - Foyer



Dimensions: 6'0" x 8'11"
Area: 53 sq. ft
Counted as living area: Yes

Heated: Yes
Finished: Yes
Enclosed: Yes
Contiguous: Yes
Permitted: Yes
Wet space: No
Addition: No
Conversion: No

3740 Corbett Road, Mebane, Alamance County, North Carolina, United States, 27302

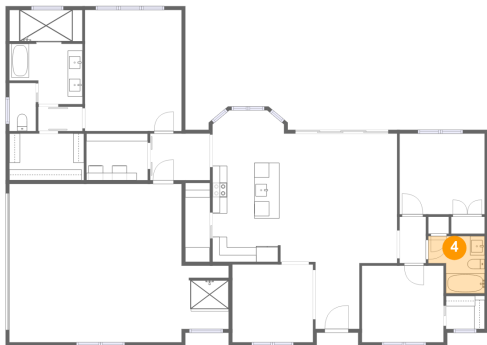
3 Floor 1 - Dining Room



Dimensions: 10'11" x 10'7"
Area: 116 sq. ft
Counted as living area: Yes

Heated: Yes
Finished: Yes
Enclosed: Yes
Contiguous: Yes
Permitted: Yes
Wet space: No
Addition: No
Conversion: No

4 Floor 1 - Bath



Dimensions: 7'8" x 7'9"
Area: 50 sq. ft
Counted as living area: Yes

Heated: Yes
Finished: Yes
Enclosed: Yes
Contiguous: Yes
Permitted: Yes
Wet space: Yes
Addition: No
Conversion: No

5 Floor 1 - Hall

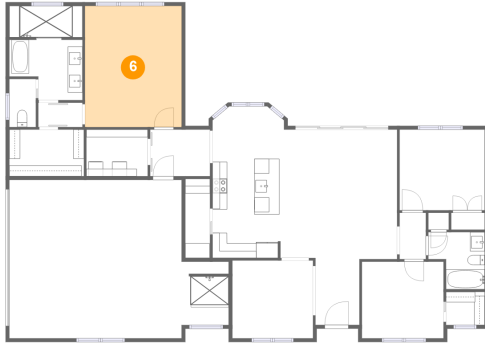


Dimensions: 8'1" x 6'4"
Area: 51 sq. ft
Counted as living area: Yes

Heated: Yes
Finished: Yes
Enclosed: Yes
Contiguous: Yes
Permitted: Yes
Wet space: No
Addition: No
Conversion: No

3740 Corbett Road, Mebane, Alamance County, North Carolina, United States, 27302

6 Floor 1 - Primary Bedroom



Dimensions: 13'1" x 16'5"
Area: 216 sq. ft
Counted as living area: Yes

Heated: Yes
Finished: Yes
Enclosed: Yes
Contiguous: Yes
Permitted: Yes
Wet space: No
Addition: No
Conversion: No

7 Floor 1 - Bedroom



Dimensions: 11'7" x 10'11"
Area: 126 sq. ft
Counted as living area: Yes

Heated: Yes
Finished: Yes
Enclosed: Yes
Contiguous: Yes
Permitted: Yes
Wet space: No
Addition: No
Conversion: No

8 Floor 1 - Laundry

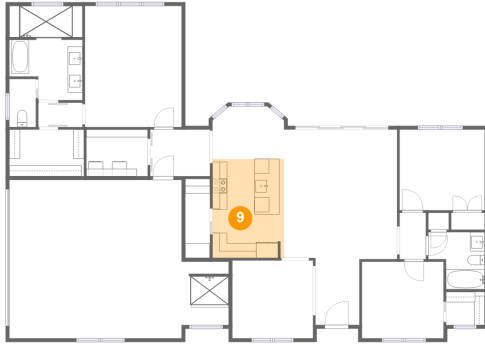


Dimensions: 8'4" x 6'4"
Area: 53 sq. ft
Counted as living area: Yes

Heated: Yes
Finished: Yes
Enclosed: Yes
Contiguous: Yes
Permitted: Yes
Wet space: No
Addition: No
Conversion: No

3740 Corbett Road, Mebane, Alamance County, North Carolina, United States, 27302

9 Floor 1 - Kitchen



Dimensions: 9'9" x 13'5"
Area: 130 sq. ft
Counted as living area: Yes

Heated: Yes
Finished: Yes
Enclosed: Yes
Contiguous: Yes
Permitted: Yes
Wet space: No
Addition: No
Conversion: No

10 Floor 1 - W.I.C.



Dimensions: 5'3" x 4'6"
Area: 24 sq. ft
Counted as living area: Yes

Heated: Yes
Finished: Yes
Enclosed: Yes
Contiguous: Yes
Permitted: Yes
Wet space: No
Addition: No
Conversion: No

11 Floor 1 - Hall



Dimensions: 3'7" x 6'4"
Area: 22 sq. ft
Counted as living area: Yes

Heated: Yes
Finished: Yes
Enclosed: Yes
Contiguous: Yes
Permitted: Yes
Wet space: No
Addition: No
Conversion: No

3740 Corbett Road, Mebane, Alamance County, North Carolina, United States, 27302

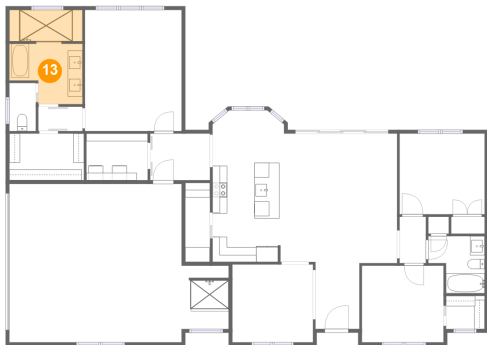
12 Floor 1 - Hall



Dimensions: 6'0" x 3'4"
Area: 20 sq. ft
Counted as living area: Yes

Heated: Yes
Finished: Yes
Enclosed: Yes
Contiguous: Yes
Permitted: Yes
Wet space: No
Addition: No
Conversion: No

13 Floor 1 - Primary Bath



Dimensions: 9'11" x 12'9"
Area: 112 sq. ft
Counted as living area: Yes

Heated: Yes
Finished: Yes
Enclosed: Yes
Contiguous: Yes
Permitted: Yes
Wet space: Yes
Addition: No
Conversion: No

14 Floor 1 - Pantry



Dimensions: 3'4" x 10'9"
Area: 36 sq. ft
Counted as living area: Yes

Heated: Yes
Finished: Yes
Enclosed: Yes
Contiguous: Yes
Permitted: Yes
Wet space: No
Addition: No
Conversion: No

3740 Corbett Road, Mebane, Alamance County, North Carolina, United States, 27302

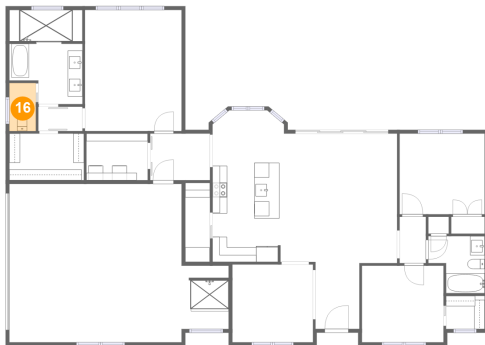
15 Floor 1 - Breakfast Nook



Dimensions: 9'9" x 7'1"
Area: 65 sq. ft
Counted as living area: Yes

Heated: Yes
Finished: Yes
Enclosed: Yes
Contiguous: Yes
Permitted: Yes
Wet space: No
Addition: No
Conversion: No

16 Floor 1 - WC



Dimensions: 3'7" x 6'6"
Area: 23 sq. ft
Counted as living area: Yes

Heated: Yes
Finished: Yes
Enclosed: Yes
Contiguous: Yes
Permitted: Yes
Wet space: Yes
Addition: No
Conversion: No

17 Floor 1 - W.I.C.



Dimensions: 10'1" x 6'4"
Area: 64 sq. ft
Counted as living area: Yes

Heated: Yes
Finished: Yes
Enclosed: Yes
Contiguous: Yes
Permitted: Yes
Wet space: No
Addition: No
Conversion: No

3740 Corbett Road, Mebane, Alamance County, North Carolina, United States, 27302

18 Floor 1 - Bedroom



Dimensions: 11'1" x 10'5"
Area: 115 sq. ft
Counted as living area: Yes

Heated: Yes
Finished: Yes
Enclosed: Yes
Contiguous: Yes
Permitted: Yes
Wet space: No
Addition: No
Conversion: No

19 Floor 1 - Living Room



Dimensions: 15'4" x 17'7"
Area: 269 sq. ft
Counted as living area: Yes

Heated: Yes
Finished: Yes
Enclosed: Yes
Contiguous: Yes
Permitted: Yes
Wet space: No
Addition: No
Conversion: No