

38 Marchvale Drive, Carp, Kanata, Ontario, Canada, K2W 1C2

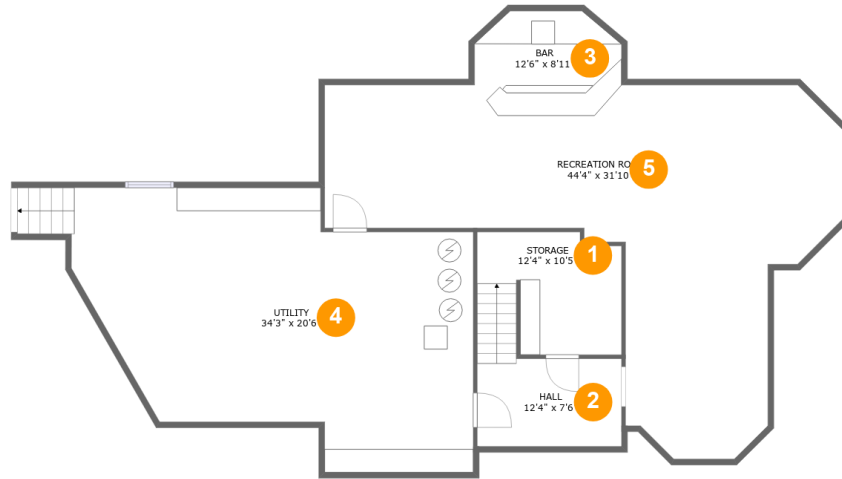


Property Summary

1 garages **4** bedrooms **3** bathrooms **1** half baths

3 floors **4,793** Gross Living Area sqft **6,545** total sqft

38 Marchvale Drive, Carp, Kanata, Ontario, Canada, K2W 1C2



Room Dimensions

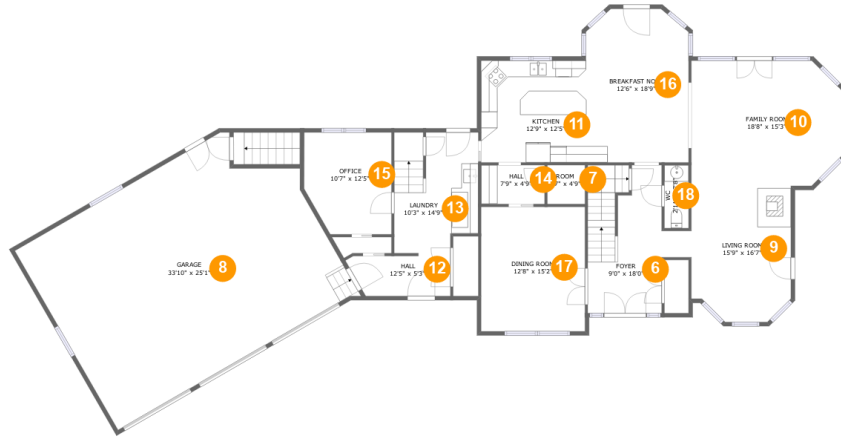
Floor 1

Total sqft: 1849

Living area: 1045

#	Room name	Dimensions	Area (sqft)	Counted as Living Area
1	Storage	12'4" x 10'5"	102 sq. ft	No
2	Hall	12'4" x 7'6"	113 sq. ft	Yes
3	Bar	12'6" x 8'11"	97 sq. ft	Yes
4	Utility	34'3" x 20'6"	657 sq. ft	No
5	Recreation Room	44'4" x 31'10"	748 sq. ft	Yes

38 Marchvale Drive, Carp, Kanata, Ontario, Canada, K2W 1C2



Room Dimensions

Floor 2

Total sqft: 2735

Living area: 1826

#	Room name	Dimensions	Area (sqft)	Counted as Living Area
6	Foyer	9'0" x 18'0"	159 sq. ft	Yes
7	Room	4'7" x 4'9"	22 sq. ft	Yes
8	Garage	33'10" x 25'1"	821 sq. ft	No
9	Living Room	15'9" x 16'7"	201 sq. ft	Yes
10	Family Room	18'8" x 15'3"	269 sq. ft	Yes
11	Kitchen	12'9" x 12'5"	158 sq. ft	Yes
12	Hall	12'5" x 5'3"	58 sq. ft	Yes
13	Laundry	10'3" x 14'9"	141 sq. ft	Yes
14	Hall	7'9" x 4'9"	37 sq. ft	Yes
15	Office	10'7" x 12'5"	123 sq. ft	Yes
16	Breakfast Nook	12'6" x 18'9"	225 sq. ft	Yes

Scan captured on Fri, 25 Oct 2024 16:26:51 GMT

Information is calculated by CubiCasa technology; deemed highly reliable but not guaranteed.

**38 Marchvale Drive, Carp, Kanata, Ontario,
Canada, K2W 1C2**

#	Room name	Dimensions	Area (sqft)	Counted as Living Area
17	Dining Room	12'8" x 15'2"	192 sq. ft	Yes
18	Wc	2'11" x 7'8"	23 sq. ft	Yes

38 Marchvale Drive, Carp, Kanata, Ontario, Canada, K2W 1C2



Room Dimensions

Floor 3

Total sqft: 1961

Living area: 1922

#	Room name	Dimensions	Area (sqft)	Counted as Living Area
19	Bath	10'7" x 5'6"	58 sq. ft	Yes
20	Bedroom	12'8" x 14'2"	190 sq. ft	Yes
21	Primary Bedroom	15'5" x 20'8"	258 sq. ft	Yes
22	Hall	12'1" x 6'5"	95 sq. ft	Yes
23	Open To Below	5'4" x 7'4"	39 sq. ft	No
24	W.i.c.	9'2" x 5'0"	46 sq. ft	Yes
25	Hall	21'1" x 6'2"	139 sq. ft	Yes
26	Room	10'7" x 9'11"	113 sq. ft	Yes
27	Bedroom	21'7" x 25'1"	324 sq. ft	Yes
28	Hall	12'0" x 5'10"	56 sq. ft	Yes
29	Primary Bath	13'5" x 9'4"	106 sq. ft	Yes

Scan captured on Fri, 25 Oct 2024 16:26:51 GMT

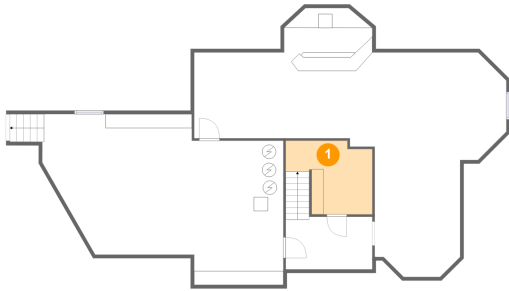
Information is calculated by CubiCasa technology; deemed highly reliable but not guaranteed.

**38 Marchvale Drive, Carp, Kanata, Ontario,
Canada, K2W 1C2**

#	Room name	Dimensions	Area (sqft)	Counted as Living Area
30	Bath	6'9" x 9'11"	49 sq. ft	Yes
31	Wc	5'3" x 2'10"	15 sq. ft	Yes
32	Bedroom	11'7" x 13'6"	145 sq. ft	Yes
33	W.i.c.	5'11" x 14'4"	75 sq. ft	Yes

38 Marchvale Drive, Carp, Kanata, Ontario, Canada, K2W 1C2

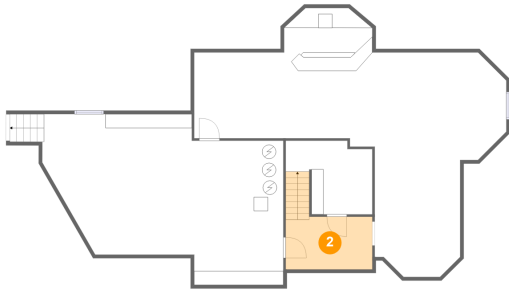
1 Floor 1 - Storage



Dimensions: 12'4" x 10'5"
Area: 102 sq. ft
Counted as Living Area: No

Heated: No
Finished: No
Enclosed: No
Contiguous: Yes
Permitted: Yes
Wet Space: No
Addition: No
Conversion: No

2 Floor 1 - Hall

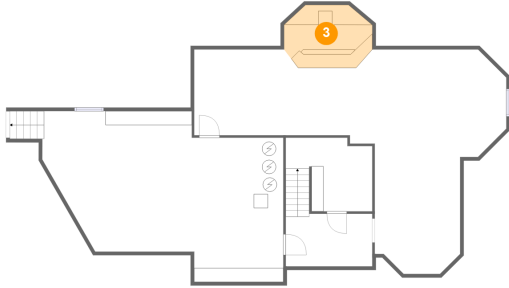


Dimensions: 12'4" x 7'6"
Area: 113 sq. ft
Counted as Living Area:
Yes

Heated: Yes
Finished: Yes
Enclosed: Yes
Contiguous:
Yes
Permitted: Yes
Wet Space: No
Addition: No
Conversion: No

38 Marchvale Drive, Carp, Kanata, Ontario, Canada, K2W 1C2

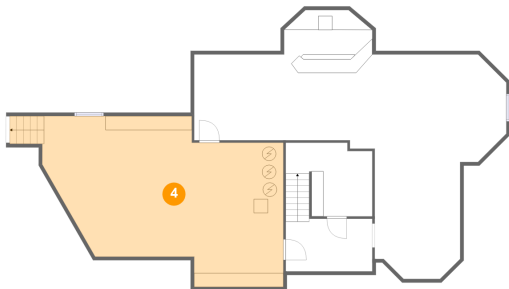
3 Floor 1 - Bar



Dimensions: 12'6" x 8'11"
Area: 97 sq. ft
Counted as Living Area:
Yes

Heated: Yes
Finished: Yes
Enclosed: Yes
Contiguous:
Yes
Permitted: Yes
Wet Space: No
Addition: No
Conversion: No

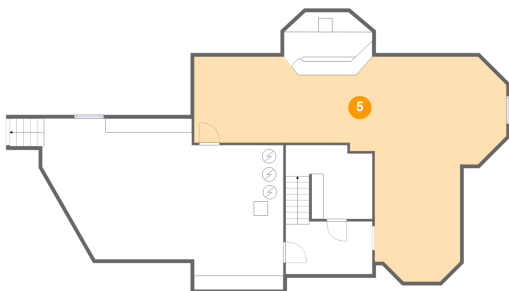
4 Floor 1 - Utility



Dimensions: 34'3" x 20'6"
Area: 657 sq. ft
Counted as Living Area: No

Heated: Yes
Finished: No
Enclosed: Yes
Contiguous: Yes
Permitted: Yes
Wet Space: No
Addition: No
Conversion: No

5 Floor 1 - Recreation Room

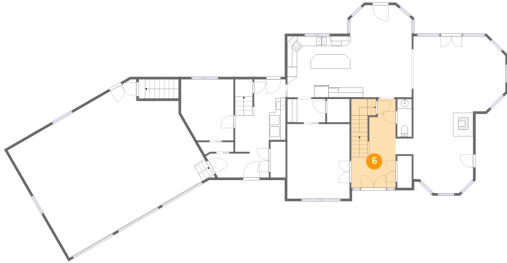


Dimensions: 44'4" x 31'10"
Area: 748 sq. ft
Counted as Living Area:
Yes

Heated: Yes
Finished: Yes
Enclosed: Yes
Contiguous:
Yes
Permitted: Yes
Wet Space: No
Addition: No
Conversion: No

38 Marchvale Drive, Carp, Kanata, Ontario, Canada, K2W 1C2

6 Floor 2 - Foyer



Dimensions: 9'0" x 18'0"
Area: 159 sq. ft
Counted as Living Area:
Yes

Heated: Yes
Finished: Yes
Enclosed: Yes
Contiguous:
Yes
Permitted: Yes
Wet Space: No
Addition: No
Conversion: No

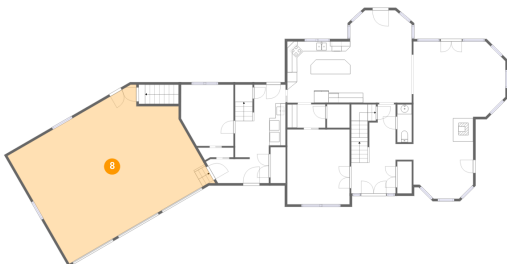
7 Floor 2 - Room



Dimensions: 4'7" x 4'9"
Area: 22 sq. ft
Counted as Living Area:
Yes

Heated: Yes
Finished: Yes
Enclosed: Yes
Contiguous:
Yes
Permitted: Yes
Wet Space: No
Addition: No
Conversion: No

8 Floor 2 - Garage

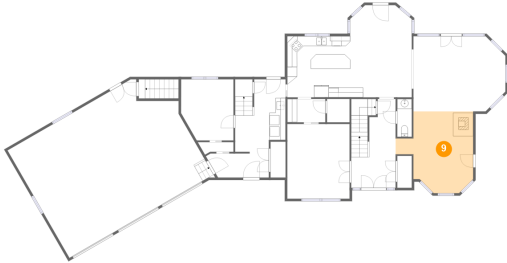


Dimensions: 33'10" x 25'1"
Area: 821 sq. ft
Counted as Living Area: No

Heated: No
Finished: No
Enclosed: Yes
Contiguous: Yes
Permitted: Yes
Wet Space: No
Addition: No
Conversion: No

38 Marchvale Drive, Carp, Kanata, Ontario, Canada, K2W 1C2

9 Floor 2 - Living Room



Dimensions: 15'9" x 16'7"
Area: 201 sq. ft
Counted as Living Area:
Yes

Heated: Yes
Finished: Yes
Enclosed: Yes
Contiguous:
Yes
Permitted: Yes
Wet Space: No
Addition: No
Conversion: No

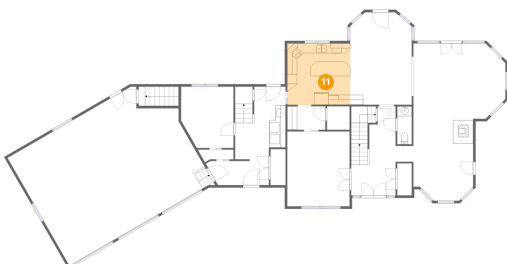
10 Floor 2 - Family Room



Dimensions: 18'8" x 15'3"
Area: 269 sq. ft
Counted as Living Area:
Yes

Heated: Yes
Finished: Yes
Enclosed: Yes
Contiguous:
Yes
Permitted: Yes
Wet Space: No
Addition: No
Conversion: No

11 Floor 2 - Kitchen

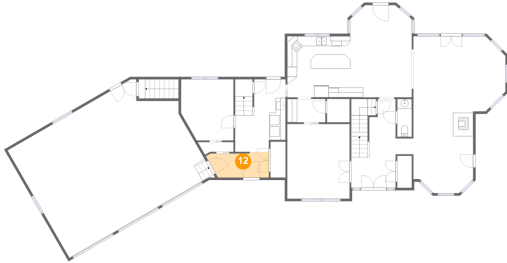


Dimensions: 12'9" x 12'5"
Area: 158 sq. ft
Counted as Living Area:
Yes

Heated: Yes
Finished: Yes
Enclosed: Yes
Contiguous:
Yes
Permitted: Yes
Wet Space: No
Addition: No
Conversion: No

38 Marchvale Drive, Carp, Kanata, Ontario, Canada, K2W 1C2

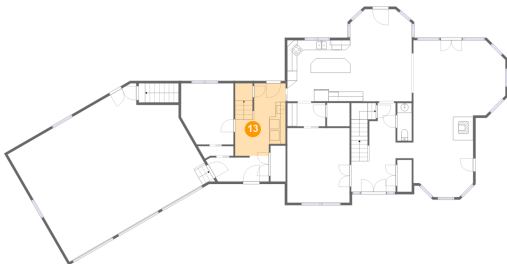
12 Floor 2 - Hall



Dimensions: 12'5" x 5'3"
Area: 58 sq. ft
Counted as Living Area:
Yes

Heated: Yes
Finished: Yes
Enclosed: Yes
Contiguous:
Yes
Permitted: Yes
Wet Space: No
Addition: No
Conversion: No

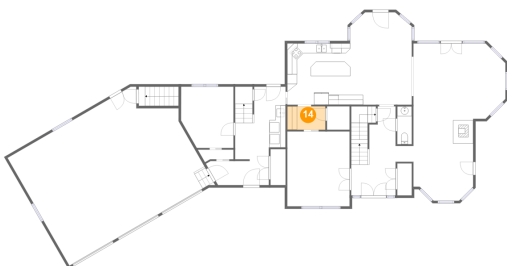
13 Floor 2 - Laundry



Dimensions: 10'3" x 14'9"
Area: 141 sq. ft
Counted as Living Area:
Yes

Heated: Yes
Finished: Yes
Enclosed: Yes
Contiguous:
Yes
Permitted: Yes
Wet Space: No
Addition: No
Conversion: No

14 Floor 2 - Hall

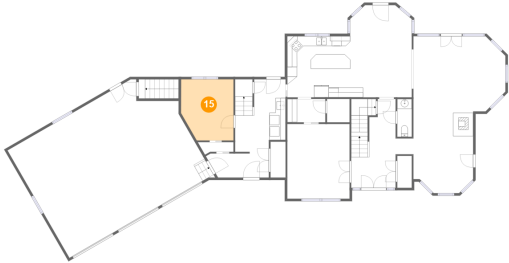


Dimensions: 7'9" x 4'9"
Area: 37 sq. ft
Counted as Living Area:
Yes

Heated: Yes
Finished: Yes
Enclosed: Yes
Contiguous:
Yes
Permitted: Yes
Wet Space: No
Addition: No
Conversion: No

38 Marchvale Drive, Carp, Kanata, Ontario, Canada, K2W 1C2

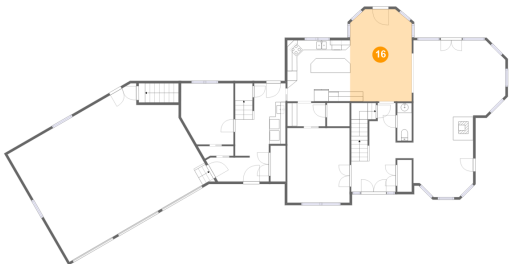
15 Floor 2 - Office



Dimensions: 10'7" x 12'5"
Area: 123 sq. ft
Counted as Living Area:
Yes

Heated: Yes
Finished: Yes
Enclosed: Yes
Contiguous:
Yes
Permitted: Yes
Wet Space: No
Addition: No
Conversion: No

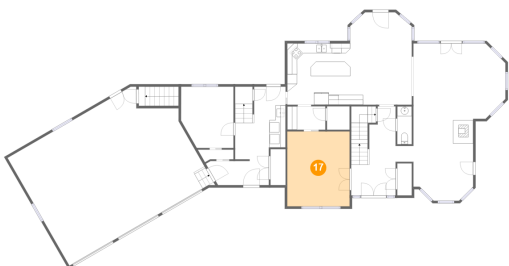
16 Floor 2 - Breakfast Nook



Dimensions: 12'6" x 18'9"
Area: 225 sq. ft
Counted as Living Area:
Yes

Heated: Yes
Finished: Yes
Enclosed: Yes
Contiguous:
Yes
Permitted: Yes
Wet Space: No
Addition: No
Conversion: No

17 Floor 2 - Dining Room

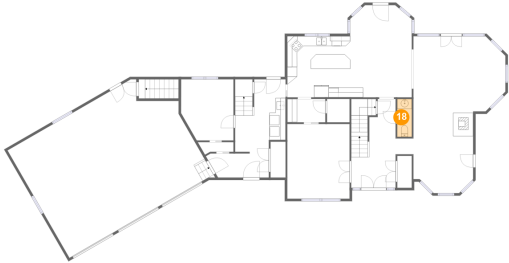


Dimensions: 12'8" x 15'2"
Area: 192 sq. ft
Counted as Living Area:
Yes

Heated: Yes
Finished: Yes
Enclosed: Yes
Contiguous:
Yes
Permitted: Yes
Wet Space: No
Addition: No
Conversion: No

38 Marchvale Drive, Carp, Kanata, Ontario, Canada, K2W 1C2

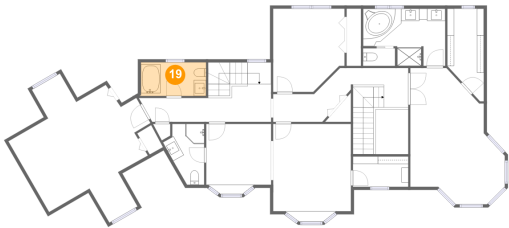
18 Floor 2 - Wc



Dimensions: 2'11" x 7'8"
Area: 23 sq. ft
Counted as Living Area:
Yes

Heated: Yes
Finished: Yes
Enclosed: Yes
Contiguous:
Yes
Permitted: Yes
Wet Space: Yes
Addition: No
Conversion: No

19 Floor 3 - Bath



Dimensions: 10'7" x 5'6"
Area: 58 sq. ft
Counted as Living Area:
Yes

Heated: Yes
Finished: Yes
Enclosed: Yes
Contiguous:
Yes
Permitted: Yes
Wet Space: Yes
Addition: No
Conversion: No

20 Floor 3 - Bedroom

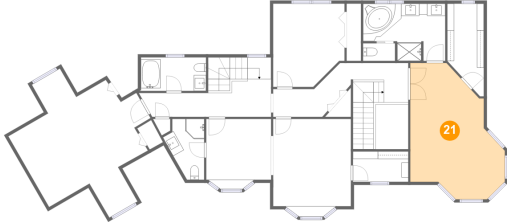


Dimensions: 12'8" x 14'2"
Area: 190 sq. ft
Counted as Living Area:
Yes

Heated: Yes
Finished: Yes
Enclosed: Yes
Contiguous:
Yes
Permitted: Yes
Wet Space: No
Addition: No
Conversion: No

38 Marchvale Drive, Carp, Kanata, Ontario, Canada, K2W 1C2

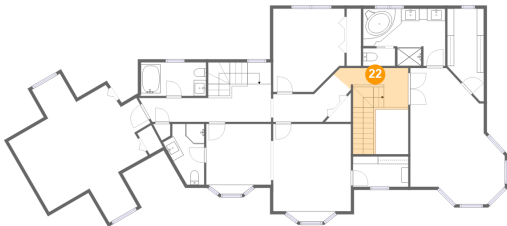
21 Floor 3 - Primary Bedroom



Dimensions: 15'5" x 20'8"
Area: 258 sq. ft
Counted as Living Area:
Yes

Heated: Yes
Finished: Yes
Enclosed: Yes
Contiguous:
Yes
Permitted: Yes
Wet Space: No
Addition: No
Conversion: No

22 Floor 3 - Hall



Dimensions: 12'1" x 6'5"
Area: 95 sq. ft
Counted as Living Area:
Yes

Heated: Yes
Finished: Yes
Enclosed: Yes
Contiguous:
Yes
Permitted: Yes
Wet Space: No
Addition: No
Conversion: No

23 Floor 3 - Open To Below



Dimensions: 5'4" x 7'4"
Area: 39 sq. ft
Counted as Living Area: No

Heated: No
Finished: No
Enclosed: No
Contiguous: Yes
Permitted: No
Wet Space: No
Addition: No
Conversion: No

38 Marchvale Drive, Carp, Kanata, Ontario, Canada, K2W 1C2

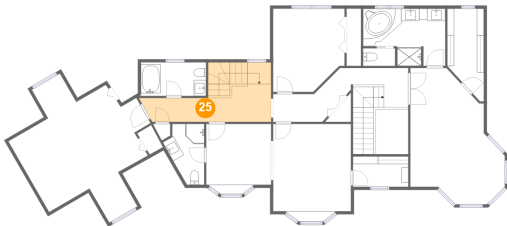
24 Floor 3 - W.i.c.



Dimensions: 9'2" x 5'0"
Area: 46 sq. ft
Counted as Living Area:
Yes

Heated: Yes
Finished: Yes
Enclosed: Yes
Contiguous:
Yes
Permitted: Yes
Wet Space: No
Addition: No
Conversion: No

25 Floor 3 - Hall



Dimensions: 21'1" x 6'2"
Area: 139 sq. ft
Counted as Living Area:
Yes

Heated: Yes
Finished: Yes
Enclosed: Yes
Contiguous:
Yes
Permitted: Yes
Wet Space: No
Addition: No
Conversion: No

26 Floor 3 - Room



Dimensions: 10'7" x 9'11"
Area: 113 sq. ft
Counted as Living Area:
Yes

Heated: Yes
Finished: Yes
Enclosed: Yes
Contiguous:
Yes
Permitted: Yes
Wet Space: No
Addition: No
Conversion: No

38 Marchvale Drive, Carp, Kanata, Ontario, Canada, K2W 1C2

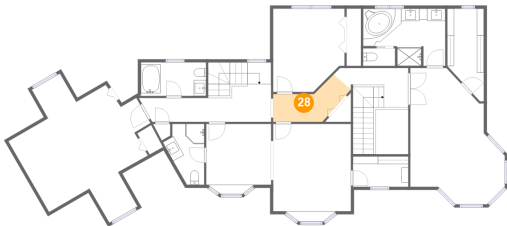
27 Floor 3 - Bedroom



Dimensions: 21'7" x 25'1"
Area: 324 sq. ft
Counted as Living Area:
Yes

Heated: Yes
Finished: Yes
Enclosed: Yes
Contiguous:
Yes
Permitted: Yes
Wet Space: No
Addition: No
Conversion: No

28 Floor 3 - Hall



Dimensions: 12'0" x 5'10"
Area: 56 sq. ft
Counted as Living Area:
Yes

Heated: Yes
Finished: Yes
Enclosed: Yes
Contiguous:
Yes
Permitted: Yes
Wet Space: No
Addition: No
Conversion: No

29 Floor 3 - Primary Bath



Dimensions: 13'5" x 9'4"
Area: 106 sq. ft
Counted as Living Area:
Yes

Heated: Yes
Finished: Yes
Enclosed: Yes
Contiguous:
Yes
Permitted: Yes
Wet Space: Yes
Addition: No
Conversion: No

38 Marchvale Drive, Carp, Kanata, Ontario, Canada, K2W 1C2

30 Floor 3 - Bath



Dimensions: 6'9" x 9'11"
Area: 49 sq. ft
Counted as Living Area:
Yes

Heated: Yes
Finished: Yes
Enclosed: Yes
Contiguous:
Yes
Permitted: Yes
Wet Space: Yes
Addition: No
Conversion: No

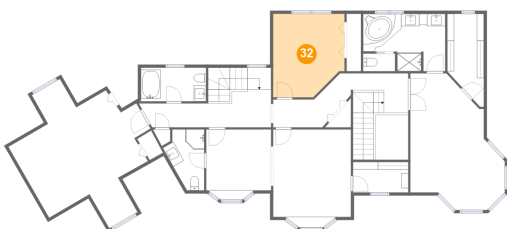
31 Floor 3 - Wc



Dimensions: 5'3" x 2'10"
Area: 15 sq. ft
Counted as Living Area:
Yes

Heated: Yes
Finished: Yes
Enclosed: Yes
Contiguous:
Yes
Permitted: Yes
Wet Space: Yes
Addition: No
Conversion: No

32 Floor 3 - Bedroom

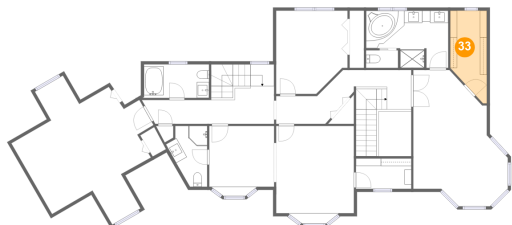


Dimensions: 11'7" x 13'6"
Area: 145 sq. ft
Counted as Living Area:
Yes

Heated: Yes
Finished: Yes
Enclosed: Yes
Contiguous:
Yes
Permitted: Yes
Wet Space: No
Addition: No
Conversion: No

38 Marchvale Drive, Carp, Kanata, Ontario, Canada, K2W 1C2

33 Floor 3 - W.i.c.



Dimensions: 5'11" x 14'4"
Area: 75 sq. ft
Counted as Living Area:
Yes

Heated: Yes
Finished: Yes
Enclosed: Yes
Contiguous:
Yes
Permitted: Yes
Wet Space: No
Addition: No
Conversion: No