

Home report

1724 Derrs Square East, Dearbought, Frederick, Frederick
County, Maryland, United States, 21701



Total Area: 1848 sq. ft

Below Ground: 498 sq. ft, Floor 2: 721 sq. ft, Floor 3: 629 sq. ft

Excluded: Storage 169 sq. ft, Utility 56 sq. ft, Fireplace 12 sq. ft, Walls: 173 sq. ft

Property summary

 **3** Floors

 **2** Bedrooms

 **2** Bathrooms

 **1** Half baths

Home report

1724 Derrs Square East, Dearbought, Frederick, Frederick
County, Maryland, United States, 21701



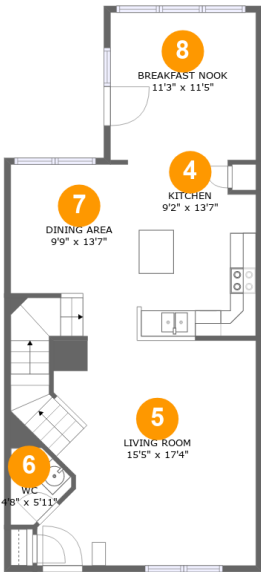
Room dimensions

Floor 1 Below ground Total:498sqft Excluded: 237sqft

#		Max Dimensions	sqft	Included
1	Utility	5'7" x 9'8"	56 sq. ft	No
2	Storage	19'0" x 10'10"	169 sq. ft	No
3	Recreation Room	15'1" x 34'2"	478 sq. ft	Yes

Home report

1724 Derrs Square East, Dearbought, Frederick, Frederick
County, Maryland, United States, 21701



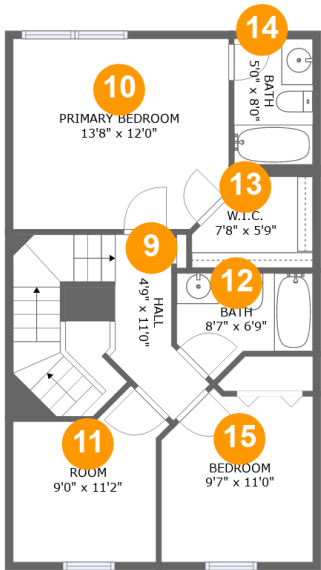
Room dimensions

Floor 2 Total:721sqft Excluded: 0sqft

#		Max Dimensions	sqft	Included
4	Kitchen	9'2" x 13'7"	121 sq. ft	Yes
5	Living Room	15'5" x 17'4"	296 sq. ft	Yes
6	WC	4'8" x 5'11"	24 sq. ft	Yes
7	Dining Area	9'9" x 13'7"	132 sq. ft	Yes
8	Breakfast Nook	11'3" x 11'5"	128 sq. ft	Yes

Home report

1724 Derrs Square East, Dearbought, Frederick, Frederick
County, Maryland, United States, 21701



Room dimensions

Floor 3 Total:629sqft Excluded: 0sqft

#		Max Dimensions	sqft	Included
9	Hall	4'9" x 11'0"	114 sq. ft	Yes
10	Primary Bedroom	13'8" x 12'0"	161 sq. ft	Yes
11	Room	9'0" x 11'2"	86 sq. ft	Yes
12	Bath	8'7" x 6'9"	46 sq. ft	Yes
13	W.I.C.	7'8" x 5'9"	38 sq. ft	Yes
14	Bath	5'0" x 8'0"	40 sq. ft	Yes
15	Bedroom	9'7" x 11'0"	97 sq. ft	Yes

1724 Derrs Square East, Dearbought, Frederick, Frederick
County, Maryland, United States, 21701

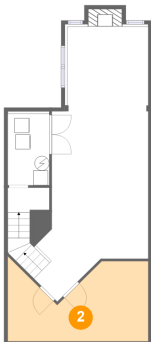
1 Floor 1 - Utility



Max Dimensions: 5'7" x 9'8"
Calculated Area: 56 sq. ft
Included: No

Heated: Yes
Finished: No
Enclosed: Yes
Contiguous: Yes
Permitted: Yes
Wet space: No
Addition: No
Conversion: No

2 Floor 1 - Storage



Max Dimensions: 19'0" x 10'10"
Calculated Area: 169 sq. ft
Included: No

Heated: No
Finished: No
Enclosed: No
Contiguous: Yes
Permitted: Yes
Wet space: No
Addition: No
Conversion: No

1724 Derrs Square East, Dearbought, Frederick, Frederick
County, Maryland, United States, 21701

3 Floor 1 - Recreation Room



Max Dimensions: 15'1" x 34'2"
Calculated Area: 478 sq. ft
Included: Yes

Heated: Yes
Finished: Yes
Enclosed: Yes
Contiguous: Yes
Permitted: Yes
Wet space: No
Addition: No
Conversion: No

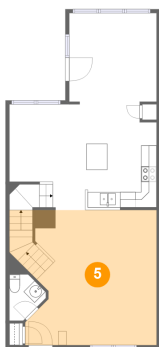
4 Floor 2 - Kitchen



Max Dimensions: 9'2" x 13'7"
Calculated Area: 121 sq. ft
Included: Yes

Heated: Yes
Finished: Yes
Enclosed: Yes
Contiguous: Yes
Permitted: Yes
Wet space: No
Addition: No
Conversion: No

5 Floor 2 - Living Room



Max Dimensions: 15'5" x 17'4"
Calculated Area: 296 sq. ft
Included: Yes

Heated: Yes
Finished: Yes
Enclosed: Yes
Contiguous: Yes
Permitted: Yes
Wet space: No
Addition: No
Conversion: No

1724 Derrs Square East, Dearbought, Frederick, Frederick
County, Maryland, United States, 21701

6 Floor 2 - WC



Max Dimensions: 4'8" x 5'11"
Calculated Area: 24 sq. ft
Included: Yes

Heated: Yes
Finished: Yes
Enclosed: Yes
Contiguous: Yes
Permitted: Yes
Wet space: Yes
Addition: No
Conversion: No

7 Floor 2 - Dining Area



Max Dimensions: 9'9" x 13'7"
Calculated Area: 132 sq. ft
Included: Yes

Heated: Yes
Finished: Yes
Enclosed: Yes
Contiguous: Yes
Permitted: Yes
Wet space: No
Addition: No
Conversion: No

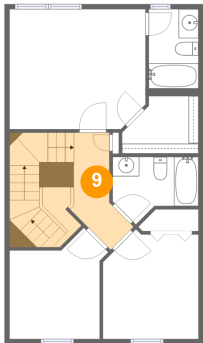
8 Floor 2 - Breakfast Nook



Max Dimensions: 11'3" x 11'5"
Calculated Area: 128 sq. ft
Included: Yes

Heated: Yes
Finished: Yes
Enclosed: Yes
Contiguous: Yes
Permitted: Yes
Wet space: No
Addition: No
Conversion: No

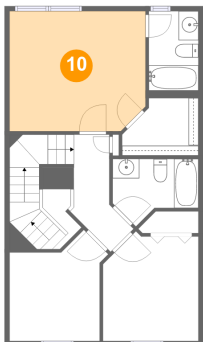
9 Floor 3 - Hall



Max Dimensions: 4'9" x 11'0"
Calculated Area: 114 sq. ft
Included: Yes

Heated: Yes
Finished: Yes
Enclosed: Yes
Contiguous: Yes
Permitted: Yes
Wet space: No
Addition: No
Conversion: No

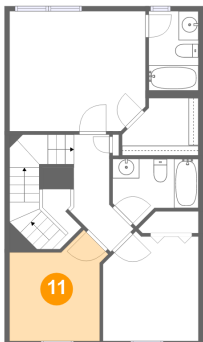
10 Floor 3 - Primary Bedroom



Max Dimensions: 13'8" x 12'0"
Calculated Area: 161 sq. ft
Included: Yes

Heated: Yes
Finished: Yes
Enclosed: Yes
Contiguous: Yes
Permitted: Yes
Wet space: No
Addition: No
Conversion: No

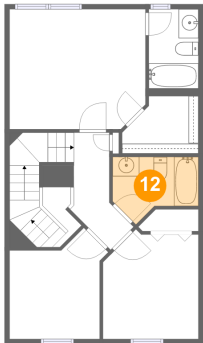
11 Floor 3 - Room



Max Dimensions: 9'0" x 11'2"
Calculated Area: 86 sq. ft
Included: Yes

Heated: Yes
Finished: Yes
Enclosed: Yes
Contiguous: Yes
Permitted: Yes
Wet space: No
Addition: No
Conversion: No

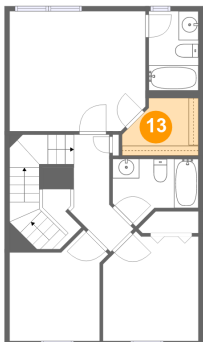
12 Floor 3 - Bath



Max Dimensions: 8'7" x 6'9"
Calculated Area: 46 sq. ft
Included: Yes

Heated: Yes
Finished: Yes
Enclosed: Yes
Contiguous: Yes
Permitted: Yes
Wet space: Yes
Addition: No
Conversion: No

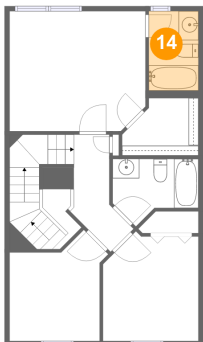
13 Floor 3 - W.I.C.



Max Dimensions: 7'8" x 5'9"
Calculated Area: 38 sq. ft
Included: Yes

Heated: Yes
Finished: Yes
Enclosed: Yes
Contiguous: Yes
Permitted: Yes
Wet space: No
Addition: No
Conversion: No

14 Floor 3 - Bath

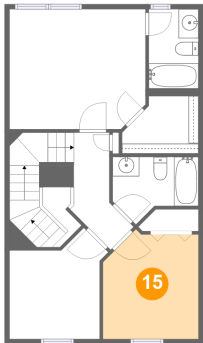


Max Dimensions: 5'0" x 8'0"
Calculated Area: 40 sq. ft
Included: Yes

Heated: Yes
Finished: Yes
Enclosed: Yes
Contiguous: Yes
Permitted: Yes
Wet space: Yes
Addition: No
Conversion: No

1724 Derrs Square East, Dearbought, Frederick, Frederick
County, Maryland, United States, 21701

15 Floor 3 - Bedroom



Max Dimensions: 9'7" x 11'0"
Calculated Area: 97 sq. ft
Included: Yes

Heated: Yes
Finished: Yes
Enclosed: Yes
Contiguous: Yes
Permitted: Yes
Wet space: No
Addition: No
Conversion: No