



Home report


7011 Mustang Court, Polo Farms, Summerfield, Guilford County,  
North Carolina, United States, 27358





Property summary


 **1** Garages


 **4** Bedrooms

 **3** Bathrooms

 **1** Half baths

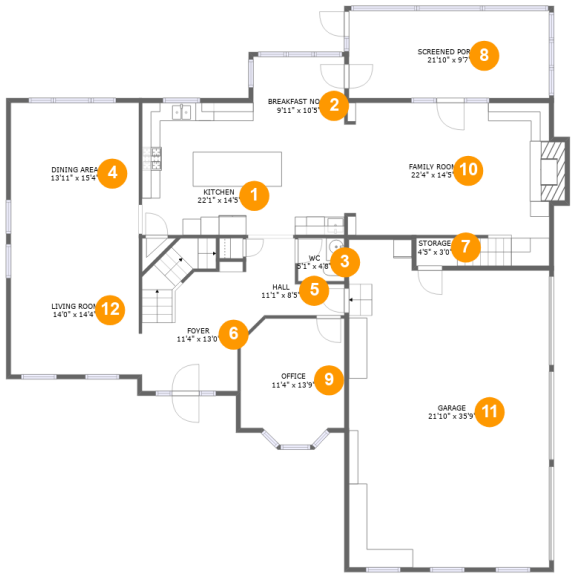
 **2** Floors

 **3,889** Gross living area sqft

 **5,111** Total sqft

Home report

7011 Mustang Court, Polo Farms, Summerfield, Guilford County,  
North Carolina, United States, 27358



Room dimensions

Floor 1 Total sqft: 2703    Living area: 1681

#		Dimensions	sqft	Counted as living area
1	Kitchen	22'1" x 14'5"	265 sq. ft	Yes
2	Breakfast Nook	9'11" x 10'5"	103 sq. ft	Yes
3	WC	5'1" x 4'8"	24 sq. ft	Yes
4	Dining Area	13'11" x 15'4"	214 sq. ft	Yes
5	Hall	11'1" x 8'5"	68 sq. ft	Yes
6	Foyer	11'4" x 13'0"	164 sq. ft	Yes
7	Storage	4'5" x 3'0"	13 sq. ft	No
8	Screened Porch	21'10" x 9'7"	209 sq. ft	No
9	Office	11'4" x 13'9"	141 sq. ft	Yes
10	Family Room	22'4" x 14'5"	365 sq. ft	Yes
11	Garage	21'10" x 35'9"	730 sq. ft	No

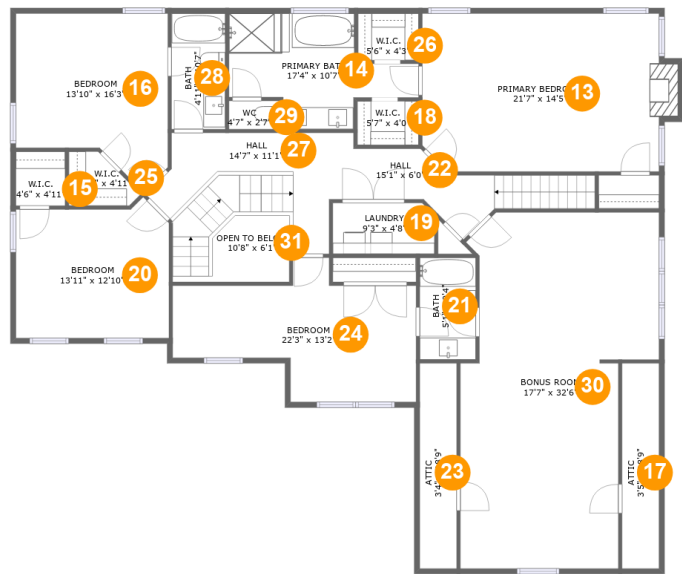
Home report

7011 Mustang Court, Polo Farms, Summerfield, Guilford County,  
North Carolina, United States, 27358

#		Dimensions	sqft	Counted as living area
12	Living Room	14'0" x 14'4"	200 sq. ft	Yes

Home report

7011 Mustang Court, Polo Farms, Summerfield, Guilford County,  
North Carolina, United States, 27358



Room dimensions

Floor 2 Total sqft: 2408    Living area: 2208

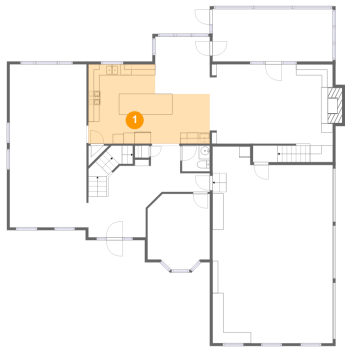
#		Dimensions	sqft	Counted as living area
13	Primary Bedroom	21'7" x 14'5"	317 sq. ft	Yes
14	Primary Bath	17'4" x 10'7"	124 sq. ft	Yes
15	W.I.C.	4'6" x 4'11"	22 sq. ft	Yes
16	Bedroom	13'10" x 16'3"	185 sq. ft	Yes
17	Attic	3'5" x 18'9"	63 sq. ft	No
18	W.I.C.	5'7" x 4'0"	22 sq. ft	Yes
19	Laundry	9'3" x 4'8"	43 sq. ft	Yes
20	Bedroom	13'11" x 12'10"	165 sq. ft	Yes
21	Bath	5'1" x 9'4"	48 sq. ft	Yes
22	Hall	15'1" x 6'0"	101 sq. ft	Yes
23	Attic	3'4" x 18'9"	63 sq. ft	No

## Home report

**7011 Mustang Court, Polo Farms, Summerfield, Guilford County,  
North Carolina, United States, 27358**

#		Dimensions	sqft	Counted as living area
24	Bedroom	22'3" x 13'2"	201 sq. ft	Yes
25	W.I.C.	6'7" x 4'11"	24 sq. ft	Yes
26	W.I.C.	5'6" x 4'3"	24 sq. ft	Yes
27	Hall	14'7" x 11'1"	149 sq. ft	Yes
28	Bath	4'11" x 10'7"	52 sq. ft	Yes
29	WC	4'7" x 2'7"	12 sq. ft	Yes
30	Bonus Room	17'7" x 32'6"	495 sq. ft	Yes
31	Open To Below	10'8" x 6'1"	42 sq. ft	No

1 Floor 1 - Kitchen



Dimensions: 22'1" x 14'5"  
Area: 265 sq. ft  
Counted as living area: Yes

Heated: Yes  
Finished: Yes  
Enclosed: Yes  
Contiguous: Yes  
Permitted: Yes  
Wet space: No  
Addition: No  
Conversion: No

2 Floor 1 - Breakfast Nook

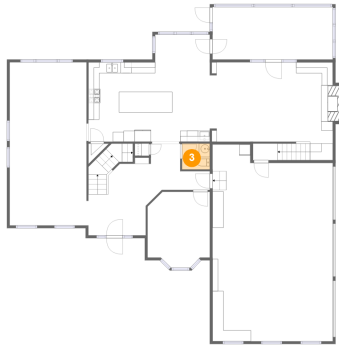


Dimensions: 9'11" x 10'5"  
Area: 103 sq. ft  
Counted as living area: Yes

Heated: Yes  
Finished: Yes  
Enclosed: Yes  
Contiguous: Yes  
Permitted: Yes  
Wet space: No  
Addition: No  
Conversion: No

7011 Mustang Court, Polo Farms, Summerfield, Guilford County,  
North Carolina, United States, 27358

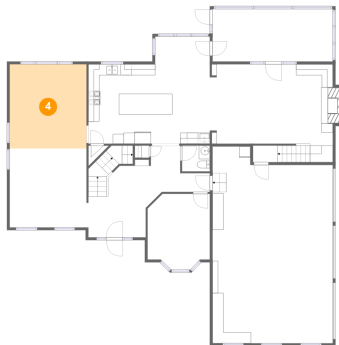
### 3 Floor 1 - WC



Dimensions: 5'1" x 4'8"  
Area: 24 sq. ft  
Counted as living area: Yes

Heated: Yes  
Finished: Yes  
Enclosed: Yes  
Contiguous: Yes  
Permitted: Yes  
Wet space: Yes  
Addition: No  
Conversion: No

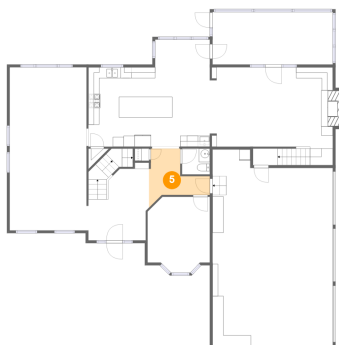
### 4 Floor 1 - Dining Area



Dimensions: 13'11" x 15'4"  
Area: 214 sq. ft  
Counted as living area: Yes

Heated: Yes  
Finished: Yes  
Enclosed: Yes  
Contiguous: Yes  
Permitted: Yes  
Wet space: No  
Addition: No  
Conversion: No

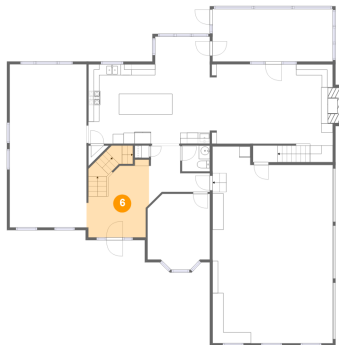
### 5 Floor 1 - Hall



Dimensions: 11'1" x 8'5"  
Area: 68 sq. ft  
Counted as living area: Yes

Heated: Yes  
Finished: Yes  
Enclosed: Yes  
Contiguous: Yes  
Permitted: Yes  
Wet space: No  
Addition: No  
Conversion: No

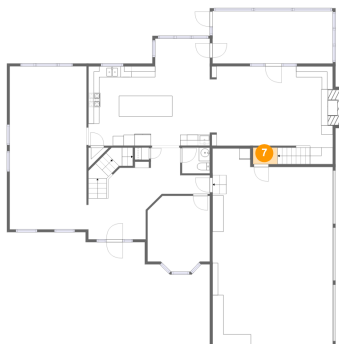
6 Floor 1 - Foyer



Dimensions: 11'4" x 13'0"  
Area: 164 sq. ft  
Counted as living area: Yes

Heated: Yes  
Finished: Yes  
Enclosed: Yes  
Contiguous: Yes  
Permitted: Yes  
Wet space: No  
Addition: No  
Conversion: No

7 Floor 1 - Storage



Dimensions: 4'5" x 3'0"  
Area: 13 sq. ft  
Counted as living area: No

Heated: No  
Finished: No  
Enclosed: No  
Contiguous: Yes  
Permitted: Yes  
Wet space: No  
Addition: No  
Conversion: No

8 Floor 1 - Screened Porch



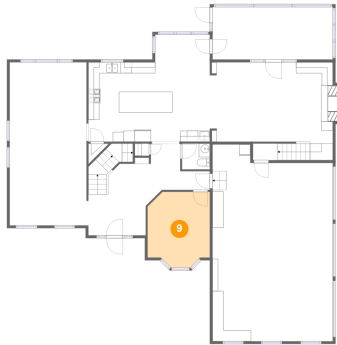
Dimensions: 21'10" x 9'7"  
Area: 209 sq. ft  
Counted as living area: No

Heated: No  
Finished: Yes  
Enclosed: No  
Contiguous: Yes  
Permitted: Yes  
Wet space: No  
Addition: No  
Conversion: No



7011 Mustang Court, Polo Farms, Summerfield, Guilford County,  
North Carolina, United States, 27358

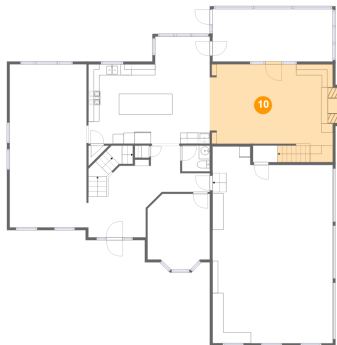
## 9 Floor 1 - Office



Dimensions: 11'4" x 13'9"  
Area: 141 sq. ft  
Counted as living area: Yes

Heated: Yes  
Finished: Yes  
Enclosed: Yes  
Contiguous: Yes  
Permitted: Yes  
Wet space: No  
Addition: No  
Conversion: No

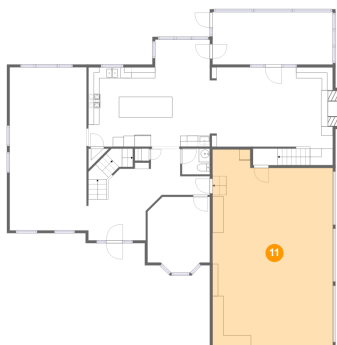
## 10 Floor 1 - Family Room



Dimensions: 22'4" x 14'5"  
Area: 365 sq. ft  
Counted as living area: Yes

Heated: Yes  
Finished: Yes  
Enclosed: Yes  
Contiguous: Yes  
Permitted: Yes  
Wet space: No  
Addition: No  
Conversion: No

## 11 Floor 1 - Garage

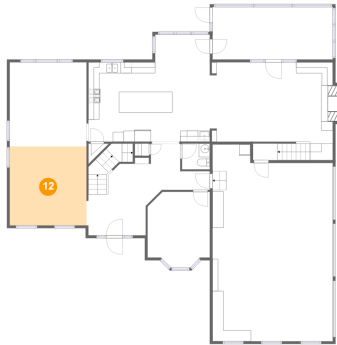


Dimensions: 21'10" x 35'9"  
Area: 730 sq. ft  
Counted as living area: No

Heated: No  
Finished: No  
Enclosed: Yes  
Contiguous: Yes  
Permitted: Yes  
Wet space: No  
Addition: No  
Conversion: No

7011 Mustang Court, Polo Farms, Summerfield, Guilford County,  
North Carolina, United States, 27358

## 12 Floor 1 - Living Room



Dimensions: 14'0" x 14'4"  
Area: 200 sq. ft  
Counted as living area: Yes

Heated: Yes  
Finished: Yes  
Enclosed: Yes  
Contiguous: Yes  
Permitted: Yes  
Wet space: No  
Addition: No  
Conversion: No

## 13 Floor 2 - Primary Bedroom



Dimensions: 21'7" x 14'5"  
Area: 317 sq. ft  
Counted as living area: Yes

Heated: Yes  
Finished: Yes  
Enclosed: Yes  
Contiguous: Yes  
Permitted: Yes  
Wet space: No  
Addition: No  
Conversion: No

## 14 Floor 2 - Primary Bath



Dimensions: 17'4" x 10'7"  
Area: 124 sq. ft  
Counted as living area: Yes

Heated: Yes  
Finished: Yes  
Enclosed: Yes  
Contiguous: Yes  
Permitted: Yes  
Wet space: Yes  
Addition: No  
Conversion: No

## Home report

7011 Mustang Court, Polo Farms, Summerfield, Guilford County,  
North Carolina, United States, 27358

### 15 Floor 2 - W.I.C.



Dimensions: 4'6" x 4'11"  
Area: 22 sq. ft  
Counted as living area: Yes

Heated: Yes  
Finished: Yes  
Enclosed: Yes  
Contiguous: Yes  
Permitted: Yes  
Wet space: No  
Addition: No  
Conversion: No

### 16 Floor 2 - Bedroom



Dimensions: 13'10" x 16'3"  
Area: 185 sq. ft  
Counted as living area: Yes

Heated: Yes  
Finished: Yes  
Enclosed: Yes  
Contiguous: Yes  
Permitted: Yes  
Wet space: No  
Addition: No  
Conversion: No

### 17 Floor 2 - Attic



Dimensions: 3'5" x 18'9"  
Area: 63 sq. ft  
Counted as living area: No

Heated: No  
Finished: No  
Enclosed: Yes  
Contiguous: Yes  
Permitted: Yes  
Wet space: No  
Addition: No  
Conversion: No

7011 Mustang Court, Polo Farms, Summerfield, Guilford County,  
North Carolina, United States, 27358

**18** Floor 2 - W.I.C.



Dimensions: 5'7" x 4'0"  
Area: 22 sq. ft  
Counted as living area: Yes

Heated: Yes  
Finished: Yes  
Enclosed: Yes  
Contiguous: Yes  
Permitted: Yes  
Wet space: No  
Addition: No  
Conversion: No

**19** Floor 2 - Laundry



Dimensions: 9'3" x 4'8"  
Area: 43 sq. ft  
Counted as living area: Yes

Heated: Yes  
Finished: Yes  
Enclosed: Yes  
Contiguous: Yes  
Permitted: Yes  
Wet space: No  
Addition: No  
Conversion: No

**20** Floor 2 - Bedroom



Dimensions: 13'11" x 12'10"  
Area: 165 sq. ft  
Counted as living area: Yes

Heated: Yes  
Finished: Yes  
Enclosed: Yes  
Contiguous: Yes  
Permitted: Yes  
Wet space: No  
Addition: No  
Conversion: No

7011 Mustang Court, Polo Farms, Summerfield, Guilford County,  
North Carolina, United States, 27358

## 21 Floor 2 - Bath



Dimensions: 5'1" x 9'4"  
Area: 48 sq. ft  
Counted as living area: Yes

Heated: Yes  
Finished: Yes  
Enclosed: Yes  
Contiguous: Yes  
Permitted: Yes  
Wet space: Yes  
Addition: No  
Conversion: No

## 22 Floor 2 - Hall



Dimensions: 15'1" x 6'0"  
Area: 101 sq. ft  
Counted as living area: Yes

Heated: Yes  
Finished: Yes  
Enclosed: Yes  
Contiguous: Yes  
Permitted: Yes  
Wet space: No  
Addition: No  
Conversion: No

## 23 Floor 2 - Attic



Dimensions: 3'4" x 18'9"  
Area: 63 sq. ft  
Counted as living area: No

Heated: No  
Finished: No  
Enclosed: Yes  
Contiguous: Yes  
Permitted: Yes  
Wet space: No  
Addition: No  
Conversion: No

## Home report

7011 Mustang Court, Polo Farms, Summerfield, Guilford County,  
North Carolina, United States, 27358

### 24 Floor 2 - Bedroom



Dimensions: 22'3" x 13'2"  
Area: 201 sq. ft  
Counted as living area: Yes

Heated: Yes  
Finished: Yes  
Enclosed: Yes  
Contiguous: Yes  
Permitted: Yes  
Wet space: No  
Addition: No  
Conversion: No

### 25 Floor 2 - W.I.C.



Dimensions: 6'7" x 4'11"  
Area: 24 sq. ft  
Counted as living area: Yes

Heated: Yes  
Finished: Yes  
Enclosed: Yes  
Contiguous: Yes  
Permitted: Yes  
Wet space: No  
Addition: No  
Conversion: No

### 26 Floor 2 - W.I.C.



Dimensions: 5'6" x 4'3"  
Area: 24 sq. ft  
Counted as living area: Yes

Heated: Yes  
Finished: Yes  
Enclosed: Yes  
Contiguous: Yes  
Permitted: Yes  
Wet space: No  
Addition: No  
Conversion: No

7011 Mustang Court, Polo Farms, Summerfield, Guilford County,  
North Carolina, United States, 27358

## 27 Floor 2 - Hall



Dimensions: 14'7" x 11'1"  
Area: 149 sq. ft  
Counted as living area: Yes

Heated: Yes  
Finished: Yes  
Enclosed: Yes  
Contiguous: Yes  
Permitted: Yes  
Wet space: No  
Addition: No  
Conversion: No

## 28 Floor 2 - Bath



Dimensions: 4'11" x 10'7"  
Area: 52 sq. ft  
Counted as living area: Yes

Heated: Yes  
Finished: Yes  
Enclosed: Yes  
Contiguous: Yes  
Permitted: Yes  
Wet space: Yes  
Addition: No  
Conversion: No

## 29 Floor 2 - WC



Dimensions: 4'7" x 2'7"  
Area: 12 sq. ft  
Counted as living area: Yes

Heated: Yes  
Finished: Yes  
Enclosed: Yes  
Contiguous: Yes  
Permitted: Yes  
Wet space: Yes  
Addition: No  
Conversion: No

30 Floor 2 - Bonus Room



Dimensions: 17'7" x 32'6"  
Area: 495 sq. ft  
Counted as living area: Yes

Heated: Yes  
Finished: Yes  
Enclosed: Yes  
Contiguous: Yes  
Permitted: Yes  
Wet space: No  
Addition: No  
Conversion: No

31 Floor 2 - Open To Below



Dimensions: 10'8" x 6'1"  
Area: 42 sq. ft  
Counted as living area: No

Heated: No  
Finished: No  
Enclosed: No  
Contiguous: Yes  
Permitted: No  
Wet space: No  
Addition: No  
Conversion: No