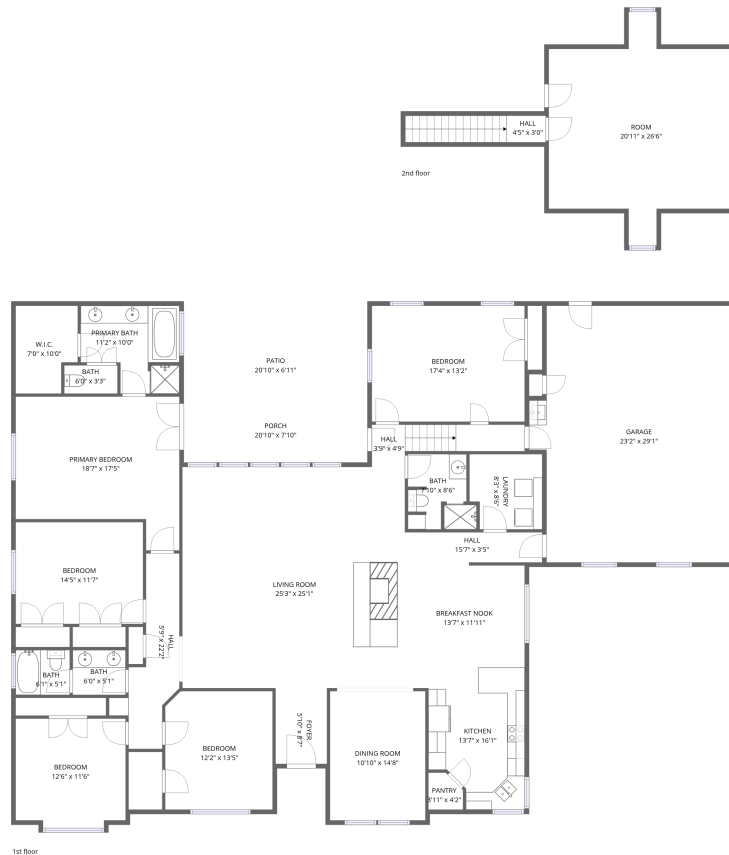


Home data report

10411 Woodbridge Drive, Forney, TX, US



Total Area: 3363 sq. ft

1st Floor: 2937 sq. ft, 2nd Floor: 426 sq. ft

Excluded: Porch 162 sq. ft, Patio 144 sq. ft, Garage 627 sq. ft, Embedded window 7 sq. ft, Low ceiling 29 sq. ft, Walls: 247 sq. ft

Property summary



2 Floors



5 Bedrooms



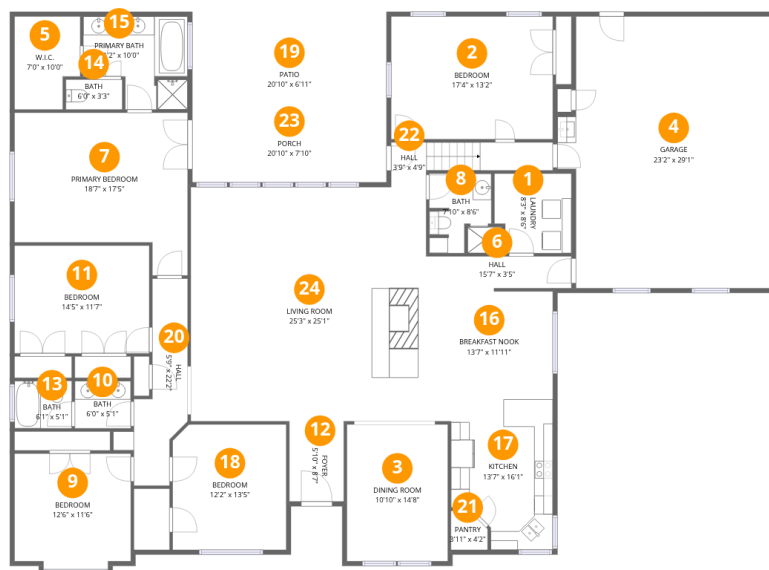
3 Bathrooms



1 Garages

Home data report

10411 Woodbridge Drive, Forney, TX, US



Room dimensions

Floor 1

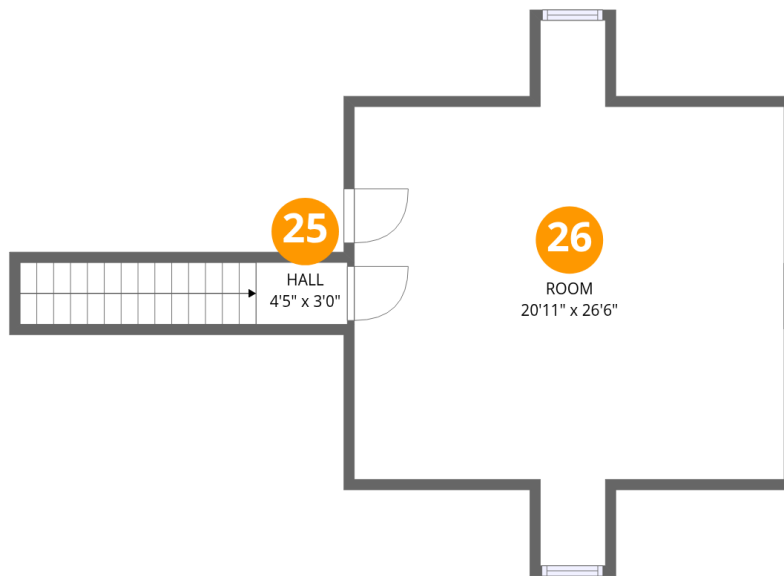
Total: 2937 sqft Excluded: 940 sqft

#		Dimensions	sqft	Counted as living area
1	Laundry	8'3" x 8'6"	70 sq. ft	Yes
2	Bedroom	17'4" x 13'2"	228 sq. ft	Yes
3	Dining Room	10'10" x 14'8"	159 sq. ft	Yes
4	Garage	23'2" x 29'1"	674 sq. ft	No
5	W.I.C.	7'0" x 10'0"	70 sq. ft	Yes
6	Hall	15'7" x 3'5"	53 sq. ft	Yes
7	Primary Bedroom	18'7" x 17'5"	324 sq. ft	Yes
8	Bath	7'10" x 8'6"	67 sq. ft	Yes
9	Bedroom	12'6" x 11'6"	144 sq. ft	Yes
10	Bath	6'0" x 5'1"	30 sq. ft	Yes
11	Bedroom	14'5" x 11'7"	166 sq. ft	Yes

Home data report

10411 Woodbridge Drive,Forney,TX,US

#		Dimensions	sqft	Counted as living area
12	Foyer	5'10" x 8'7"	50 sq. ft	Yes
13	Bath	6'1" x 5'1"	31 sq. ft	Yes
14	Bath	6'0" x 3'3"	19 sq. ft	Yes
15	Primary Bath	11'2" x 10'0"	111 sq. ft	Yes
16	Breakfast Nook	13'7" x 11'11"	162 sq. ft	Yes
17	Kitchen	13'7" x 16'1"	219 sq. ft	Yes
18	Bedroom	12'2" x 13'5"	164 sq. ft	Yes
19	Patio	20'10" x 6'11"	143 sq. ft	No
20	Hall	5'9" x 22'2"	128 sq. ft	Yes
21	Pantry	3'11" x 4'2"	16 sq. ft	Yes
22	Hall	3'9" x 4'9"	18 sq. ft	Yes
23	Porch	20'10" x 7'10"	162 sq. ft	No
24	Living Room	25'3" x 25'1"	633 sq. ft	Yes



Room dimensions

Floor 2

Total:426sqft Excluded: 29sqft

#		Dimensions	sqft	Counted as living area
25	Hall	4'5" x 3'0"	13 sq. ft	Yes
26	Room	20'11" x 26'6"	555 sq. ft	Yes

1 Floor 1 - Laundry



Dimensions: 8'3" x 8'6"
Area: 70 sq. ft
Counted as living area: Yes

Heated: Yes
Finished: Yes
Enclosed: Yes
Contiguous: Yes
Permitted: Yes
Wet space: No
Addition: No
Conversion: No

2 Floor 1 - Bedroom



Dimensions: 17'4" x 13'2"
Area: 228 sq. ft
Counted as living area: Yes

Heated: Yes
Finished: Yes
Enclosed: Yes
Contiguous: Yes
Permitted: Yes
Wet space: No
Addition: No
Conversion: No

3 Floor 1 - Dining Room



Dimensions: 10'10" x 14'8"
Area: 159 sq. ft
Counted as living area: Yes

Heated: Yes
Finished: Yes
Enclosed: Yes
Contiguous: Yes
Permitted: Yes
Wet space: No
Addition: No
Conversion: No

4 Floor 1 - Garage



Dimensions: 23'2" x 29'1"
Area: 674 sq. ft
Counted as living area: No

Heated: No
Finished: No
Enclosed: Yes
Contiguous: Yes
Permitted: Yes
Wet space: No
Addition: No
Conversion: No

5 Floor 1 - W.I.C.



Dimensions: 7'0" x 10'0"
Area: 70 sq. ft
Counted as living area: Yes

Heated: Yes
Finished: Yes
Enclosed: Yes
Contiguous: Yes
Permitted: Yes
Wet space: No
Addition: No
Conversion: No

6 Floor 1 - Hall



Dimensions: 15'7" x 3'5"
Area: 53 sq. ft
Counted as living area: Yes

Heated: Yes
Finished: Yes
Enclosed: Yes
Contiguous: Yes
Permitted: Yes
Wet space: No
Addition: No
Conversion: No

7 Floor 1 - Primary Bedroom



Dimensions: 18'7" x 17'5"
Area: 324 sq. ft
Counted as living area: Yes

Heated: Yes
Finished: Yes
Enclosed: Yes
Contiguous: Yes
Permitted: Yes
Wet space: No
Addition: No
Conversion: No

8 Floor 1 - Bath



Dimensions: 7'10" x 8'6"
Area: 67 sq. ft
Counted as living area: Yes

Heated: Yes
Finished: Yes
Enclosed: Yes
Contiguous: Yes
Permitted: Yes
Wet space: Yes
Addition: No
Conversion: No

9 Floor 1 - Bedroom



Dimensions: 12'6" x 11'6"
Area: 144 sq. ft
Counted as living area: Yes

Heated: Yes
Finished: Yes
Enclosed: Yes
Contiguous: Yes
Permitted: Yes
Wet space: No
Addition: No
Conversion: No

10 Floor 1 - Bath



Dimensions: 6'0" x 5'1"
Area: 30 sq. ft
Counted as living area: Yes

Heated: Yes
Finished: Yes
Enclosed: Yes
Contiguous: Yes
Permitted: Yes
Wet space: Yes
Addition: No
Conversion: No

11 Floor 1 - Bedroom



Dimensions: 14'5" x 11'7"
Area: 166 sq. ft
Counted as living area: Yes

Heated: Yes
Finished: Yes
Enclosed: Yes
Contiguous: Yes
Permitted: Yes
Wet space: No
Addition: No
Conversion: No

12 Floor 1 - Foyer



Dimensions: 5'10" x 8'7"
Area: 50 sq. ft
Counted as living area: Yes

Heated: Yes
Finished: Yes
Enclosed: Yes
Contiguous: Yes
Permitted: Yes
Wet space: No
Addition: No
Conversion: No

13 Floor 1 - Bath



Dimensions: 6'1" x 5'1"
Area: 31 sq. ft
Counted as living area: Yes

Heated: Yes
Finished: Yes
Enclosed: Yes
Contiguous: Yes
Permitted: Yes
Wet space: Yes
Addition: No
Conversion: No

14 Floor 1 - Bath



Dimensions: 6'0" x 3'3"
Area: 19 sq. ft
Counted as living area: Yes

Heated: Yes
Finished: Yes
Enclosed: Yes
Contiguous: Yes
Permitted: Yes
Wet space: No
Addition: No
Conversion: No

15 Floor 1 - Primary Bath



Dimensions: 11'2" x 10'0"
Area: 111 sq. ft
Counted as living area: Yes

Heated: Yes
Finished: Yes
Enclosed: Yes
Contiguous: Yes
Permitted: Yes
Wet space: Yes
Addition: No
Conversion: No

16 Floor 1 - Breakfast Nook



Dimensions: 13'7" x 11'11"
Area: 162 sq. ft
Counted as living area: Yes

Heated: Yes
Finished: Yes
Enclosed: Yes
Contiguous: Yes
Permitted: Yes
Wet space: No
Addition: No
Conversion: No

17 Floor 1 - Kitchen



Dimensions: 13'7" x 16'1"
Area: 219 sq. ft
Counted as living area: Yes

Heated: Yes
Finished: Yes
Enclosed: Yes
Contiguous: Yes
Permitted: Yes
Wet space: No
Addition: No
Conversion: No

18 Floor 1 - Bedroom



Dimensions: 12'2" x 13'5"
Area: 164 sq. ft
Counted as living area: Yes

Heated: Yes
Finished: Yes
Enclosed: Yes
Contiguous: Yes
Permitted: Yes
Wet space: No
Addition: No
Conversion: No

19 Floor 1 - Patio



Dimensions: 20'10" x 6'11"
Area: 143 sq. ft
Counted as living area: No

Heated: No
Finished: No
Enclosed: No
Contiguous: Yes
Permitted: Yes
Wet space: No
Addition: No
Conversion: No

20 Floor 1 - Hall



Dimensions: 5'9" x 22'2"
Area: 128 sq. ft
Counted as living area: Yes

Heated: Yes
Finished: Yes
Enclosed: Yes
Contiguous: Yes
Permitted: Yes
Wet space: No
Addition: No
Conversion: No

21 Floor 1 - Pantry



Dimensions: 3'11" x 4'2"
Area: 16 sq. ft
Counted as living area: Yes

Heated: Yes
Finished: Yes
Enclosed: Yes
Contiguous: Yes
Permitted: Yes
Wet space: No
Addition: No
Conversion: No

22 Floor 1 - Hall



Dimensions: 3'9" x 4'9"
Area: 18 sq. ft
Counted as living area: Yes

Heated: Yes
Finished: Yes
Enclosed: Yes
Contiguous: Yes
Permitted: Yes
Wet space: No
Addition: No
Conversion: No

23 Floor 1 - Porch



Dimensions: 20'10" x 7'10"
Area: 162 sq. ft
Counted as living area: No

Heated: No
Finished: No
Enclosed: No
Contiguous: Yes
Permitted: Yes
Wet space: No
Addition: No
Conversion: No

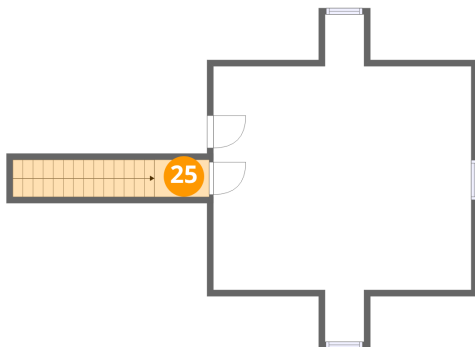
24 Floor 1 - Living Room



Dimensions: 25'3" x 25'1"
Area: 633 sq. ft
Counted as living area: Yes

Heated: Yes
Finished: Yes
Enclosed: Yes
Contiguous: Yes
Permitted: Yes
Wet space: No
Addition: No
Conversion: No

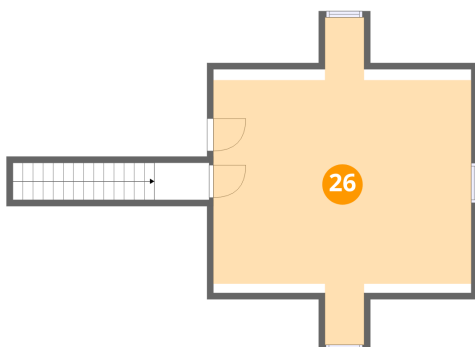
25 Floor 2 - Hall



Dimensions: 4'5" x 3'0"
Area: 13 sq. ft
Counted as living area: Yes

Heated: Yes
Finished: Yes
Enclosed: Yes
Contiguous: Yes
Permitted: Yes
Wet space: No
Addition: No
Conversion: No

26 Floor 2 - Room



Dimensions: 20'11" x 26'6"
Area: 555 sq. ft
Counted as living area: Yes

Heated: Yes
Finished: Yes
Enclosed: Yes
Contiguous: Yes
Permitted: Yes
Wet space: No
Addition: No
Conversion: No