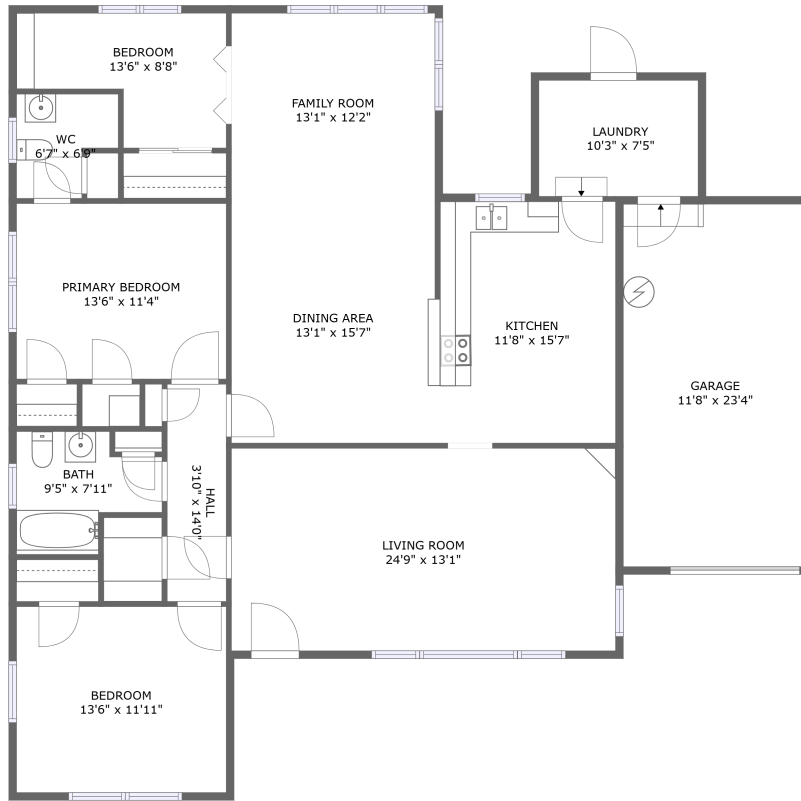


6718 E Bayou Drive ,Hitchcock,Texas,United states





FLOOR 1

Property Summary

 **1** garages

 **3** bedrooms

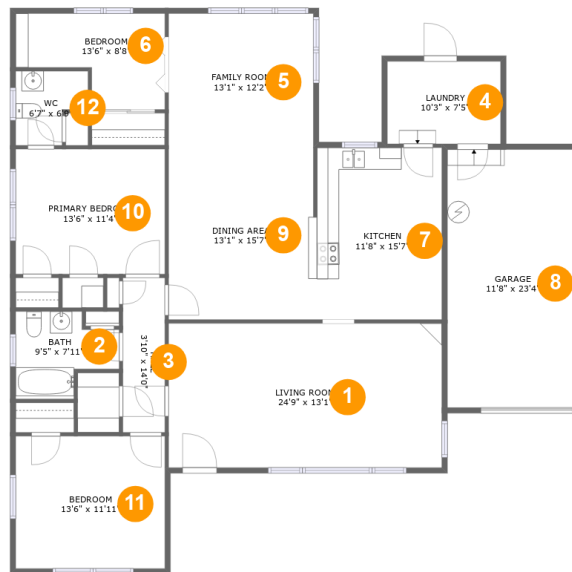
 **1** bathrooms

 **1** half baths

 **1** floors

 **1,750** Gross Living Area sqft

 **2,044** total sqft

6718 E Bayou Drive ,Hitchcock,Texas,United states**Room Dimensions****Floor 1****Total sqft: 2044****Living area: 1750**

#	Room name	Dimensions	Area (sqft)	Counted as Living Area
1	Living Room	24'9" x 13'1"	323 sq. ft	Yes
2	Bath	9'5" x 7'11"	58 sq. ft	Yes
3	Hall	3'10" x 14'0"	53 sq. ft	Yes
4	Laundry	10'3" x 7'5"	77 sq. ft	Yes
5	Family Room	13'1" x 12'2"	159 sq. ft	Yes
6	Bedroom	13'6" x 8'8"	91 sq. ft	Yes
7	Kitchen	11'8" x 15'7"	179 sq. ft	Yes
8	Garage	11'8" x 23'4"	273 sq. ft	No
9	Dining Area	13'1" x 15'7"	204 sq. ft	Yes
10	Primary Bedroom	13'6" x 11'4"	153 sq. ft	Yes
11	Bedroom	13'6" x 11'11"	162 sq. ft	Yes

Scan captured on Wed, 21 Aug 2024 21:56:19 GMT

Information is calculated by CubiCasa technology; deemed highly reliable but not guaranteed.

6718 E Bayou Drive ,Hitchcock,Texas,United states

#	Room name	Dimensions	Area (sqft)	Counted as Living Area
12	Wc	6'7" x 6'9"	36 sq. ft	Yes

6718 E Bayou Drive ,Hitchcock,Texas,United states

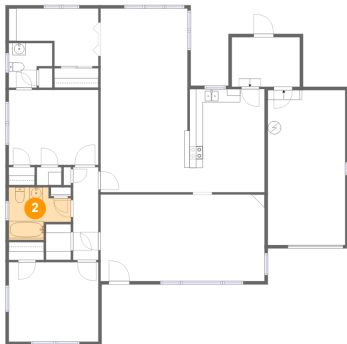
1 Floor 1 - Living Room



Dimensions: 24'9" x 13'1"
Area: 323 sq. ft
Counted as Living Area:
Yes

Heated: Yes
Finished: Yes
Enclosed: Yes
Contiguous:
Yes
Permitted: Yes
Wet Space: No
Addition: No
Conversion: No

2 Floor 1 - Bath



Dimensions: 9'5" x 7'11"
Area: 58 sq. ft
Counted as Living Area:
Yes

Heated: Yes
Finished: Yes
Enclosed: Yes
Contiguous:
Yes
Permitted: Yes
Wet Space: Yes
Addition: No
Conversion: No

6718 E Bayou Drive ,Hitchcock,Texas,United states

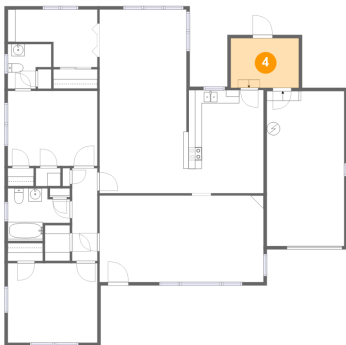
3 Floor 1 - Hall



Dimensions: 3'10" x 14'0"
Area: 53 sq. ft
Counted as Living Area:
Yes

Heated: Yes
Finished: Yes
Enclosed: Yes
Contiguous:
Yes
Permitted: Yes
Wet Space: No
Addition: No
Conversion: No

4 Floor 1 - Laundry



Dimensions: 10'3" x 7'5"
Area: 77 sq. ft
Counted as Living Area:
Yes

Heated: Yes
Finished: Yes
Enclosed: Yes
Contiguous:
Yes
Permitted: Yes
Wet Space: No
Addition: No
Conversion: No

5 Floor 1 - Family Room



Dimensions: 13'1" x 12'2"
Area: 159 sq. ft
Counted as Living Area:
Yes

Heated: Yes
Finished: Yes
Enclosed: Yes
Contiguous:
Yes
Permitted: Yes
Wet Space: No
Addition: No
Conversion: No

6718 E Bayou Drive ,Hitchcock,Texas,United states

6 Floor 1 - Bedroom



Dimensions: 13'6" x 8'8"
Area: 91 sq. ft
Counted as Living Area:
Yes

Heated: Yes
Finished: Yes
Enclosed: Yes
Contiguous:
Yes
Permitted: Yes
Wet Space: No
Addition: No
Conversion: No

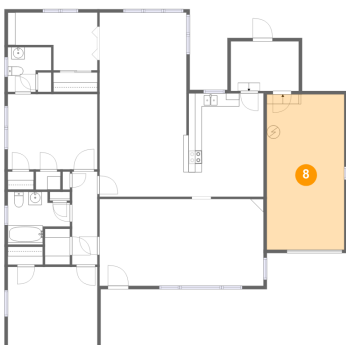
7 Floor 1 - Kitchen



Dimensions: 11'8" x 15'7"
Area: 179 sq. ft
Counted as Living Area:
Yes

Heated: Yes
Finished: Yes
Enclosed: Yes
Contiguous:
Yes
Permitted: Yes
Wet Space: No
Addition: No
Conversion: No

8 Floor 1 - Garage

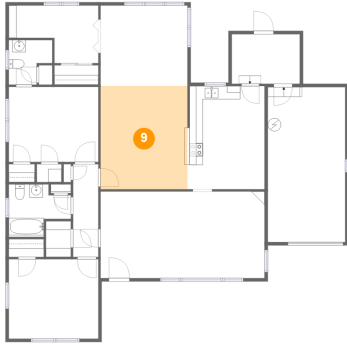


Dimensions: 11'8" x 23'4"
Area: 273 sq. ft
Counted as Living Area: No

Heated: No
Finished: No
Enclosed: Yes
Contiguous: Yes
Permitted: Yes
Wet Space: No
Addition: No
Conversion: No

6718 E Bayou Drive ,Hitchcock,Texas,United states

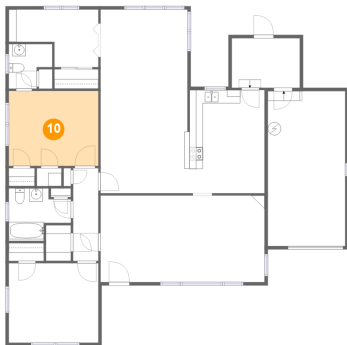
9 Floor 1 - Dining Area



Dimensions: 13'1" x 15'7"
Area: 204 sq. ft
Counted as Living Area:
Yes

Heated: Yes
Finished: Yes
Enclosed: Yes
Contiguous:
Yes
Permitted: Yes
Wet Space: No
Addition: No
Conversion: No

10 Floor 1 - Primary Bedroom



Dimensions: 13'6" x 11'4"
Area: 153 sq. ft
Counted as Living Area:
Yes

Heated: Yes
Finished: Yes
Enclosed: Yes
Contiguous:
Yes
Permitted: Yes
Wet Space: No
Addition: No
Conversion: No

11 Floor 1 - Bedroom

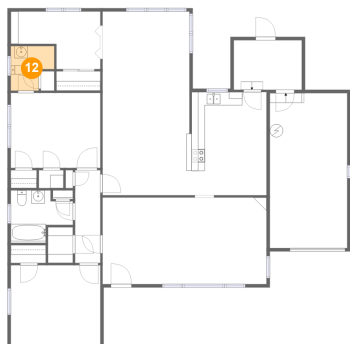


Dimensions: 13'6" x 11'11"
Area: 162 sq. ft
Counted as Living Area:
Yes

Heated: Yes
Finished: Yes
Enclosed: Yes
Contiguous:
Yes
Permitted: Yes
Wet Space: No
Addition: No
Conversion: No

6718 E Bayou Drive ,Hitchcock,Texas,United states

12 Floor 1 - Wc



Dimensions: 6'7" x 6'9"
Area: 36 sq. ft
Counted as Living Area:
Yes

Heated: Yes
Finished: Yes
Enclosed: Yes
Contiguous:
Yes
Permitted: Yes
Wet Space: Yes
Addition: No
Conversion: No