

Home report

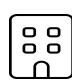
2789 Rutledge Road, South Pymatuning Township, Transfer,  
Mercer County, Pennsylvania, United States, 16154





Total Area: 2041 sq. ft


Floor 1: 0 sq. ft, Floor 2: 0 sq. ft, Floor 3: 0 sq. ft, Floor 4: 1508 sq. ft, Floor 5: 533 sq. ft  
Excluded: Garage 2741 sq. ft, Open to below 1183 sq. ft, Attic 633 sq. ft, Basement 952 sq. ft, Low ceiling 173 sq. ft, Bedroom 702 sq. ft, Porch 272 sq. ft, W.I.C. 20 sq. ft, Undefined 45 sq. ft, Primary bedroom 232 sq. ft, Room 74 sq. ft, Balcony 51 sq. ft, Walls: 528 sq. ft

Property summary

**5** Floors

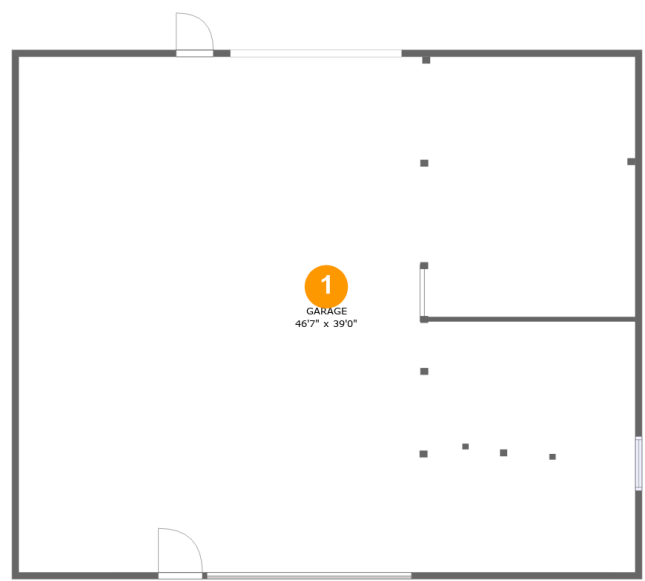
**6** Bedrooms

**2** Bathrooms

**2** Garages

Home report

2789 Rutledge Road, South Pymatuning Township, Transfer,  
Mercer County, Pennsylvania, United States, 16154



Room dimensions

Floor 1 Total:0sqft   Excluded: 1811sqft

#		Max Dimensions	sqft	Included
1	Garage	46'7" x 39'0"	1811 sq. ft	No

Home report

2789 Rutledge Road, South Pymatuning Township, Transfer,  
Mercer County, Pennsylvania, United States, 16154



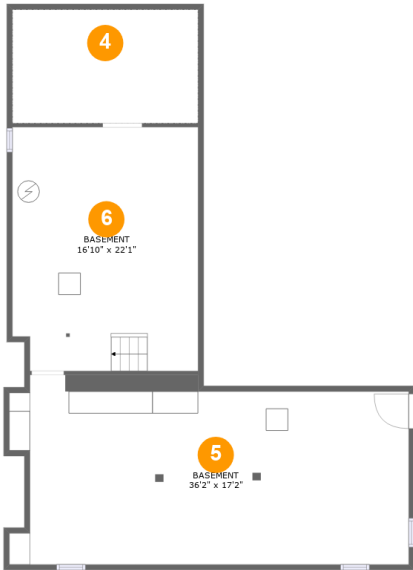
Room dimensions

Floor 2 Total:0sqft   Excluded: 1816sqft

#		Max Dimensions	sqft	Included
2	Attic	16'3" x 39'0"	633 sq. ft	No
3	Open To Below	30'4" x 39'0"	1183 sq. ft	No

Home report

2789 Rutledge Road, South Pymatuning Township, Transfer,  
Mercer County, Pennsylvania, United States, 16154



Room dimensions

Floor 3 Total:0sqft   Excluded: 1125sqft

#		Max Dimensions	sqft	Included
4	Crawl Space	16'10" x 10'4"	173 sq. ft	No
5	Basement	36'2" x 17'2"	575 sq. ft	No
6	Basement	16'10" x 22'1"	366 sq. ft	No

2789 Rutledge Road, South Pymatuning Township, Transfer,  
Mercer County, Pennsylvania, United States, 16154



Room dimensions

Floor 4 Total:1508sqft Excluded: 1422sqft

#		Max Dimensions	sqft	Included
7	Bedroom	11'8" x 16'9"	180 sq. ft	No
8	Porch	31'0" x 11'0"	272 sq. ft	No
9	Hall	7'11" x 2'10"	22 sq. ft	Yes
10	Piano Room	15'5" x 19'4"	299 sq. ft	Yes
11	Foyer	8'3" x 19'4"	157 sq. ft	Yes
12	Eat-in Kitchen	18'3" x 18'6"	296 sq. ft	Yes
13	Entry	5'4" x 20'5"	109 sq. ft	Yes
14	Walking Path	28'0" x 13'0"	151 sq. ft	No
15	Hall	10'0" x 6'3"	47 sq. ft	Yes
16	Laundry	8'11" x 10'4"	92 sq. ft	Yes
17	Bath	8'11" x 10'4"	73 sq. ft	Yes

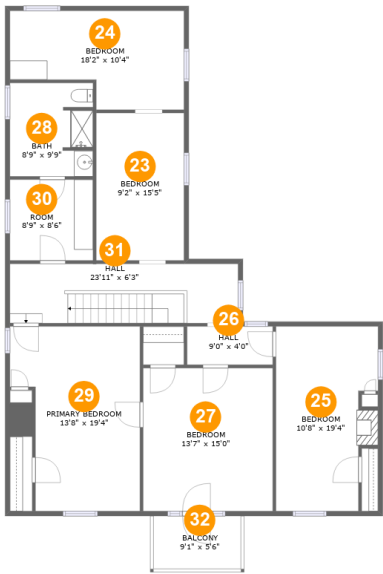
## Home report

**2789 Rutledge Road, South Pymatuning Township, Transfer,  
Mercer County, Pennsylvania, United States, 16154**

#		Max Dimensions	sqft	Included
18	W.I.C.	5'4" x 3'10"	20 sq. ft	No
19	Living Room	14'7" x 19'4"	277 sq. ft	Yes
20	Walking Path	4'2" x 26'4"	110 sq. ft	No
21	Garage	23'11" x 38'11"	930 sq. ft	No
22	Hall	5'4" x 6'7"	35 sq. ft	Yes

Home report

2789 Rutledge Road, South Pymatuning Township, Transfer,  
Mercer County, Pennsylvania, United States, 16154



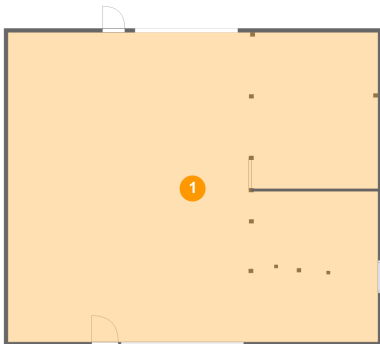
Room dimensions

Floor 5Total:533sqft    Excluded: 904sqft

#		Max Dimensions	sqft	Included
23	Bedroom	9'2" x 15'5"	142 sq. ft	No
24	Bedroom	18'2" x 10'4"	161 sq. ft	No
25	Bedroom	10'8" x 19'4"	189 sq. ft	No
26	Hall	9'0" x 4'0"	36 sq. ft	Yes
27	Bedroom	13'7" x 15'0"	204 sq. ft	Yes
28	Bath	8'9" x 9'9"	83 sq. ft	Yes
29	Primary Bedroom	13'8" x 19'4"	229 sq. ft	No
30	Room	8'9" x 8'6"	74 sq. ft	No
31	Hall	23'11" x 6'3"	149 sq. ft	Yes
32	Balcony	9'1" x 5'6"	51 sq. ft	No

2789 Rutledge Road, South Pymatuning Township, Transfer,  
Mercer County, Pennsylvania, United States, 16154

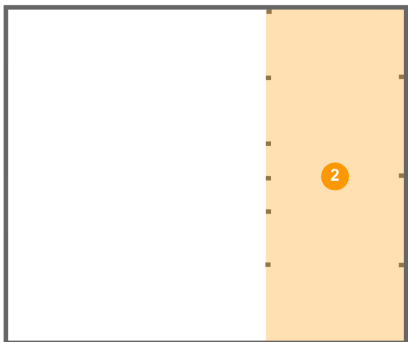
1 Floor 1 - Garage



Max Dimensions: 46'7" x 39'0"  
Calculated Area: 1811 sq. ft  
Included: No

Heated: No  
Finished: No  
Enclosed: Yes  
Contiguous: Yes  
Permitted: Yes  
Wet space: No  
Addition: No  
Conversion: No

2 Floor 2 - Attic



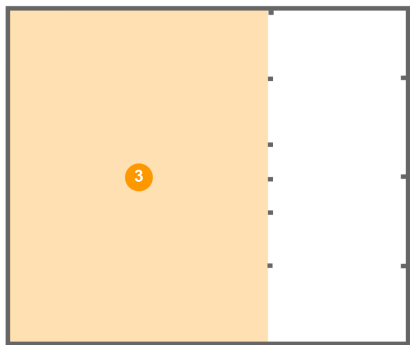
Max Dimensions: 16'3" x 39'0"  
Calculated Area: 633 sq. ft  
Included: No

Heated: No  
Finished: No  
Enclosed: Yes  
Contiguous: Yes  
Permitted: Yes  
Wet space: No  
Addition: No  
Conversion: No



2789 Rutledge Road, South Pymatuning Township, Transfer,  
Mercer County, Pennsylvania, United States, 16154

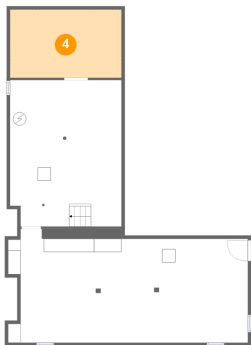
3 Floor 2 - Open To Below



Max Dimensions: 30'4" x 39'0"  
Calculated Area: 1183 sq. ft  
Included: No

Heated: No  
Finished: No  
Enclosed: No  
Contiguous: Yes  
Permitted: No  
Wet space: No  
Addition: No  
Conversion: No

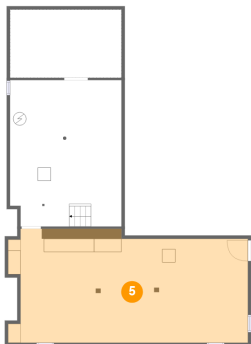
4 Floor 3 - Crawl Space



Max Dimensions: 16'10" x 10'4"  
Calculated Area: 173 sq. ft  
Included: No

Heated: No  
Finished: No  
Enclosed: No  
Contiguous: Yes  
Permitted: No  
Wet space: No  
Addition: No  
Conversion: No

5 Floor 3 - Basement



Max Dimensions: 36'2" x 17'2"  
Calculated Area: 575 sq. ft  
Included: No

Heated: Yes  
Finished: No  
Enclosed: Yes  
Contiguous: Yes  
Permitted: Yes  
Wet space: No  
Addition: No  
Conversion: No

2789 Rutledge Road, South Pymatuning Township, Transfer,  
Mercer County, Pennsylvania, United States, 16154

6 Floor 3 - Basement



Max Dimensions: 16'10" x 22'1"  
Calculated Area: 366 sq. ft  
Included: No

Heated: Yes  
Finished: No  
Enclosed: Yes  
Contiguous: Yes  
Permitted: Yes  
Wet space: No  
Addition: No  
Conversion: No

7 Floor 4 - Bedroom



Max Dimensions: 11'8" x 16'9"  
Calculated Area: 180 sq. ft  
Included: No

Heated: Yes  
Finished: No  
Enclosed: Yes  
Contiguous: Yes  
Permitted: Yes  
Wet space: No  
Addition: No  
Conversion: No

8 Floor 4 - Porch



Max Dimensions: 31'0" x 11'0"  
Calculated Area: 272 sq. ft  
Included: No

Heated: No  
Finished: Yes  
Enclosed: No  
Contiguous: Yes  
Permitted: Yes  
Wet space: No  
Addition: No  
Conversion: No

2789 Rutledge Road, South Pymatuning Township, Transfer,  
Mercer County, Pennsylvania, United States, 16154

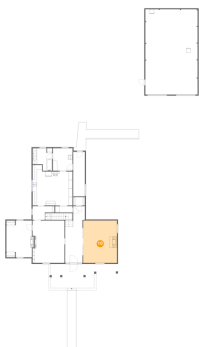
9 Floor 4 - Hall



Max Dimensions: 7'11" x 2'10"  
Calculated Area: 22 sq. ft  
Included: Yes

Heated: Yes  
Finished: Yes  
Enclosed: Yes  
Contiguous: Yes  
Permitted: Yes  
Wet space: No  
Addition: No  
Conversion: No

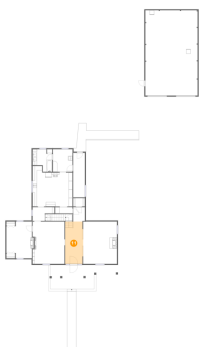
10 Floor 4 - Piano Room



Max Dimensions: 15'5" x 19'4"  
Calculated Area: 299 sq. ft  
Included: Yes

Heated: Yes  
Finished: Yes  
Enclosed: Yes  
Contiguous: Yes  
Permitted: Yes  
Wet space: No  
Addition: No  
Conversion: No

11 Floor 4 - Foyer

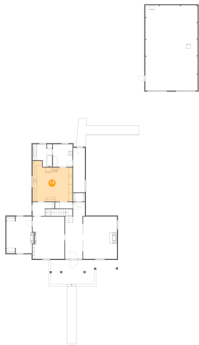


Max Dimensions: 8'3" x 19'4"  
Calculated Area: 157 sq. ft  
Included: Yes

Heated: Yes  
Finished: Yes  
Enclosed: Yes  
Contiguous: Yes  
Permitted: Yes  
Wet space: No  
Addition: No  
Conversion: No

2789 Rutledge Road, South Pymatuning Township, Transfer,  
Mercer County, Pennsylvania, United States, 16154

12 Floor 4 - Eat-in Kitchen



Max Dimensions: 18'3" x 18'6"  
Calculated Area: 296 sq. ft  
Included: Yes

Heated: Yes  
Finished: Yes  
Enclosed: Yes  
Contiguous: Yes  
Permitted: Yes  
Wet space: No  
Addition: No  
Conversion: No

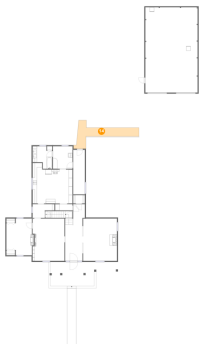
13 Floor 4 - Entry



Max Dimensions: 5'4" x 20'5"  
Calculated Area: 109 sq. ft  
Included: Yes

Heated: Yes  
Finished: Yes  
Enclosed: Yes  
Contiguous: Yes  
Permitted: Yes  
Wet space: No  
Addition: No  
Conversion: No

14 Floor 4 - Walking Path



Max Dimensions: 28'0" x 13'0"  
Calculated Area: 151 sq. ft  
Included: No

Heated: No  
Finished: No  
Enclosed: No  
Contiguous: Yes  
Permitted: No  
Wet space: No  
Addition: No  
Conversion: No

2789 Rutledge Road, South Pymatuning Township, Transfer,  
Mercer County, Pennsylvania, United States, 16154

15 Floor 4 - Hall



Max Dimensions: 10'0" x 6'3"  
Calculated Area: 47 sq. ft  
Included: Yes

Heated: Yes  
Finished: Yes  
Enclosed: Yes  
Contiguous: Yes  
Permitted: Yes  
Wet space: No  
Addition: No  
Conversion: No

16 Floor 4 - Laundry



Max Dimensions: 8'11" x 10'4"  
Calculated Area: 92 sq. ft  
Included: Yes

Heated: Yes  
Finished: Yes  
Enclosed: Yes  
Contiguous: Yes  
Permitted: Yes  
Wet space: No  
Addition: No  
Conversion: No

17 Floor 4 - Bath



Max Dimensions: 8'11" x 10'4"  
Calculated Area: 73 sq. ft  
Included: Yes

Heated: Yes  
Finished: Yes  
Enclosed: Yes  
Contiguous: Yes  
Permitted: Yes  
Wet space: Yes  
Addition: No  
Conversion: No

2789 Rutledge Road, South Pymatuning Township, Transfer,  
Mercer County, Pennsylvania, United States, 16154

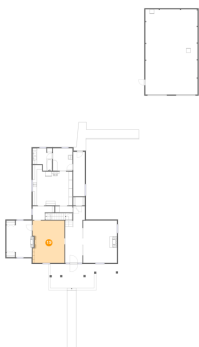
18 Floor 4 - W.I.C.



Max Dimensions: 5'4" x 3'10"  
Calculated Area: 20 sq. ft  
Included: No

Heated: Yes  
Finished: No  
Enclosed: Yes  
Contiguous: Yes  
Permitted: Yes  
Wet space: No  
Addition: No  
Conversion: No

19 Floor 4 - Living Room



Max Dimensions: 14'7" x 19'4"  
Calculated Area: 277 sq. ft  
Included: Yes

Heated: Yes  
Finished: Yes  
Enclosed: Yes  
Contiguous: Yes  
Permitted: Yes  
Wet space: No  
Addition: No  
Conversion: No

20 Floor 4 - Walking Path



Max Dimensions: 4'2" x 26'4"  
Calculated Area: 110 sq. ft  
Included: No

Heated: No  
Finished: No  
Enclosed: No  
Contiguous: Yes  
Permitted: No  
Wet space: No  
Addition: No  
Conversion: No

2789 Rutledge Road, South Pymatuning Township, Transfer,  
Mercer County, Pennsylvania, United States, 16154

21 Floor 4 - Garage



Max Dimensions: 23'11" x 38'11"  
Calculated Area: 930 sq. ft  
Included: No

Heated: No  
Finished: No  
Enclosed: Yes  
Contiguous: Yes  
Permitted: Yes  
Wet space: No  
Addition: No  
Conversion: No

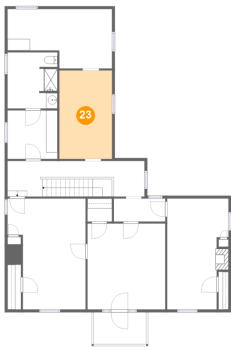
22 Floor 4 - Hall



Max Dimensions: 5'4" x 6'7"  
Calculated Area: 35 sq. ft  
Included: Yes

Heated: Yes  
Finished: Yes  
Enclosed: Yes  
Contiguous: Yes  
Permitted: Yes  
Wet space: No  
Addition: No  
Conversion: No

23 Floor 5 - Bedroom

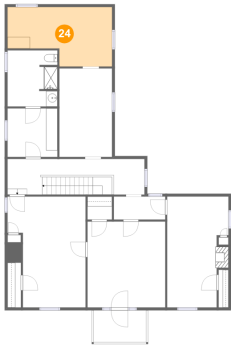


Max Dimensions: 9'2" x 15'5"  
Calculated Area: 142 sq. ft  
Included: No

Heated: Yes  
Finished: No  
Enclosed: Yes  
Contiguous: Yes  
Permitted: Yes  
Wet space: No  
Addition: No  
Conversion: No

2789 Rutledge Road, South Pymatuning Township, Transfer,  
Mercer County, Pennsylvania, United States, 16154

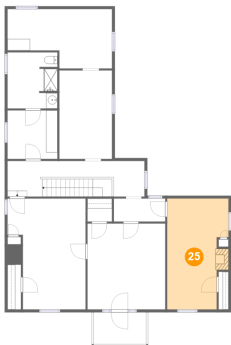
24 Floor 5 - Bedroom



Max Dimensions: 18'2" x 10'4"  
Calculated Area: 161 sq. ft  
Included: No

Heated: Yes  
Finished: No  
Enclosed: Yes  
Contiguous: Yes  
Permitted: Yes  
Wet space: No  
Addition: No  
Conversion: No

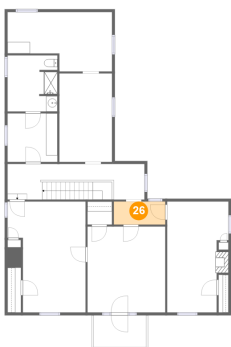
25 Floor 5 - Bedroom



Max Dimensions: 10'8" x 19'4"  
Calculated Area: 189 sq. ft  
Included: No

Heated: Yes  
Finished: No  
Enclosed: Yes  
Contiguous: Yes  
Permitted: Yes  
Wet space: No  
Addition: No  
Conversion: No

26 Floor 5 - Hall



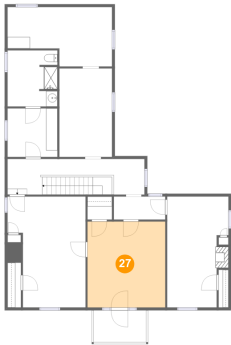
Max Dimensions: 9'0" x 4'0"  
Calculated Area: 36 sq. ft  
Included: Yes

Heated: Yes  
Finished: Yes  
Enclosed: Yes  
Contiguous: Yes  
Permitted: Yes  
Wet space: No  
Addition: No  
Conversion: No



2789 Rutledge Road, South Pymatuning Township, Transfer,  
Mercer County, Pennsylvania, United States, 16154

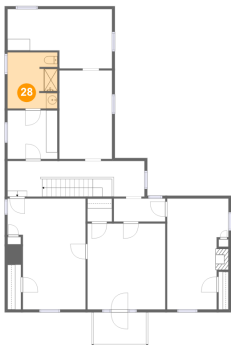
27 Floor 5 - Bedroom



Max Dimensions: 13'7" x 15'0"  
Calculated Area: 204 sq. ft  
Included: Yes

Heated: Yes  
Finished: Yes  
Enclosed: Yes  
Contiguous: Yes  
Permitted: Yes  
Wet space: No  
Addition: No  
Conversion: No

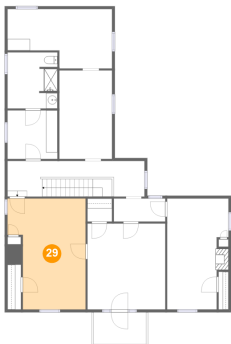
28 Floor 5 - Bath



Max Dimensions: 8'9" x 9'9"  
Calculated Area: 83 sq. ft  
Included: No

Heated: Yes  
Finished: Yes  
Enclosed: Yes  
Contiguous: No  
Permitted: Yes  
Wet space: Yes  
Addition: No  
Conversion: No

29 Floor 5 - Primary Bedroom

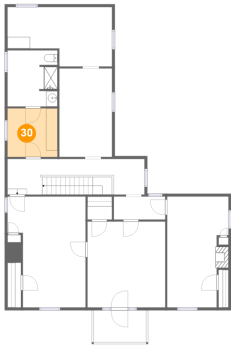


Max Dimensions: 13'8" x 19'4"  
Calculated Area: 229 sq. ft  
Included: No

Heated: Yes  
Finished: No  
Enclosed: Yes  
Contiguous: Yes  
Permitted: Yes  
Wet space: No  
Addition: No  
Conversion: No

2789 Rutledge Road, South Pymatuning Township, Transfer,  
Mercer County, Pennsylvania, United States, 16154

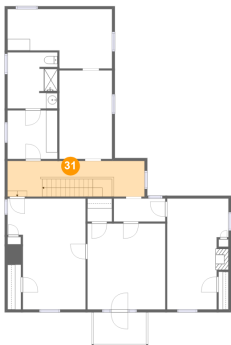
30 Floor 5 - Room



Max Dimensions: 8'9" x 8'6"  
Calculated Area: 74 sq. ft  
Included: No

Heated: Yes  
Finished: No  
Enclosed: Yes  
Contiguous: Yes  
Permitted: Yes  
Wet space: No  
Addition: No  
Conversion: No

31 Floor 5 - Hall



Max Dimensions: 23'11" x 6'3"  
Calculated Area: 149 sq. ft  
Included: Yes

Heated: Yes  
Finished: Yes  
Enclosed: Yes  
Contiguous: Yes  
Permitted: Yes  
Wet space: No  
Addition: No  
Conversion: No

32 Floor 5 - Balcony



Max Dimensions: 9'1" x 5'6"  
Calculated Area: 51 sq. ft  
Included: No

Heated: No  
Finished: Yes  
Enclosed: No  
Contiguous: Yes  
Permitted: Yes  
Wet space: No  
Addition: No  
Conversion: No