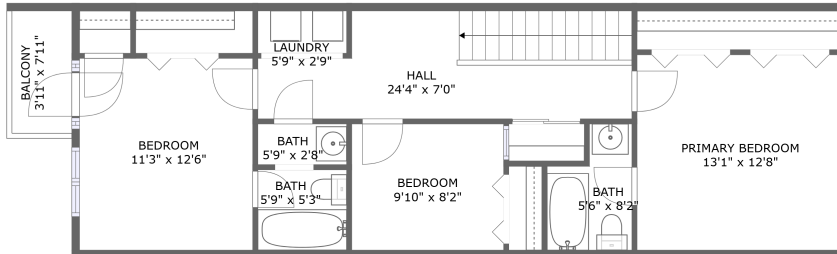
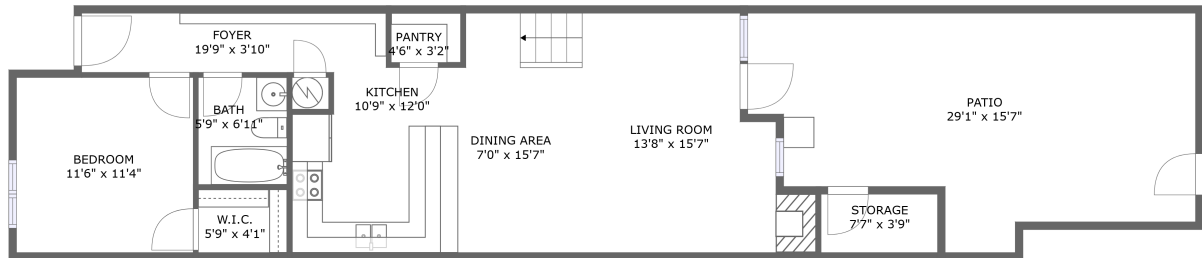


2730 Calle Anna Jean, Santa Fe, NM, US



FLOOR 2

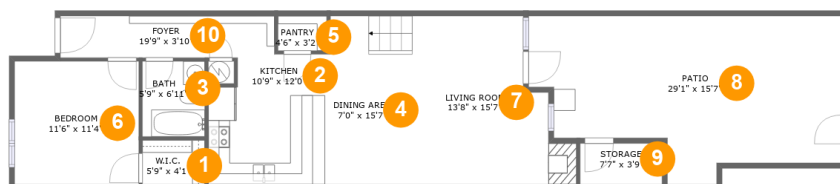


FLOOR 1

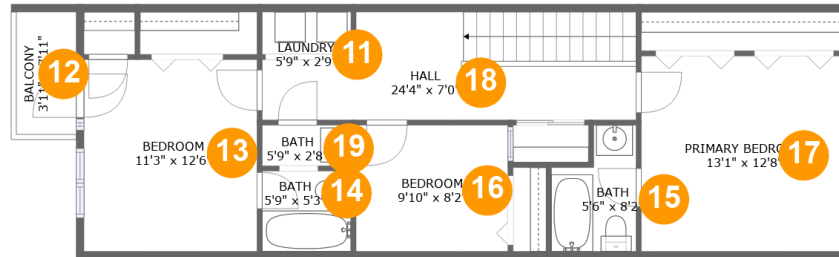
Property summary

0 Garages **4** Bedrooms **3** Bathrooms **0** Half baths

2 Floors **1,603** Gross living area sqft **2,034** Total sqft

2730 Calle Anna Jean, Santa Fe, NM, US**Room dimensions****Floor 1****Total sqft: 1194 Living area: 794**

#		Dimensions	sqft	Counted as living area
1	W.I.C.	5'9" x 4'1"	24 sq. ft	Yes
2	Kitchen	10'9" x 12'0"	121 sq. ft	Yes
3	Bath	5'9" x 6'11"	40 sq. ft	Yes
4	Dining Area	7'0" x 15'7"	108 sq. ft	Yes
5	Pantry	4'6" x 3'2"	14 sq. ft	Yes
6	Bedroom	11'6" x 11'4"	131 sq. ft	Yes
7	Living Room	13'8" x 15'7"	205 sq. ft	Yes
8	Patio	29'1" x 15'7"	363 sq. ft	No
9	Storage	7'7" x 3'9"	29 sq. ft	No
10	Foyer	19'9" x 3'10"	75 sq. ft	Yes

2730 Calle Anna Jean, Santa Fe, NM, US**Room dimensions**

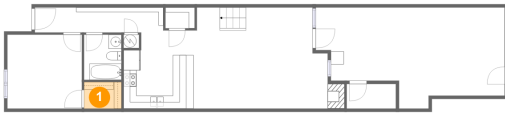
Floor 2

Total sqft: 840 Living area: 809

#		Dimensions	sqft	Counted as living area
11	Laundry	5'9" x 2'9"	16 sq. ft	Yes
12	Balcony	3'11" x 7'11"	31 sq. ft	No
13	Bedroom	11'3" x 12'6"	140 sq. ft	Yes
14	Bath	5'9" x 5'3"	30 sq. ft	Yes
15	Bath	5'6" x 8'2"	38 sq. ft	Yes
16	Bedroom	9'10" x 8'2"	81 sq. ft	Yes
17	Primary Bedroom	13'1" x 12'8"	167 sq. ft	Yes
18	Hall	24'4" x 7'0"	152 sq. ft	Yes
19	Bath	5'9" x 2'8"	15 sq. ft	Yes

2730 Calle Anna Jean, Santa Fe, NM, US

1 Floor 1 - W.I.C.



Dimensions: 5'9" x 4'1"
Area: 24 sq. ft
Counted as living area: Yes

Heated: Yes
Finished: Yes
Enclosed: Yes
Contiguous: Yes
Permitted: Yes
Wet space: No
Addition: No
Conversion: No

2 Floor 1 - Kitchen



Dimensions: 10'9" x 12'0"
Area: 121 sq. ft
Counted as living area: Yes

Heated: Yes
Finished: Yes
Enclosed: Yes
Contiguous: Yes
Permitted: Yes
Wet space: No
Addition: No
Conversion: No

2730 Calle Anna Jean, Santa Fe, NM, US

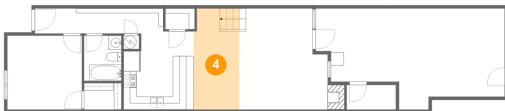
3 Floor 1 - Bath



Dimensions: 5'9" x 6'11"
Area: 40 sq. ft
Counted as living area: Yes

Heated: Yes
Finished: Yes
Enclosed: Yes
Contiguous: Yes
Permitted: Yes
Wet space: Yes
Addition: No
Conversion: No

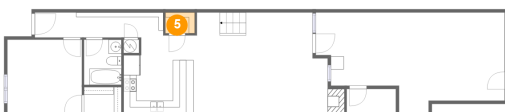
4 Floor 1 - Dining Area



Dimensions: 7'0" x 15'7"
Area: 108 sq. ft
Counted as living area: Yes

Heated: Yes
Finished: Yes
Enclosed: Yes
Contiguous: Yes
Permitted: Yes
Wet space: No
Addition: No
Conversion: No

5 Floor 1 - Pantry



Dimensions: 4'6" x 3'2"
Area: 14 sq. ft
Counted as living area: Yes

Heated: Yes
Finished: Yes
Enclosed: Yes
Contiguous: Yes
Permitted: Yes
Wet space: No
Addition: No
Conversion: No

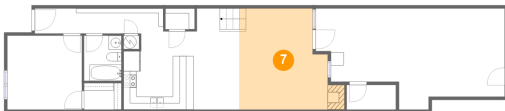
6 Floor 1 - Bedroom



Dimensions: 11'6" x 11'4"
Area: 131 sq. ft
Counted as living area: Yes

Heated: Yes
Finished: Yes
Enclosed: Yes
Contiguous: Yes
Permitted: Yes
Wet space: No
Addition: No
Conversion: No

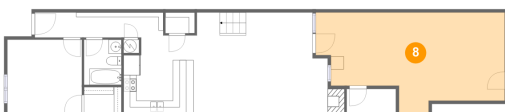
7 Floor 1 - Living Room



Dimensions: 13'8" x 15'7"
Area: 205 sq. ft
Counted as living area: Yes

Heated: Yes
Finished: Yes
Enclosed: Yes
Contiguous: Yes
Permitted: Yes
Wet space: No
Addition: No
Conversion: No

8 Floor 1 - Patio



Dimensions: 29'1" x 15'7"
Area: 363 sq. ft
Counted as living area: No

Heated: No
Finished: Yes
Enclosed: No
Contiguous: Yes
Permitted: Yes
Wet space: No
Addition: No
Conversion: No

9 Floor 1 - Storage



Dimensions: 7'7" x 3'9"
Area: 29 sq. ft
Counted as living area: No

Heated: No
Finished: No
Enclosed: No
Contiguous: Yes
Permitted: Yes
Wet space: No
Addition: No
Conversion: No

10 Floor 1 - Foyer



Dimensions: 19'9" x 3'10"
Area: 75 sq. ft
Counted as living area: Yes

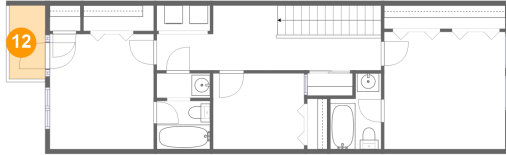
Heated: Yes
Finished: Yes
Enclosed: Yes
Contiguous: Yes
Permitted: Yes
Wet space: No
Addition: No
Conversion: No

11 Floor 2 - Laundry



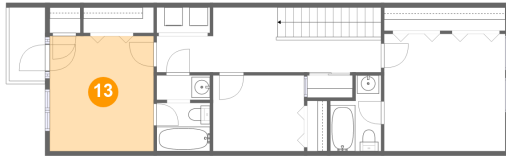
Dimensions: 5'9" x 2'9"
Area: 16 sq. ft
Counted as living area: Yes

Heated: Yes
Finished: Yes
Enclosed: Yes
Contiguous: Yes
Permitted: Yes
Wet space: No
Addition: No
Conversion: No

2730 Calle Anna Jean, Santa Fe, NM, US**12 Floor 2 - Balcony**

Dimensions: 3'11" x 7'11"
 Area: 31 sq. ft
 Counted as living area: No

Heated: No
 Finished: Yes
 Enclosed: No
 Contiguous: Yes
 Permitted: Yes
 Wet space: No
 Addition: No
 Conversion: No

13 Floor 2 - Bedroom

Dimensions: 11'3" x 12'6"
 Area: 140 sq. ft
 Counted as living area: Yes

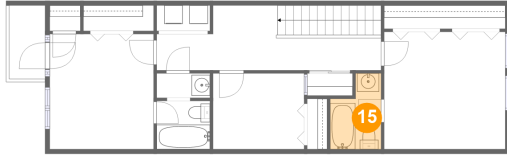
Heated: Yes
 Finished: Yes
 Enclosed: Yes
 Contiguous: Yes
 Permitted: Yes
 Wet space: No
 Addition: No
 Conversion: No

14 Floor 2 - Bath

Dimensions: 5'9" x 5'3"
 Area: 30 sq. ft
 Counted as living area: Yes

Heated: Yes
 Finished: Yes
 Enclosed: Yes
 Contiguous: Yes
 Permitted: Yes
 Wet space: Yes
 Addition: No
 Conversion: No

15 Floor 2 - Bath



Dimensions: 5'6" x 8'2"
Area: 38 sq. ft
Counted as living area: Yes

Heated: Yes
Finished: Yes
Enclosed: Yes
Contiguous: Yes
Permitted: Yes
Wet space: Yes
Addition: No
Conversion: No

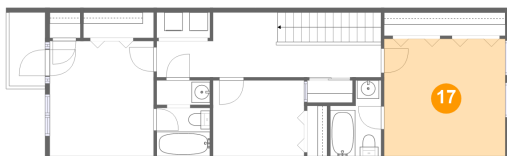
16 Floor 2 - Bedroom



Dimensions: 9'10" x 8'2"
Area: 81 sq. ft
Counted as living area: Yes

Heated: Yes
Finished: Yes
Enclosed: Yes
Contiguous: Yes
Permitted: Yes
Wet space: No
Addition: No
Conversion: No

17 Floor 2 - Primary Bedroom



Dimensions: 13'1" x 12'8"
Area: 167 sq. ft
Counted as living area: Yes

Heated: Yes
Finished: Yes
Enclosed: Yes
Contiguous: Yes
Permitted: Yes
Wet space: No
Addition: No
Conversion: No

18 Floor 2 - Hall



Dimensions: 24'4" x 7'0"
Area: 152 sq. ft
Counted as living area: Yes

Heated: Yes
Finished: Yes
Enclosed: Yes
Contiguous: Yes
Permitted: Yes
Wet space: No
Addition: No
Conversion: No

19 Floor 2 - Bath



Dimensions: 5'9" x 2'8"
Area: 15 sq. ft
Counted as living area: Yes

Heated: Yes
Finished: Yes
Enclosed: Yes
Contiguous: Yes
Permitted: Yes
Wet space: Yes
Addition: No
Conversion: No