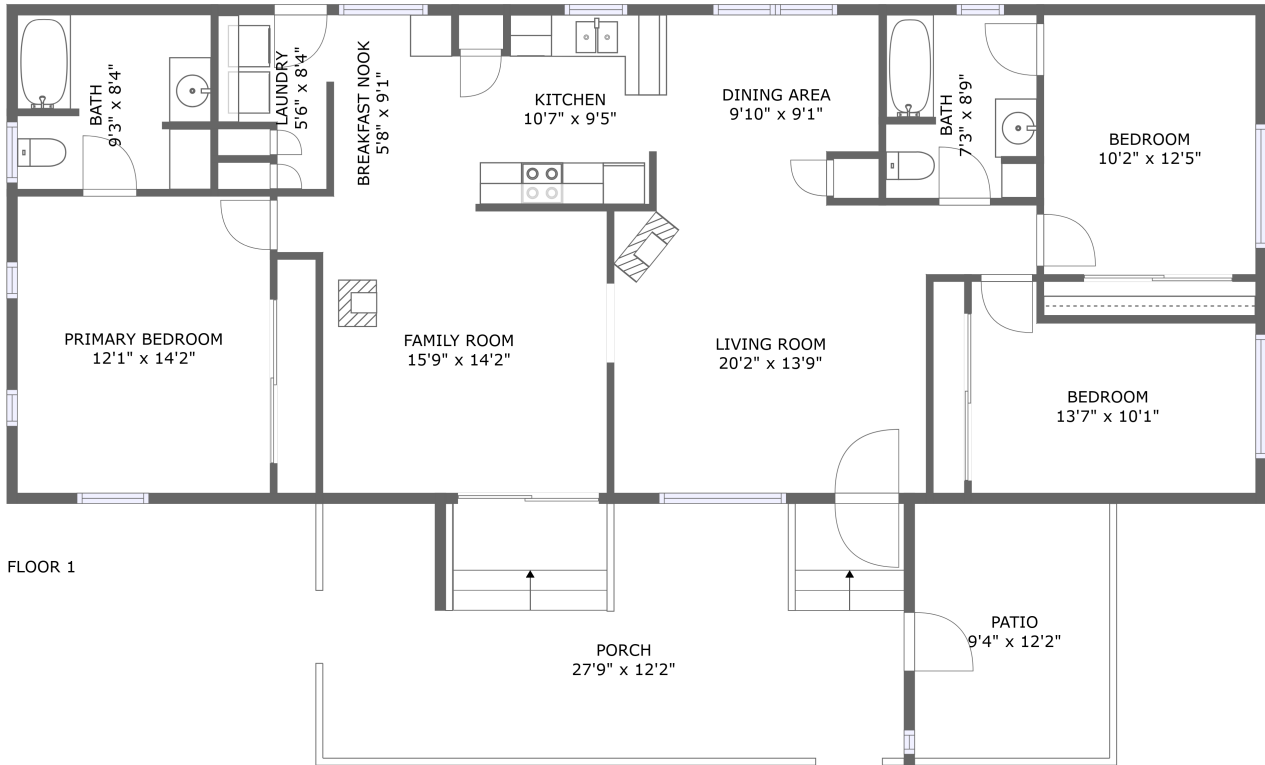


# 4700 South 5th Avenue, Pocatello, Bannock County, Idaho, United States, 83204, 54

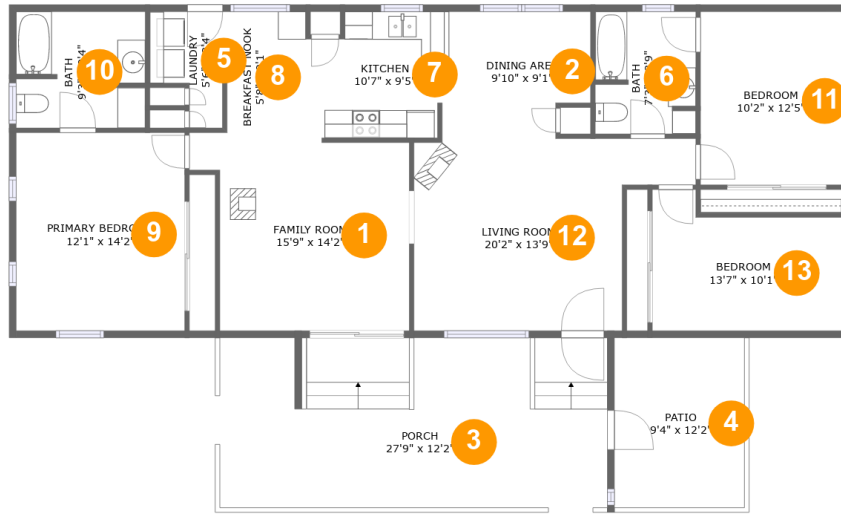


## Property Summary

**0** garages    **3** bedrooms    **2** bathrooms    **0** half baths

**1** floors    **1,436** Gross Living Area sqft    **1,887** total sqft

# 4700 South 5th Avenue, Pocatello, Bannock County, Idaho, United States, 83204, 54



## Room Dimensions

Floor 1

Total sqft: 1887

Living area: 1436

#	Room name	Dimensions	Area (sqft)	Counted as Living Area
1	Family Room	15'9" x 14'2"	192 sq. ft	Yes
2	Dining Area	9'10" x 9'1"	83 sq. ft	Yes
3	Porch	27'9" x 12'2"	338 sq. ft	No
4	Patio	9'4" x 12'2"	113 sq. ft	No
5	Laundry	5'6" x 8'4"	35 sq. ft	Yes
6	Bath	7'3" x 8'9"	62 sq. ft	Yes
7	Kitchen	10'7" x 9'5"	90 sq. ft	Yes
8	Breakfast Nook	5'8" x 9'1"	51 sq. ft	Yes
9	Primary Bedroom	12'1" x 14'2"	171 sq. ft	Yes
10	Bath	9'3" x 8'4"	75 sq. ft	Yes
11	Bedroom	10'2" x 12'5"	126 sq. ft	Yes

Scan captured on Mon, 24 Jun 2024 20:14:42 GMT

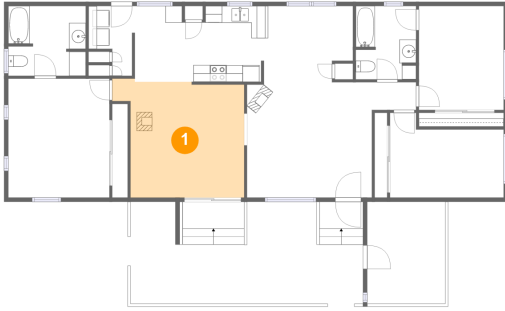
Information is calculated by CubiCasa technology; deemed highly reliable but not guaranteed.

**4700 South 5th Avenue, Pocatello, Bannock  
County, Idaho, United States, 83204, 54**

#	Room name	Dimensions	Area (sqft)	Counted as Living Area
12	Living Room	20'2" x 13'9"	222 sq. ft	Yes
13	Bedroom	13'7" x 10'1"	117 sq. ft	Yes

# 4700 South 5th Avenue, Pocatello, Bannock County, Idaho, United States, 83204, 54

## 1 Floor 1 - Family Room



Dimensions: 15'9" x 14'2"  
Area: 192 sq. ft  
Counted as Living Area:  
Yes

Heated: Yes  
Finished: Yes  
Enclosed: Yes  
Contiguous:  
Yes  
Permitted: Yes  
Wet Space: No  
Addition: No  
Conversion: No

## 2 Floor 1 - Dining Area

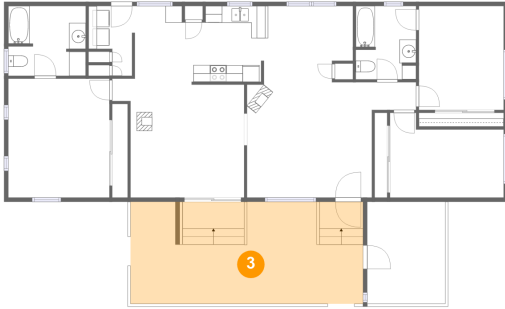


Dimensions: 9'10" x 9'1"  
Area: 83 sq. ft  
Counted as Living Area:  
Yes

Heated: Yes  
Finished: Yes  
Enclosed: Yes  
Contiguous:  
Yes  
Permitted: Yes  
Wet Space: No  
Addition: No  
Conversion: No

# 4700 South 5th Avenue, Pocatello, Bannock County, Idaho, United States, 83204, 54

## 3 Floor 1 - Porch



Dimensions: 27'9" x 12'2"  
Area: 338 sq. ft  
Counted as Living Area: No

Heated: No  
Finished: Yes  
Enclosed: No  
Contiguous: Yes  
Permitted: Yes  
Wet Space: No  
Addition: No  
Conversion: No

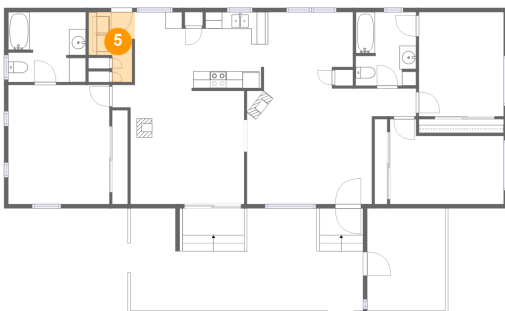
## 4 Floor 1 - Patio



Dimensions: 9'4" x 12'2"  
Area: 113 sq. ft  
Counted as Living Area: No

Heated: No  
Finished: Yes  
Enclosed: No  
Contiguous: Yes  
Permitted: Yes  
Wet Space: No  
Addition: No  
Conversion: No

## 5 Floor 1 - Laundry

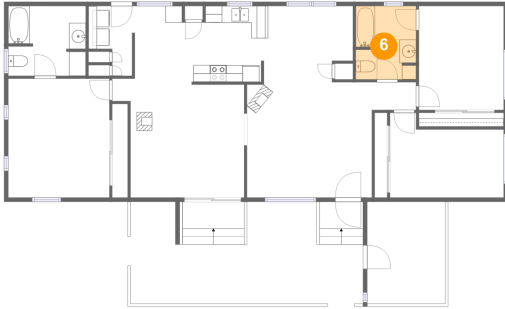


Dimensions: 5'6" x 8'4"  
Area: 35 sq. ft  
Counted as Living Area: Yes

Heated: Yes  
Finished: Yes  
Enclosed: Yes  
Contiguous: Yes  
Permitted: Yes  
Wet Space: No  
Addition: No  
Conversion: No

# 4700 South 5th Avenue, Pocatello, Bannock County, Idaho, United States, 83204, 54

## 6 Floor 1 - Bath



Dimensions: 7'3" x 8'9"  
Area: 62 sq. ft  
Counted as Living Area:  
Yes

Heated: Yes  
Finished: Yes  
Enclosed: Yes  
Contiguous:  
Yes  
Permitted: Yes  
Wet Space: Yes  
Addition: No  
Conversion: No

## 7 Floor 1 - Kitchen



Dimensions: 10'7" x 9'5"  
Area: 90 sq. ft  
Counted as Living Area:  
Yes

Heated: Yes  
Finished: Yes  
Enclosed: Yes  
Contiguous:  
Yes  
Permitted: Yes  
Wet Space: No  
Addition: No  
Conversion: No

## 8 Floor 1 - Breakfast Nook

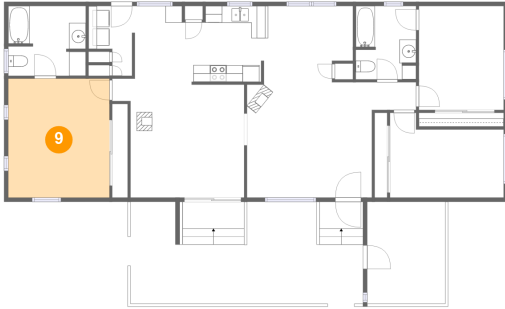


Dimensions: 5'8" x 9'1"  
Area: 51 sq. ft  
Counted as Living Area:  
Yes

Heated: Yes  
Finished: Yes  
Enclosed: Yes  
Contiguous:  
Yes  
Permitted: Yes  
Wet Space: No  
Addition: No  
Conversion: No

# 4700 South 5th Avenue, Pocatello, Bannock County, Idaho, United States, 83204, 54

## 9 Floor 1 - Primary Bedroom



Dimensions: 12'1" x 14'2"  
Area: 171 sq. ft  
Counted as Living Area:  
Yes

Heated: Yes  
Finished: Yes  
Enclosed: Yes  
Contiguous:  
Yes  
Permitted: Yes  
Wet Space: No  
Addition: No  
Conversion: No

## 10 Floor 1 - Bath



Dimensions: 9'3" x 8'4"  
Area: 75 sq. ft  
Counted as Living Area:  
Yes

Heated: Yes  
Finished: Yes  
Enclosed: Yes  
Contiguous:  
Yes  
Permitted: Yes  
Wet Space: Yes  
Addition: No  
Conversion: No

## 11 Floor 1 - Bedroom



Dimensions: 10'2" x 12'5"  
Area: 126 sq. ft  
Counted as Living Area:  
Yes

Heated: Yes  
Finished: Yes  
Enclosed: Yes  
Contiguous:  
Yes  
Permitted: Yes  
Wet Space: No  
Addition: No  
Conversion: No

# 4700 South 5th Avenue, Pocatello, Bannock County, Idaho, United States, 83204, 54

## 12 Floor 1 - Living Room



Dimensions: 20'2" x 13'9"  
Area: 222 sq. ft  
Counted as Living Area:  
Yes

Heated: Yes  
Finished: Yes  
Enclosed: Yes  
Contiguous:  
Yes  
Permitted: Yes  
Wet Space: No  
Addition: No  
Conversion: No

## 13 Floor 1 - Bedroom



Dimensions: 13'7" x 10'1"  
Area: 117 sq. ft  
Counted as Living Area:  
Yes

Heated: Yes  
Finished: Yes  
Enclosed: Yes  
Contiguous:  
Yes  
Permitted: Yes  
Wet Space: No  
Addition: No  
Conversion: No