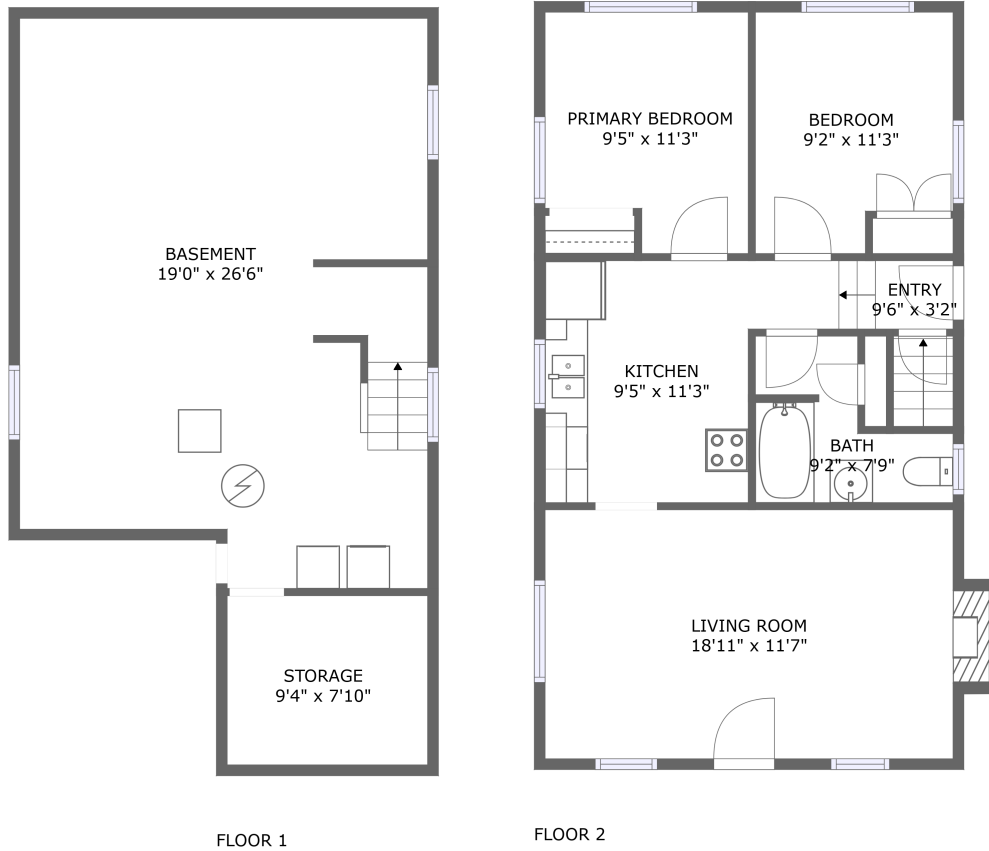



1630 Washington Avenue, Baker City, Baker County, Oregon, United States, 97814



Property summary


 **0** Garages

 **2** Bedrooms

 **1** Bathrooms

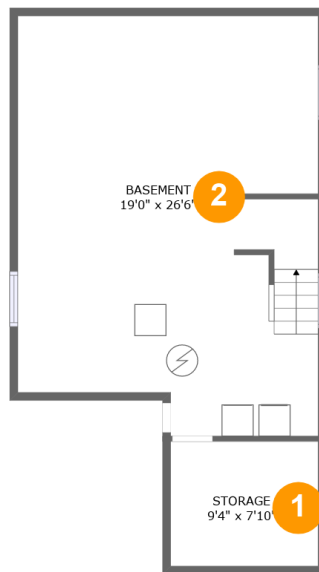
 **0** Half baths

 **2** Floors

 **699** Gross living area sqft

 **1,330** Total sqft

**1630 Washington Avenue, Baker City, Baker County,
Oregon, United States, 97814**



Room dimensions

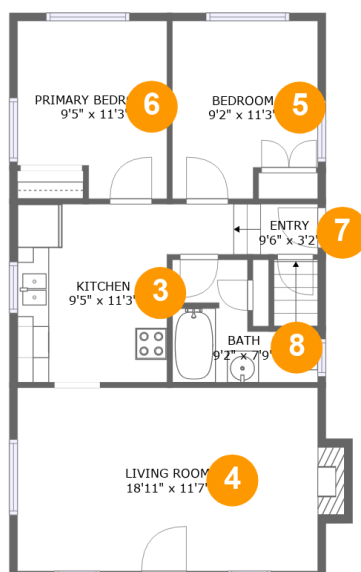
Floor 1

Total sqft: 608

Living area: 0

#		Dimensions	sqft	Counted as living area
1	Storage	9'4" x 7'10"	73 sq. ft	No
2	Basement	19'0" x 26'6"	474 sq. ft	No

1630 Washington Avenue, Baker City, Baker County, Oregon, United States, 97814



Room dimensions

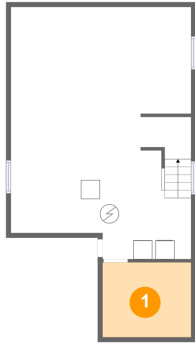
Floor 2

Total sqft: 722 Living area: 699

#		Dimensions	sqft	Counted as living area
3	Kitchen	9'5" x 11'3"	106 sq. ft	Yes
4	Living Room	18'11" x 11'7"	227 sq. ft	Yes
5	Bedroom	9'2" x 11'3"	95 sq. ft	Yes
6	Primary Bedroom	9'5" x 11'3"	97 sq. ft	Yes
7	Entry	9'6" x 3'2"	30 sq. ft	Yes
8	Bath	9'2" x 7'9"	50 sq. ft	Yes

1630 Washington Avenue, Baker City, Baker County, Oregon, United States, 97814

1 Floor 1 - Storage



Dimensions: 9'4" x 7'10"
Area: 73 sq. ft
Counted as living area: No

Heated: No
Finished: No
Enclosed: No
Contiguous: Yes
Permitted: Yes
Wet space: No
Addition: No
Conversion: No

2 Floor 1 - Basement



Dimensions: 19'0" x 26'6"
Area: 474 sq. ft
Counted as living area: No

Heated: Yes
Finished: No
Enclosed: Yes
Contiguous: Yes
Permitted: Yes
Wet space: No
Addition: No
Conversion: No

1630 Washington Avenue, Baker City, Baker County, Oregon, United States, 97814

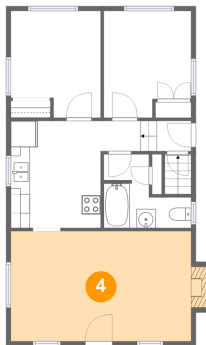
3 Floor 2 - Kitchen



Dimensions: 9'5" x 11'3"
Area: 106 sq. ft
Counted as living area: Yes

Heated: Yes
Finished: Yes
Enclosed: Yes
Contiguous: Yes
Permitted: Yes
Wet space: No
Addition: No
Conversion: No

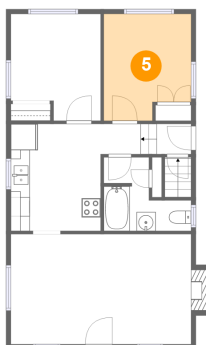
4 Floor 2 - Living Room



Dimensions: 18'11" x 11'7"
Area: 227 sq. ft
Counted as living area: Yes

Heated: Yes
Finished: Yes
Enclosed: Yes
Contiguous: Yes
Permitted: Yes
Wet space: No
Addition: No
Conversion: No

5 Floor 2 - Bedroom

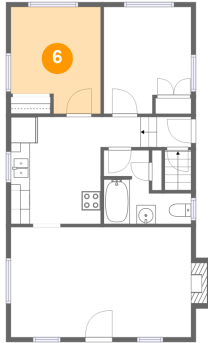


Dimensions: 9'2" x 11'3"
Area: 95 sq. ft
Counted as living area: Yes

Heated: Yes
Finished: Yes
Enclosed: Yes
Contiguous: Yes
Permitted: Yes
Wet space: No
Addition: No
Conversion: No

1630 Washington Avenue, Baker City, Baker County, Oregon, United States, 97814

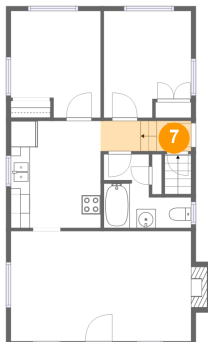
6 Floor 2 - Primary Bedroom



Dimensions: 9'5" x 11'3"
Area: 97 sq. ft
Counted as living area: Yes

Heated: Yes
Finished: Yes
Enclosed: Yes
Contiguous: Yes
Permitted: Yes
Wet space: No
Addition: No
Conversion: No

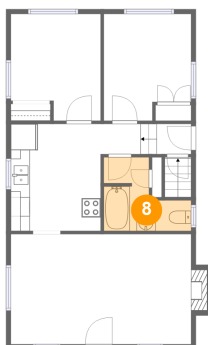
7 Floor 2 - Entry



Dimensions: 9'6" x 3'2"
Area: 30 sq. ft
Counted as living area: Yes

Heated: Yes
Finished: Yes
Enclosed: Yes
Contiguous: Yes
Permitted: Yes
Wet space: No
Addition: No
Conversion: No

8 Floor 2 - Bath



Dimensions: 9'2" x 7'9"
Area: 50 sq. ft
Counted as living area: Yes

Heated: Yes
Finished: Yes
Enclosed: Yes
Contiguous: Yes
Permitted: Yes
Wet space: Yes
Addition: No
Conversion: No