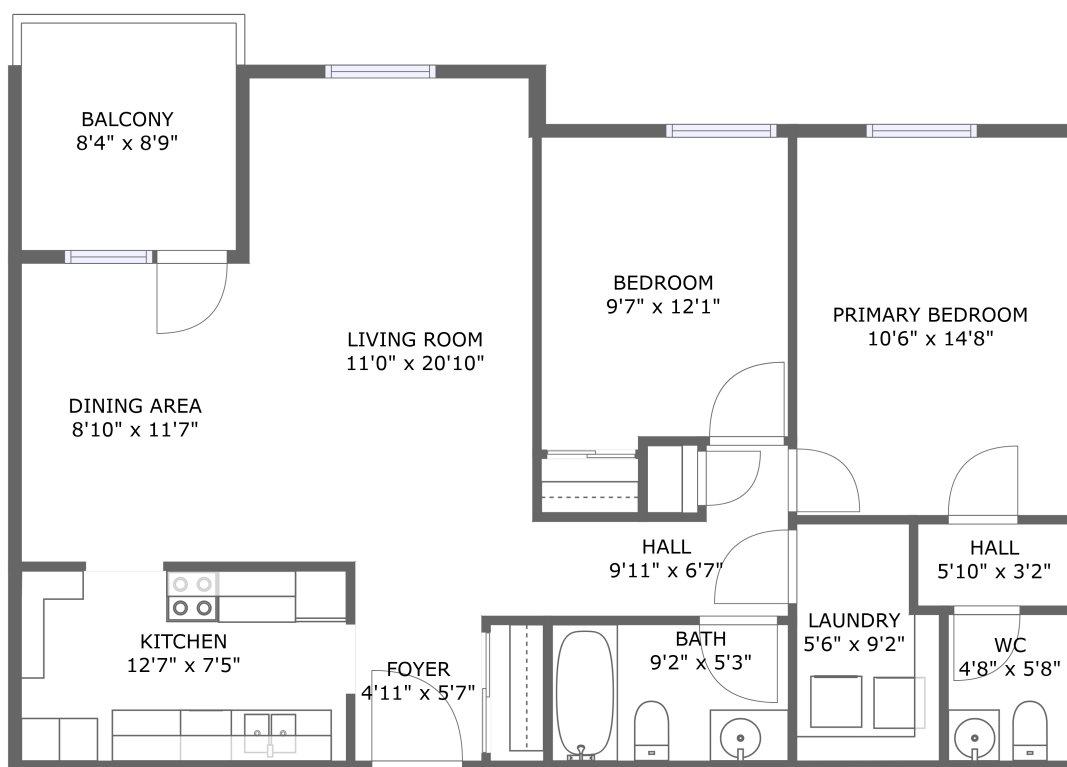


2835 Islington Ave, Unit 508, North York, ON, CA, Unit 508



FLOOR 1

Property summary


 **0** Garages

 **2** Bedrooms

 **1** Bathrooms

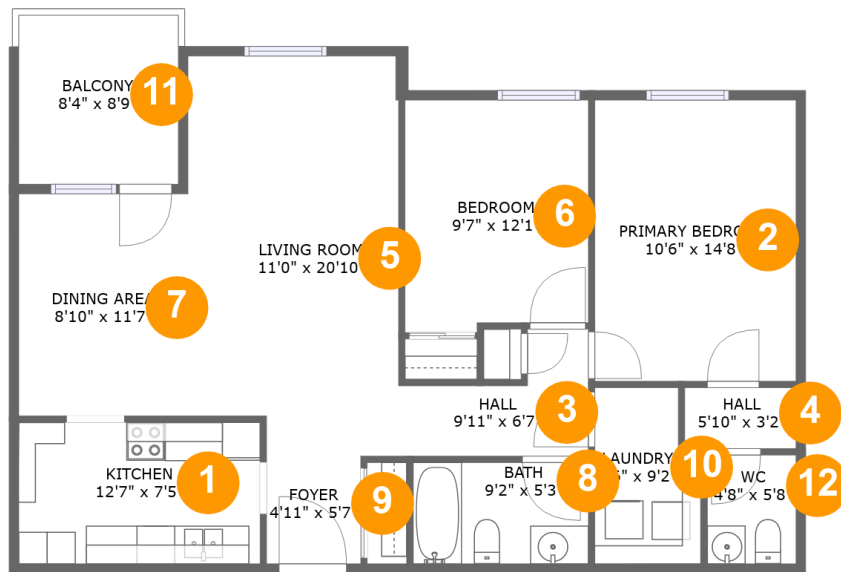
 **1** Half baths

 **1** Floors

 **964** Gross living area sqft

 **1,037** Total sqft

2835 Islington Ave, Unit 508, North York, ON, CA, Unit 508



Room dimensions

Floor 1

Total sqft: 1037

Living area: 964

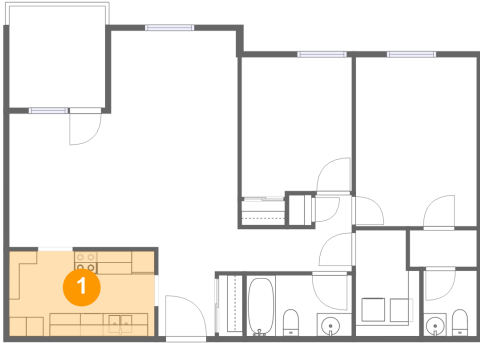
#		Dimensions	sqft	Counted as living area
1	Kitchen	12'7" x 7'5"	93 sq. ft	Yes
2	Bedroom	10'6" x 14'8"	154 sq. ft	Yes
3	Hall	9'11" x 6'7"	46 sq. ft	Yes
4	Hall	5'10" x 3'2"	18 sq. ft	Yes
5	Living Room	11'0" x 20'10"	220 sq. ft	Yes
6	Bedroom	9'7" x 12'1"	113 sq. ft	Yes
7	Dining Room	8'10" x 11'7"	102 sq. ft	Yes
8	Bath	9'2" x 5'3"	48 sq. ft	Yes
9	Entry	4'11" x 5'7"	28 sq. ft	Yes
10	Utility	5'6" x 9'2"	47 sq. ft	Yes
11	Outdoor	8'4" x 8'9"	73 sq. ft	No

2835 Islington Ave, Unit 508, North York, ON, CA, Unit 508

#		Dimensions	sqft	Counted as living area
12	Bath	4'8" x 5'8"	26 sq. ft	Yes

2835 Islington Ave, Unit 508, North York, ON, CA, Unit 508

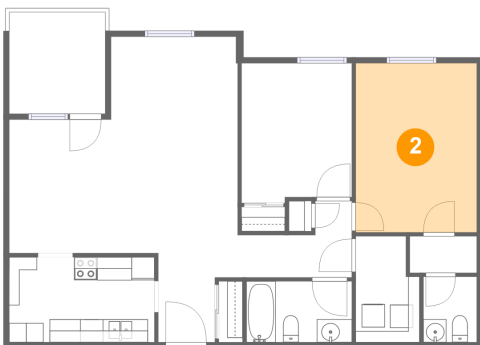
1 Floor 1 - Kitchen



Dimensions: 12'7" x 7'5"
Area: 93 sq. ft
Counted as living area: Yes

Heated: Yes
Finished: Yes
Enclosed: Yes
Contiguous: Yes
Permitted: Yes
Wet space: No
Addition: No
Conversion: No

2 Floor 1 - Bedroom

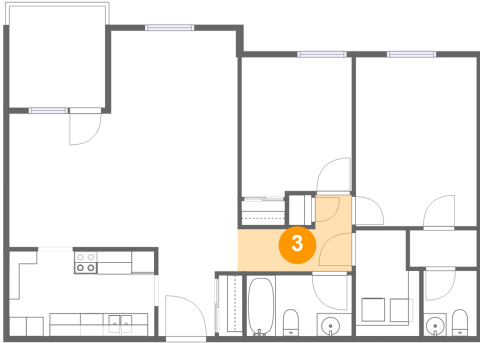


Dimensions: 10'6" x 14'8"
Area: 154 sq. ft
Counted as living area: Yes

Heated: Yes
Finished: Yes
Enclosed: Yes
Contiguous: Yes
Permitted: Yes
Wet space: No
Addition: No
Conversion: No

2835 Islington Ave, Unit 508, North York, ON, CA, Unit 508

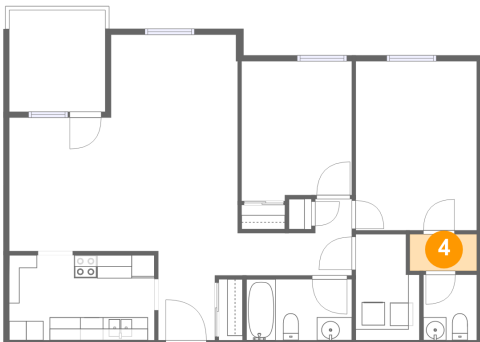
3 Floor 1 - Hall



Dimensions: 9'11" x 6'7"
Area: 46 sq. ft
Counted as living area: Yes

Heated: Yes
Finished: Yes
Enclosed: Yes
Contiguous: Yes
Permitted: Yes
Wet space: No
Addition: No
Conversion: No

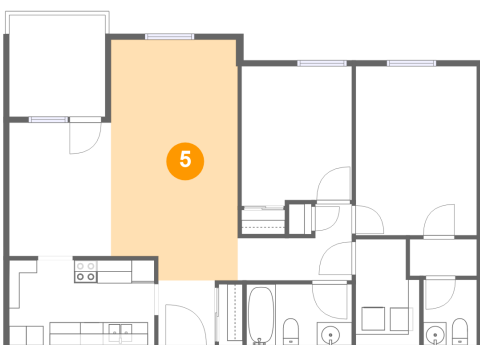
4 Floor 1 - Hall



Dimensions: 5'10" x 3'2"
Area: 18 sq. ft
Counted as living area: Yes

Heated: Yes
Finished: Yes
Enclosed: Yes
Contiguous: Yes
Permitted: Yes
Wet space: No
Addition: No
Conversion: No

5 Floor 1 - Living Room

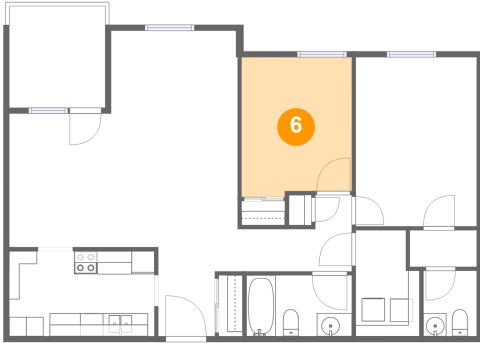


Dimensions: 11'0" x 20'10"
Area: 220 sq. ft
Counted as living area: Yes

Heated: Yes
Finished: Yes
Enclosed: Yes
Contiguous: Yes
Permitted: Yes
Wet space: No
Addition: No
Conversion: No

2835 Islington Ave, Unit 508, North York, ON, CA, Unit 508

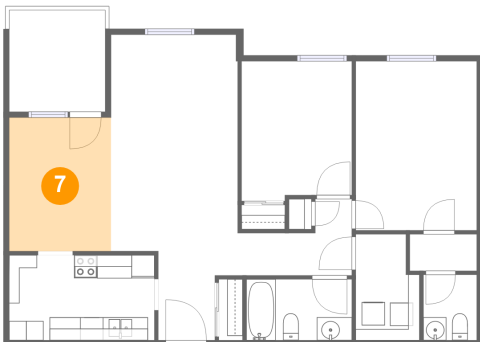
6 Floor 1 - Bedroom



Dimensions: 9'7" x 12'1"
Area: 113 sq. ft
Counted as living area: Yes

Heated: Yes
Finished: Yes
Enclosed: Yes
Contiguous: Yes
Permitted: Yes
Wet space: No
Addition: No
Conversion: No

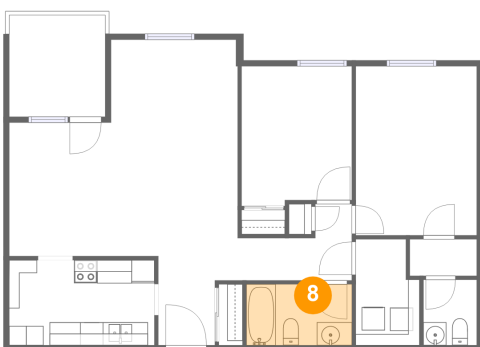
7 Floor 1 - Dining Room



Dimensions: 8'10" x 11'7"
Area: 102 sq. ft
Counted as living area: Yes

Heated: Yes
Finished: Yes
Enclosed: Yes
Contiguous: Yes
Permitted: Yes
Wet space: No
Addition: No
Conversion: No

8 Floor 1 - Bath

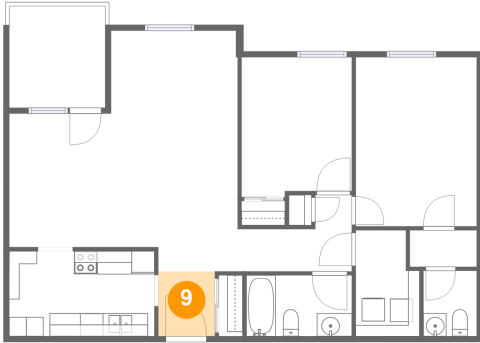


Dimensions: 9'2" x 5'3"
Area: 48 sq. ft
Counted as living area: Yes

Heated: Yes
Finished: Yes
Enclosed: Yes
Contiguous: Yes
Permitted: Yes
Wet space: Yes
Addition: No
Conversion: No

2835 Islington Ave, Unit 508, North York, ON, CA, Unit 508

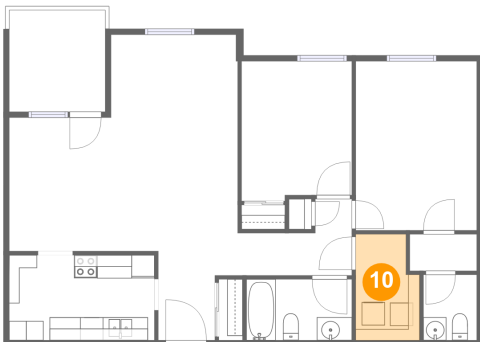
9 Floor 1 - Entry



Dimensions: 4'11" x 5'7"
Area: 28 sq. ft
Counted as living area: Yes

Heated: Yes
Finished: Yes
Enclosed: Yes
Contiguous: Yes
Permitted: Yes
Wet space: No
Addition: No
Conversion: No

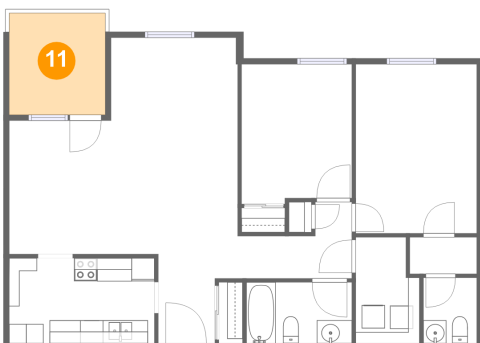
10 Floor 1 - Utility



Dimensions: 5'6" x 9'2"
Area: 47 sq. ft
Counted as living area: Yes

Heated: Yes
Finished: Yes
Enclosed: Yes
Contiguous: Yes
Permitted: Yes
Wet space: No
Addition: No
Conversion: No

11 Floor 1 - Outdoor

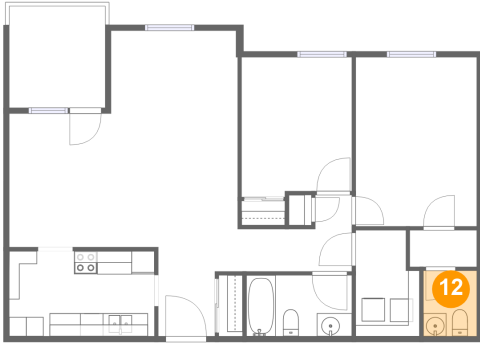


Dimensions: 8'4" x 8'9"
Area: 73 sq. ft
Counted as living area: No

Heated: No
Finished: Yes
Enclosed: No
Contiguous: Yes
Permitted: Yes
Wet space: No
Addition: No
Conversion: No

2835 Islington Ave, Unit 508, North York, ON, CA, Unit 508

12 Floor 1 - Bath



Dimensions: 4'8" x 5'8"
Area: 26 sq. ft
Counted as living area: Yes

Heated: Yes
Finished: Yes
Enclosed: Yes
Contiguous: Yes
Permitted: Yes
Wet space: Yes
Addition: No
Conversion: No