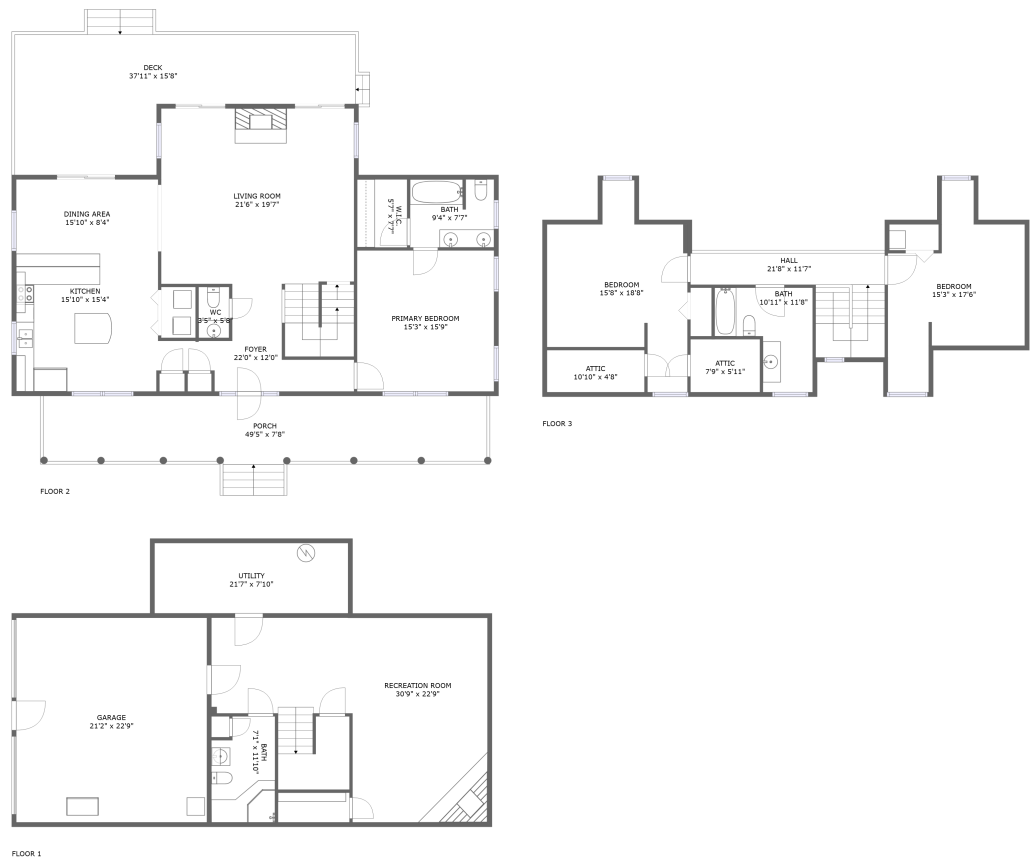


Home report

4630 Deer Trail Drive, Salem, Roanoke County, Virginia, United States, 24153



Total Area: 2801 sq. ft

Below Ground: 613 sq. ft, Floor 2: 1427 sq. ft, Floor 3: 761 sq. ft

Excluded: Undefined 95 sq. ft, Garage 484 sq. ft, Utility 169 sq. ft, Deck 444 sq. ft, Porch 385 sq. ft, Low ceiling 106 sq. ft, Walls: 265 sq. ft

Property summary

3 Floors

3 Bedrooms

3 Bathrooms

Home report

4630 Deer Trail Drive, Salem, Roanoke County, Virginia, United States, 24153



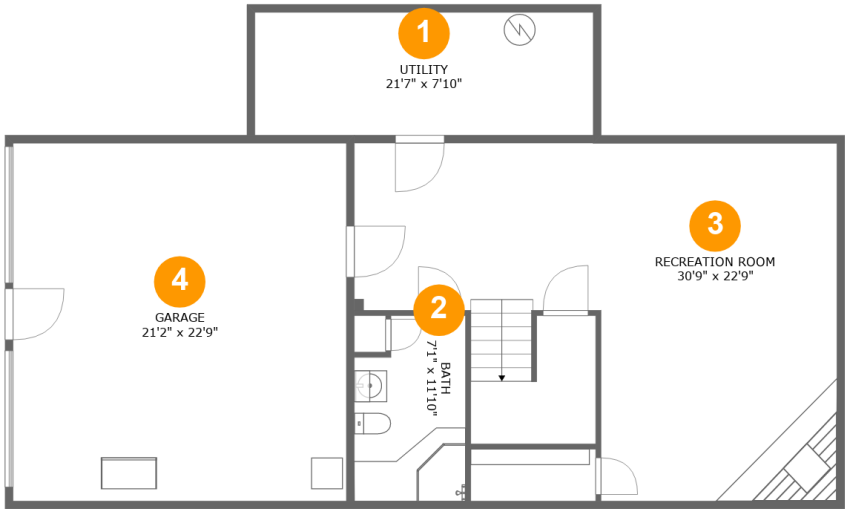
1
Half baths



1
Garages

Home report

4630 Deer Trail Drive, Salem, Roanoke County, Virginia, United States, 24153



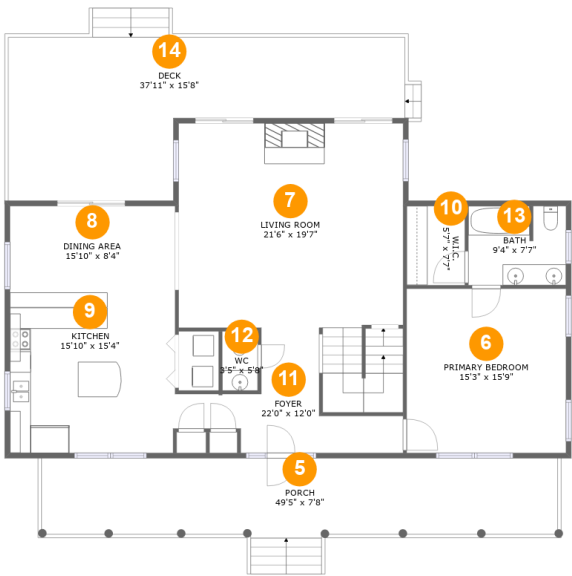
Room dimensions

Floor 1 Below ground Total:613sqft Excluded: 748sqft

#		Max Dimensions	sqft	Included
1	Utility	21'7" x 7'10"	169 sq. ft	No
2	Bath	7'1" x 11'10"	77 sq. ft	Yes
3	Recreation Room	30'9" x 22'9"	511 sq. ft	Yes
4	Garage	21'2" x 22'9"	484 sq. ft	No

Home report

4630 Deer Trail Drive, Salem, Roanoke County, Virginia, United States, 24153



Room dimensions

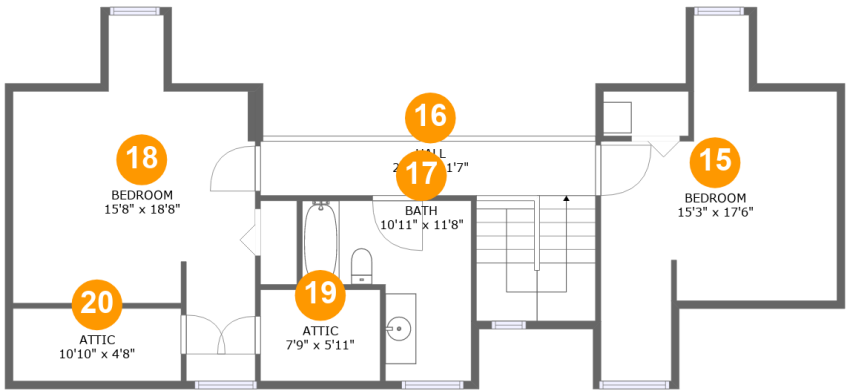
Floor 2

Total:1427sqft Excluded: 829sqft

#		Max Dimensions	sqft	Included
5	Porch	49'5" x 7'8"	385 sq. ft	No
6	Primary Bedroom	15'3" x 15'9"	240 sq. ft	Yes
7	Living Room	21'6" x 19'7"	419 sq. ft	Yes
8	Dining Area	15'10" x 8'4"	131 sq. ft	Yes
9	Kitchen	15'10" x 15'4"	241 sq. ft	Yes
10	W.I.C.	5'7" x 7'7"	42 sq. ft	Yes
11	Foyer	22'0" x 12'0"	129 sq. ft	Yes
12	WC	3'5" x 5'8"	19 sq. ft	Yes
13	Bath	9'4" x 7'7"	70 sq. ft	Yes
14	Deck	37'11" x 15'8"	444 sq. ft	No

Home report

4630 Deer Trail Drive, Salem, Roanoke County, Virginia, United States, 24153

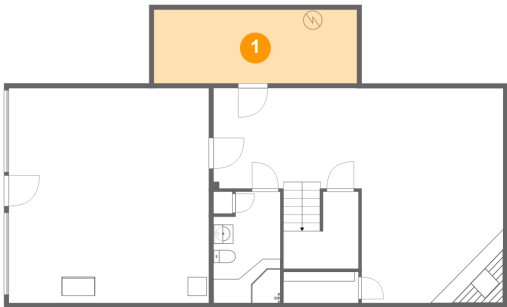


Room dimensions

Floor 3 Total:761sqft Excluded: 106sqft

#		Max Dimensions	sqft	Included
15	Bedroom	15'3" x 17'6"	218 sq. ft	Yes
16	Hall	21'8" x 11'7"	135 sq. ft	Yes
17	Bath	10'11" x 11'8"	94 sq. ft	Yes
18	Bedroom	15'8" x 18'8"	253 sq. ft	Yes
19	Attic	7'9" x 5'11"	46 sq. ft	No
20	Attic	10'10" x 4'8"	51 sq. ft	No

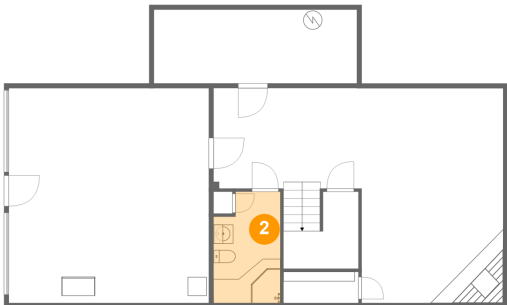
1 Floor 1 - Utility



Max Dimensions: 21'7" x 7'10"
Calculated Area: 169 sq. ft
Included: No

Heated: Yes
Finished: No
Enclosed: Yes
Contiguous: Yes
Permitted: Yes
Wet space: No
Addition: No
Conversion: No

2 Floor 1 - Bath

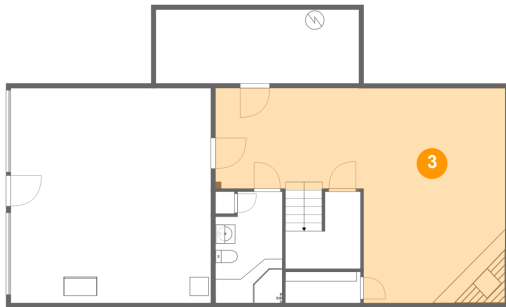


Max Dimensions: 7'1" x 11'10"
Calculated Area: 77 sq. ft
Included: Yes

Heated: Yes
Finished: Yes
Enclosed: Yes
Contiguous: Yes
Permitted: Yes
Wet space: Yes
Addition: No
Conversion: No

4630 Deer Trail Drive, Salem, Roanoke County, Virginia, United States, 24153

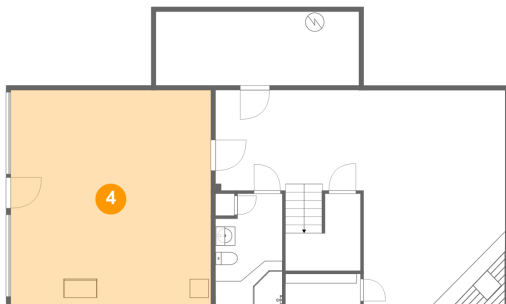
3 Floor 1 - Recreation Room



Max Dimensions: 30'9" x 22'9"
Calculated Area: 511 sq. ft
Included: Yes

Heated: Yes
Finished: Yes
Enclosed: Yes
Contiguous: Yes
Permitted: Yes
Wet space: No
Addition: No
Conversion: No

4 Floor 1 - Garage



Max Dimensions: 21'2" x 22'9"
Calculated Area: 484 sq. ft
Included: No

Heated: No
Finished: No
Enclosed: Yes
Contiguous: Yes
Permitted: Yes
Wet space: No
Addition: No
Conversion: No

5 Floor 2 - Porch



Max Dimensions: 49'5" x 7'8"
Calculated Area: 385 sq. ft
Included: No

Heated: No
Finished: Yes
Enclosed: No
Contiguous: Yes
Permitted: Yes
Wet space: No
Addition: No
Conversion: No

6 Floor 2 - Primary Bedroom



Max Dimensions: 15'3" x 15'9"
Calculated Area: 240 sq. ft
Included: Yes

Heated: Yes
Finished: Yes
Enclosed: Yes
Contiguous: Yes
Permitted: Yes
Wet space: No
Addition: No
Conversion: No

7 Floor 2 - Living Room



Max Dimensions: 21'6" x 19'7"
Calculated Area: 419 sq. ft
Included: Yes

Heated: Yes
Finished: Yes
Enclosed: Yes
Contiguous: Yes
Permitted: Yes
Wet space: No
Addition: No
Conversion: No

8 Floor 2 - Dining Area



Max Dimensions: 15'10" x 8'4"
Calculated Area: 131 sq. ft
Included: Yes

Heated: Yes
Finished: Yes
Enclosed: Yes
Contiguous: Yes
Permitted: Yes
Wet space: No
Addition: No
Conversion: No

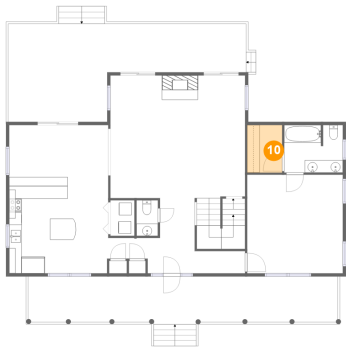
9 Floor 2 - Kitchen



Max Dimensions: 15'10" x 15'4"
Calculated Area: 241 sq. ft
Included: Yes

Heated: Yes
Finished: Yes
Enclosed: Yes
Contiguous: Yes
Permitted: Yes
Wet space: No
Addition: No
Conversion: No

10 Floor 2 - W.I.C.



Max Dimensions: 5'7" x 7'7"
Calculated Area: 42 sq. ft
Included: Yes

Heated: Yes
Finished: Yes
Enclosed: Yes
Contiguous: Yes
Permitted: Yes
Wet space: No
Addition: No
Conversion: No

11 Floor 2 - Foyer



Max Dimensions: 22'0" x 12'0"
Calculated Area: 129 sq. ft
Included: Yes

Heated: Yes
Finished: Yes
Enclosed: Yes
Contiguous: Yes
Permitted: Yes
Wet space: No
Addition: No
Conversion: No

4630 Deer Trail Drive, Salem, Roanoke County, Virginia, United States, 24153

12 Floor 2 - WC



Max Dimensions: 3'5" x 5'8"
Calculated Area: 19 sq. ft
Included: Yes

Heated: Yes
Finished: Yes
Enclosed: Yes
Contiguous: Yes
Permitted: Yes
Wet space: Yes
Addition: No
Conversion: No

13 Floor 2 - Bath



Max Dimensions: 9'4" x 7'7"
Calculated Area: 70 sq. ft
Included: Yes

Heated: Yes
Finished: Yes
Enclosed: Yes
Contiguous: Yes
Permitted: Yes
Wet space: Yes
Addition: No
Conversion: No

14 Floor 2 - Deck



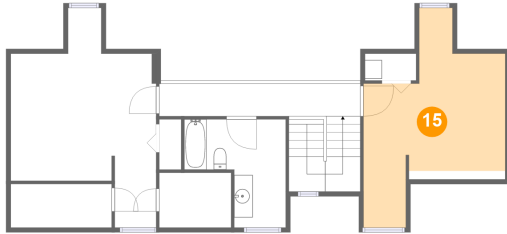
Max Dimensions: 37'11" x 15'8"
Calculated Area: 444 sq. ft
Included: No

Heated: No
Finished: Yes
Enclosed: No
Contiguous: Yes
Permitted: Yes
Wet space: No
Addition: No
Conversion: No

Home report

4630 Deer Trail Drive, Salem, Roanoke County, Virginia, United States, 24153

15 Floor 3 - Bedroom



Max Dimensions: 15'3" x 17'6"
Calculated Area: 218 sq. ft
Included: Yes

Heated: Yes
Finished: Yes
Enclosed: Yes
Contiguous: Yes
Permitted: Yes
Wet space: No
Addition: No
Conversion: No

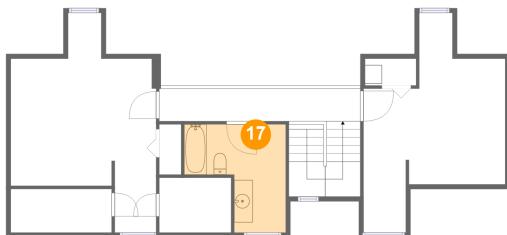
16 Floor 3 - Hall



Max Dimensions: 21'8" x 11'7"
Calculated Area: 135 sq. ft
Included: Yes

Heated: Yes
Finished: Yes
Enclosed: Yes
Contiguous: Yes
Permitted: Yes
Wet space: No
Addition: No
Conversion: No

17 Floor 3 - Bath

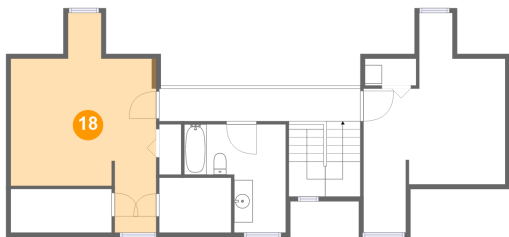


Max Dimensions: 10'11" x 11'8"
Calculated Area: 94 sq. ft
Included: Yes

Heated: Yes
Finished: Yes
Enclosed: Yes
Contiguous: Yes
Permitted: Yes
Wet space: Yes
Addition: No
Conversion: No

4630 Deer Trail Drive, Salem, Roanoke County, Virginia, United States, 24153

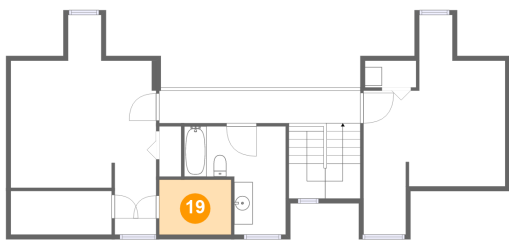
18 Floor 3 - Bedroom



Max Dimensions: 15'8" x 18'8"
Calculated Area: 253 sq. ft
Included: Yes

Heated: Yes
Finished: Yes
Enclosed: Yes
Contiguous: Yes
Permitted: Yes
Wet space: No
Addition: No
Conversion: No

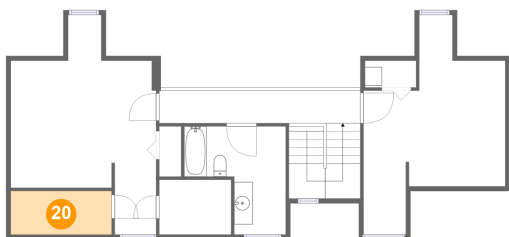
19 Floor 3 - Attic



Max Dimensions: 7'9" x 5'11"
Calculated Area: 46 sq. ft
Included: No

Heated: No
Finished: No
Enclosed: Yes
Contiguous: Yes
Permitted: Yes
Wet space: No
Addition: No
Conversion: No

20 Floor 3 - Attic



Max Dimensions: 10'10" x 4'8"
Calculated Area: 51 sq. ft
Included: No

Heated: No
Finished: No
Enclosed: Yes
Contiguous: Yes
Permitted: Yes
Wet space: No
Addition: No
Conversion: No