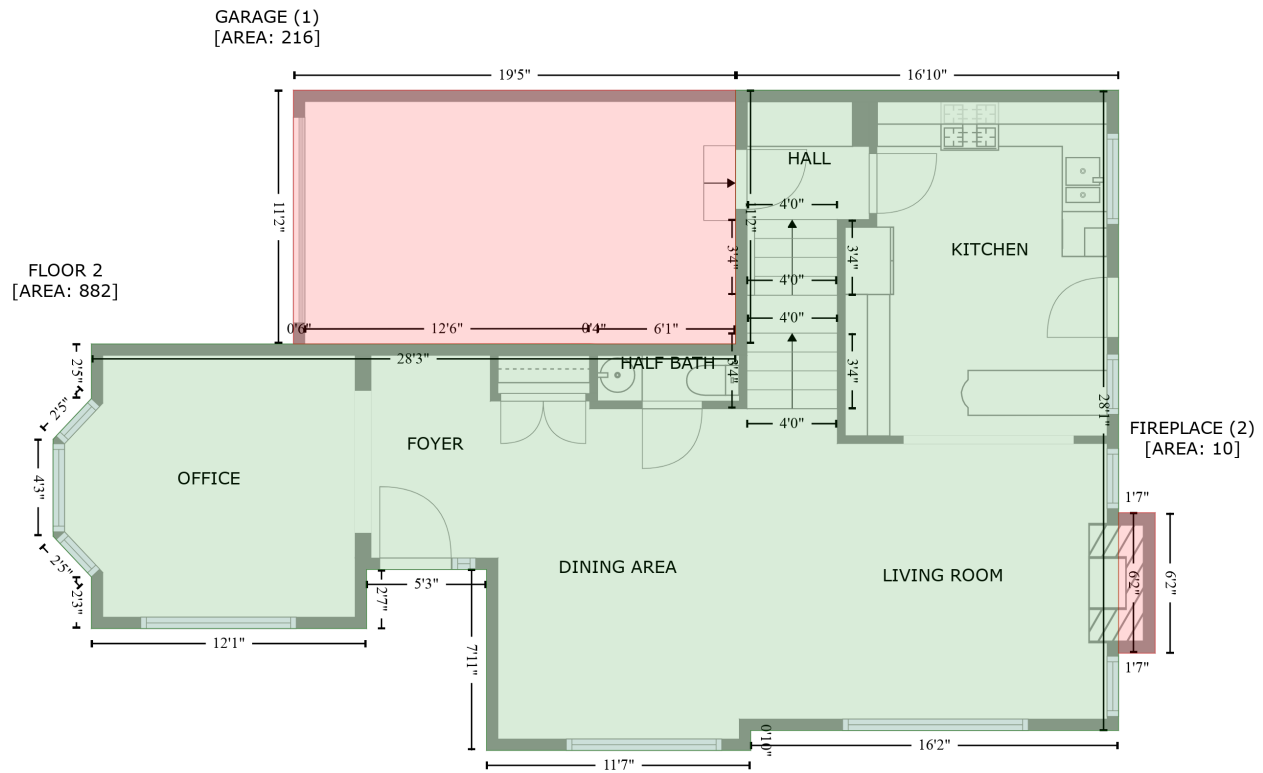


2956 Westoak Trails Boulevard, Westmount, Oakville, Halton County, Ontario, Canada, L6M 4S6

Gross Living Area: 1794 sq. ft

Level 2



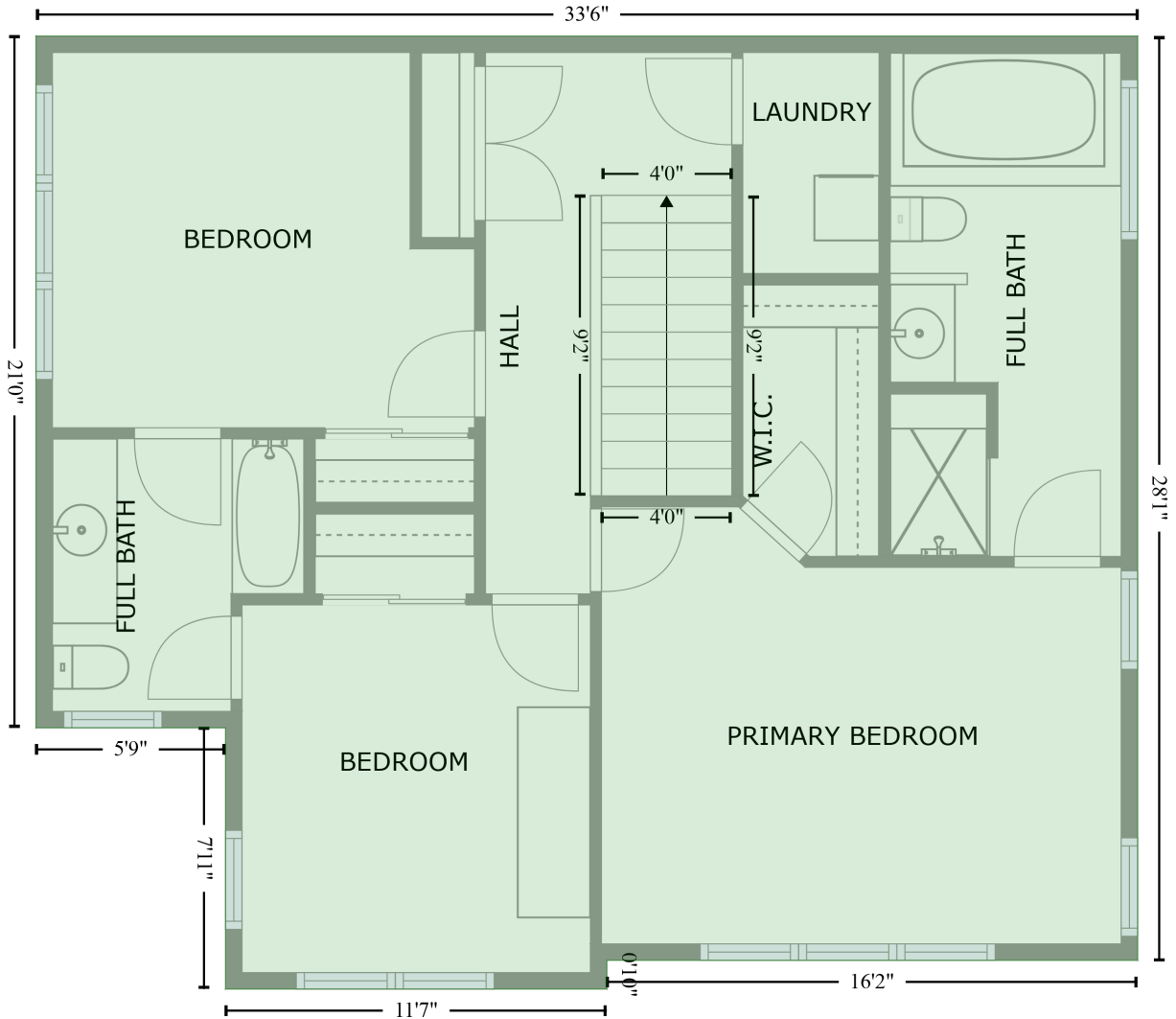
Space	Area (sq. ft)	Calculation <small>Coordinate Polygon Area Algorithm using inches</small>
FLOOR 2 (Living area)	882	$-\left((557.3 + 557.3) * (27.5 - 364.8) + (557.3 + 363.5) * (364.8 - 364.8) + (363.5 + 363.5) * (364.8 - 375.3) + (363.5 + 224.3) * (375.3 - 375.3) + (224.3 + 224.3) * (375.3 - 279.9) + (224.3 + 161.1) * (279.9 - 279.9) + (161.1 + 161.1) * (279.9 - 311.1) + (161.1 + 16) * (311.1 - 311.1) + (16 + 16) * (311.1 - 283.9) + (16 + -4.1) * (283.9 - 262.5) + (-4.1 + -4.1) * (262.5 - 211.4) + (-4.1 + 16) * (211.4 - 189.9) + (16 + 16) * (189.9 - 161.1) + (16 + 355.5) * (161.1 - 161.1) + (355.5 + 355.5) * (161.1 - 27.5) + (355.5 + 557.3) * (27.5 - 27.5)\right) * 0.5 * 0.00694$
GARAGE (Non-living area)	216	$-\left((355.5 + 355.5) * (27.5 - 161.1) + (355.5 + 282.7) * (161.1 - 161.1) + (282.7 + 278.7) * (161.1 - 161) + (278.7 + 128.5) * (161 - 161.1) + (128.5 + 122.5) * (161.1 - 161.1) + (122.5 + 122.5) * (161.1 - 27.5) + (122.5 + 355.5) * (27.5 - 27.5)\right) * 0.5 * 0.00694$
FIREPLACE (Non-living area)	10	$-\left((576.6 + 576.6) * (250 - 324) + (576.6 + 557.3) * (324 - 324) + (557.3 + 557.3) * (324 - 250) + (557.3 + 576.6) * (250 - 250)\right) * 0.5 * 0.00694$

2956 Westoak Trails Boulevard, Westmount, Oakville, Halton County, Ontario, Canada, L6M 4S6

Gross Living Area: 1794 sq. ft

Level 3

FLOOR 3
[AREA: 912]



Space	Area (sq. ft)	Calculation <small>Coordinate Polygon Area Algorithm using inches</small>
FLOOR 3 (Living area)	912	$-((557.3 + 557.3) * (27.5 - 364.8) + (557.3 + 363.5) * (364.8 - 364.8) + (363.5 + 363.5) * (364.8 - 375.3) + (363.5 + 224.3) * (375.3 - 375.3) + (224.3 + 224.3) * (375.3 - 279.9) + (224.3 + 155.1) * (279.9 - 279.9) + (155.1 + 155.1) * (279.9 - 27.5) + (155.1 + 557.3) * (27.5 - 27.5)) * 0.5 * 0.00694$