



Home report


721 Trailview Dr,Peterborough,ON,CA




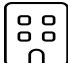
Property summary


 **1** Garages


 **3** Bedrooms

 **2** Bathrooms

 **0** Half baths

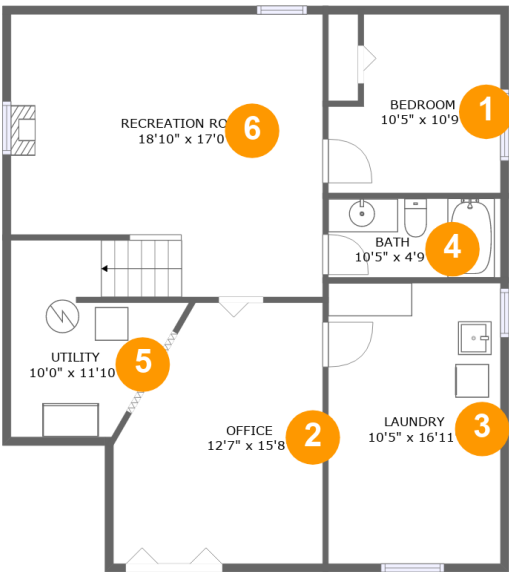
 **2** Floors

 **1,908** Gross living area sqft

 **2,560** Total sqft

Home report

721 Trailview Dr,Peterborough,ON,CA



Room dimensions

Floor 1 Total sqft: 993 Living area: 896

#		Dimensions	sqft	Counted as living area
1	Bedroom	10'5" x 10'9"	100 sq. ft	Yes
2	Office	12'7" x 15'8"	177 sq. ft	Yes
3	Laundry	10'5" x 16'11"	176 sq. ft	Yes
4	Bath	10'5" x 4'9"	49 sq. ft	Yes
5	Utility	10'0" x 11'10"	88 sq. ft	No
6	Recreation Room	18'10" x 17'0"	299 sq. ft	Yes

Home report

721 Trailview Dr,Peterborough,ON,CA

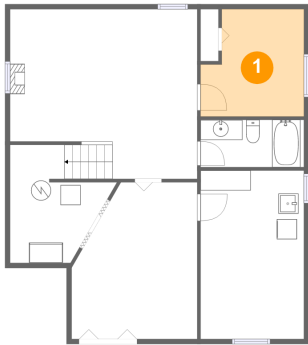


Room dimensions

Floor 2 Total sqft: 1567 Living area: 1012

#		Dimensions	sqft	Counted as living area
7	Foyer	6'2" x 6'1"	79 sq. ft	Yes
8	Kitchen	9'3" x 3'4"	73 sq. ft	Yes
9	Garage	17'0" x 19'9"	335 sq. ft	No
10	Hall	4'11" x 4'5"	22 sq. ft	Yes
11	Living Room	13'9" x 26'7"	288 sq. ft	Yes
12	Deck	22'2" x 9'5"	192 sq. ft	No
13	Bath	9'9" x 4'9"	46 sq. ft	Yes
14	Primary Bedroom	14'11" x 11'11"	159 sq. ft	Yes
15	Bedroom	13'5" x 8'2"	110 sq. ft	Yes
16	Dining Area	9'7" x 8'1"	77 sq. ft	Yes

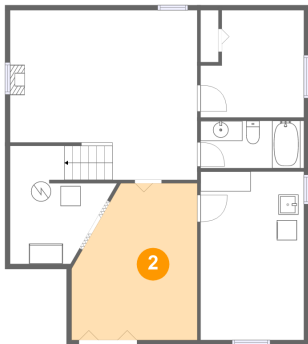
1 Floor 1 - Bedroom



Dimensions: 10'5" x 10'9"
Area: 100 sq. ft
Counted as living area: Yes

Heated: Yes
Finished: Yes
Enclosed: Yes
Contiguous: Yes
Permitted: Yes
Wet space: No
Addition: No
Conversion: No

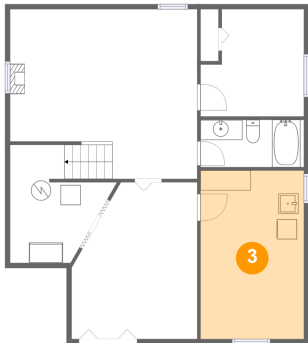
2 Floor 1 - Office



Dimensions: 12'7" x 15'8"
Area: 177 sq. ft
Counted as living area: Yes

Heated: Yes
Finished: Yes
Enclosed: Yes
Contiguous: Yes
Permitted: Yes
Wet space: No
Addition: No
Conversion: No

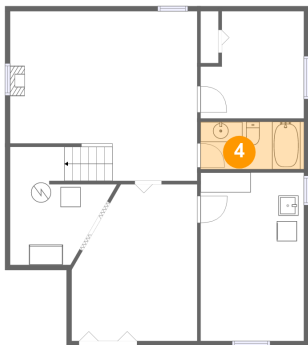
3 Floor 1 - Laundry



Dimensions: 10'5" x 16'11"
Area: 176 sq. ft
Counted as living area: Yes

Heated: Yes
Finished: Yes
Enclosed: Yes
Contiguous: Yes
Permitted: Yes
Wet space: No
Addition: No
Conversion: No

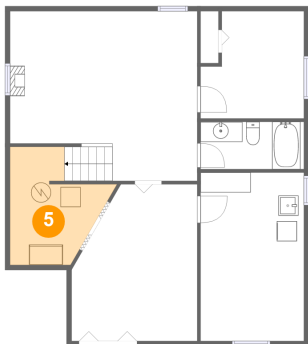
4 Floor 1 - Bath



Dimensions: 10'5" x 4'9"
Area: 49 sq. ft
Counted as living area: Yes

Heated: Yes
Finished: Yes
Enclosed: Yes
Contiguous: Yes
Permitted: Yes
Wet space: Yes
Addition: No
Conversion: No

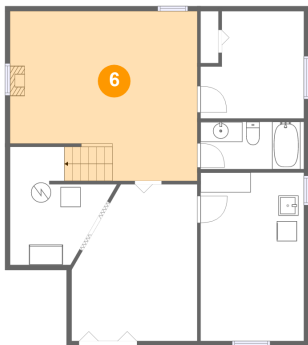
5 Floor 1 - Utility



Dimensions: 10'0" x 11'10"
Area: 88 sq. ft
Counted as living area: No

Heated: Yes
Finished: No
Enclosed: Yes
Contiguous: Yes
Permitted: Yes
Wet space: No
Addition: No
Conversion: No

6 Floor 1 - Recreation Room



Dimensions: 18'10" x 17'0"
Area: 299 sq. ft
Counted as living area: Yes

Heated: Yes
Finished: Yes
Enclosed: Yes
Contiguous: Yes
Permitted: Yes
Wet space: No
Addition: No
Conversion: No

7 Floor 2 - Foyer



Dimensions: 6'2" x 6'1"
Area: 79 sq. ft
Counted as living area: Yes

Heated: Yes
Finished: Yes
Enclosed: Yes
Contiguous: Yes
Permitted: Yes
Wet space: No
Addition: No
Conversion: No

8 Floor 2 - Kitchen



Dimensions: 9'3" x 3'4"
Area: 73 sq. ft
Counted as living area: Yes

Heated: Yes
Finished: Yes
Enclosed: Yes
Contiguous: Yes
Permitted: Yes
Wet space: No
Addition: No
Conversion: No

9 Floor 2 - Garage



Dimensions: 17'0" x 19'9"
Area: 335 sq. ft
Counted as living area: No

Heated: No
Finished: No
Enclosed: Yes
Contiguous: Yes
Permitted: Yes
Wet space: No
Addition: No
Conversion: No

10 Floor 2 - Hall



Dimensions: 4'11" x 4'5"
Area: 22 sq. ft
Counted as living area: Yes

Heated: Yes
Finished: Yes
Enclosed: Yes
Contiguous: Yes
Permitted: Yes
Wet space: No
Addition: No
Conversion: No

11 Floor 2 - Living Room



Dimensions: 13'9" x 26'7"
Area: 288 sq. ft
Counted as living area: Yes

Heated: Yes
Finished: Yes
Enclosed: Yes
Contiguous: Yes
Permitted: Yes
Wet space: No
Addition: No
Conversion: No

12 Floor 2 - Deck



Dimensions: 22'2" x 9'5"
Area: 192 sq. ft
Counted as living area: No

Heated: No
Finished: Yes
Enclosed: No
Contiguous: Yes
Permitted: Yes
Wet space: No
Addition: No
Conversion: No

13 Floor 2 - Bath



Dimensions: 9'9" x 4'9"
Area: 46 sq. ft
Counted as living area: Yes

Heated: Yes
Finished: Yes
Enclosed: Yes
Contiguous: Yes
Permitted: Yes
Wet space: Yes
Addition: No
Conversion: No

14 Floor 2 - Primary Bedroom



Dimensions: 14'11" x 11'11"
Area: 159 sq. ft
Counted as living area: Yes

Heated: Yes
Finished: Yes
Enclosed: Yes
Contiguous: Yes
Permitted: Yes
Wet space: No
Addition: No
Conversion: No

15 Floor 2 - Bedroom



Dimensions: 13'5" x 8'2"
Area: 110 sq. ft
Counted as living area: Yes

Heated: Yes
Finished: Yes
Enclosed: Yes
Contiguous: Yes
Permitted: Yes
Wet space: No
Addition: No
Conversion: No

16 Floor 2 - Dining Area



Dimensions: 9'7" x 8'1"
Area: 77 sq. ft
Counted as living area: Yes

Heated: Yes
Finished: Yes
Enclosed: Yes
Contiguous: Yes
Permitted: Yes
Wet space: No
Addition: No
Conversion: No