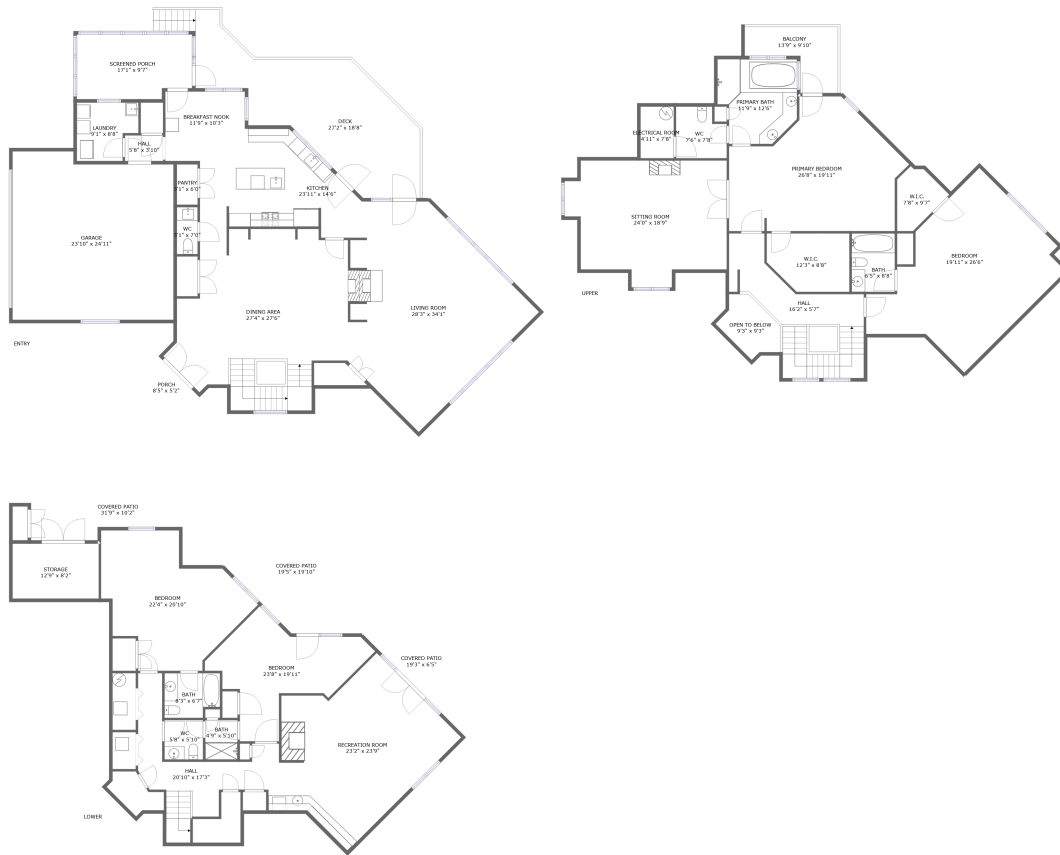


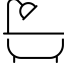

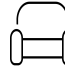



# 2439 Capewood Drive, Huddleston, Bedford County, Virginia, United States, 24104

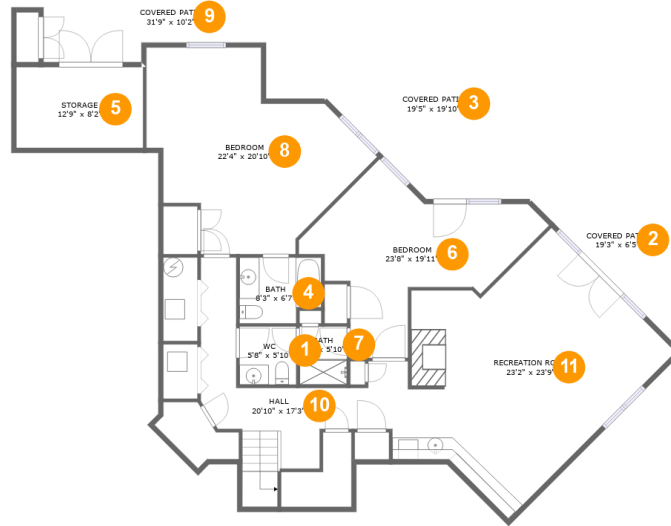


## Property Summary

 **1** garages     **4** bedrooms     **4** bathrooms     **1** half baths

 **3** floors     **5,482** Gross Living Area sqft     **7,816** total sqft

# 2439 Capewood Drive, Huddleston, Bedford County, Virginia, United States, 24104



## Room Dimensions

Floor 1

Total sqft: 2484

Living area: 1579

#	Room name	Dimensions	Area (sqft)	Counted as Living Area
1	Wc	5'8" x 5'10"	33 sq. ft	Yes
2	Covered Patio	19'3" x 6'5"	123 sq. ft	No
3	Covered Patio	19'5" x 19'10"	328 sq. ft	No
4	Bath	8'3" x 6'7"	50 sq. ft	Yes
5	Storage	12'9" x 8'2"	104 sq. ft	No
6	Bedroom	23'8" x 19'11"	234 sq. ft	Yes
7	Bath	4'9" x 5'10"	28 sq. ft	Yes
8	Bedroom	22'4" x 20'10"	319 sq. ft	Yes
9	Covered Patio	31'9" x 10'2"	272 sq. ft	No
10	Hall	20'10" x 17'3"	183 sq. ft	Yes
11	Recreation Room	23'2" x 23'9"	459 sq. ft	Yes

# 2439 Capewood Drive, Huddleston, Bedford County, Virginia, United States, 24104



## Room Dimensions

Floor 2

Total sqft: 3121

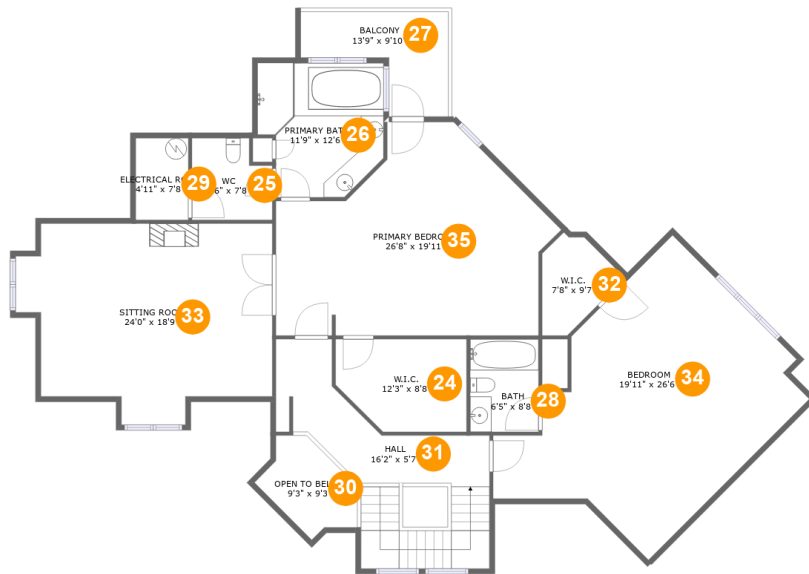
Living area: 1892

#	Room name	Dimensions	Area (sqft)	Counted as Living Area
12	Screened Porch	17'1" x 9'7"	156 sq. ft	No
13	Garage	23'10" x 24'11"	565 sq. ft	No
14	Kitchen	23'11" x 14'6"	269 sq. ft	Yes
15	Dining Area	27'4" x 27'6"	582 sq. ft	Yes
16	Laundry	9'1" x 8'8"	69 sq. ft	Yes
17	Wc	3'1" x 7'0"	21 sq. ft	Yes
18	Porch	8'5" x 5'2"	45 sq. ft	No
19	Deck	27'2" x 18'8"	416 sq. ft	No
20	Pantry	3'1" x 6'0"	18 sq. ft	Yes
21	Living Room	28'3" x 34'1"	605 sq. ft	Yes
22	Hall	5'8" x 3'10"	21 sq. ft	Yes

**2439 Capewood Drive, Huddleston, Bedford  
County, Virginia, United States, 24104**

#	Room name	Dimensions	Area (sqft)	Counted as Living Area
23	Breakfast Nook	11'9" x 10'3"	105 sq. ft	Yes

# 2439 Capewood Drive, Huddleston, Bedford County, Virginia, United States, 24104



## Room Dimensions

Floor 3

Total sqft: 2211

Living area: 2011

#	Room name	Dimensions	Area (sqft)	Counted as Living Area
24	W.i.c.	12'3" x 8'8"	96 sq. ft	Yes
25	Wc	7'6" x 7'8"	52 sq. ft	Yes
26	Primary Bath	11'9" x 12'6"	131 sq. ft	Yes
27	Balcony	13'9" x 9'10"	90 sq. ft	No
28	Bath	6'5" x 8'8"	55 sq. ft	Yes
29	Electrical Room	4'11" x 7'8"	38 sq. ft	No
30	Open To Below	9'3" x 9'3"	57 sq. ft	No
31	Hall	16'2" x 5'7"	220 sq. ft	Yes
32	W.i.c.	7'8" x 9'7"	48 sq. ft	Yes
33	Sitting Room	24'0" x 18'9"	377 sq. ft	Yes
34	Bedroom	19'11" x 26'6"	386 sq. ft	Yes

Scan captured on Fri, 06 Sep 2024 21:53:33 GMT

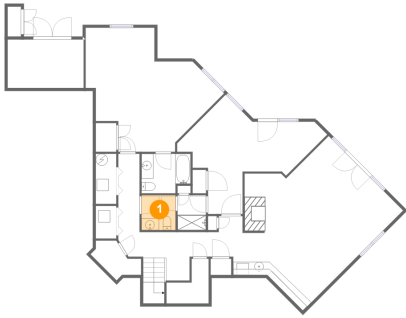
Information is calculated by CubiCasa technology; deemed highly reliable but not guaranteed.

**2439 Capewood Drive, Huddleston, Bedford  
County, Virginia, United States, 24104**

#	Room name	Dimensions	Area (sqft)	Counted as Living Area
35	Primary Bedroom	26'8" x 19'11"	392 sq. ft	Yes

# 2439 Capewood Drive, Huddleston, Bedford County, Virginia, United States, 24104

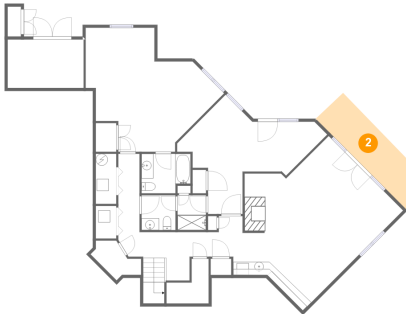
## 1 Floor 1 - Wc



Dimensions: 5'8" x 5'10"  
Area: 33 sq. ft  
Counted as Living Area:  
Yes

Heated: Yes  
Finished: Yes  
Enclosed: Yes  
Contiguous:  
Yes  
Permitted: Yes  
Wet Space: Yes  
Addition: No  
Conversion: No

## 2 Floor 1 - Covered Patio

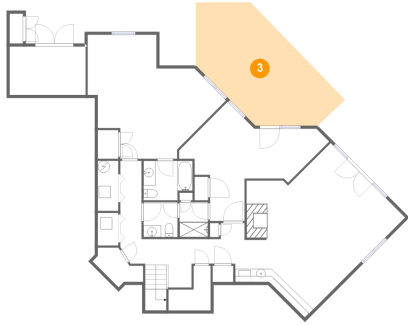


Dimensions: 19'3" x 6'5"  
Area: 123 sq. ft  
Counted as Living Area: No

Heated: No  
Finished: Yes  
Enclosed: No  
Contiguous: Yes  
Permitted: Yes  
Wet Space: No  
Addition: No  
Conversion: No

# 2439 Capewood Drive, Huddleston, Bedford County, Virginia, United States, 24104

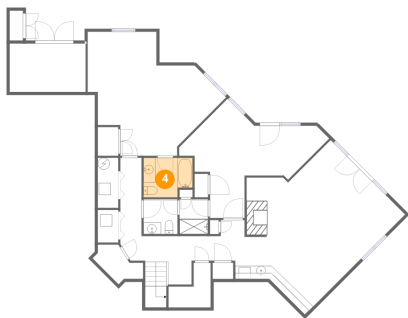
## 3 Floor 1 - Covered Patio



Dimensions: 19'5" x 19'10"  
Area: 328 sq. ft  
Counted as Living Area: No

Heated: No  
Finished: Yes  
Enclosed: No  
Contiguous: Yes  
Permitted: Yes  
Wet Space: No  
Addition: No  
Conversion: No

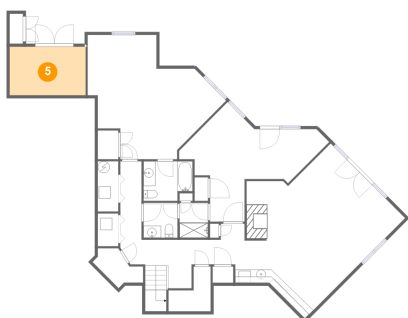
## 4 Floor 1 - Bath



Dimensions: 8'3" x 6'7"  
Area: 50 sq. ft  
Counted as Living Area: Yes

Heated: Yes  
Finished: Yes  
Enclosed: Yes  
Contiguous: Yes  
Permitted: Yes  
Wet Space: Yes  
Addition: No  
Conversion: No

## 5 Floor 1 - Storage



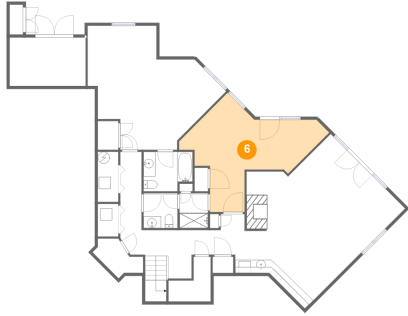
Dimensions: 12'9" x 8'2"  
Area: 104 sq. ft  
Counted as Living Area: No

Heated: No  
Finished: No  
Enclosed: No  
Contiguous: Yes  
Permitted: Yes  
Wet Space: No  
Addition: No  
Conversion: No



# 2439 Capewood Drive, Huddleston, Bedford County, Virginia, United States, 24104

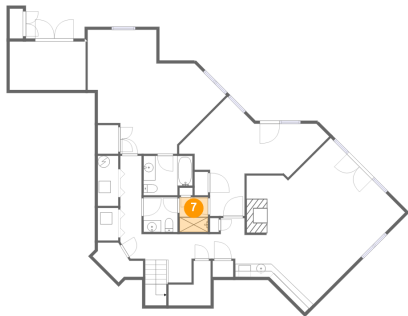
## 6 Floor 1 - Bedroom



Dimensions: 23'8" x 19'11"  
Area: 234 sq. ft  
Counted as Living Area:  
Yes

Heated: Yes  
Finished: Yes  
Enclosed: Yes  
Contiguous:  
Yes  
Permitted: Yes  
Wet Space: No  
Addition: No  
Conversion: No

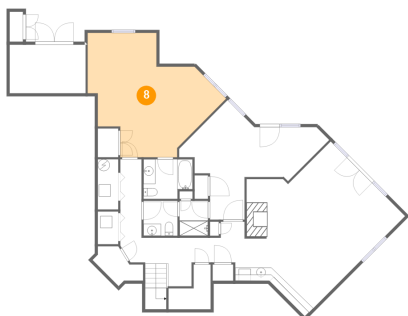
## 7 Floor 1 - Bath



Dimensions: 4'9" x 5'10"  
Area: 28 sq. ft  
Counted as Living Area:  
Yes

Heated: Yes  
Finished: Yes  
Enclosed: Yes  
Contiguous:  
Yes  
Permitted: Yes  
Wet Space: Yes  
Addition: No  
Conversion: No

## 8 Floor 1 - Bedroom

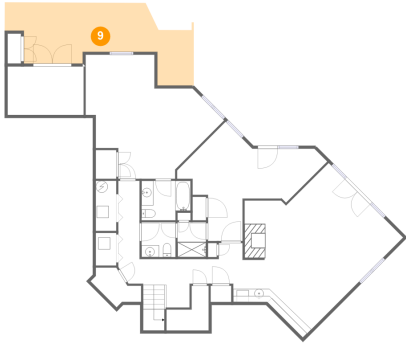


Dimensions: 22'4" x 20'10"  
Area: 319 sq. ft  
Counted as Living Area:  
Yes

Heated: Yes  
Finished: Yes  
Enclosed: Yes  
Contiguous:  
Yes  
Permitted: Yes  
Wet Space: No  
Addition: No  
Conversion: No

# 2439 Capewood Drive, Huddleston, Bedford County, Virginia, United States, 24104

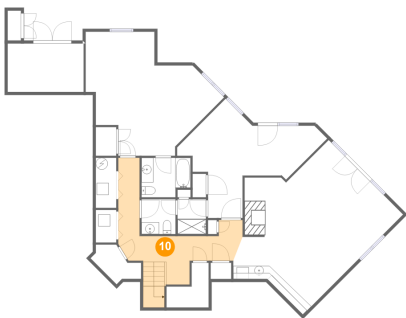
## 9 Floor 1 - Covered Patio



Dimensions: 31'9" x 10'2"  
Area: 272 sq. ft  
Counted as Living Area: No

Heated: No  
Finished: Yes  
Enclosed: No  
Contiguous: Yes  
Permitted: Yes  
Wet Space: No  
Addition: No  
Conversion: No

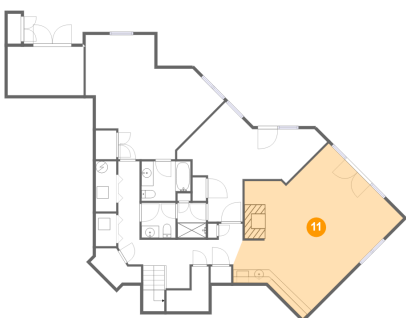
## 10 Floor 1 - Hall



Dimensions: 20'10" x 17'3"  
Area: 183 sq. ft  
Counted as Living Area: Yes

Heated: Yes  
Finished: Yes  
Enclosed: Yes  
Contiguous: Yes  
Permitted: Yes  
Wet Space: No  
Addition: No  
Conversion: No

## 11 Floor 1 - Recreation Room



Dimensions: 23'2" x 23'9"  
Area: 459 sq. ft  
Counted as Living Area: Yes

Heated: Yes  
Finished: Yes  
Enclosed: Yes  
Contiguous: Yes  
Permitted: Yes  
Wet Space: No  
Addition: No  
Conversion: No

# 2439 Capewood Drive, Huddleston, Bedford County, Virginia, United States, 24104

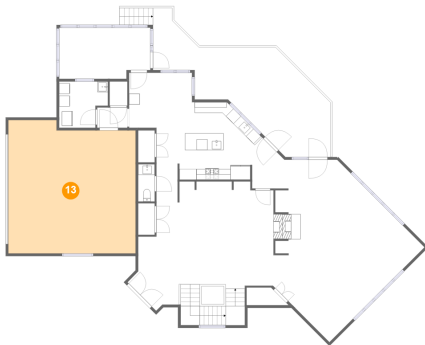
## 12 Floor 2 - Screened Porch



Dimensions: 17'1" x 9'7"  
Area: 156 sq. ft  
Counted as Living Area: No

Heated: No  
Finished: Yes  
Enclosed: No  
Contiguous: Yes  
Permitted: Yes  
Wet Space: No  
Addition: No  
Conversion: No

## 13 Floor 2 - Garage



Dimensions: 23'10" x 24'11"  
Area: 565 sq. ft  
Counted as Living Area: No

Heated: No  
Finished: No  
Enclosed: Yes  
Contiguous: Yes  
Permitted: Yes  
Wet Space: No  
Addition: No  
Conversion: No

## 14 Floor 2 - Kitchen

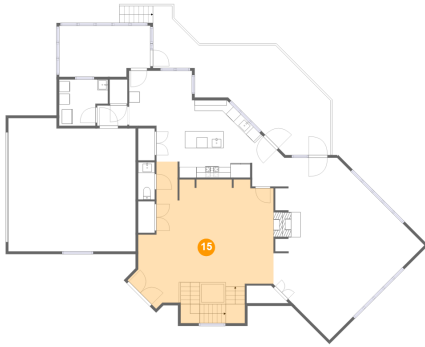


Dimensions: 23'11" x 14'6"  
Area: 269 sq. ft  
Counted as Living Area: Yes

Heated: Yes  
Finished: Yes  
Enclosed: Yes  
Contiguous: Yes  
Permitted: Yes  
Wet Space: No  
Addition: No  
Conversion: No

# 2439 Capewood Drive, Huddleston, Bedford County, Virginia, United States, 24104

## 15 Floor 2 - Dining Area



Dimensions: 27'4" x 27'6"  
Area: 582 sq. ft  
Counted as Living Area:  
Yes

Heated: Yes  
Finished: Yes  
Enclosed: Yes  
Contiguous:  
Yes  
Permitted: Yes  
Wet Space: No  
Addition: No  
Conversion: No

## 16 Floor 2 - Laundry



Dimensions: 9'1" x 8'8"  
Area: 69 sq. ft  
Counted as Living Area:  
Yes

Heated: Yes  
Finished: Yes  
Enclosed: Yes  
Contiguous:  
Yes  
Permitted: Yes  
Wet Space: No  
Addition: No  
Conversion: No

## 17 Floor 2 - Wc



Dimensions: 3'1" x 7'0"  
Area: 21 sq. ft  
Counted as Living Area:  
Yes

Heated: Yes  
Finished: Yes  
Enclosed: Yes  
Contiguous:  
Yes  
Permitted: Yes  
Wet Space: Yes  
Addition: No  
Conversion: No

# 2439 Capewood Drive, Huddleston, Bedford County, Virginia, United States, 24104

## 18 Floor 2 - Porch



Dimensions: 8'5" x 5'2"  
Area: 45 sq. ft  
Counted as Living Area: No

Heated: No  
Finished: Yes  
Enclosed: No  
Contiguous: Yes  
Permitted: Yes  
Wet Space: No  
Addition: No  
Conversion: No

## 19 Floor 2 - Deck



Dimensions: 27'2" x 18'8"  
Area: 416 sq. ft  
Counted as Living Area: No

Heated: No  
Finished: Yes  
Enclosed: No  
Contiguous: Yes  
Permitted: Yes  
Wet Space: No  
Addition: No  
Conversion: No

## 20 Floor 2 - Pantry

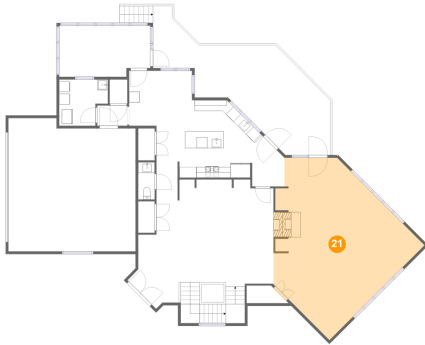


Dimensions: 3'1" x 6'0"  
Area: 18 sq. ft  
Counted as Living Area: Yes

Heated: Yes  
Finished: Yes  
Enclosed: Yes  
Contiguous: Yes  
Permitted: Yes  
Wet Space: No  
Addition: No  
Conversion: No

# 2439 Capewood Drive, Huddleston, Bedford County, Virginia, United States, 24104

## 21 Floor 2 - Living Room



Dimensions: 28'3" x 34'1"  
Area: 605 sq. ft  
Counted as Living Area:  
Yes

Heated: Yes  
Finished: Yes  
Enclosed: Yes  
Contiguous:  
Yes  
Permitted: Yes  
Wet Space: No  
Addition: No  
Conversion: No

## 22 Floor 2 - Hall



Dimensions: 5'8" x 3'10"  
Area: 21 sq. ft  
Counted as Living Area:  
Yes

Heated: Yes  
Finished: Yes  
Enclosed: Yes  
Contiguous:  
Yes  
Permitted: Yes  
Wet Space: No  
Addition: No  
Conversion: No

## 23 Floor 2 - Breakfast Nook

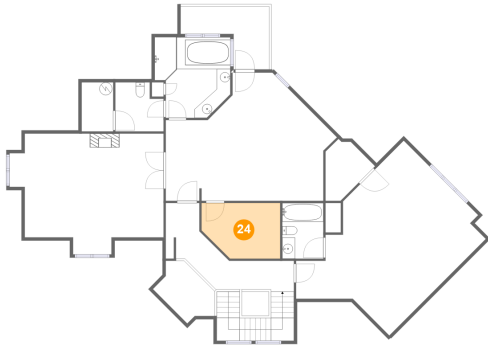


Dimensions: 11'9" x 10'3"  
Area: 105 sq. ft  
Counted as Living Area:  
Yes

Heated: Yes  
Finished: Yes  
Enclosed: Yes  
Contiguous:  
Yes  
Permitted: Yes  
Wet Space: No  
Addition: No  
Conversion: No

# 2439 Capewood Drive, Huddleston, Bedford County, Virginia, United States, 24104

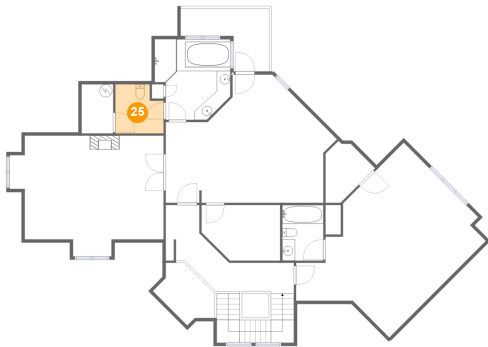
## 24 Floor 3 - W.i.c.



Dimensions: 12'3" x 8'8"  
Area: 96 sq. ft  
Counted as Living Area:  
Yes

Heated: Yes  
Finished: Yes  
Enclosed: Yes  
Contiguous:  
Yes  
Permitted: Yes  
Wet Space: No  
Addition: No  
Conversion: No

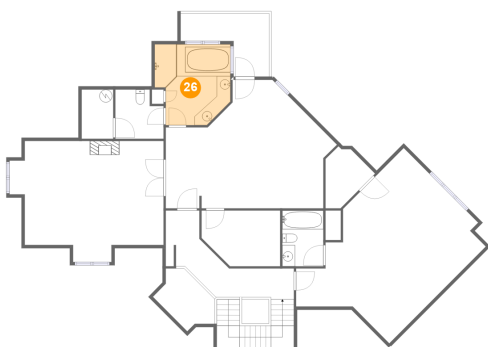
## 25 Floor 3 - Wc



Dimensions: 7'6" x 7'8"  
Area: 52 sq. ft  
Counted as Living Area:  
Yes

Heated: Yes  
Finished: Yes  
Enclosed: Yes  
Contiguous:  
Yes  
Permitted: Yes  
Wet Space: Yes  
Addition: No  
Conversion: No

## 26 Floor 3 - Primary Bath

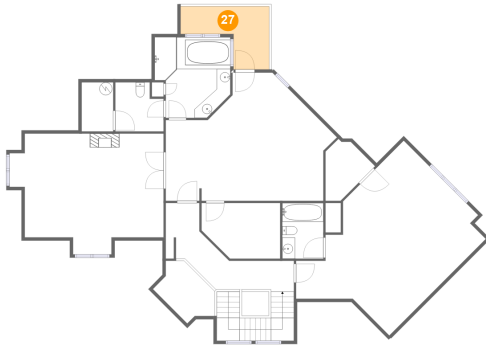


Dimensions: 11'9" x 12'6"  
Area: 131 sq. ft  
Counted as Living Area:  
Yes

Heated: Yes  
Finished: Yes  
Enclosed: Yes  
Contiguous:  
Yes  
Permitted: Yes  
Wet Space: Yes  
Addition: No  
Conversion: No

# 2439 Capewood Drive, Huddleston, Bedford County, Virginia, United States, 24104

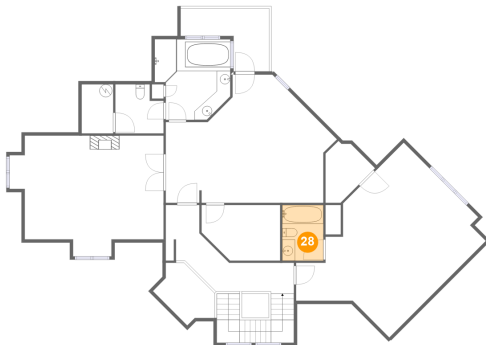
## 27 Floor 3 - Balcony



Dimensions: 13'9" x 9'10"  
Area: 90 sq. ft  
Counted as Living Area: No

Heated: No  
Finished: Yes  
Enclosed: No  
Contiguous: Yes  
Permitted: Yes  
Wet Space: No  
Addition: No  
Conversion: No

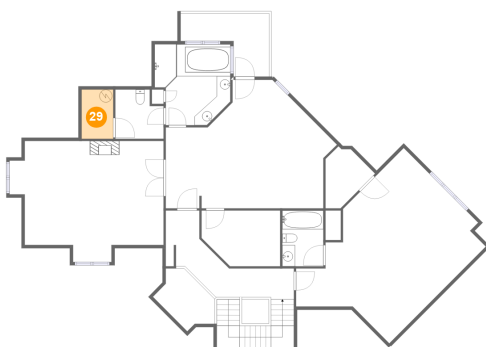
## 28 Floor 3 - Bath



Dimensions: 6'5" x 8'8"  
Area: 55 sq. ft  
Counted as Living Area: Yes

Heated: Yes  
Finished: Yes  
Enclosed: Yes  
Contiguous: Yes  
Permitted: Yes  
Wet Space: Yes  
Addition: No  
Conversion: No

## 29 Floor 3 - Electrical Room



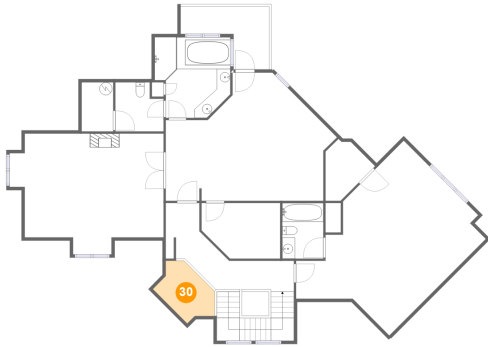
Dimensions: 4'11" x 7'8"  
Area: 38 sq. ft  
Counted as Living Area: No

Heated: No  
Finished: No  
Enclosed: Yes  
Contiguous: Yes  
Permitted: Yes  
Wet Space: No  
Addition: No  
Conversion: No



# 2439 Capewood Drive, Huddleston, Bedford County, Virginia, United States, 24104

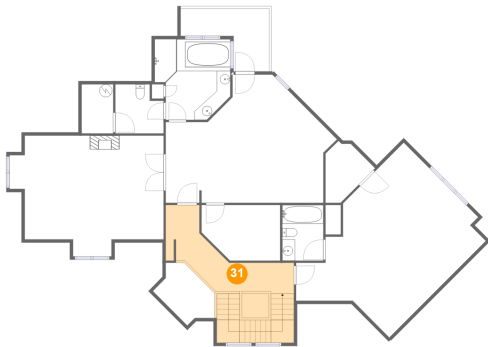
## 30 Floor 3 - Open To Below



Dimensions: 9'3" x 9'3"  
Area: 57 sq. ft  
Counted as Living Area: No

Heated: No  
Finished: No  
Enclosed: No  
Contiguous: Yes  
Permitted: No  
Wet Space: No  
Addition: No  
Conversion: No

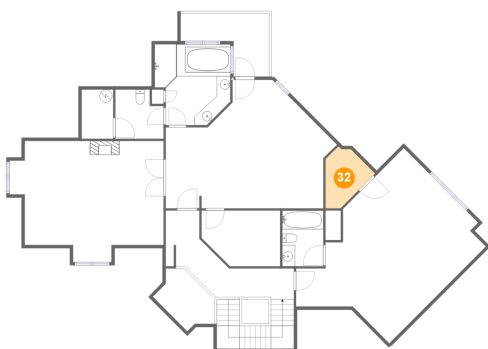
## 31 Floor 3 - Hall



Dimensions: 16'2" x 5'7"  
Area: 220 sq. ft  
Counted as Living Area: Yes

Heated: Yes  
Finished: Yes  
Enclosed: Yes  
Contiguous: Yes  
Permitted: Yes  
Wet Space: No  
Addition: No  
Conversion: No

## 32 Floor 3 - W.i.c.

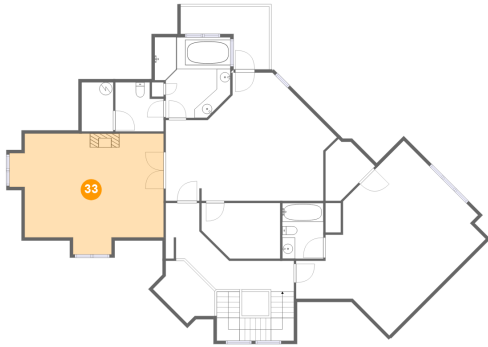


Dimensions: 7'8" x 9'7"  
Area: 48 sq. ft  
Counted as Living Area: Yes

Heated: Yes  
Finished: Yes  
Enclosed: Yes  
Contiguous: Yes  
Permitted: Yes  
Wet Space: No  
Addition: No  
Conversion: No

# 2439 Capewood Drive, Huddleston, Bedford County, Virginia, United States, 24104

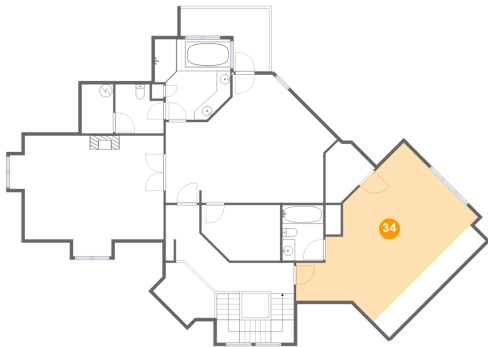
## 33 Floor 3 - Sitting Room



Dimensions: 24'0" x 18'9"  
Area: 377 sq. ft  
Counted as Living Area:  
Yes

Heated: Yes  
Finished: Yes  
Enclosed: Yes  
Contiguous:  
Yes  
Permitted: Yes  
Wet Space: No  
Addition: No  
Conversion: No

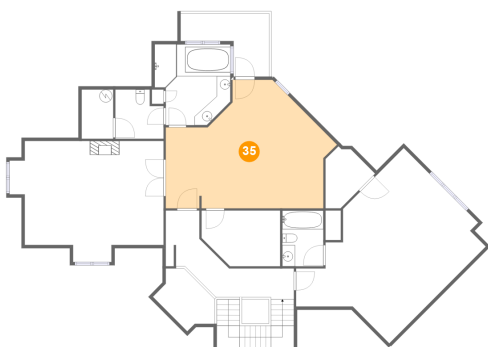
## 34 Floor 3 - Bedroom



Dimensions: 19'11" x 26'6"  
Area: 386 sq. ft  
Counted as Living Area:  
Yes

Heated: Yes  
Finished: Yes  
Enclosed: Yes  
Contiguous:  
Yes  
Permitted: Yes  
Wet Space: No  
Addition: No  
Conversion: No

## 35 Floor 3 - Primary Bedroom



Dimensions: 26'8" x 19'11"  
Area: 392 sq. ft  
Counted as Living Area:  
Yes

Heated: Yes  
Finished: Yes  
Enclosed: Yes  
Contiguous:  
Yes  
Permitted: Yes  
Wet Space: No  
Addition: No  
Conversion: No