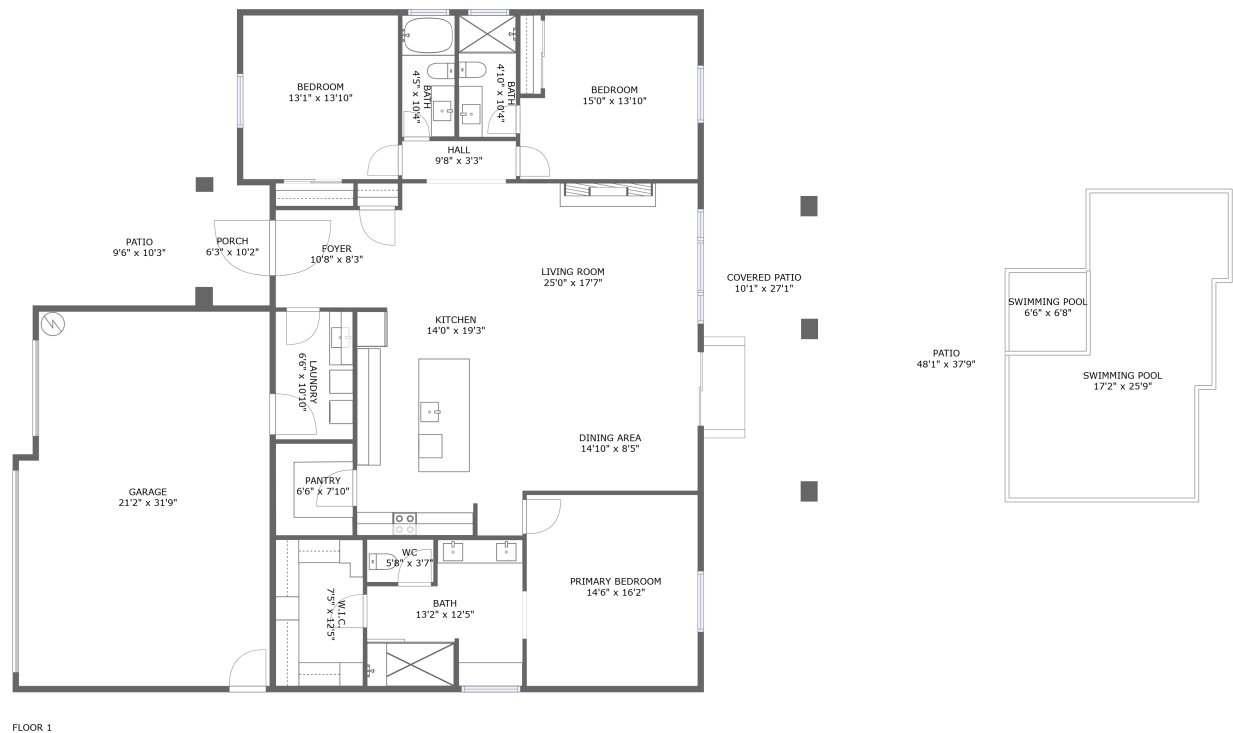


Home report

5291 Chasemoor Street, Pahrump, Nye County, Nevada, United States, 89061



Total Area: 2065 sq. ft

Floor 1: 2065 sq. ft
Excluded: Garage 653 sq. ft, Patio 1252 sq. ft, Covered patio 273 sq. ft, Porch 64 sq. ft, Walls: 132 sq. ft

Property summary

 **1** Floors

 **3** Bedrooms

 **3** Bathrooms

 **1** Garages

Home report

5291 Chasemoor Street, Pahrump, Nye County, Nevada, United States, 89061



Room dimensions

Floor 1

Total:2065sqft

Excluded: 2242sqft

#		Max Dimensions	sqft	Included
1	Bedroom	13'1" x 13'10"	182 sq. ft	Yes
2	Covered Patio	10'1" x 27'1"	273 sq. ft	No
3	Swimming Pool	17'2" x 25'9"	345 sq. ft	No
4	Patio	9'6" x 10'3"	97 sq. ft	No
5	W.I.C.	7'5" x 12'5"	92 sq. ft	Yes
6	Bath	13'2" x 12'5"	138 sq. ft	Yes
7	Laundry	6'6" x 10'10"	71 sq. ft	Yes
8	Bath	4'10" x 10'4"	50 sq. ft	Yes
9	Garage	21'2" x 31'9"	653 sq. ft	No
10	Kitchen	14'0" x 19'3"	269 sq. ft	Yes
11	Bath	4'5" x 10'4"	46 sq. ft	Yes

Home report

5291 Chasemoor Street, Pahrump, Nye County, Nevada, United States, 89061

#		Max Dimensions	sqft	Included
12	Swimming Pool	6'6" x 6'8"	44 sq. ft	No
13	Foyer	10'8" x 8'3"	88 sq. ft	Yes
14	Living Room	25'0" x 17'7"	368 sq. ft	Yes
15	WC	5'8" x 3'7"	20 sq. ft	Yes
16	Dining Area	14'10" x 8'5"	125 sq. ft	Yes
17	Hall	9'8" x 3'3"	31 sq. ft	Yes
18	Porch	6'3" x 10'2"	64 sq. ft	No
19	Patio	48'1" x 37'9"	1543 sq. ft	No
20	Primary Bedroom	14'6" x 16'2"	234 sq. ft	Yes
21	Bedroom	15'0" x 13'10"	194 sq. ft	Yes
22	Pantry	6'6" x 7'10"	51 sq. ft	Yes

5291 Chasemoor Street, Pahrump, Nye County, Nevada, United States, 89061

1 Floor 1 - Bedroom



Max Dimensions: 13'1" x 13'10"
Calculated Area: 182 sq. ft
Included: Yes

Heated: Yes
Finished: Yes
Enclosed: Yes
Contiguous: Yes
Permitted: Yes
Wet space: No
Addition: No
Conversion: No

2 Floor 1 - Covered Patio



Max Dimensions: 10'1" x 27'1"
Calculated Area: 273 sq. ft
Included: No

Heated: No
Finished: Yes
Enclosed: No
Contiguous: Yes
Permitted: Yes
Wet space: No
Addition: No
Conversion: No

3 Floor 1 - Swimming Pool



Max Dimensions: 17'2" x 25'9"
Calculated Area: 345 sq. ft
Included: No

Heated: No
Finished: No
Enclosed: No
Contiguous: Yes
Permitted: No
Wet space: No
Addition: No
Conversion: No

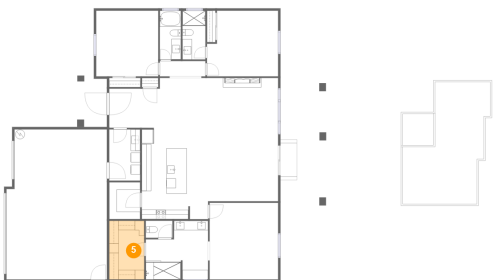
4 Floor 1 - Patio



Max Dimensions: 9'6" x 10'3"
Calculated Area: 97 sq. ft
Included: No

Heated: No
Finished: Yes
Enclosed: No
Contiguous: Yes
Permitted: Yes
Wet space: No
Addition: No
Conversion: No

5 Floor 1 - W.I.C.



Max Dimensions: 7'5" x 12'5"
Calculated Area: 92 sq. ft
Included: Yes

Heated: Yes
Finished: Yes
Enclosed: Yes
Contiguous: Yes
Permitted: Yes
Wet space: No
Addition: No
Conversion: No

5291 Chasemoor Street, Pahrump, Nye County, Nevada, United States, 89061

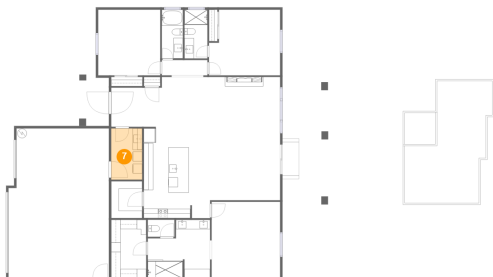
6 Floor 1 - Bath



Max Dimensions: 13'2" x 12'5"
Calculated Area: 138 sq. ft
Included: Yes

Heated: Yes
Finished: Yes
Enclosed: Yes
Contiguous: Yes
Permitted: Yes
Wet space: Yes
Addition: No
Conversion: No

7 Floor 1 - Laundry



Max Dimensions: 6'6" x 10'10"
Calculated Area: 71 sq. ft
Included: Yes

Heated: Yes
Finished: Yes
Enclosed: Yes
Contiguous: Yes
Permitted: Yes
Wet space: No
Addition: No
Conversion: No

8 Floor 1 - Bath



Max Dimensions: 4'10" x 10'4"
Calculated Area: 50 sq. ft
Included: Yes

Heated: Yes
Finished: Yes
Enclosed: Yes
Contiguous: Yes
Permitted: Yes
Wet space: Yes
Addition: No
Conversion: No

Home report

5291 Chasemoor Street, Pahrump, Nye County, Nevada, United States, 89061

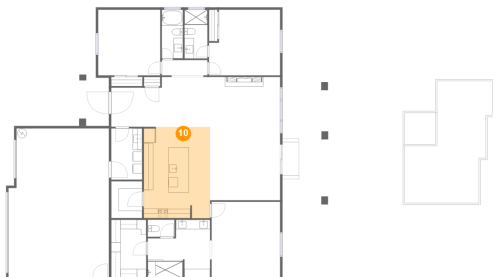
9 Floor 1 - Garage



Max Dimensions: 21'2" x 31'9"
Calculated Area: 653 sq. ft
Included: No

Heated: No
Finished: No
Enclosed: Yes
Contiguous: Yes
Permitted: Yes
Wet space: No
Addition: No
Conversion: No

10 Floor 1 - Kitchen



Max Dimensions: 14'0" x 19'3"
Calculated Area: 269 sq. ft
Included: Yes

Heated: Yes
Finished: Yes
Enclosed: Yes
Contiguous: Yes
Permitted: Yes
Wet space: No
Addition: No
Conversion: No

11 Floor 1 - Bath



Max Dimensions: 4'5" x 10'4"
Calculated Area: 46 sq. ft
Included: Yes

Heated: Yes
Finished: Yes
Enclosed: Yes
Contiguous: Yes
Permitted: Yes
Wet space: Yes
Addition: No
Conversion: No

12 Floor 1 - Swimming Pool



Max Dimensions: 6'6" x 6'8"
Calculated Area: 44 sq. ft
Included: No

Heated: No
Finished: No
Enclosed: No
Contiguous: Yes
Permitted: No
Wet space: No
Addition: No
Conversion: No

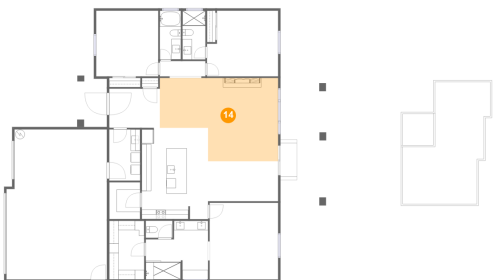
13 Floor 1 - Foyer



Max Dimensions: 10'8" x 8'3"
Calculated Area: 88 sq. ft
Included: Yes

Heated: Yes
Finished: Yes
Enclosed: Yes
Contiguous: Yes
Permitted: Yes
Wet space: No
Addition: No
Conversion: No

14 Floor 1 - Living Room



Max Dimensions: 25'0" x 17'7"
Calculated Area: 368 sq. ft
Included: Yes

Heated: Yes
Finished: Yes
Enclosed: Yes
Contiguous: Yes
Permitted: Yes
Wet space: No
Addition: No
Conversion: No

5291 Chasemoor Street, Pahrump, Nye County, Nevada, United States, 89061

15 Floor 1 - WC



Max Dimensions: 5'8" x 3'7"
Calculated Area: 20 sq. ft
Included: Yes

Heated: Yes
Finished: Yes
Enclosed: Yes
Contiguous: Yes
Permitted: Yes
Wet space: No
Addition: No
Conversion: No

16 Floor 1 - Dining Area



Max Dimensions: 14'10" x 8'5"
Calculated Area: 125 sq. ft
Included: Yes

Heated: Yes
Finished: Yes
Enclosed: Yes
Contiguous: Yes
Permitted: Yes
Wet space: No
Addition: No
Conversion: No

17 Floor 1 - Hall



Max Dimensions: 9'8" x 3'3"
Calculated Area: 31 sq. ft
Included: Yes

Heated: Yes
Finished: Yes
Enclosed: Yes
Contiguous: Yes
Permitted: Yes
Wet space: No
Addition: No
Conversion: No

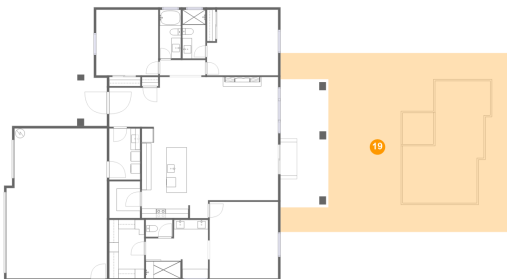
18 Floor 1 - Porch



Max Dimensions: 6'3" x 10'2"
Calculated Area: 64 sq. ft
Included: No

Heated: No
Finished: Yes
Enclosed: No
Contiguous: Yes
Permitted: Yes
Wet space: No
Addition: No
Conversion: No

19 Floor 1 - Patio



Max Dimensions: 48'1" x 37'9"
Calculated Area: 1543 sq. ft
Included: No

Heated: No
Finished: Yes
Enclosed: No
Contiguous: Yes
Permitted: Yes
Wet space: No
Addition: No
Conversion: No

20 Floor 1 - Primary Bedroom

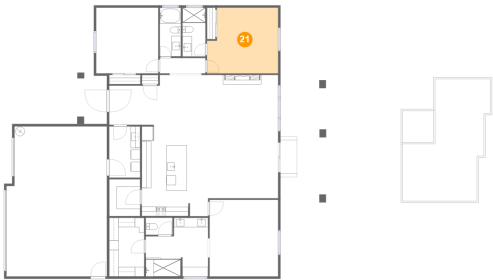


Max Dimensions: 14'6" x 16'2"
Calculated Area: 234 sq. ft
Included: Yes

Heated: Yes
Finished: Yes
Enclosed: Yes
Contiguous: Yes
Permitted: Yes
Wet space: No
Addition: No
Conversion: No

5291 Chasemoor Street, Pahrump, Nye County, Nevada, United States, 89061

21 Floor 1 - Bedroom



Max Dimensions: 15'0" x 13'10"
Calculated Area: 194 sq. ft
Included: Yes

Heated: Yes
Finished: Yes
Enclosed: Yes
Contiguous: Yes
Permitted: Yes
Wet space: No
Addition: No
Conversion: No

22 Floor 1 - Pantry



Max Dimensions: 6'6" x 7'10"
Calculated Area: 51 sq. ft
Included: Yes

Heated: Yes
Finished: Yes
Enclosed: Yes
Contiguous: Yes
Permitted: Yes
Wet space: No
Addition: No
Conversion: No