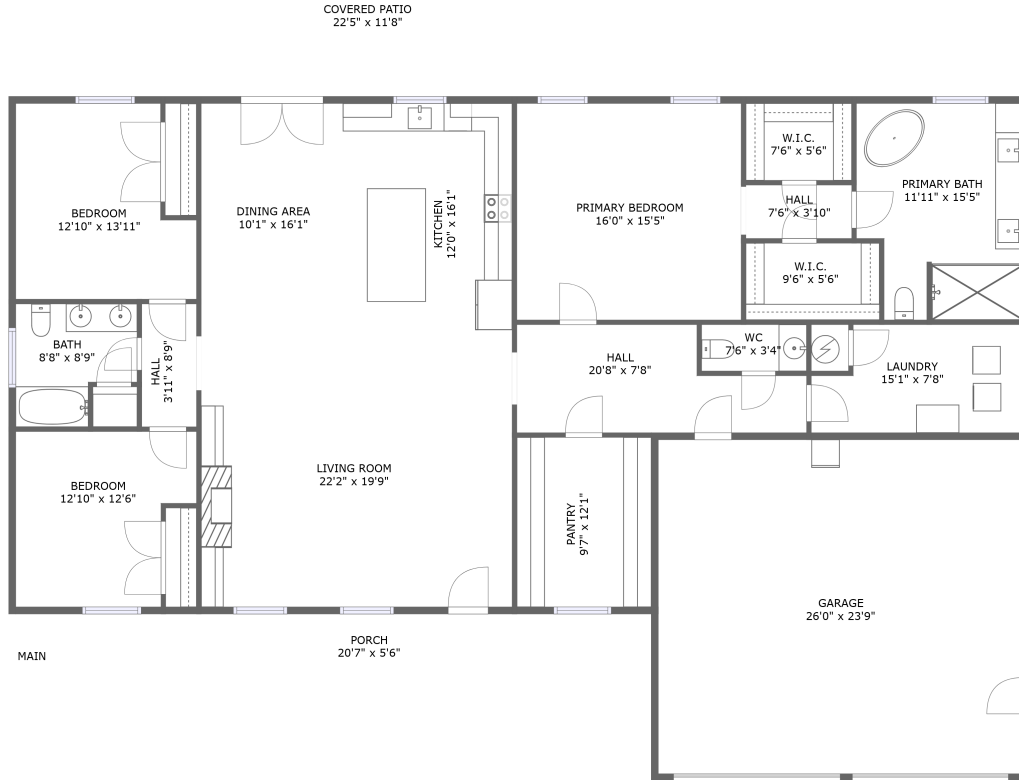



840 Jefferson Dock Road, Penhook, Franklin County, Virginia, United States, 24137



Property summary


 **1** Garages

 **3** Bedrooms

 **2** Bathrooms

 **1** Half baths

 **1** Floors

 **2,352** Gross living area sqft

 **3,376** Total sqft

840 Jefferson Dock Road, Penhook, Franklin County, Virginia, United States, 24137



Room dimensions

Floor 1

Total sqft: 3376 Living area: 2352

#		Dimensions	sqft	Counted as living area
1	Outdoor	20'7" x 5'6"	113 sq. ft	No
2	Cl	9'6" x 5'6"	52 sq. ft	Yes
3	Living Room	22'2" x 19'9"	437 sq. ft	Yes
4	Utility	15'1" x 7'8"	105 sq. ft	Yes
5	Hall	7'6" x 3'10"	29 sq. ft	Yes
6	Bath	8'8" x 8'9"	65 sq. ft	Yes
7	Outdoor	22'5" x 11'8"	262 sq. ft	No
8	Bath	7'6" x 3'4"	25 sq. ft	Yes
9	Bedroom	12'10" x 12'6"	142 sq. ft	Yes
10	Kitchen	12'0" x 16'1"	194 sq. ft	Yes
11	Bedroom	16'0" x 15'5"	246 sq. ft	Yes

Scan captured on Wed, 20 Nov 2024 20:20:59 GMT

Information is calculated by Cubicasa technology deemed highly reliable but not guaranteed.

**840 Jefferson Dock Road, Penhook, Franklin County,
Virginia, United States, 24137**

#		Dimensions	sqft	Counted as living area
12	Dining Room	10'1" x 16'1"	163 sq. ft	Yes
13	Hall	20'8" x 7'8"	130 sq. ft	Yes
14	Cl	7'6" x 5'6"	41 sq. ft	Yes
15	Hall	3'11" x 8'9"	34 sq. ft	Yes
16	Pantry	9'7" x 12'1"	116 sq. ft	Yes
17	Bath	11'11" x 15'5"	170 sq. ft	Yes
18	Bedroom	12'10" x 13'11"	158 sq. ft	Yes
19	Garage	26'0" x 23'9"	618 sq. ft	No

840 Jefferson Dock Road, Penhook, Franklin County, Virginia, United States, 24137

1 Floor 1 - Outdoor



Dimensions: 20'7" x 5'6"
Area: 113 sq. ft
Counted as living area: No

Heated: No
Finished: Yes
Enclosed: No
Contiguous: Yes
Permitted: Yes
Wet space: No
Addition: No
Conversion: No

2 Floor 1 - Cl

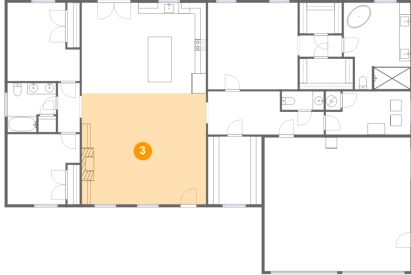


Dimensions: 9'6" x 5'6"
Area: 52 sq. ft
Counted as living area: Yes

Heated: Yes
Finished: Yes
Enclosed: Yes
Contiguous: Yes
Permitted: Yes
Wet space: No
Addition: No
Conversion: No

840 Jefferson Dock Road, Penhook, Franklin County, Virginia, United States, 24137

3 Floor 1 - Living Room



Dimensions: 22'2" x 19'9"
Area: 437 sq. ft
Counted as living area: Yes

Heated: Yes
Finished: Yes
Enclosed: Yes
Contiguous: Yes
Permitted: Yes
Wet space: No
Addition: No
Conversion: No

4 Floor 1 - Utility



Dimensions: 15'1" x 7'8"
Area: 105 sq. ft
Counted as living area: Yes

Heated: Yes
Finished: Yes
Enclosed: Yes
Contiguous: Yes
Permitted: Yes
Wet space: No
Addition: No
Conversion: No

5 Floor 1 - Hall



Dimensions: 7'6" x 3'10"
Area: 29 sq. ft
Counted as living area: Yes

Heated: Yes
Finished: Yes
Enclosed: Yes
Contiguous: Yes
Permitted: Yes
Wet space: No
Addition: No
Conversion: No

840 Jefferson Dock Road, Penhook, Franklin County, Virginia, United States, 24137

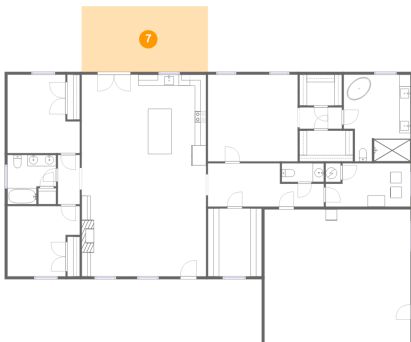
6 Floor 1 - Bath



Dimensions: 8'8" x 8'9"
Area: 65 sq. ft
Counted as living area: Yes

Heated: Yes
Finished: Yes
Enclosed: Yes
Contiguous: Yes
Permitted: Yes
Wet space: Yes
Addition: No
Conversion: No

7 Floor 1 - Outdoor



Dimensions: 22'5" x 11'8"
Area: 262 sq. ft
Counted as living area: No

Heated: No
Finished: Yes
Enclosed: No
Contiguous: Yes
Permitted: Yes
Wet space: No
Addition: No
Conversion: No

8 Floor 1 - Bath



Dimensions: 7'6" x 3'4"
Area: 25 sq. ft
Counted as living area: Yes

Heated: Yes
Finished: Yes
Enclosed: Yes
Contiguous: Yes
Permitted: Yes
Wet space: Yes
Addition: No
Conversion: No

840 Jefferson Dock Road, Penhook, Franklin County, Virginia, United States, 24137

9 Floor 1 - Bedroom



Dimensions: 12'10" x 12'6"
Area: 142 sq. ft
Counted as living area: Yes

Heated: Yes
Finished: Yes
Enclosed: Yes
Contiguous: Yes
Permitted: Yes
Wet space: No
Addition: No
Conversion: No

10 Floor 1 - Kitchen



Dimensions: 12'0" x 16'1"
Area: 194 sq. ft
Counted as living area: Yes

Heated: Yes
Finished: Yes
Enclosed: Yes
Contiguous: Yes
Permitted: Yes
Wet space: No
Addition: No
Conversion: No

11 Floor 1 - Bedroom



Dimensions: 16'0" x 15'5"
Area: 246 sq. ft
Counted as living area: Yes

Heated: Yes
Finished: Yes
Enclosed: Yes
Contiguous: Yes
Permitted: Yes
Wet space: No
Addition: No
Conversion: No

840 Jefferson Dock Road, Penhook, Franklin County, Virginia, United States, 24137

12 Floor 1 - Dining Room



Dimensions: 10'1" x 16'1"
Area: 163 sq. ft
Counted as living area: Yes

Heated: Yes
Finished: Yes
Enclosed: Yes
Contiguous: Yes
Permitted: Yes
Wet space: No
Addition: No
Conversion: No

13 Floor 1 - Hall



Dimensions: 20'8" x 7'8"
Area: 130 sq. ft
Counted as living area: Yes

Heated: Yes
Finished: Yes
Enclosed: Yes
Contiguous: Yes
Permitted: Yes
Wet space: No
Addition: No
Conversion: No

14 Floor 1 - Cl



Dimensions: 7'6" x 5'6"
Area: 41 sq. ft
Counted as living area: Yes

Heated: Yes
Finished: Yes
Enclosed: Yes
Contiguous: Yes
Permitted: Yes
Wet space: No
Addition: No
Conversion: No

840 Jefferson Dock Road, Penhook, Franklin County, Virginia, United States, 24137

15 Floor 1 - Hall



Dimensions: 3'11" x 8'9"
Area: 34 sq. ft
Counted as living area: Yes

Heated: Yes
Finished: Yes
Enclosed: Yes
Contiguous: Yes
Permitted: Yes
Wet space: No
Addition: No
Conversion: No

16 Floor 1 - Pantry



Dimensions: 9'7" x 12'1"
Area: 116 sq. ft
Counted as living area: Yes

Heated: Yes
Finished: Yes
Enclosed: Yes
Contiguous: Yes
Permitted: Yes
Wet space: No
Addition: No
Conversion: No

17 Floor 1 - Bath



Dimensions: 11'11" x 15'5"
Area: 170 sq. ft
Counted as living area: Yes

Heated: Yes
Finished: Yes
Enclosed: Yes
Contiguous: Yes
Permitted: Yes
Wet space: Yes
Addition: No
Conversion: No

840 Jefferson Dock Road, Penhook, Franklin County, Virginia, United States, 24137

18 Floor 1 - Bedroom



Dimensions: 12'10" x 13'11"
Area: 158 sq. ft
Counted as living area: Yes

Heated: Yes
Finished: Yes
Enclosed: Yes
Contiguous: Yes
Permitted: Yes
Wet space: No
Addition: No
Conversion: No

19 Floor 1 - Garage



Dimensions: 26'0" x 23'9"
Area: 618 sq. ft
Counted as living area: No

Heated: No
Finished: No
Enclosed: Yes
Contiguous: Yes
Permitted: Yes
Wet space: No
Addition: No
Conversion: No